

**PORTFOLIO ADDITIONAL
ESTIMATES STATEMENTS
2007-08**

**EDUCATION, EMPLOYMENT AND
WORKPLACE RELATIONS PORTFOLIO**

© Commonwealth of Australia 2008

ISBN 978-0-642-32796-3

This work is copyright. Apart from any use as permitted under the *Copyright Act 1968*, no part may be reproduced by any process without prior written permission from the Commonwealth. Requests and inquiries concerning reproduction and rights should be addressed to the:

Commonwealth Copyright Administration
Attorney-General's Department
Robert Garran Offices
National Circuit
BARTON ACT 2600

Or posted at
Website: www.ag.gov.au/cca

Printed by JS McMillan Printing Group



**THE HON JULIA GILLARD MP
DEPUTY PRIME MINISTER**

**PARLIAMENT HOUSE
CANBERRA 2600**

President of the Senate
Australian Senate
Parliament House
CANBERRA ACT 2600

Speaker
House of Representatives
Parliament House
CANBERRA ACT 2600

Dear Mr President
Dear Mr Speaker

I hereby submit Portfolio Additional Estimates Statements in support of the 2007-08 Additional Estimates for the Education, Employment and Workplace Relations Portfolio.

These statements have been developed, and are submitted to the Parliament, as a statement on the funding requirements being sought for the Portfolio.

I present these statements by virtue of my ministerial responsibility for accountability to the Parliament and, through it, the public.

Yours sincerely

A handwritten signature in cursive script that reads 'Julia Gillard'.

Julia Gillard
Minister for Employment and Workplace Relations
Minister for Education
Minister for Social Inclusion

TABLE OF CONTENTS

User Guide	viii
Introduction	viii
Structure of the Portfolio Additional Estimates Statements	ix
Styles and conventions used	x
Portfolio Overview	2
Additional estimates and variations — Portfolio level	5
Agency Additional Estimates Statements	7
Department of Education, Employment and Workplace Relations	9
Australian Fair Pay Commission Secretariat	63
Australian Industrial Relations Commission and Australian Industrial Registry	85
Carrick Institute for Learning and Teaching in Higher Education Ltd	111
Office of the Australian Building and Construction Commissioner	127
Workplace Authority	149
Workplace Ombudsman.....	175
Glossary	203
Acronyms	209

**USER GUIDE
TO THE
PORTFOLIO ADDITIONAL
ESTIMATES STATEMENT**

USER GUIDE

INTRODUCTION

The purpose of the Portfolio Additional Estimates Statements (PAES), like that of the Portfolio Budget Statements, is to inform Senators and Members of Parliament and the public of the proposed allocation of resources to Government outcomes by agencies within the portfolio. However, unlike the Portfolio Budget Statements, the PAES summarise only the *changes* in resourcing by outcome since the Budget, that is, they do not include a complete resourcing table for the agency. The PAES include new Measures, summarise the changes by Appropriation Bill, and, where relevant, by Special Appropriation and Special Account. The 2007-08 PAES also cover any significant changes to the portfolio which may have arisen from the change in government and the subsequent Administrative Arrangements Orders of 3 December 2007 and 25 January 2008.

The PAES facilitate understanding of the proposed appropriations in Appropriation Bills (Nos. 3 and 4) 2007-08. In this sense the PAES is declared by the Additional Estimates Appropriation Bills to be a 'relevant document' to the interpretation of the Bills according to section 15AB of the *Acts Interpretation Act 1901*.

Whereas the *Mid-Year Economic and Fiscal Outlook 2007-08* is a mid-year budget report which provides updated information to allow the assessment of the Government's fiscal performance against its fiscal strategy, the PAES update the most recent budget appropriations for agencies within the portfolio.

STRUCTURE OF THE PORTFOLIO ADDITIONAL ESTIMATES STATEMENTS

The PAES are presented in three parts with subsections.

User guide	
Provides an introduction explaining the purpose of the PAES as well as information in relation to the styles and conventions used.	
Portfolio overview	
Provides an overview of the portfolio, including a chart that outlines the outcomes for agencies in the portfolio.	
Agency additional estimates statements	
A statement (under the name of the agency) for each agency affected by Additional Estimates.	
Section 1: Agency overview, variations and measures	This section details the link between the resources appropriated, the impact of any post-Budget measures, and their application to the outputs and administered items (usually programs) that contribute to the achievement of outcomes. This section also reports changes to receipts from independent sources; changes to estimates of expenses from Special Appropriations; and changes to estimated Special Account flows.
Section 2: Revisions to outcomes, administered items and outputs	This section details changes to planned Government outcomes, and / or to the contributing administered items and agency outputs.
Section 3: Budgeted financial statements	This section contains revisions to the budgeted financial statements in accrual format covering Budget year, previous year and the three out-years for each agency.
Glossary	Explains key terms.
Index (Optional)	Alphabetical guide to the Statements

STYLES AND CONVENTIONS USED

(a) The following notations may be used:

NEC/nec	not elsewhere classified
AEST	Australian Eastern Standard Time
-	nil
..	not zero, but rounded to zero
na	not applicable (unless otherwise specified)
nfp	not for publication
\$m	\$ million

(b) Figures in tables and in the text may be rounded. Discrepancies in tables between totals and sums of components are due to rounding.

ENQUIRIES

Should you have any enquiries regarding this publication please contact Craig Storen, Chief Finance Officer in the Department of Education, Employment and Workplace Relations on (02) 6200 2173.

A copy of this document can be located on the Australian Government Budget website at: <http://www.budget.gov.au>.

PORTFOLIO OVERVIEW

PORTFOLIO OVERVIEW

The Portfolio Additional Estimates Statements provide information about the Education, Employment and Workplace Relations Portfolio. Through its portfolio agencies, the Australian Government takes a national leadership role in education and training and aims to maximise the ability of working age Australians to participate in the workforce and to improve the productive performance of enterprises in Australia. The Australian Government works with various industries, State and Territory Governments, other Australian Government agencies and a range of contracted service providers to provide high quality policy, advice and services for the benefit of Australia.

The Portfolio was created as a result of the Administrative Arrangements Order (AAO) of 3 December 2007 and comprises the Department of Education, Employment and Workplace Relations (DEEWR) and the following statutory agencies:

- Australian Fair Pay Commission Secretariat;
- Australian Industrial Relations Commission and Australian Industrial Registry (AIRC/AIR);
- Australian Institute for Teaching and School Leadership Ltd (Teaching Australia);
- The Australian National University (ANU);
- The Carrick Institute for Learning and Teaching in Higher Education Ltd (Carrick Institute);
- Comcare, the Safety, Rehabilitation and Compensation Commission (SRCC), and the Seafarers' Safety, Rehabilitation and Compensation Authority (Seacare Authority);
- Office of the Australian Building and Construction Commissioner (ABCC);
- Workplace Authority; and
- Workplace Ombudsman (previously the Office of Workplace Services).

In addition to the creation of the Education, Employment and Workplace Relations (EEWR) portfolio, the AAO also resulted in:

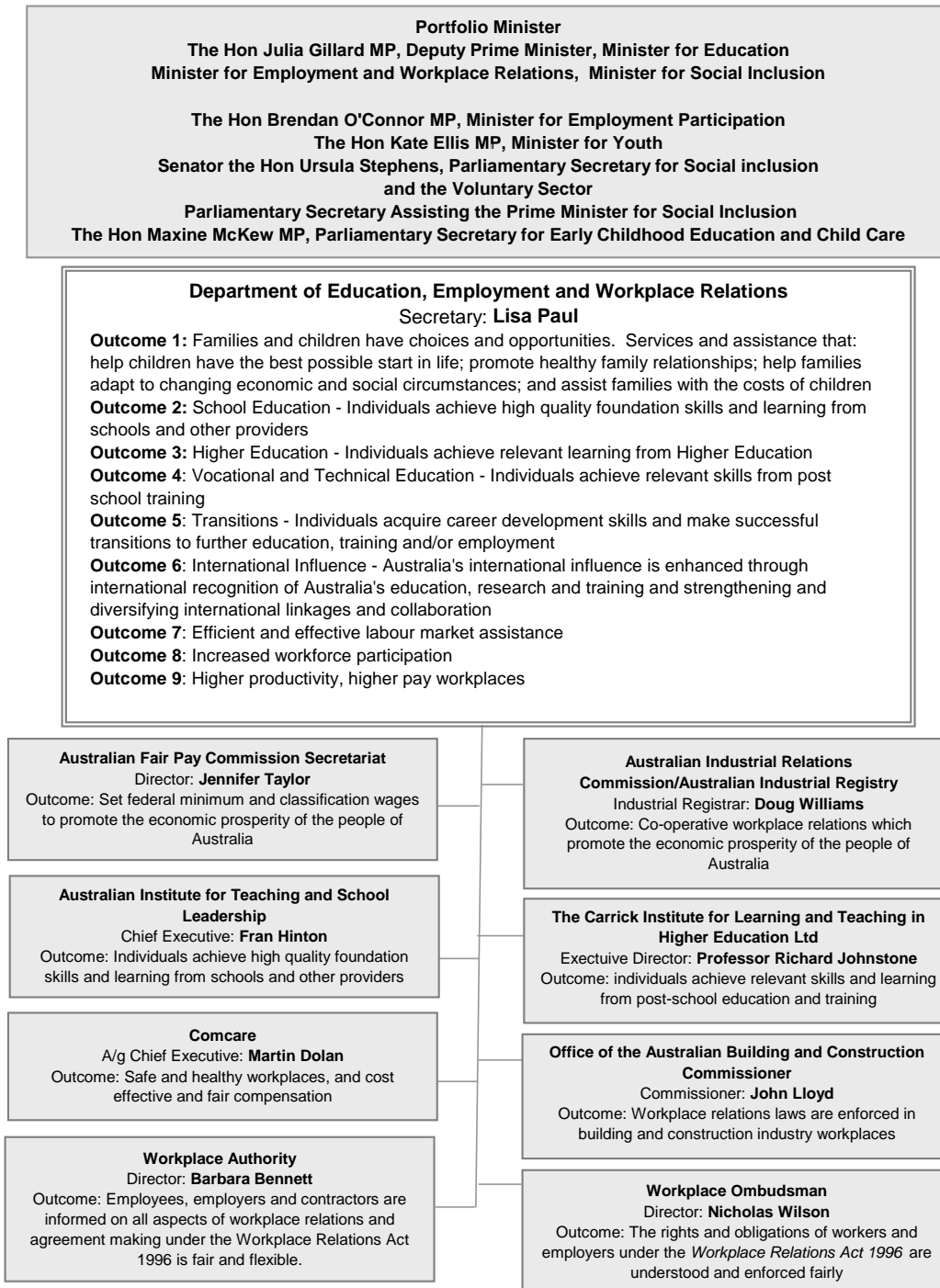
- The abolition of the Education, Science and Training (EST) and Employment and Workplace Relations (EWR) portfolios with the majority of their functions transferring to the new Education, Employment and Workplace Relations portfolio.

- The transfer of the following functions and agencies from the former EST portfolio to the Innovation, Industry, Science and Research portfolio:
 - the Science, Research and Innovation function
 - Anglo-Australian Telescope Board (AATB)
 - Australian Institute of Aboriginal and Torres Strait Islander Studies (AIATSIS)
 - Australian Institute of Marine Science (AIMS)
 - Australian Nuclear Science and Technology Organisation (ANSTO)
 - Australian Research Council (ARC)
 - Commonwealth Scientific and Industrial Research Organisation (CSIRO).
- The transfer of the following function from the former EST portfolio to the Resources, Energy and Tourism portfolio:
 - Radioactive Waste Management
- The transfer of the following functions and agencies from the former EWR portfolio to the Families, Housing, Community Services and Indigenous Affairs portfolio:
 - Community Development Employment Projects
 - Disability Support Pension
 - Indigenous Business Australia (IBA)
 - Equal Opportunity for Women in the Workplace Agency (EOWA).
- The transfer of the following function as a result of the AAO of 25 January 2008 from the Families, Housing, Community Services and Indigenous Affairs portfolio:
 - Families and children have choices and opportunities.

The former government created the Workplace Authority as a statutory body from 1 July 2007, following the transfer the Office of the Employment Advocate function from the former Department of Employment and Workplace Relations to the Workplace Authority.

Figure 1 shows the portfolio structure and outcomes.

Figure 1: Portfolio structure and outcomes



ADDITIONAL ESTIMATES AND VARIATIONS — PORTFOLIO LEVEL

Additional estimates statements are being provided for the following portfolio agencies:

- Department of Education, Employment and Workplace Relations;
- Australian Fair Pay Commission Secretariat;
- Australian Industrial Relations Commission and Australian Industrial Registry;
- The Carrick Institute for Learning and Teaching in Higher Education Ltd;
- Office of the Australian Building and Construction Commissioner;
- Workplace Authority; and
- Workplace Ombudsman.

The portfolio is seeking changes to funding of \$572.3 million (including capital) through annual appropriations. The changes are:

- a) Department of Education, Employment and Workplace Relations
 - \$10.7 million for departmental outputs;
 - \$3.3 million for departmental equity injections; and
 - \$492.2 million for annual administered expenses.
- b) Australian Fair Pay Commission
 - a reduction of \$2.3 million for departmental outputs.
- c) Office of the Australian Building and Construction Commissioner
 - a reduction of \$3.0 million for departmental outputs.
- d) Workplace Authority
 - \$45.8 million for departmental outputs; and
 - \$14.2 million for a departmental equity injection.

Portfolio Overview

e) Workplace Ombudsman

- \$7.6 million for departmental outputs; and
- \$4.0 million for a departmental equity injection.

The reasons for the variations are outlined in the additional estimates statements for each agency.

AGENCY ADDITIONAL ESTIMATES STATEMENTS

Department of Education, Employment and Workplace Relations.....	9
Australian Fair Pay Commission Secretariat	63
Australian Industrial Relations Commission and Australian Industrial Registry	85
The Carrick Institute for Learning and Teaching in Higher Education Ltd	111
Office of the Australian Building and Construction Commissioner	127
Workplace Authority	149
Workplace Ombudsman	175

