



## Higher Education Attrition Rates 1994-2002: A Brief Overview

### Summary of main findings...

- The 2002 attrition rate for all domestic students and all international students is the lowest since 1994.
  - The attrition rate for international students has declined to a greater extent than that for domestic students over the period.
- Attrition rates vary considerably across institutions and student groups.
  - School leavers commencing in undergraduate courses have a lower attrition rate than other undergraduate commencers
  - Domestic students generally have a higher attrition rate than their international counterparts
  - Postgraduate students have a higher attrition rate than undergraduate students
- Rates in the first year after commencement of a course are around double that of those in the second year.

### What are attrition rates?

Attrition rates are one of a range of indicators of outcomes used to measure performance of institutions in the higher education sector. As such they should be viewed in conjunction with other indicators to obtain a full picture of performance<sup>1</sup>. Attrition rates provide a measure of the proportion of students who 'drop out' of an award course at an institution each year.

### Why are we interested in attrition rates?

It is important for policy and program development to know if particular groups or categories of students are more inclined to drop out of higher education than others, and whether attrition is greater at particular institutions, in particular fields of education or in particular course types than in others. However, the interpretation of attrition rates is not simple. The benefits that flow from completing a university degree are well known. Participating in higher education and completing units of study

## How are the attrition rates calculated?

may also have possible positive benefits for individuals. Whether this is actually the case, and the type and level of benefit for individuals who partially complete a course, is not known.

Attrition rates (first year) measure the proportion of students in a particular year who neither graduate nor continue studying in an award course at the same institution in the following year. That is, they provide one measure of the proportion of students who 'drop out' from one year to another. As an example, an attrition rate of 16% for the University of Sydney in 2002 implies that 16% of students who were enrolled in an award course at the University of Sydney in 2002 were not enrolled at that university in an award course in 2003, and their non-enrolment was not due to completion of their course in 2002. Using this method of calculation, the attrition rate plus the retention rate plus the completion rate for a given student population in a given year will equal 100 percent.

The attrition rates provided in this paper are simple measures of attrition at an institution level. The calculation of the rates is reliant on matching a student Identification Code which is unique only within a university. Thus students who leave a course at one university and enrol the next year at another university are included in the attrition number.

In addition, those students who leave university without completing their course, but who return later to the same university, are also counted as part of attrition.

Attrition in the second year following the reference year has also been calculated for undergraduate commencing students. The crude attrition rate for the second year measures the proportion of students in a year who neither graduate nor continue studying at the same institution in the year after the following year (independent of what the student did in the following year). For example, the 2001 figure refers to the proportion of 2001 students who neither graduated in 2001 or 2002 nor were enrolled at the same university in 2003. They may or may not have been enrolled in 2002. The purpose of this data is to facilitate the identification of the most common patterns of attrition.

## What does the data tell us about attrition in higher education?

The aim of this paper is to provide a starting point for examining attrition from higher education institutions by providing crude attrition rates for a number of broad groups of students. It highlights the variations in attrition rates within the student population by providing separate rates for a number of student groups, including commencing students, commencing new to higher education students, undergraduates, postgraduates, domestic and international students, school leavers, sex and for a number of age categories.

## The findings in more detail...

By examining first and second year attrition rates it also provides a clear indication that students who do 'drop out' of a higher education institution do so early in their course.

This paper does not seek to explain the differences in attrition rates across student population groups or institutions. Nor does it explore the main factors that drive attrition rates and how these factors interact. These are quite complex issues that require different statistical techniques and additional analyses to address properly.

The crude attrition rates are provided in Appendix 1 and Appendix 2. These should be examined in conjunction with the Notes and definitions provided in Appendix 3. The main points to note from the tables are:

- The 2002 attrition rate for all domestic students was 18.5% and for international students, 17.7%. For these groups these are the lowest rates since 1994.
- There is considerable variability in the level of attrition across institutions and the different student populations analysed. (see Figure 1). Age of the student, citizenship status, level of course and whether the student is new to higher education or not seem to affect attrition rates. Student population mix, differences in the mobility of populations of the centres where institutions are located and course types offered contribute to variability across institutions.
- The attrition rates for domestic students on the whole have remained relatively stable over the years 1994 to 2002, with a slight increase in the rate for domestic commencing postgraduate students balanced by a slight fall in the attrition rate for domestic commencing undergraduate students. The rates for international students on the other hand appear to have declined slightly overall, due mainly to a relatively large drop in the attrition rate of postgraduate students (see Figures 2 and 3).
- Current attrition rates for domestic students are generally higher than those for their international counterparts, particularly at the postgraduate level. For example, the 2002 rate for all domestic commencing undergraduate students was 21.2%% compared to 18.0%% for all international commencing undergraduate students. For commencing postgraduate students the respective rates were 27.4% and 19.7%.
- Attrition rates for postgraduate students are generally higher than those for undergraduate students. This is true for both domestic and international students, although the difference is much greater for domestic students. The higher attrition rates for postgraduate students may be due to age and age related

factors (the attrition rate for older commencing undergraduates is similar to that for commencing postgraduate students). The fact that postgraduate students already have a degree and may be interested in undertaking modules as well as whole courses, greater mobility of postgraduate students across institutions, and differences in study patterns may also be factors that contribute to the difference in rates.

- Attrition rates for commencing undergraduate students (both domestic and international) are generally higher than for all domestic undergraduate students. This is consistent with other findings of a much higher attrition rate in the first year after commencement compared to second year. For example, for commencing undergraduate students (in total, new to higher education and not new to higher education) the first year attrition rate was over 20% for all years 1994 to 2002. For the second year the attrition rate for these students was around 10 to 11%.
- Young domestic commencing undergraduate students (17 to 20 years) have much lower attrition rates than their older counterparts, regardless of whether they are new to higher education or have previously enrolled in another course, and regardless of the sex of the student. 2002 attrition rates for 17-20 year old commencing undergraduates were just under 18%. The rates for those aged 21-24 were around 24%. The rates for those aged over 25 years ranged between 27.1% and 33.7% depending on age group and sex (Figure 4).
- The overall attrition rate for domestic commencing undergraduate students was very similar across the sexes, with females having a slightly lower rate (21.0% in 2002) than males (21.5%). The main difference in attrition rates for male and female students in this group were in the 30 to 39 year and 40 to 49 year age groups, with females having a lower attrition rate than males (Figure 4).
- School leavers commencing in undergraduate courses in 2002 had an attrition rate of 17.4% in 2002. This is compared with the overall rate for domestic commencing undergraduate students of 21.2%.
- The combination of lower attrition rates for younger students and a higher proportion of younger students in the population leads to a lower overall attrition rate for commencing students who are 'new to higher education' than students who have previously been enrolled in higher education. The overall attrition rate for domestic commencing students who had previously enrolled at university in another course in 2002 was 22.5% compared to 20.6% for those who had never previously been enrolled.
- However, taking the age of the student into account alters the picture. For both the younger group of students (aged 17 to 20 years) and the older group of students (the remainder) the attrition rates for those 'new to higher education' were higher than those of students who had previously been enrolled in

For further information...

another course. For 17 to 20 year olds the 2002 rate for new to higher education students was 18.3%. The rate for students of the same age who were not new to higher education was 16.2%. For older students the comparable rates were 28.6% for new to higher education students and 25.8% for those not new to higher education. Thus age of the student may be a more important contributor to attrition rates than whether the student was new to higher education or not.

Contact Maureen Maclachlan, Higher Education Analysis Section, SAEG, DEST at [Maureen.maclachlan@dest.gov.au](mailto:Maureen.maclachlan@dest.gov.au)

Tatjana Lukic  
Anne Broadbent  
Maureen Maclachlan  
Higher Education Analysis Section  
Strategic Analysis and Evaluation Group  
March 2004

1. *Characteristics and Performance Indicators of Australian Higher Education Institutions, 2000*, Occasional Paper Series 01-B, Higher Education Division, DEST
2. McMillan, J. *Course Change and Attrition from Higher Education*, Unpublished report from the ACER, February 2004

## Appendix 1: Figures

Figure 1: Crude higher education attrition rates (first year), 2002

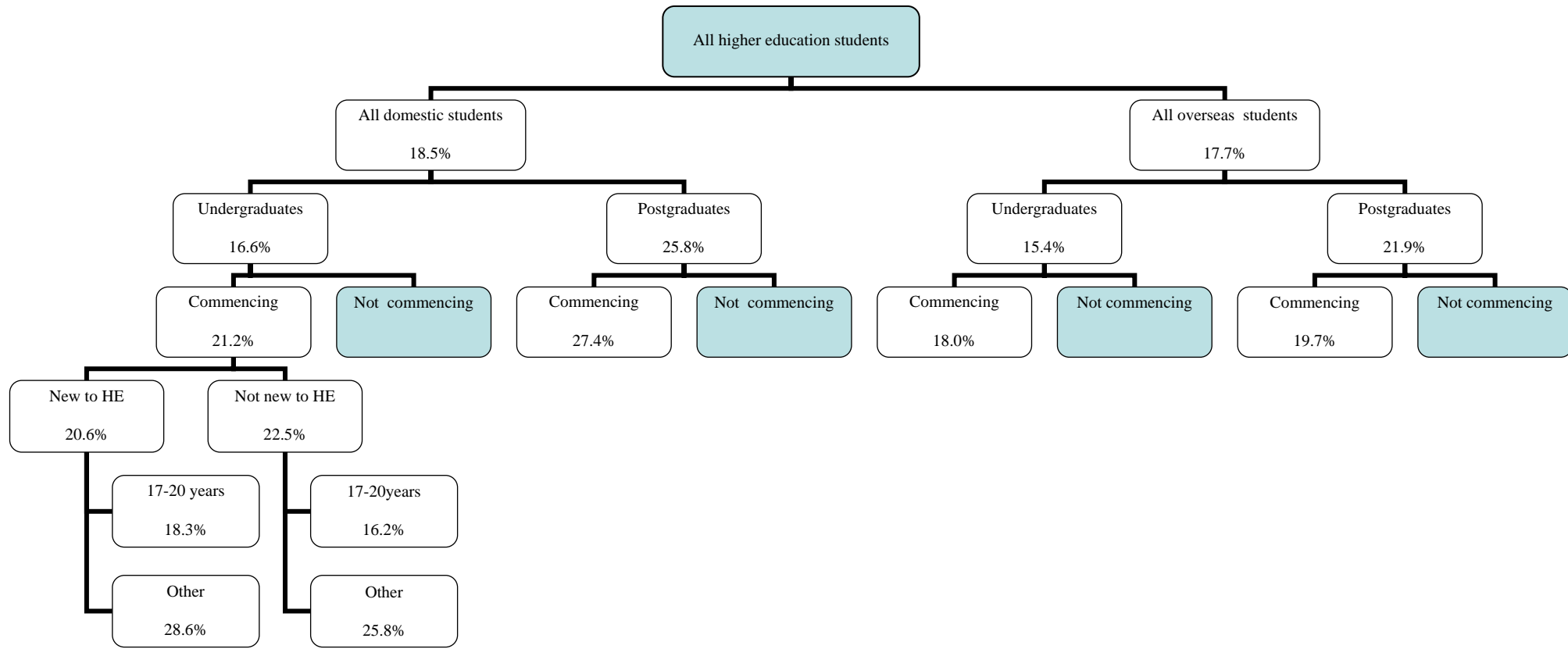


Figure 2: Crude attrition rates for commencing undergraduate students, 1994-2002

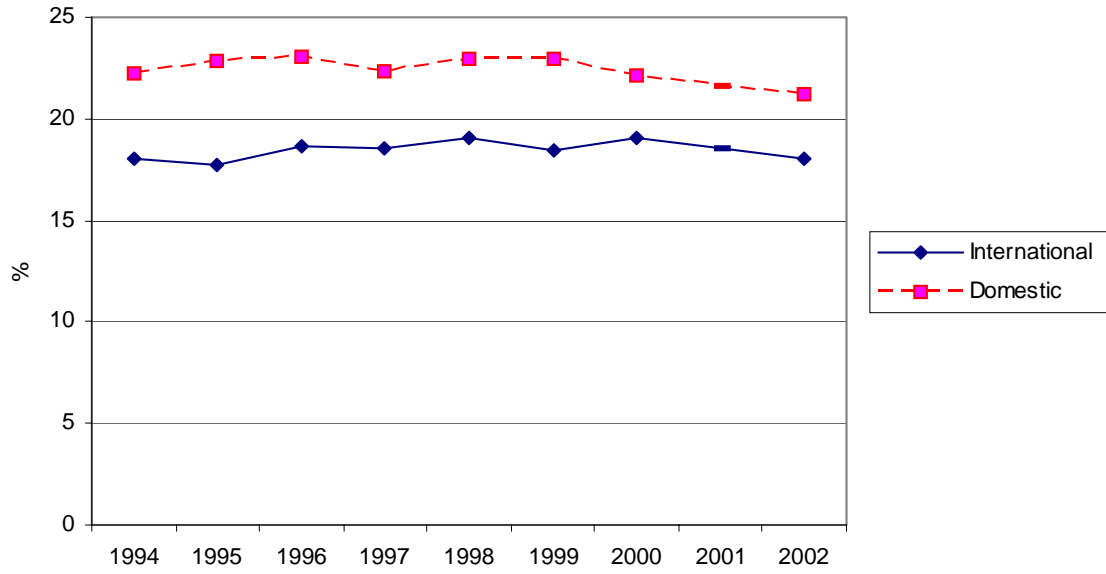


Figure 3: Crude attrition rates for commencing postgraduate students, 1994-2002

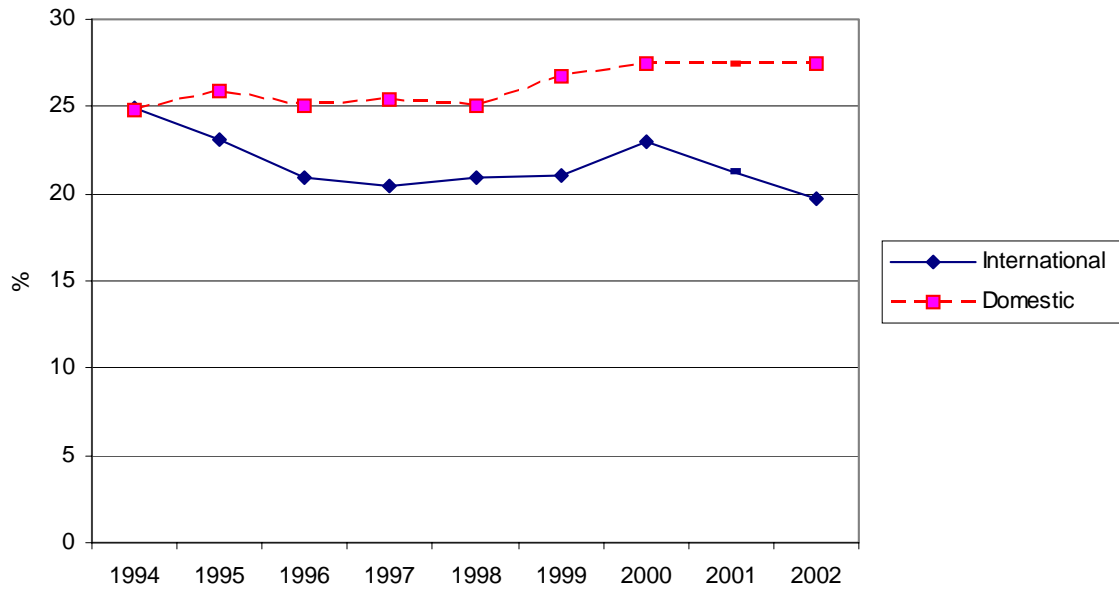
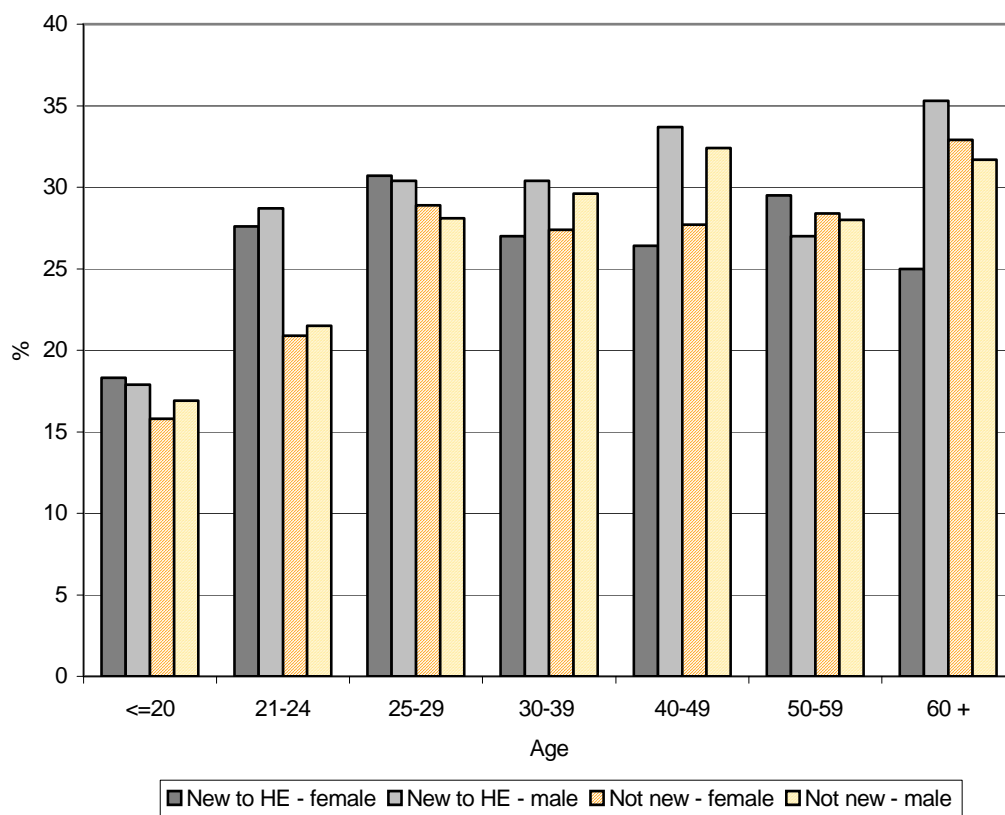


Figure 4: Crude attrition rates for commencing undergraduate students by age and sex, 2002



## Appendix 2: Tables on crude attrition rates 1994-2002

Table 1a: Crude student attrition rates for all domestic students by State and Institution, 1994-2002 (%)

State	Institution	1994	1995	1996	1997	1998	1999	2000	2001	2002
NSW	Australian Film, Television and Radio School	9.1	6.7	2.1	1.2	4.2	6.1	4.5	3.3	1.0
	Avondale College	13.8	13.3	13.7	19.1	20.0	16.8	23.6	19.5	17.9
	Charles Sturt University	19.3	20.1	19.4	22.5	21.0	20.0	19.4	19.4	20.1
	Macquarie University	21.5	23.1	21.0	19.7	20.2	22.4	19.3	16.5	15.9
	National Institute of Dramatic Art	5.6	8.8	7.8	4.8	7.1	2.7	7.5	2.6	0.6
	Southern Cross University	28.1	25.8	27.7	27.8	26.5	27.9	28.7	32.0	26.7
	The University of New England	21.5	21.1	20.8	19.6	21.6	22.6	23.2	22.4	23.5
	The University of New South Wales	15.1	14.8	14.1	14.1	14.5	14.6	25.5	14.8	15.6
	The University of Newcastle	14.5	16.3	15.9	15.6	15.1	16.0	15.5	12.8	15.1
	The University of Sydney	14.0	15.1	15.6	15.5	15.3	15.6	14.7	12.6	13.6
	University of Technology, Sydney	14.3	14.5	14.7	15.2	15.4	15.4	15.2	21.4	19.8
	University of Western Sydney	24.2	19.1	19.1	18.7	19.0	22.4	22.5	23.7	22.9
	University of Wollongong	14.8	14.6	16.0	16.8	15.9	16.7	16.1	14.0	15.0
<i>State Sub-total</i>		17.7	17.7	17.6	17.8	17.8	18.7	19.6	18.2	18.2
Victoria	Deakin University	20.3	18.8	23.7	21.2	23.3	22.3	21.2	19.7	22.0
	La Trobe University	19.6	34.8	21.6	20.4	20.2	19.8	20.1	17.1	17.9
	Monash University	18.0	17.9	18.4	19.7	18.8	18.3	18.3	15.6	15.5
	Royal Melbourne Institute of Technology	15.4	16.5	17.4	17.6	18.1	19.6	18.6	17.1	18.8
	Swinburne University of Technology	30.2	31.8	19.3	22.3	20.1	21.1	25.3	21.0	20.4
	The University of Melbourne	14.4	19.9	21.1	13.9	13.9	12.9	12.7	11.7	10.9
	University of Ballarat	19.6	20.9	19.6	19.4	18.8	20.7	19.6	19.8	17.4
	Victoria University of Technology	20.7	22.3	22.3	21.7	22.9	24.5	24.5	22.2	21.7
	<i>State Sub-total</i>	18.5	21.6	20.5	18.9	19.1	19.1	19.1	17.0	17.4
Qld	Central Queensland University	25.2	24.3	25.5	25.0	25.7	23.0	21.5	27.7	23.6
	Griffith University	19.2	19.0	18.8	19.4	21.6	21.0	22.8	26.7	22.5
	James Cook University	22.0	21.7	22.4	23.5	26.3	26.4	24.6	26.4	25.3
	Queensland University of Technology	16.9	17.6	16.5	18.4	21.9	18.2	17.0	17.2	17.2
	The University of Queensland	17.4	18.1	18.4	18.5	17.1	17.8	16.4	15.4	16.1
	University of Southern Queensland	19.8	21.0	25.1	26.1	27.7	25.3	29.5	26.4	24.6
	University of the Sunshine Coast	0.0	0.0	0.0	0.0	0.0	29.3	25.4	25.7	30.2
	<i>State Sub-total</i>	18.9	19.3	19.8	20.6	22.1	20.9	20.8	21.6	20.4
WA	Curtin University of Technology	17.9	17.9	17.3	18.3	19.4	20.0	21.0	19.2	19.0
	Edith Cowan University	25.1	25.0	24.5	25.2	24.7	24.4	23.9	21.8	22.2
	Murdoch University	19.4	20.7	17.7	19.8	20.2	17.8	16.9	17.7	17.6
	The University of Notre Dame Australia	0.0	0.0	0.0	0.0	0.0	37.4	37.2	28.9	24.3
	The University of Western Australia	13.5	14.2	13.8	14.6	13.4	14.2	13.3	13.6	12.1
	<i>State Sub-total</i>	19.3	19.7	18.8	19.9	19.8	19.7	19.6	18.5	18.4
SA	The Flinders University of South Australia	17.7	18.8	19.5	19.6	20.3	18.3	17.7	19.0	18.1
	The University of Adelaide	18.1	17.3	18.6	18.5	19.6	17.8	18.4	16.1	16.2
	University of South Australia	17.7	17.1	17.9	18.0	19.6	19.4	19.6	20.3	19.9
	<i>State Sub-total</i>	17.8	17.6	18.5	18.5	19.7	18.7	18.8	18.8	18.4
Tasmania	University of Tasmania	18.9	16.7	17.8	17.5	16.6	17.1	15.2	14.3	15.4
	<i>State Sub-total</i>	18.9	16.7	17.8	17.5	16.6	17.1	15.2	14.3	15.4
NT	Batchelor	40.3	34.8	34.4	37.5	32.5	37.4	50.3	46.5	42.6
	Northern Territory University	25.8	28.7	28.7	28.2	28.4	30.4	33.5	31.8	31.4
	<i>State Sub-total</i>	26.6	29.1	29.1	29.0	28.8	31.1	35.2	33.2	32.4
ACT	Australian Defence Force Academy	16.6	12.9	11.7	13.7	13.8	20.3	22.0	20.5	20.2
	The Australian National University	21.9	21.8	18.6	18.1	19.3	18.0	20.3	17.8	23.5
	University of Canberra	18.4	17.3	17.8	17.2	18.8	18.0	18.6	17.3	17.0
	<i>State Sub-total</i>	20.0	19.2	17.7	17.3	18.6	18.2	19.7	17.8	20.5
Multi-State	Australian Catholic University	13.7	15.5	16.1	15.4	17.4	16.3	16.6	16.5	17.1
	<i>State Sub-total</i>	13.7	15.5	16.1	15.4	17.4	16.3	16.6	16.5	17.1
<b>Total</b>		<b>18.4</b>	<b>19.3</b>	<b>19.0</b>	<b>18.9</b>	<b>19.3</b>	<b>19.3</b>	<b>19.6</b>	<b>18.6</b>	<b>18.5</b>

Table 1b: Number of all domestic students by State and Institution, 1994-2002

State	Institution	1994	1995	1996	1997	1998	1999	2000	2001	2002
NSW	Australian Film, Television and Radio School	44	45	48	83	71	82	88	91	102
	Avondale College	629	661	700	692	611	588	576	523	559
	Charles Sturt University	15978	18067	19806	21272	22156	22128	23752	24674	24719
	Macquarie University	14158	15885	16074	16643	17706	18098	17769	17986	18177
	National Institute of Dramatic Art	126	147	153	147	156	147	160	156	169
	Southern Cross University	6377	7064	8644	9098	8654	8614	8291	9205	9508
	The University of New England	13920	14083	14424	14977	15671	15881	15750	15752	16705
	The University of New South Wales	23515	23548	23887	24069	24085	24752	25741	27334	29396
	The University of Newcastle	14127	15151	15657	16251	16411	16403	16208	16433	17990
	The University of Sydney	29631	28323	29212	30783	31411	32019	31926	32063	33136
	University of Technology, Sydney	20535	20292	20874	21810	21678	21611	21891	22321	22618
	University of Western Sydney	19807	21282	23529	25046	26250	26980	26344	25800	24865
University of Wollongong	10291	10558	10669	10708	10706	10665	10448	10599	11390	
	<i>State Sub-total</i>	<i>169138</i>	<i>175106</i>	<i>183677</i>	<i>191579</i>	<i>195566</i>	<i>197968</i>	<i>198944</i>	<i>202937</i>	<i>209334</i>
Victoria	Deakin University	24358	24994	28155	26581	27050	24994	25162	27866	27556
	La Trobe University	21029	20331	20622	20868	20357	19664	19050	19316	20615
	Monash University	33780	35032	35104	34900	34516	33975	33830	34282	35284
	Royal Melbourne Institute of Technology	21022	21609	21841	22042	22057	22315	22180	22689	23924
	Swinburne University of Technology	8325	8346	8765	9755	9865	10449	10541	10421	10392
	The University of Melbourne	29113	28988	30407	31050	30563	29891	29327	29775	30317
	University of Ballarat	4041	4182	4228	4313	4304	4397	4297	4269	4311
	Victoria University of Technology	12084	13019	13749	14145	15057	15227	14879	14244	13886
		<i>State Sub-total</i>	<i>153864</i>	<i>156599</i>	<i>162957</i>	<i>163729</i>	<i>163840</i>	<i>161007</i>	<i>159374</i>	<i>163268</i>
Qld	Central Queensland University	8018	8018	9182	9997	10361	10228	10618	10964	11315
	Griffith University	16930	17526	18642	19565	19816	20508	21188	22145	23345
	James Cook University	7520	7597	7786	7998	8950	9561	9975	10513	10618
	Queensland University of Technology	24528	25928	27337	28947	29316	27167	27110	28644	30746
	The University of Queensland	24383	24550	25928	27029	27679	28202	27859	28917	30199
	University of Southern Queensland	10647	12343	13710	13956	14330	13965	14246	13593	14235
	University of the Sunshine Coast	0	0	0	0	0	2362	2592	2962	3342
		<i>State Sub-total</i>	<i>92026</i>	<i>95962</i>	<i>102585</i>	<i>107492</i>	<i>110452</i>	<i>111993</i>	<i>113588</i>	<i>117751</i>
WA	Curtin University of Technology	17546	18144	18392	19169	19118	19043	18747	18991	20120
	Edith Cowan University	15851	16407	17082	17714	16981	16945	16465	16459	17296
	Murdoch University	7694	7991	8057	9130	9439	9573	9535	9760	10115
	The University of Notre Dame Australia	0	0	0	0	0	107	274	388	1980
	The University of Western Australia	11460	11491	11949	12258	12217	12497	12570	12864	12909
		<i>State Sub-total</i>	<i>52551</i>	<i>54033</i>	<i>55480</i>	<i>58271</i>	<i>57755</i>	<i>58165</i>	<i>57591</i>	<i>58462</i>
SA	The Flinders University of South Australia	10202	11014	11279	11403	11135	10666	10833	10917	11669
	The University of Adelaide	12525	12755	13299	13599	13147	12425	11831	12547	13403
	University of South Australia	21740	21938	22675	22431	21900	22053	21473	21115	20634
		<i>State Sub-total</i>	<i>44467</i>	<i>45707</i>	<i>47253</i>	<i>47433</i>	<i>46182</i>	<i>45144</i>	<i>44137</i>	<i>44579</i>
Tasmania	University of Tasmania	10960	11216	11397	11337	11227	11406	11213	11311	12058
		<i>State Sub-total</i>	<i>10960</i>	<i>11216</i>	<i>11397</i>	<i>11337</i>	<i>11227</i>	<i>11406</i>	<i>11213</i>	<i>11311</i>
NT	Batchelor	243	290	326	395	375	414	445	432	427
	Northern Territory University	3781	4139	4181	4003	3863	4033	4030	4001	4425
		<i>State Sub-total</i>	<i>4024</i>	<i>4429</i>	<i>4507</i>	<i>4398</i>	<i>4238</i>	<i>4447</i>	<i>4475</i>	<i>4433</i>
ACT	Australian Defence Force Academy	1313	1341	1466	1615	1652	1677	1497	1518	1569
	The Australian National University	9302	9295	9067	8857	8649	8403	8380	8287	9090
	University of Canberra	8163	7913	8031	8110	8407	8067	7743	7669	7783
		<i>State Sub-total</i>	<i>18778</i>	<i>18549</i>	<i>18564</i>	<i>18582</i>	<i>18708</i>	<i>18147</i>	<i>17620</i>	<i>17474</i>
Multi-State	Australian Catholic University	8438	8867	8591	9266	10236	9924	9679	9675	10416
		<i>State Sub-total</i>	<i>8438</i>	<i>8867</i>	<i>8591</i>	<i>9266</i>	<i>10236</i>	<i>9924</i>	<i>9679</i>	<i>9675</i>
<b>Total</b>		<b>554246</b>	<b>570468</b>	<b>595011</b>	<b>612087</b>	<b>618204</b>	<b>618201</b>	<b>616621</b>	<b>629890</b>	<b>653695</b>

Table 2a: Crude student attrition rates for domestic undergraduate students by State and Institution, 1994-2002 (%)

State	Institution	1994	1995	1996	1997	1998	1999	2000	2001	2002
NSW	Australian Film, Television and Radio School	9.1	6.7	2.1	0.0	0.0	0.0	0.0	0.0	0.0
	Avondale College	13.8	13.3	13.4	19.4	19.1	17.3	22.7	19.6	18.1
	Charles Sturt University	17.9	18.9	18.5	21.6	20.0	19.1	18.1	18.2	18.7
	Macquarie University	15.7	19.0	17.0	14.6	15.7	18.3	15.2	13.5	14.0
	National Institute of Dramatic Art	5.7	9.6	7.9	5.2	7.0	2.9	8.1	2.6	0.6
	Southern Cross University	27.2	25.2	27.3	26.5	25.9	27.3	28.4	31.8	27.2
	The University of New England	21.2	20.6	20.0	18.7	21.1	23.6	23.6	22.6	23.5
	The University of New South Wales	11.8	11.3	10.8	10.5	11.1	10.8	20.8	9.5	10.4
	The University of Newcastle	13.5	15.3	14.8	14.4	13.5	14.2	14.2	11.3	13.1
	The University of Sydney	11.1	11.1	11.7	12.0	12.2	12.3	11.9	10.7	11.0
	University of Technology, Sydney	11.9	11.5	11.5	11.9	12.1	12.0	11.4	17.5	15.6
	University of Western Sydney	22.8	18.0	18.0	17.1	18.1	21.5	20.6	22.4	19.8
	University of Wollongong	12.3	12.1	12.5	13.5	12.5	14.8	14.2	12.8	13.2
<i>State Sub-total</i>		15.6	15.4	15.4	15.4	15.6	16.7	17.2	16.2	15.9
Victoria	Deakin University	18.2	17.2	22.2	19.4	21.2	21.6	20.8	19.2	17.9
	La Trobe University	18.2	35.0	20.0	18.6	18.5	19.0	18.8	15.8	16.7
	Monash University	15.7	15.4	16.1	17.8	16.3	16.0	16.0	13.6	13.6
	Royal Melbourne Institute of Technology	14.1	14.1	14.1	14.3	14.4	16.3	15.4	13.4	14.9
	Swinburne University of Technology	26.0	27.1	18.0	17.1	16.7	17.0	20.6	16.4	16.6
	The University of Melbourne	11.2	13.5	19.4	10.4	10.0	9.8	9.1	8.4	7.9
	University of Ballarat	18.3	19.0	18.5	18.5	18.3	19.9	19.4	18.2	16.3
	Victoria University of Technology	19.0	19.8	20.2	19.6	21.5	23.2	23.6	20.5	20.6
	<i>State Sub-total</i>		16.3	19.0	18.5	16.5	16.7	17.1	17.1	14.9
Qld	Central Queensland University	24.2	23.9	24.4	24.1	25.0	22.1	21.0	26.9	22.7
	Griffith University	18.4	17.9	17.7	18.3	20.6	20.7	22.0	23.2	21.2
	James Cook University	20.3	20.1	20.4	21.8	24.7	26.0	23.7	25.4	24.4
	Queensland University of Technology	15.3	15.8	14.5	16.2	20.6	16.3	15.5	15.2	16.0
	The University of Queensland	15.3	15.5	16.1	16.0	14.8	16.0	14.9	13.2	13.5
	University of Southern Queensland	19.2	20.1	23.4	24.1	24.6	24.7	28.0	25.0	24.0
	University of the Sunshine Coast	0.0	0.0	0.0	0.0	0.0	29.3	25.6	25.8	30.3
	<i>State Sub-total</i>		17.6	17.7	18.0	18.7	20.4	19.8	19.6	19.8
WA	Curtin University of Technology	15.5	15.3	14.4	15.2	16.5	17.2	18.1	16.4	16.5
	Edith Cowan University	23.6	23.4	23.1	23.9	23.7	24.0	23.4	21.1	21.6
	Murdoch University	15.7	17.5	15.5	17.3	18.4	17.0	16.0	16.1	16.3
	The University of Notre Dame Australia	0.0	0.0	0.0	0.0	0.0	30.0	39.4	27.9	20.3
	The University of Western Australia	11.2	11.3	11.5	11.9	11.4	12.1	11.3	10.9	10.0
	<i>State Sub-total</i>		17.2	17.4	16.8	17.6	18.0	18.2	18.0	16.6
SA	The Flinders University of South Australia	15.3	16.1	16.4	16.4	15.9	16.7	16.0	16.4	16.7
	The University of Adelaide	14.8	14.3	14.6	15.2	14.5	16.0	15.9	14.5	14.8
	University of South Australia	15.9	14.8	16.1	16.5	18.1	18.0	18.2	18.7	18.2
	<i>State Sub-total</i>		15.4	15.0	15.8	16.1	16.6	17.2	17.1	17.0
Tasmania	University of Tasmania	16.8	15.8	16.5	16.7	15.7	16.2	14.9	13.9	14.8
	<i>State Sub-total</i>		16.8	15.8	16.5	16.7	15.7	16.2	14.9	14.8
NT	Batchelor	43.1	36.1	33.8	36.9	33.4	37.1	50.5	46.2	43.3
	Northern Territory University	25.2	28.8	27.9	27.5	26.0	29.2	32.1	31.6	30.5
	<i>State Sub-total</i>		26.4	29.4	28.4	28.5	26.8	30.0	34.3	33.3
ACT	Australian Defence Force Academy	13.5	9.3	6.9	9.4	9.4	12.9	13.5	11.8	9.8
	The Australian National University	15.5	15.2	13.6	13.1	13.0	14.4	15.1	12.4	21.3
	University of Canberra	16.2	15.4	16.1	15.3	17.0	16.7	17.4	15.4	14.6
	<i>State Sub-total</i>		15.7	14.9	14.2	13.8	14.6	15.4	16.1	13.8
Multi-State	Australian Catholic University	13.2	14.7	15.5	14.6	17.0	15.0	14.5	14.9	15.4
	<i>State Sub-total</i>		13.2	14.7	15.5	14.6	17.0	15.0	14.5	14.9
<b>Total</b>		<b>16.3</b>	<b>17.0</b>	<b>17.0</b>	<b>16.6</b>	<b>17.1</b>	<b>17.6</b>	<b>17.7</b>	<b>16.7</b>	<b>16.6</b>

Table 2b: Number of domestic undergraduate students by State and Institution, 1994-2002

State	Institution	1994	1995	1996	1997	1998	1999	2000	2001	2002
NSW	Australian Film, Television and Radio School	44	45	48	32	10	0	0	0	0
	Avondale College	629	611	648	624	554	538	537	500	519
	Charles Sturt University	13142	14592	15875	16748	17555	17732	19221	19956	19752
	Macquarie University	10547	11947	11860	12077	12866	13364	13162	13317	13129
	National Institute of Dramatic Art	123	136	139	135	142	138	149	151	154
	Southern Cross University	5361	5910	7225	7635	7536	7510	7230	7952	8065
	The University of New England	9818	9800	9794	9835	10690	11592	12009	12332	12957
	The University of New South Wales	16832	16562	16482	16669	16718	16779	17560	18454	19372
	The University of Newcastle	12603	13503	13896	14123	14138	14152	14060	14027	15117
	The University of Sydney	22607	21180	21803	23501	24259	25177	25503	25917	26364
	University of Technology, Sydney	14894	14762	15241	15918	15450	15089	15344	15852	15759
	University of Western Sydney	16929	18008	19774	21048	22323	22915	22169	22232	21430
	University of Wollongong	7959	7936	8025	8217	8364	8691	8655	8907	9534
<i>State Sub-total</i>	<i>131488</i>	<i>134992</i>	<i>140810</i>	<i>146562</i>	<i>150605</i>	<i>153677</i>	<i>155599</i>	<i>159597</i>	<i>162152</i>	
Victoria	Deakin University	18653	18988	21602	20692	21337	19941	20173	20414	19682
	La Trobe University	17057	16311	16283	16510	16351	15930	15434	15776	16795
	Monash University	25313	26288	26623	26676	26498	25904	25903	26016	26175
	Royal Melbourne Institute of Technology	16676	16472	16377	16623	16679	16881	16681	16404	17005
	Swinburne University of Technology	6607	6533	6910	7440	7776	8197	7995	7624	7555
	The University of Melbourne	21251	20790	21611	22353	21981	21596	21041	21244	21415
	University of Ballarat	3495	3514	3548	3633	3652	3730	3620	3589	3604
	University of Victoria	9925	10439	11012	11376	12270	12578	12507	12030	11531
	Victoria University of Technology	119089	119433	124052	125378	126615	124852	123462	123196	123858
	<i>State Sub-total</i>	<i>119089</i>	<i>119433</i>	<i>124052</i>	<i>125378</i>	<i>126615</i>	<i>124852</i>	<i>123462</i>	<i>123196</i>	<i>123858</i>
Qld	Central Queensland University	6522	6519	7463	8164	8710	8914	9525	9853	9949
	Griffith University	14713	15118	15936	16711	17082	17877	18420	19197	20110
	James Cook University	6352	6356	6448	6665	7627	8304	8754	9367	9457
	Queensland University of Technology	19689	20638	21592	22939	23290	21586	22059	23543	25622
	The University of Queensland	19444	19541	20656	21446	22286	23099	22783	23410	23792
	University of Southern Queensland	9395	10516	11204	11027	11010	10986	11128	10579	10898
	University of the Sunshine Coast	0	0	0	0	0	2253	2454	2772	3106
	<i>State Sub-total</i>	<i>76115</i>	<i>78688</i>	<i>83299</i>	<i>86952</i>	<i>90005</i>	<i>93019</i>	<i>95123</i>	<i>98721</i>	<i>102934</i>
WA	Curtin University of Technology	13797	14055	14286	14890	15137	15062	14867	15080	15951
	Edith Cowan University	13663	14095	14458	14780	14367	14528	14235	14224	14702
	Murdoch University	6022	6264	6354	7255	7782	8147	7987	8107	8420
	The University of Notre Dame Australia	0	0	0	0	0	80	213	341	1568
	The University of Western Australia	9181	9199	9516	9634	9626	9850	10002	10241	10208
	<i>State Sub-total</i>	<i>42663</i>	<i>43613</i>	<i>44614</i>	<i>46559</i>	<i>46912</i>	<i>47667</i>	<i>47304</i>	<i>47993</i>	<i>50849</i>
SA	The Flinders University of South Australia	8236	8862	9022	9186	8911	8916	8883	8978	9588
	The University of Adelaide	9740	9855	10199	10485	10157	9997	9551	10115	10664
	University of South Australia	17746	17797	18195	17880	17893	18550	18216	17964	17514
	<i>State Sub-total</i>	<i>35722</i>	<i>36514</i>	<i>37416</i>	<i>37551</i>	<i>36961</i>	<i>37463</i>	<i>36650</i>	<i>37057</i>	<i>37766</i>
Tasmania	University of Tasmania	9196	9483	9650	9837	9815	9986	9782	9910	10506
	<i>State Sub-total</i>	<i>9196</i>	<i>9483</i>	<i>9650</i>	<i>9837</i>	<i>9815</i>	<i>9986</i>	<i>9782</i>	<i>9910</i>	<i>10506</i>
NT	Batchelor	216	280	311	382	359	402	436	411	413
	Northern Territory University	3059	3402	3399	3225	3030	3169	3206	3193	3376
	<i>State Sub-total</i>	<i>3275</i>	<i>3682</i>	<i>3710</i>	<i>3607</i>	<i>3389</i>	<i>3571</i>	<i>3642</i>	<i>3604</i>	<i>3789</i>
ACT	Australian Defence Force Academy	963	986	1061	1181	1178	1152	895	836	806
	The Australian National University	7410	7400	7102	6964	6756	6681	6496	6437	7049
	University of Canberra	6505	6274	6337	6524	6981	6785	6469	6241	6214
	<i>State Sub-total</i>	<i>14878</i>	<i>14660</i>	<i>14500</i>	<i>14669</i>	<i>14915</i>	<i>14618</i>	<i>13860</i>	<i>13514</i>	<i>14069</i>
Multi-State	Australian Catholic University	6461	6656	6456	6907	7660	7492	7237	7168	7773
	<i>State Sub-total</i>	<i>6461</i>	<i>6656</i>	<i>6456</i>	<i>6907</i>	<i>7660</i>	<i>7492</i>	<i>7237</i>	<i>7168</i>	<i>7773</i>
<b>Total</b>		<b>438887</b>	<b>447721</b>	<b>464507</b>	<b>478022</b>	<b>486877</b>	<b>492345</b>	<b>492659</b>	<b>500760</b>	<b>513696</b>

Table 3a: Crude student attrition rates for domestic commencing undergraduate students by State and Institution, 1994-2002 (%)

State	Institution	1994	1995	1996	1997	1998	1999	2000	2002
NSW	Australian Film, Television and Radio School	9.1	6.7	0.0	0.0	0.0	0.0	0.0	0.0
	Avondale College	20.5	18.5	21.4	23.3	30.4	23.3	35.7	28.3
	Charles Sturt University	25.3	25.3	25.4	27.7	26.0	22.6	21.3	24.0
	Macquarie University	21.9	25.6	23.7	20.6	20.8	20.7	18.7	17.6
	National Institute of Dramatic Art	7.7	18.5	7.4	12.7	11.5	5.6	16.1	1.9
	Southern Cross University	33.1	30.6	34.4	34.7	34.0	35.9	32.4	32.8
	The University of New England	27.8	28.7	28.0	26.7	28.5	30.2	29.9	30.7
	The University of New South Wales	14.0	13.0	13.2	12.5	13.5	13.1	13.5	13.3
	The University of Newcastle	19.4	21.7	21.1	19.9	18.2	18.5	18.4	18.1
	The University of Sydney	16.1	15.7	17.2	16.7	16.8	17.5	17.0	14.6
	University of Technology, Sydney	16.0	14.5	15.8	16.1	15.9	15.9	13.8	13.4
	University of Western Sydney	31.8	25.1	24.2	23.1	24.1	27.7	25.2	21.3
	University of Wollongong	14.9	16.7	16.0	17.3	16.4	18.6	17.1	15.6
	<i>State Sub-total</i>	21.7	21.5	21.6	21.1	21.3	21.8	20.4	19.7
Victoria	Deakin University	25.9	24.0	32.4	27.2	29.0	28.9	26.9	22.1
	La Trobe University	27.1	44.0	28.6	25.6	24.9	25.3	25.6	23.1
	Monash University	19.6	19.0	18.3	19.7	19.0	17.6	18.3	16.3
	Royal Melbourne Institute of Technology	18.5	17.7	17.1	17.7	17.9	21.1	18.4	17.9
	Swinburne University of Technology	24.3	23.2	21.1	23.1	20.3	22.1	23.4	21.2
	The University of Melbourne	13.8	17.7	25.1	13.5	12.8	12.3	11.6	10.8
	University of Ballarat	25.9	24.9	23.9	24.9	21.9	25.5	24.8	21.4
	Victoria University of Technology	26.7	25.9	25.8	23.5	26.4	27.9	27.5	23.8
		<i>State Sub-total</i>	21.7	24.2	24.5	21.3	21.6	22.0	21.5
Qld	Central Queensland University	34.4	30.2	31.2	32.4	33.2	29.1	25.3	27.8
	Griffith University	24.1	23.2	22.4	24.5	26.0	26.6	26.5	26.0
	James Cook University	26.9	26.7	27.2	29.8	31.5	34.6	29.8	34.0
	Queensland University of Technology	20.8	21.8	19.3	21.6	29.9	21.1	20.7	21.8
	The University of Queensland	21.0	21.6	22.3	21.6	19.1	19.9	18.9	18.3
	University of Southern Queensland	28.4	27.7	30.7	31.1	32.6	30.9	34.6	28.5
	University of the Sunshine Coast	0.0	0.0	0.0	0.0	0.0	38.2	32.4	41.9
		<i>State Sub-total</i>	24.3	24.0	24.0	25.1	27.4	25.8	24.9
WA	Curtin University of Technology	19.7	19.8	18.4	19.5	20.0	19.8	21.4	21.8
	Edith Cowan University	31.7	30.7	30.9	32.2	30.3	31.0	30.1	27.2
	Murdoch University	20.2	22.4	20.9	23.3	24.6	21.4	20.9	22.6
	The University of Notre Dame Australia	0.0	0.0	0.0	0.0	0.0	36.1	37.2	24.6
	The University of Western Australia	17.2	17.0	18.0	17.5	17.8	17.7	15.9	12.9
		<i>State Sub-total</i>	23.5	23.7	23.3	24.2	23.8	23.5	23.2
SA	The Flinders University of South Australia	20.0	22.3	22.3	21.2	20.8	22.2	21.4	22.8
	The University of Adelaide	18.5	19.1	19.9	21.0	17.9	18.9	19.3	18.9
	University of South Australia	21.1	19.4	21.6	21.9	23.3	22.5	21.6	23.2
		<i>State Sub-total</i>	20.2	20.1	21.3	21.5	21.3	21.6	21.0
Tasmania	University of Tasmania	22.3	21.4	23.1	22.2	21.0	21.8	19.7	20.0
		<i>State Sub-total</i>	22.3	21.4	23.1	22.2	21.0	21.8	19.7
NT	Batchelor	25.0	33.1	35.2	39.4	31.0	39.0	52.3	44.4
	Northern Territory University	32.5	36.6	37.9	35.5	32.1	37.7	42.0	36.9
		<i>State Sub-total</i>	32.4	36.3	37.6	36.0	32.0	37.9	43.6
ACT	Australian Defence Force Academy	8.6	10.5	8.3	8.3	6.8	11.8	8.0	4.7
	The Australian National University	18.1	17.4	17.0	16.2	18.7	20.2	18.3	18.7
	University of Canberra	22.2	22.0	22.3	21.8	22.3	24.2	22.4	20.3
		<i>State Sub-total</i>	19.1	18.9	18.8	18.2	19.7	21.6	19.9
Multi-State	Australian Catholic University								
		18.7	21.2	23.9	22.1	24.9	21.4	21.1	21.4
	<i>State Sub-total</i>	18.7	21.2	23.9	22.1	24.9	21.4	21.1	21.4
<b>Total</b>		<b>22.2</b>	<b>22.8</b>	<b>23.1</b>	<b>22.3</b>	<b>22.9</b>	<b>23.0</b>	<b>22.1</b>	<b>21.2</b>

**Table 3b: Number of domestic commencing undergraduate students by State and Institution, 1994-2002**

State	Institution	1994	1995	1996	1997	1998	1999	2000	2002
<b>NSW</b>	Australian Film, Television and Radio School	44	45	15	0	0	0	0	0
	Avondale College	234	243	294	219	230	193	182	180
	Charles Sturt University	5194	6485	6334	6520	7288	6834	8084	5917
	Macquarie University	3148	4613	4056	3619	4088	4294	3926	2924
	National Institute of Dramatic Art	52	54	54	55	52	54	56	53
	Southern Cross University	2426	2782	3475	3262	3077	2938	2688	2990
	The University of New England	3419	3565	3567	3434	4005	4813	4591	4445
	The University of New South Wales	4887	4735	4798	5005	4927	5164	5693	4958
	The University of Newcastle	4225	5342	4983	4951	4371	4541	4596	4949
	The University of Sydney	6667	6443	8292	8366	8326	8879	8789	7994
	University of Technology, Sydney	4500	4374	4695	5071	4306	4243	4677	4077
	University of Western Sydney	6242	7588	8321	8038	8402	8470	7896	7131
University of Wollongong	2480	2601	2655	2752	2779	2919	2864	2982	
	<i>State Sub-total</i>	<b>43518</b>	<b>48870</b>	<b>51539</b>	<b>51292</b>	<b>51851</b>	<b>53342</b>	<b>54042</b>	<b>48600</b>
<b>Victoria</b>	Deakin University	6125	6623	8558	6870	7398	6027	7173	5929
	La Trobe University	5840	5775	6163	6011	5452	5505	5497	5981
	Monash University	8175	9099	8674	8424	8391	7954	8827	7489
	Royal Melbourne Institute of Technology	5094	5037	5048	5077	5186	5407	4971	5451
	Swinburne University of Technology	2002	2069	2407	2619	2784	2918	2256	2228
	The University of Melbourne	6718	5929	6921	6788	5977	5739	5765	5907
	University of Ballarat	1248	1367	1454	1438	1341	1370	1324	1250
	Victoria University of Technology	3879	4229	4381	4567	5169	5194	5134	4052
		<i>State Sub-total</i>	<b>39115</b>	<b>40157</b>	<b>43630</b>	<b>41817</b>	<b>41726</b>	<b>40160</b>	<b>40978</b>
<b>Qld</b>	Central Queensland University	2652	2655	3497	3529	3519	3621	3993	3199
	Griffith University	5680	5742	6468	6411	6237	7426	7452	6647
	James Cook University	2182	2521	2562	2698	3525	3529	3713	3372
	Queensland University of Technology	7226	7718	7987	8439	8074	7336	8295	8980
	The University of Queensland	6238	6429	7445	7727	7923	8081	7559	7301
	University of Southern Queensland	3196	3792	4172	3836	3943	3986	4115	3374
	University of the Sunshine Coast	0	0	0	0	0	1050	1051	1139
	<i>State Sub-total</i>	<b>27174</b>	<b>28857</b>	<b>32131</b>	<b>32640</b>	<b>33221</b>	<b>35029</b>	<b>36178</b>	<b>34012</b>
<b>WA</b>	Curtin University of Technology	4226	4411	4498	4868	4933	4676	4776	5070
	Edith Cowan University	5110	5712	5642	5614	5321	5546	5117	4501
	Murdoch University	2272	2261	2236	2935	2912	3135	2760	2632
	The University of Notre Dame Australia	0	0	0	0	0	36	156	578
	The University of Western Australia	2895	2894	2984	2938	3000	3201	3188	2918
		<i>State Sub-total</i>	<b>14503</b>	<b>15278</b>	<b>15360</b>	<b>16355</b>	<b>16166</b>	<b>16594</b>	<b>15997</b>
<b>SA</b>	The Flinders University of South Australia	2811	3479	3255	3313	2858	3049	3127	3594
	The University of Adelaide	3049	3337	3475	3513	3114	3008	2893	3406
	University of South Australia	6351	6542	6540	6138	6360	7025	6063	5685
		<i>State Sub-total</i>	<b>12211</b>	<b>13358</b>	<b>13270</b>	<b>12964</b>	<b>12332</b>	<b>13082</b>	<b>12083</b>
<b>Tasmania</b>	University of Tasmania	3154	3656	3603	3566	3550	3674	3442	4032
		<i>State Sub-total</i>	<b>3154</b>	<b>3656</b>	<b>3603</b>	<b>3566</b>	<b>3550</b>	<b>3674</b>	<b>3442</b>
<b>NT</b>	Batchelor	4	121	165	221	155	300	279	320
	Northern Territory University	1232	1596	1601	1352	1587	1524	1485	1259
		<i>State Sub-total</i>	<b>1236</b>	<b>1717</b>	<b>1766</b>	<b>1573</b>	<b>1742</b>	<b>1824</b>	<b>1764</b>
<b>ACT</b>	Australian Defence Force Academy	383	400	411	457	425	355	212	276
	The Australian National University	2463	2568	2397	2308	1742	1795	1880	2163
	University of Canberra	2082	2327	2515	2600	2773	2239	2123	1953
		<i>State Sub-total</i>	<b>4928</b>	<b>5295</b>	<b>5323</b>	<b>5365</b>	<b>4940</b>	<b>4389</b>	<b>4215</b>
<b>Multi-State</b>	Australian Catholic University	2479	2889	2487	2988	3138	2607	2436	3064
		<i>State Sub-total</i>	<b>2479</b>	<b>2889</b>	<b>2487</b>	<b>2988</b>	<b>3138</b>	<b>2607</b>	<b>2436</b>
<b>Total</b>		<b>148318</b>	<b>160077</b>	<b>169109</b>	<b>168560</b>	<b>168666</b>	<b>170701</b>	<b>171135</b>	<b>162387</b>

**Table 4a: Crude student attrition rates in second year after commencement, for domestic commencing undergraduate students by State and Institution, 1994-2001 (%)**

State	Institution	1994	1995	1996	1997	1998	1999	2001
NSW	Australian Film, Television and Radio School	4.8	0.0	0.0	0.0	0.0	0.0	0.0
	Avondale College	6.4	8.6	20.1	9.6	13.0	16.6	9.9
	Charles Sturt University	11.6	11.9	12.3	12.0	11.7	11.1	11.7
	Macquarie University	11.7	10.2	9.0	11.1	10.6	9.8	9.0
	National Institute of Dramatic Art	5.8	11.1	0.0	7.3	1.9	5.6	0.0
	Southern Cross University	10.9	12.0	13.9	13.8	13.6	13.2	14.2
	The University of New England	12.6	11.8	10.7	12.6	14.2	14.3	14.3
	The University of New South Wales	8.4	8.0	8.6	8.1	7.8	9.7	6.6
	The University of Newcastle	9.7	9.9	9.9	9.6	10.1	9.8	9.1
	The University of Sydney	7.2	7.3	8.0	8.2	8.5	8.5	7.1
	University of Technology, Sydney	8.0	7.1	8.3	8.1	7.3	7.5	8.5
	University of Western Sydney	9.1	10.2	10.0	10.6	12.8	12.0	9.3
	University of Wollongong	9.1	8.3	9.1	8.9	9.8	9.6	8.0
<i>State Sub-total</i>		9.6	9.6	9.9	10.1	10.6	10.5	9.7
Victoria	Deakin University	10.3	11.9	11.1	11.5	12.8	12.4	11.4
	La Trobe University	22.4	8.0	10.8	12.4	12.3	12.0	10.1
	Monash University	9.4	10.6	11.7	11.2	9.9	10.0	9.4
	Royal Melbourne Institute of Technology	9.5	9.1	10.4	9.5	10.8	10.2	9.6
	Swinburne University of Technology	13.2	10.6	11.7	11.1	11.9	13.8	11.5
	The University of Melbourne	11.8	15.5	6.6	7.9	8.3	7.3	6.5
	University of Ballarat	11.3	10.2	10.7	11.0	12.8	11.2	10.6
	Victoria University of Technology	10.7	10.9	12.6	13.2	14.1	13.4	12.6
	<i>State Sub-total</i>	12.4	11.0	10.6	10.9	11.4	11.1	9.9
Qld	Central Queensland University	12.6	13.2	12.3	14.0	12.1	11.2	14.3
	Griffith University	10.8	10.3	12.0	13.4	12.0	14.0	12.1
	James Cook University	11.7	12.9	12.5	13.4	14.1	13.7	12.6
	Queensland University of Technology	10.1	9.6	12.2	15.9	9.8	10.3	10.0
	The University of Queensland	8.4	8.8	9.8	9.4	11.0	9.7	8.7
	University of Southern Queensland	12.7	16.0	16.1	14.7	14.9	16.6	14.4
	University of the Sunshine Coast	0.0	0.0	0.0	0.0	0.0	13.9	15.1
<i>State Sub-total</i>	10.5	11.0	12.1	13.3	11.8	12.2	11.4	
WA	Curtin University of Technology	11.1	9.9	10.2	9.8	12.4	12.3	9.9
	Edith Cowan University	12.9	12.5	12.2	13.9	13.2	13.4	12.5
	Murdoch University	12.0	10.0	11.3	12.3	10.3	12.2	10.4
	The University of Notre Dame Australia	0.0	0.0	0.0	0.0	0.0	0.0	13.4
	The University of Western Australia	8.2	8.6	9.8	8.7	8.5	8.8	7.4
	<i>State Sub-total</i>	11.3	10.6	11.0	11.5	11.6	12.0	10.3
SA	The Flinders University of South Australia	9.7	10.8	11.1	10.7	10.8	9.9	10.0
	The University of Adelaide	8.6	8.2	9.0	9.6	9.8	9.4	9.1
	University of South Australia	9.7	10.8	11.8	12.7	11.5	13.4	10.8
	<i>State Sub-total</i>	9.4	10.1	10.9	11.4	10.9	11.6	10.1
Tasmania	University of Tasmania	10.2	10.5	11.2	10.2	10.1	10.3	9.6
	<i>State Sub-total</i>	10.2	10.5	11.2	10.2	10.1	10.3	9.6
NT	Batchelor	na	21.5	10.3	19.5	25.2	14.2	19.8
	Northern Territory University	14.4	11.9	17.9	16.0	13.3	14.2	15.3
	<i>State Sub-total</i>	14.4	12.7	17.1	16.6	14.7	14.2	16.1
ACT	Australian Defence Force Academy	7.0	5.5	9.2	9.2	12.5	11.5	6.0
	The Australian National University	12.1	10.5	10.3	9.8	11.9	11.3	10.6
	University of Canberra	9.7	10.7	74.3	0.0	11.2	11.9	10.2
	<i>State Sub-total</i>	10.7	10.2	40.7	4.9	11.5	11.7	10.4
Multi-State	Australian Catholic University	7.9	7.3	6.8	9.7	8.8	7.8	7.7
	<i>State Sub-total</i>	7.9	7.3	6.8	9.7	8.8	7.8	7.7
<b>Total</b>		<b>10.7</b>	<b>10.4</b>	<b>11.7</b>	<b>11.0</b>	<b>11.2</b>	<b>11.2</b>	<b>10.2</b>

Table 4b: Number of domestic commencing undergraduate students by State and Institution, 1994-2001

State	Institution	1994	1995	1996	1997	1998	1999	2001
NSW	Australian Film, Television and Radio School	44	45	15	0	0	0	0
	Avondale College	234	243	294	219	230	193	172
	Charles Sturt University	5194	6485	6334	6520	7288	6834	7611
	Macquarie University	3148	4613	4056	3619	4088	4294	3899
	National Institute of Dramatic Art	52	54	54	55	52	54	59
	Southern Cross University	2426	2782	3475	3262	3077	2938	3228
	The University of New England	3419	3565	3567	3434	4005	4813	4481
	The University of New South Wales	4887	4735	4798	5005	4927	5164	6070
	The University of Newcastle	4225	5342	4983	4951	4371	4541	4912
	The University of Sydney	6667	6443	8292	8366	8326	8879	8359
	University of Technology, Sydney	4500	4374	4695	5071	4306	4243	4755
	University of Western Sydney	6242	7588	8321	8038	8402	8470	7995
University of Wollongong	2480	2601	2655	2752	2779	2919	2995	
	<i>State Sub-total</i>	<i>43518</i>	<i>48870</i>	<i>51539</i>	<i>51292</i>	<i>51851</i>	<i>53342</i>	<i>54536</i>
Victoria	Deakin University	6125	6623	8558	6870	7398	6027	7071
	La Trobe University	5840	5775	6163	6011	5452	5505	5736
	Monash University	8175	9099	8674	8424	8391	7954	9446
	Royal Melbourne Institute of Technology	5094	5037	5048	5077	5186	5407	5130
	Swinburne University of Technology	2002	2069	2407	2619	2784	2918	2177
	The University of Melbourne	6718	5929	6921	6788	5977	5739	6215
	University of Ballarat	1248	1367	1454	1438	1341	1370	1280
	Victoria University of Technology	3879	4229	4381	4567	5169	5194	4446
		<i>State Sub-total</i>	<i>39115</i>	<i>40157</i>	<i>43630</i>	<i>41817</i>	<i>41726</i>	<i>40160</i>
Qld	Central Queensland University	2652	2655	3497	3529	3519	3621	3714
	Griffith University	5680	5742	6468	6411	6237	7426	7266
	James Cook University	2182	2521	2562	2698	3525	3529	3771
	Queensland University of Technology	7226	7718	7987	8439	8074	7336	8593
	The University of Queensland	6238	6429	7445	7727	7923	8081	8476
	University of Southern Queensland	3196	3792	4172	3836	3943	3986	3921
	University of the Sunshine Coast	0	0	0	0	0	1050	1172
		<i>State Sub-total</i>	<i>27174</i>	<i>28857</i>	<i>32131</i>	<i>32640</i>	<i>33221</i>	<i>35029</i>
WA	Curtin University of Technology	4226	4411	4498	4868	4933	4676	5300
	Edith Cowan University	5110	5712	5642	5614	5321	5546	5031
	Murdoch University	2272	2261	2236	2935	2912	3135	2773
	The University of Notre Dame Australia	0	0	0	0	0	36	208
	The University of Western Australia	2895	2894	2984	2938	3000	3201	3373
		<i>State Sub-total</i>	<i>14503</i>	<i>15278</i>	<i>15360</i>	<i>16355</i>	<i>16166</i>	<i>16594</i>
SA	The Flinders University of South Australia	2811	3479	3255	3313	2858	3049	3186
	The University of Adelaide	3049	3337	3475	3513	3114	3008	3677
	University of South Australia	6351	6542	6540	6138	6360	7025	6007
		<i>State Sub-total</i>	<i>12211</i>	<i>13358</i>	<i>13270</i>	<i>12964</i>	<i>12332</i>	<i>13082</i>
Tasmania	University of Tasmania	3154	3656	3603	3566	3550	3674	3535
		<i>State Sub-total</i>	<i>3154</i>	<i>3656</i>	<i>3603</i>	<i>3566</i>	<i>3550</i>	<i>3674</i>
NT	Batchelor	4	121	165	221	155	300	253
	Northern Territory University	1232	1596	1601	1352	1587	1524	1455
		<i>State Sub-total</i>	<i>1236</i>	<i>1717</i>	<i>1766</i>	<i>1573</i>	<i>1742</i>	<i>1824</i>
ACT	Australian Defence Force Academy	383	400	411	457	425	355	288
	The Australian National University	2463	2568	2397	2308	1742	1795	1843
	University of Canberra	2082	2327	2515	2600	2773	2239	2171
		<i>State Sub-total</i>	<i>4928</i>	<i>5295</i>	<i>5323</i>	<i>5365</i>	<i>4940</i>	<i>4389</i>
Multi-State	Australian Catholic University	2479	2889	2487	2988	3138	2607	2631
		<i>State Sub-total</i>	<i>2479</i>	<i>2889</i>	<i>2487</i>	<i>2988</i>	<i>3138</i>	<i>2607</i>
<b>Total</b>		<b>148318</b>	<b>160077</b>	<b>169109</b>	<b>168560</b>	<b>168666</b>	<b>170701</b>	<b>174714</b>

**Table 5a: Crude student attrition rates for domestic commencing undergraduate 'new to higher education' students by State and Institution, 1994-2002 (%)**

State	Institution	1994	1995	1996	1997	1998	1999	2000	2002
NSW	Australian Film, Television and Radio School	0.0	0.0	0.0	0.0	0.0	0.0	0.0	0.0
	Avondale College	20.7	16.9	24.7	23.8	29.0	21.4	35.0	29.5
	Charles Sturt University	24.5	25.4	26.2	27.1	25.7	23.2	19.4	21.5
	Macquarie University	21.4	25.4	23.9	19.5	19.7	20.9	18.1	15.5
	National Institute of Dramatic Art	3.7	14.8	8.3	14.3	14.8	7.1	17.2	4.2
	Southern Cross University	33.5	29.6	33.8	34.3	32.9	34.9	27.3	32.9
	The University of New England	29.2	27.5	26.9	28.0	28.5	30.2	28.0	29.2
	The University of New South Wales	13.2	12.6	11.6	10.8	11.5	11.8	13.2	12.1
	The University of Newcastle	20.3	22.0	20.9	19.8	17.9	18.6	18.3	17.7
	The University of Sydney	15.6	14.9	17.1	15.5	16.1	17.9	18.1	14.3
	University of Technology, Sydney	15.0	14.0	14.8	15.3	14.4	14.9	13.0	12.7
	University of Western Sydney	28.7	25.2	23.6	23.0	23.2	26.9	24.3	20.4
University of Wollongong	13.3	16.4	14.7	16.4	14.9	16.8	14.9	15.3	
	<i>State Sub-total</i>	20.9	20.9	20.8	20.4	20.0	21.1	19.1	18.0
Victoria	Deakin University	25.4	23.7	30.0	24.7	28.4	28.8	27.3	21.0
	La Trobe University	29.4	46.3	28.3	26.8	25.7	26.6	26.7	24.2
	Monash University	18.5	17.5	16.3	17.4	17.4	15.3	15.7	14.2
	Royal Melbourne Institute of Technology	18.8	17.4	17.2	16.6	18.4	18.9	18.6	18.0
	Swinburne University of Technology	24.4	22.3	20.9	22.8	19.7	21.7	23.6	21.2
	The University of Melbourne	12.8	16.5	22.8	11.4	11.9	12.0	11.4	10.3
	University of Ballarat	27.2	26.0	25.2	24.5	22.1	26.0	25.5	21.3
	Victoria University of Technology	27.6	26.2	27.1	24.3	26.8	28.2	27.4	30.5
	<i>State Sub-total</i>	21.8	24.0	23.6	20.3	21.4	21.6	21.4	18.6
Qld	Central Queensland University	36.2	32.4	30.7	32.4	34.3	30.0	27.5	29.9
	Griffith University	25.1	23.3	22.7	24.9	27.0	28.7	28.9	27.5
	James Cook University	26.7	26.8	27.5	28.7	31.6	35.0	29.4	33.3
	Queensland University of Technology	21.1	21.2	19.4	22.1	33.4	21.5	19.9	21.5
	The University of Queensland	20.5	21.7	23.1	22.1	19.2	19.5	18.7	17.6
	University of Southern Queensland	29.7	27.9	31.8	31.3	33.9	31.1	34.3	29.1
	University of the Sunshine Coast	na	na	na	na	na	39.3	33.9	41.9
	<i>State Sub-total</i>	24.8	24.2	24.5	25.5	28.6	26.8	25.7	25.6
WA	Curtin University of Technology	18.1	17.6	16.9	17.4	19.0	18.6	21.1	21.5
	Edith Cowan University	30.6	29.5	29.5	31.2	29.8	29.6	29.8	26.3
	Murdoch University	24.7	23.3	21.7	22.6	23.1	21.3	26.6	21.1
	The University of Notre Dame Australia	na	na	na	na	na	na	28.1	22.6
	The University of Western Australia	17.6	17.4	18.2	17.6	18.2	17.8	15.9	13.0
	<i>State Sub-total</i>	23.0	22.5	22.2	22.7	22.8	22.6	23.6	21.3
SA	The Flinders University of South Australia	21.4	23.0	24.0	21.9	22.2	24.0	24.0	25.4
	The University of Adelaide	18.2	18.3	19.8	20.9	18.3	17.7	18.7	19.6
	University of South Australia	20.9	18.3	21.8	20.9	23.0	23.6	22.4	22.5
		<i>State Sub-total</i>	20.3	19.6	21.8	21.2	21.6	22.3	21.9
Tasmania	University of Tasmania	21.4	20.5	22.5	21.7	20.6	21.2	18.7	20.3
		<i>State Sub-total</i>	21.4	20.5	22.5	21.7	20.6	21.2	18.7
NT	Batchelor	na	32.7	37.5	40.9	33.5	64.7	0.0	47.2
	Northern Territory University	32.4	36.8	36.7	43.6	39.9	38.3	45.1	39.7
		<i>State Sub-total</i>	32.4	36.3	36.8	43.0	38.1	47.3	45.1
ACT	Australian Defence Force Academy	9.3	12.0	7.4	8.8	6.7	12.1	7.3	3.2
	The Australian National University	16.3	16.2	14.7	13.4	16.0	17.3	15.4	16.9
	University of Canberra	20.8	21.8	21.7	21.5	22.7	22.9	21.1	18.6
		<i>State Sub-total</i>	17.3	17.9	17.1	16.8	18.6	19.5	17.6
Multi-State	Australian Catholic University	20.8	22.0	25.9	23.0	24.9	23.0	21.0	21.7
		<i>State Sub-total</i>	20.8	22.0	25.9	23.0	24.9	23.0	21.0
<b>Total</b>		<b>21.9</b>	<b>22.3</b>	<b>22.5</b>	<b>21.7</b>	<b>22.6</b>	<b>22.7</b>	<b>21.7</b>	<b>20.6</b>

Table 5b: Number of domestic commencing undergraduate 'new to higher education' students by State and Institution, 1994-2002

State	Institution	1994	1995	1996	1997	1998	1999	2000	2002
NSW	Australian Film, Television and Radio School	12	20	3	0	0	0	0	0
	Avondale College	174	172	198	168	183	145	143	149
	Charles Sturt University	3309	3894	3987	3988	4324	3610	4450	3215
	Macquarie University	2333	3238	2616	2642	2814	2892	2573	2023
	National Institute of Dramatic Art	27	27	24	28	27	28	29	24
	Southern Cross University	1757	1929	2172	2278	1890	1896	1403	1789
	The University of New England	2052	1942	2007	1863	2044	2280	2125	1968
	The University of New South Wales	3980	3686	3567	3550	3421	3680	4147	3879
	The University of Newcastle	2961	3224	3610	3665	3206	3269	3235	3530
	The University of Sydney	4575	4522	6337	5338	5524	6271	6407	5670
	University of Technology, Sydney	3296	3279	3201	3429	2979	3024	3437	3182
	University of Western Sydney	4622	5560	6183	5924	5598	6060	6096	5606
University of Wollongong	1717	2009	2026	1949	1886	2050	1863	2536	
	<i>State Sub-total</i>	<i>30815</i>	<i>33502</i>	<i>35931</i>	<i>34822</i>	<i>33896</i>	<i>35205</i>	<i>35908</i>	<i>33571</i>
Victoria	Deakin University	4669	4979	6202	5067	5569	4234	4937	4068
	La Trobe University	4333	4277	4644	4464	3947	3875	3879	4400
	Monash University	5682	6465	6032	5772	5555	5348	5538	4985
	Royal Melbourne Institute of Technology	3683	3696	3638	3547	3554	3638	3263	2980
	Swinburne University of Technology	1521	1525	1954	2211	2035	2190	1686	1546
	The University of Melbourne	5063	4617	5266	5346	4425	4255	4305	4442
	University of Ballarat	1028	1074	1143	1124	1083	1129	1109	1080
	Victoria University of Technology	2939	3437	3563	3746	4167	4305	4226	1523
	<i>State Sub-total</i>	<i>28952</i>	<i>30096</i>	<i>32466</i>	<i>31277</i>	<i>30335</i>	<i>28974</i>	<i>28943</i>	<i>25024</i>
Qld	Central Queensland University	1865	1791	2387	2435	2203	2253	2497	2031
	Griffith University	3847	3649	4049	4066	4019	4466	4708	4351
	James Cook University	1526	1745	1830	1883	2369	2536	2718	2315
	Queensland University of Technology	4312	4568	4759	4914	4824	3871	4477	5269
	The University of Queensland	4254	4433	5243	5245	5242	5112	4775	4586
	University of Southern Queensland	1906	2219	2587	2547	2511	2326	2574	2127
	University of the Sunshine Coast	0	0	0	0	0	820	834	968
	<i>State Sub-total</i>	<i>17710</i>	<i>18405</i>	<i>20855</i>	<i>21090</i>	<i>21168</i>	<i>21384</i>	<i>22583</i>	<i>21647</i>
WA	Curtin University of Technology	3011	3217	3196	3292	3416	3268	3149	3474
	Edith Cowan University	3120	3671	3563	3415	3228	3655	3276	3146
	Murdoch University	1318	1242	1341	1841	1659	1752	1521	1774
	The University of Notre Dame Australia	0	0	0	0	0	0	64	486
	The University of Western Australia	2125	2137	2200	2226	2184	2259	2223	2078
		<i>State Sub-total</i>	<i>9574</i>	<i>10267</i>	<i>10300</i>	<i>10774</i>	<i>10487</i>	<i>10934</i>	<i>10233</i>
SA	The Flinders University of South Australia	1843	2424	2180	2134	1818	1980	1973	2373
	The University of Adelaide	2227	2514	2528	2273	2079	2164	2031	2568
	University of South Australia	4091	4171	4229	3910	3893	4866	4018	3897
		<i>State Sub-total</i>	<i>8161</i>	<i>9109</i>	<i>8937</i>	<i>8317</i>	<i>7790</i>	<i>9010</i>	<i>8022</i>
Tasmania	University of Tasmania	2243	2559	2581	2252	2349	2440	2307	2738
		<i>State Sub-total</i>	<i>2243</i>	<i>2559</i>	<i>2581</i>	<i>2252</i>	<i>2349</i>	<i>2440</i>	<i>2307</i>
NT	Batchelor	0	110	136	198	155	272	0	246
	Northern Territory University	734	798	663	729	404	530	636	614
		<i>State Sub-total</i>	<i>734</i>	<i>908</i>	<i>799</i>	<i>927</i>	<i>559</i>	<i>802</i>	<i>636</i>
ACT	Australian Defence Force Academy	333	351	351	351	342	297	178	158
	The Australian National University	1953	2044	1829	1742	1236	1276	1326	1416
	University of Canberra	1293	1443	1685	1843	1803	1471	1401	1329
		<i>State Sub-total</i>	<i>3579</i>	<i>3838</i>	<i>3865</i>	<i>3936</i>	<i>3381</i>	<i>3044</i>	<i>2905</i>
Multi-State	Australian Catholic University	1732	1341	1774	2170	2142	1813	1635	2124
		<i>State Sub-total</i>	<i>1732</i>	<i>1341</i>	<i>1774</i>	<i>2170</i>	<i>2142</i>	<i>1813</i>	<i>1635</i>
<b>Total</b>		<b>103500</b>	<b>110025</b>	<b>117508</b>	<b>115565</b>	<b>112107</b>	<b>113606</b>	<b>113172</b>	<b>108663</b>

**Table 6a: Crude student attrition rates for domestic commencing undergraduate 'NOT new to higher education' students by State and Institution, 1994-2002 (%)**

State	Institution	1994	1995	1996	1997	1998	1999	2000	2002
NSW	Australian Film, Television and Radio School	6.7	12.5	0.0	0.0	0.0	0.0	0.0	0.0
	Avondale College	20.0	22.5	14.6	21.6	36.2	29.2	37.1	22.6
	Charles Sturt University	26.6	27.8	28.0	29.6	26.4	21.9	23.6	27.0
	Macquarie University	23.3	26.0	23.5	23.5	23.1	20.4	19.9	22.5
	National Institute of Dramatic Art	12.0	22.2	6.7	11.1	8.0	3.8	14.8	0.0
	Southern Cross University	31.8	32.7	34.7	35.8	34.6	37.2	29.4	28.3
	The University of New England	25.9	30.1	29.9	25.2	28.3	30.2	31.5	31.5
	The University of New South Wales	17.4	14.5	17.8	16.6	18.3	16.5	20.1	17.7
	The University of Newcastle	18.2	20.2	21.7	20.5	18.9	18.3	18.4	17.8
	The University of Sydney	17.7	16.6	17.7	17.6	18.3	16.8	15.7	15.6
	University of Technology, Sydney	18.1	15.8	18.1	17.8	19.3	18.0	16.1	16.1
	University of Western Sydney	40.9	24.9	26.2	24.7	25.6	28.6	26.9	25.0
	University of Wollongong	18.8	18.6	19.6	19.9	17.4	19.1	18.1	17.2
<i>State Sub-total</i>		24.6	23.3	23.7	22.8	23.3	22.7	22.3	22.8
Victoria	Deakin University	27.5	25.1	38.6	34.0	30.9	29.1	26.3	24.5
	La Trobe University	20.6	38.5	30.5	22.5	22.4	22.3	22.5	20.1
	Monash University	22.6	22.8	23.0	24.7	22.1	22.3	22.8	20.4
	Royal Melbourne Institute of Technology	18.7	17.9	15.6	19.7	17.2	25.6	17.1	20.3
	Swinburne University of Technology	23.8	25.6	21.6	24.8	22.2	23.1	23.8	23.1
	The University of Melbourne	17.2	21.1	31.7	20.3	15.1	12.9	12.0	12.3
	University of Ballarat	19.5	20.8	19.0	26.4	21.3	23.2	21.4	21.8
	Victoria University of Technology	24.2	25.0	20.0	19.7	24.6	26.3	28.1	23.4
	<i>State Sub-total</i>		21.9	25.1	27.4	24.4	22.2	23.0	21.9
Qld	Central Queensland University	30.0	25.6	32.3	32.4	31.5	28.1	21.4	24.2
	Griffith University	22.4	22.8	21.9	23.9	24.0	23.4	22.1	23.2
	James Cook University	27.1	26.4	26.4	32.4	31.2	33.5	32.1	35.6
	Queensland University of Technology	22.5	23.9	19.4	20.9	24.9	20.8	21.6	22.3
	The University of Queensland	22.0	21.2	20.5	20.6	18.8	20.5	19.5	19.6
	University of Southern Queensland	26.0	27.4	29.1	30.1	30.7	31.2	35.0	27.6
	University of the Sunshine Coast	0.0	0.0	0.0	0.0	0.0	34.3	26.3	41.2
	<i>State Sub-total</i>		23.8	24.0	23.1	24.3	25.3	24.3	23.6
WA	Curtin University of Technology	23.7	25.5	22.1	23.7	22.5	22.4	25.6	22.2
	Edith Cowan University	33.6	32.8	33.2	33.7	31.2	33.6	30.6	29.3
	Murdoch University	21.8	24.0	19.8	24.6	26.5	21.3	20.7	25.6
	The University of Notre Dame Australia	0.0	0.0	0.0	0.0	0.0	0.0	43.8	34.8
	The University of Western Australia	16.0	16.0	17.3	17.3	16.5	17.6	17.6	12.7
	<i>State Sub-total</i>		26.3	26.9	25.5	27.0	25.7	25.1	24.8
SA	The Flinders University of South Australia	17.7	21.2	19.5	19.8	18.5	18.7	17.0	17.6
	The University of Adelaide	19.2	21.3	20.2	21.1	17.1	22.3	20.8	16.6
	University of South Australia	22.4	20.9	21.5	23.8	25.1	23.7	24.6	24.6
	<i>State Sub-total</i>		20.5	21.0	20.7	22.0	21.6	22.0	21.4
Tasmania	University of Tasmania	24.4	22.5	24.9	23.1	21.8	23.0	21.7	19.2
	<i>State Sub-total</i>		24.4	22.5	24.9	23.1	21.8	23.0	21.7
NT	Batchelor	0.0	36.4	24.1	27.3	0.0	44.4	75.0	37.5
	Northern Territory University	32.6	37.8	36.0	35.7	35.9	25.0	38.7	36.3
	<i>State Sub-total</i>		32.6	37.8	35.5	35.3	35.9	38.5	38.9
ACT	Australian Defence Force Academy	4.0	0.0	13.3	6.6	7.2	10.3	11.8	6.8
	The Australian National University	24.7	26.8	26.0	24.3	22.9	27.0	24.2	20.7
	University of Canberra	20.1	22.4	23.9	29.9	21.7	26.7	25.0	24.1
	<i>State Sub-total</i>		21.4	23.1	24.2	22.1	21.2	26.0	24.4
Multi-State	Australian Catholic University	13.5	19.7	18.8	19.7	23.6	17.3	20.6	20.1
	<i>State Sub-total</i>		13.5	19.7	18.8	19.7	23.6	17.3	20.6
<b>Total</b>		<b>23.4</b>	<b>24.1</b>	<b>24.5</b>	<b>23.9</b>	<b>23.7</b>	<b>23.4</b>	<b>22.9</b>	<b>22.5</b>

Table 6b: Number of domestic commencing undergraduate 'NOT new to higher education students by State and Institution, 1994-2002

State	Institution	1994	1995	1996	1997	1998	1999	2000	2002
<b>NSW</b>	Australian Film, Television and Radio School	30	24	11	0	0	0	0	0
	Avondale College	60	71	96	51	47	48	35	31
	Charles Sturt University	1636	2191	2299	2253	2959	3219	3631	2700
	Macquarie University	815	1375	1440	977	1274	1402	1353	901
	National Institute of Dramatic Art	25	27	30	27	25	26	27	29
	Southern Cross University	669	853	1046	970	1096	956	296	769
	The University of New England	1367	1527	1474	1549	1951	2507	2447	2270
	The University of New South Wales	906	1048	1231	1455	1506	1484	1546	1079
	The University of Newcastle	1245	1867	1372	1286	1154	1271	1361	1260
	The University of Sydney	1236	1359	1933	2433	2802	2608	2382	2324
	University of Technology, Sydney	1180	1072	1487	1632	1322	1179	1230	890
	University of Western Sydney	1558	1785	1839	1742	2489	2016	1661	1311
University of Wollongong	480	592	581	738	765	592	635	419	
	<i>State Sub-total</i>	<i>11207</i>	<i>13791</i>	<i>14839</i>	<i>15113</i>	<i>17390</i>	<i>17308</i>	<i>16604</i>	<i>13983</i>
<b>Victoria</b>	Deakin University	1419	1636	2355	1801	1824	1793	2231	1861
	La Trobe University	1506	1496	1444	1433	1458	1610	1551	1579
	Monash University	2350	2634	2642	2635	2825	2598	3279	2496
	Royal Melbourne Institute of Technology	986	1096	1252	1332	1410	1483	1389	961
	Swinburne University of Technology	374	442	453	408	749	632	564	402
	The University of Melbourne	1509	1225	1526	1411	1508	1447	1437	1437
	University of Ballarat	220	293	311	314	258	241	215	170
	Victoria University of Technology	939	792	818	821	1002	889	908	947
	<i>State Sub-total</i>	<i>9303</i>	<i>9617</i>	<i>10801</i>	<i>10157</i>	<i>11036</i>	<i>10693</i>	<i>11575</i>	<i>9853</i>
<b>Qld</b>	Central Queensland University	787	864	1110	1094	1316	1368	1408	1168
	Griffith University	1671	2078	2397	2339	2190	2898	2660	2293
	James Cook University	656	776	732	815	1156	993	995	1057
	Queensland University of Technology	2782	3002	3145	3514	3243	3461	3816	3703
	The University of Queensland	1977	1996	2202	2482	2681	2969	2783	2713
	University of Southern Queensland	1225	1487	1315	1188	1340	1463	1483	1245
	University of the Sunshine Coast	0	0	0	0	0	230	217	165
	<i>State Sub-total</i>	<i>9098</i>	<i>10203</i>	<i>10901</i>	<i>11432</i>	<i>11926</i>	<i>13382</i>	<i>13362</i>	<i>12344</i>
<b>WA</b>	Curtin University of Technology	1215	1194	1302	1576	1517	1408	1577	1562
	Edith Cowan University	1977	2041	2078	2199	2093	1889	1841	1354
	Murdoch University	729	778	891	1091	1242	1368	1228	855
	The University of Notre Dame Australia	0	0	0	0	0	0	16	92
	The University of Western Australia	770	757	784	712	816	942	965	840
		<i>State Sub-total</i>	<i>4691</i>	<i>4770</i>	<i>5055</i>	<i>5578</i>	<i>5668</i>	<i>5607</i>	<i>5627</i>
<b>SA</b>	The Flinders University of South Australia	968	1041	1013	1179	1040	1069	1154	1219
	The University of Adelaide	822	823	947	1237	1035	844	862	837
	University of South Australia	2125	2204	2202	2111	2263	1920	1774	1785
		<i>State Sub-total</i>	<i>3915</i>	<i>4068</i>	<i>4162</i>	<i>4527</i>	<i>4338</i>	<i>3833</i>	<i>3790</i>
<b>Tasmania</b>	University of Tasmania	890	1033	1014	1314	1201	1224	1135	1288
		<i>State Sub-total</i>	<i>890</i>	<i>1033</i>	<i>1014</i>	<i>1314</i>	<i>1201</i>	<i>1224</i>	<i>1135</i>
<b>NT</b>	Batchelor	0	11	29	22	0	9	4	72
	Northern Territory University	473	629	708	493	752	4	745	490
		<i>State Sub-total</i>	<i>473</i>	<i>640</i>	<i>737</i>	<i>515</i>	<i>752</i>	<i>13</i>	<i>749</i>
<b>ACT</b>	Australian Defence Force Academy	50	49	60	106	83	58	34	118
	The Australian National University	474	448	492	478	424	385	392	672
	University of Canberra	528	842	804	735	964	768	715	619
		<i>State Sub-total</i>	<i>1052</i>	<i>1339</i>	<i>1356</i>	<i>1319</i>	<i>1471</i>	<i>1211</i>	<i>1141</i>
<b>Multi-State</b>	Australian Catholic University	724	834	682	801	712	762	738	921
		<i>State Sub-total</i>	<i>724</i>	<i>834</i>	<i>682</i>	<i>801</i>	<i>712</i>	<i>762</i>	<i>738</i>
<b>Total</b>		<b>41353</b>	<b>46295</b>	<b>49547</b>	<b>50756</b>	<b>54494</b>	<b>54033</b>	<b>54721</b>	<b>48904</b>

**Table 7a: Crude student attrition rates in second year after commencement, for domestic commencing undergraduate 'new to higher education' students by State and Institution, 1994-2001 (%)**

State	Institution	1994	1995	1996	1997	1998	1999	2001
NSW	Australian Film, Television and Radio School	0.0	0.0	0.0	0.0	0.0	0.0	0.0
	Avondale College	6.3	9.9	14.1	11.3	13.1	15.9	9.7
	Charles Sturt University	11.5	12.0	12.3	12.4	12.0	10.3	11.9
	Macquarie University	11.7	10.3	8.8	10.4	9.8	8.9	8.2
	National Institute of Dramatic Art	7.4	11.1	0.0	10.7	3.7	7.1	0.0
	Southern Cross University	10.6	11.8	13.4	13.7	13.7	11.9	13.9
	The University of New England	12.1	12.4	11.2	12.9	15.5	13.9	14.7
	The University of New South Wales	8.3	7.8	7.6	7.4	7.1	7.1	5.7
	The University of Newcastle	9.6	9.5	9.6	9.6	9.7	10.5	9.4
	The University of Sydney	6.7	7.1	8.0	7.8	8.6	8.4	6.9
	University of Technology, Sydney	7.4	6.5	8.3	7.9	7.0	6.9	7.2
	University of Western Sydney	9.9	10.2	9.8	10.4	12.8	11.5	8.3
	University of Wollongong	9.2	7.7	8.7	8.3	8.9	9.3	7.3
	<i>State Sub-total</i>	9.3	9.4	9.6	9.8	10.4	9.7	9.0
Victoria	Deakin University	10.3	11.5	11.1	11.4	12.8	12.6	11.6
	La Trobe University	24.7	8.3	11.8	13.0	12.7	12.4	10.5
	Monash University	9.2	9.8	10.9	10.7	9.2	9.7	9.1
	Royal Melbourne Institute of Technology	9.7	9.4	10.7	9.4	10.1	9.6	9.8
	Swinburne University of Technology	12.5	10.5	11.4	11.3	11.6	13.4	11.2
	The University of Melbourne	10.5	13.8	6.6	7.5	8.3	7.7	6.7
	University of Ballarat	11.8	11.1	11.5	11.5	13.3	11.5	10.7
	Victoria University of Technology	11.1	10.8	12.8	13.2	14.5	13.6	13.1
	<i>State Sub-total</i>	12.4	10.6	10.6	10.8	11.3	11.1	10.0
Qld	Central Queensland University	12.0	13.1	12.8	14.3	11.7	11.6	14.6
	Griffith University	11.2	10.8	12.3	14.0	12.0	15.0	12.7
	James Cook University	12.5	13.6	12.5	13.8	14.6	14.0	12.9
	Queensland University of Technology	10.3	9.5	12.0	17.9	9.1	11.0	9.6
	The University of Queensland	8.5	8.9	9.4	8.8	10.9	9.6	8.5
	University of Southern Queensland	13.1	16.8	15.7	14.3	14.0	16.5	14.6
	University of the Sunshine Coast	0.0	0.0	0.0	0.0	0.0	15.1	17.6
	<i>State Sub-total</i>	10.7	11.2	12.0	13.7	11.6	12.7	11.5
WA	Curtin University of Technology	11.3	9.8	9.8	9.6	11.5	11.8	9.2
	Edith Cowan University	13.5	12.7	12.2	14.0	13.6	13.9	12.6
	Murdoch University	12.9	10.5	11.6	13.6	10.7	13.8	9.8
	The University of Notre Dame Australia	0.0	0.0	0.0	0.0	0.0	0.0	13.7
	The University of Western Australia	8.4	8.6	10.3	8.9	9.2	8.8	8.3
		<i>State Sub-total</i>	11.6	10.7	11.0	11.5	11.5	12.2
SA	The Flinders University of South Australia	10.5	11.3	12.0	11.4	11.4	10.8	9.9
	The University of Adelaide	7.9	8.0	9.1	9.3	8.8	8.9	8.7
	University of South Australia	10.0	10.8	12.2	13.6	11.7	13.4	10.9
		<i>State Sub-total</i>	9.5	10.2	11.3	11.9	10.8	11.8
Tasmania	University of Tasmania	10.3	10.7	11.1	10.7	10.6	10.5	9.8
		<i>State Sub-total</i>	10.3	10.7	11.1	10.7	10.6	10.5
NT	Batchelor	0.0	22.7	11.8	19.7	25.2	13.6	19.5
	Northern Territory University	16.2	13.3	20.5	16.7	14.6	14.3	16.2
		<i>State Sub-total</i>	16.2	14.4	19.0	17.4	17.5	14.1
ACT	Australian Defence Force Academy	7.5	5.4	10.0	10.0	13.5	11.8	4.3
	The Australian National University	11.5	10.1	9.5	9.2	12.1	10.7	9.2
	University of Canberra	9.7	10.9	77.4	0.0	10.7	11.3	10.5
		<i>State Sub-total</i>	10.5	10.0	39.2	5.0	11.5	11.1
Multi-State	Australian Catholic University	8.4	7.8	7.2	9.4	8.6	7.7	7.5
		<i>State Sub-total</i>	8.4	7.8	7.2	9.4	8.6	7.7
<b>Total</b>		<b>10.8</b>	<b>10.3</b>	<b>11.6</b>	<b>11.0</b>	<b>11.0</b>	<b>11.1</b>	<b>10.0</b>

Table 7b: Number of domestic commencing undergraduate 'new to higher education' students by State and Institution, 1994-2001

State	Institution	1994	1995	1996	1997	1998	1999	2001
NSW	Australian Film, Television and Radio School	12	20	3	0	0	0	0
	Avondale College	174	172	198	168	183	145	134
	Charles Sturt University	3309	3894	3987	3988	4324	3610	3935
	Macquarie University	2333	3238	2616	2642	2814	2892	2475
	National Institute of Dramatic Art	27	27	24	28	27	28	33
	Southern Cross University	1757	1929	2172	2278	1890	1896	2164
	The University of New England	2052	1942	2007	1863	2044	2280	1962
	The University of New South Wales	3980	3686	3567	3550	3421	3680	1156
	The University of Newcastle	2961	3224	3610	3665	3206	3269	3477
	The University of Sydney	4575	4522	6337	5338	5524	6271	6033
	University of Technology, Sydney	3296	3279	3201	3429	2979	3024	3610
	University of Western Sydney	4622	5560	6183	5924	5598	6060	6187
University of Wollongong	1717	2009	2026	1949	1886	2050	2142	
	<i>State Sub-total</i>	<i>30815</i>	<i>33502</i>	<i>35931</i>	<i>34822</i>	<i>33896</i>	<i>35205</i>	<i>33308</i>
Victoria	Deakin University	4669	4979	6202	5067	5569	4234	4774
	La Trobe University	4333	4277	4644	4464	3947	3875	4177
	Monash University	5682	6465	6032	5772	5555	5348	6041
	Royal Melbourne Institute of Technology	3683	3696	3638	3547	3554	3638	3392
	Swinburne University of Technology	1521	1525	1954	2211	2035	2190	1290
	The University of Melbourne	5063	4617	5266	5346	4425	4255	4662
	University of Ballarat	1028	1074	1143	1124	1083	1129	1107
	Victoria University of Technology	2939	3437	3563	3746	4167	4305	3575
	<i>State Sub-total</i>	<i>28952</i>	<i>30096</i>	<i>32466</i>	<i>31277</i>	<i>30335</i>	<i>28974</i>	<i>29018</i>
Qld	Central Queensland University	1865	1791	2387	2435	2203	2253	2051
	Griffith University	3847	3649	4049	4066	4019	4466	4389
	James Cook University	1526	1745	1830	1883	2369	2536	3018
	Queensland University of Technology	4312	4568	4759	4914	4824	3871	4883
	The University of Queensland	4254	4433	5243	5245	5242	5112	5149
	University of Southern Queensland	1906	2219	2587	2547	2511	2326	2344
	University of the Sunshine Coast	0	0	0	0	0	820	74
	<i>State Sub-total</i>	<i>17710</i>	<i>18405</i>	<i>20855</i>	<i>21090</i>	<i>21168</i>	<i>21384</i>	<i>21908</i>
WA	Curtin University of Technology	3011	3217	3196	3292	3416	3268	3276
	Edith Cowan University	3120	3671	3563	3415	3228	3655	3315
	Murdoch University	1318	1242	1341	1841	1659	1752	1526
	The University of Notre Dame Australia	0	0	0	0	0	0	183
	The University of Western Australia	2125	2137	2200	2226	2184	2259	2225
	<i>State Sub-total</i>	<i>9574</i>	<i>10267</i>	<i>10300</i>	<i>10774</i>	<i>10487</i>	<i>10934</i>	<i>10525</i>
SA	The Flinders University of South Australia	1843	2424	2180	2134	1818	1980	2129
	The University of Adelaide	2227	2514	2528	2273	2079	2164	2615
	University of South Australia	4091	4171	4229	3910	3893	4866	4125
		<i>State Sub-total</i>	<i>8161</i>	<i>9109</i>	<i>8937</i>	<i>8317</i>	<i>7790</i>	<i>9010</i>
Tasmania	University of Tasmania	2243	2559	2581	2252	2349	2440	2389
		<i>State Sub-total</i>	<i>2243</i>	<i>2559</i>	<i>2581</i>	<i>2252</i>	<i>2349</i>	<i>2440</i>
NT	Batchelor	0	110	136	198	155	272	251
	Northern Territory University	734	798	663	729	404	530	592
		<i>State Sub-total</i>	<i>734</i>	<i>908</i>	<i>799</i>	<i>927</i>	<i>559</i>	<i>802</i>
ACT	Australian Defence Force Academy	333	351	351	351	342	297	23
	The Australian National University	1953	2044	1829	1742	1236	1276	1312
	University of Canberra	1293	1443	1685	1843	1803	1471	1398
		<i>State Sub-total</i>	<i>3579</i>	<i>3838</i>	<i>3865</i>	<i>3936</i>	<i>3381</i>	<i>3044</i>
Multi-State	Australian Catholic University	1732	1341	1774	2170	2142	1813	1785
		<i>State Sub-total</i>	<i>1732</i>	<i>1341</i>	<i>1774</i>	<i>2170</i>	<i>2142</i>	<i>1813</i>
<b>Total</b>		<b>103500</b>	<b>110025</b>	<b>117508</b>	<b>115565</b>	<b>112107</b>	<b>113606</b>	<b>111378</b>

**Table 8a: Crude student attrition rates in second year after commencement, for domestic commencing undergraduate NOT new to higher education' students by State and Institution, 1994-2001 (%)**

State	Institution	1994	1995	1996	1997	1998	1999	2001
NSW	Australian Film, Television and Radio School	6.7	0.0	0.0	0.0	0.0	0.0	0.0
	Avondale College	6.7	5.6	32.3	3.9	12.8	18.8	10.5
	Charles Sturt University	12.0	11.8	12.2	11.5	11.3	12.0	11.6
	Macquarie University	11.8	10.0	9.4	12.9	12.4	11.8	10.4
	National Institute of Dramatic Art	4.0	11.1	0.0	3.7	0.0	3.8	0.0
	Southern Cross University	11.7	12.7	14.7	13.9	13.4	15.8	15.2
	The University of New England	13.2	11.0	10.0	12.3	13.0	14.7	14.0
	The University of New South Wales	8.8	8.8	11.4	9.8	9.4	16.1	7.2
	The University of Newcastle	9.7	10.5	10.7	9.6	11.1	8.3	8.3
	The University of Sydney	9.1	7.9	8.0	8.9	8.5	8.7	7.8
	University of Technology, Sydney	9.8	8.9	8.1	8.3	7.9	8.9	12.7
	University of Western Sydney	6.8	10.0	10.8	11.4	12.9	13.5	13.0
	University of Wollongong	8.5	10.6	10.5	10.7	12.0	10.6	10.0
	<i>State Sub-total</i>	<i>10.1</i>	<i>10.2</i>	<i>10.6</i>	<i>10.6</i>	<i>11.1</i>	<i>12.1</i>	<i>11.0</i>
Victoria	Deakin University	10.4	13.0	11.0	11.6	12.7	12.1	11.0
	La Trobe University	15.9	7.2	7.8	10.5	11.2	11.1	9.0
	Monash University	10.1	12.7	13.4	12.4	11.2	10.6	10.0
	Royal Melbourne Institute of Technology	8.8	8.4	9.7	9.8	12.4	11.7	9.1
	Swinburne University of Technology	16.3	11.1	13.0	10.0	12.7	15.2	12.0
	The University of Melbourne	16.2	22.1	6.4	9.2	8.4	6.2	6.2
	University of Ballarat	9.1	7.2	7.4	9.2	10.9	9.5	10.4
	Victoria University of Technology	9.5	11.5	11.5	13.2	12.5	12.7	10.1
	<i>State Sub-total</i>	<i>12.1</i>	<i>12.3</i>	<i>10.4</i>	<i>11.1</i>	<i>11.4</i>	<i>10.9</i>	<i>9.6</i>
Qld	Central Queensland University	14.1	13.4	11.4	13.3	12.8	10.5	14.0
	Griffith University	10.0	9.4	11.4	12.2	11.9	12.5	11.1
	James Cook University	10.1	11.5	12.7	12.5	13.1	12.8	11.3
	Queensland University of Technology	9.7	9.8	12.6	12.9	10.9	9.5	10.5
	The University of Queensland	8.2	8.6	10.7	10.8	11.1	9.9	9.0
	University of Southern Queensland	12.1	14.8	16.7	15.5	16.7	16.7	14.1
	University of the Sunshine Coast	0.0	0.0	0.0	0.0	0.0	9.6	14.3
	<i>State Sub-total</i>	<i>10.2</i>	<i>10.7</i>	<i>12.3</i>	<i>12.6</i>	<i>12.2</i>	<i>11.4</i>	<i>11.2</i>
WA	Curtin University of Technology	10.7	10.0	11.1	10.0	14.2	13.5	11.3
	Edith Cowan University	12.0	12.1	12.4	13.8	12.6	12.3	12.4
	Murdoch University	10.4	9.4	10.9	10.3	9.7	10.2	11.5
	The University of Notre Dame Australia	0.0	0.0	0.0	0.0	0.0	0.0	0.0
	The University of Western Australia	7.7	8.7	8.3	8.1	6.9	8.9	5.5
	<i>State Sub-total</i>	<i>10.7</i>	<i>10.6</i>	<i>11.2</i>	<i>11.3</i>	<i>11.6</i>	<i>11.5</i>	<i>10.5</i>
SA	The Flinders University of South Australia	8.3	9.4	9.1	9.5	9.9	8.1	10.2
	The University of Adelaide	10.3	8.6	8.8	10.3	11.9	10.8	10.1
	University of South Australia	9.2	10.9	11.0	11.1	11.1	13.1	10.7
	<i>State Sub-total</i>	<i>9.2</i>	<i>10.1</i>	<i>10.0</i>	<i>10.5</i>	<i>11.0</i>	<i>11.2</i>	<i>10.4</i>
Tasmania	University of Tasmania	9.8	9.9	11.3	9.4	9.0	9.7	9.0
		<i>State Sub-total</i>	<i>9.8</i>	<i>9.9</i>	<i>11.3</i>	<i>9.4</i>	<i>9.0</i>	<i>9.7</i>
NT	Batchelor	0.0	9.1	3.4	18.2	0.0	33.3	50.0
	Northern Territory University	11.6	10.2	15.4	15.0	12.6	0.0	14.5
		<i>State Sub-total</i>	<i>11.6</i>	<i>10.2</i>	<i>14.9</i>	<i>15.1</i>	<i>12.6</i>	<i>23.1</i>
ACT	Australian Defence Force Academy	4.0	6.1	5.0	6.6	8.4	10.3	7.4
	The Australian National University	14.6	12.3	13.0	11.9	11.1	13.2	14.2
	University of Canberra	9.7	10.5	67.8	0.0	12.0	13.2	9.7
		<i>State Sub-total</i>	<i>11.6</i>	<i>10.9</i>	<i>45.1</i>	<i>4.9</i>	<i>11.6</i>	<i>13.0</i>
Multi-State	Australian Catholic University	6.8	6.4	5.9	10.4	9.4	7.9	8.1
		<i>State Sub-total</i>	<i>6.8</i>	<i>6.4</i>	<i>5.9</i>	<i>10.4</i>	<i>9.4</i>	<i>7.9</i>
<b>Total</b>		<b>10.6</b>	<b>10.7</b>	<b>11.9</b>	<b>11.1</b>	<b>11.4</b>	<b>11.5</b>	<b>10.6</b>

Table 8b: Number of domestic commencing undergraduate 'NOT new to higher education' students by State and Institution, 1994-2002

State	Institution	1994	1995	1996	1997	1998	1999	2001
NSW	Australian Film, Television and Radio School	30	24	11	0	0	0	0
	Avondale College	60	71	96	51	47	48	38
	Charles Sturt University	1636	2191	2299	2253	2959	3219	3676
	Macquarie University	815	1375	1440	977	1274	1402	1423
	National Institute of Dramatic Art	25	27	30	27	25	26	26
	Southern Cross University	669	853	1046	970	1096	956	796
	The University of New England	1367	1527	1474	1549	1951	2507	2477
	The University of New South Wales	906	1048	1231	1455	1506	1484	1575
	The University of Newcastle	1245	1867	1372	1286	1154	1271	1435
	The University of Sydney	1236	1359	1933	2433	2802	2608	2188
	University of Technology, Sydney	1180	1072	1487	1632	1322	1179	1126
	University of Western Sydney	1558	1785	1839	1742	2489	2016	1636
	University of Wollongong	480	592	581	738	765	592	728
<i>State Sub-total</i>		11207	13791	14839	15113	17390	17308	17124
Victoria	Deakin University	1419	1636	2355	1801	1824	1793	2288
	La Trobe University	1506	1496	1444	1433	1458	1610	1558
	Monash University	2350	2634	2642	2635	2825	2598	3344
	Royal Melbourne Institute of Technology	986	1096	1252	1332	1410	1483	1453
	Swinburne University of Technology	374	442	453	408	749	632	685
	The University of Melbourne	1509	1225	1526	1411	1508	1447	1526
	University of Ballarat	220	293	311	314	258	241	173
	Victoria University of Technology	939	792	818	821	1002	889	690
	<i>State Sub-total</i>	9303	9617	10801	10157	11036	10693	11717
Qld	Central Queensland University	787	864	1110	1094	1316	1368	1663
	Griffith University	1671	2078	2397	2339	2190	2898	2845
	James Cook University	656	776	732	815	1156	993	709
	Queensland University of Technology	2782	3002	3145	3514	3243	3461	3688
	The University of Queensland	1977	1996	2202	2482	2681	2969	3281
	University of Southern Queensland	1225	1487	1315	1188	1340	1463	1562
	University of the Sunshine Coast	0	0	0	0	0	230	238
<i>State Sub-total</i>	9098	10203	10901	11432	11926	13382	13986	
WA	Curtin University of Technology	1215	1194	1302	1576	1517	1408	1591
	Edith Cowan University	1977	2041	2078	2199	2093	1889	1716
	Murdoch University	729	778	891	1091	1242	1368	915
	The University of Notre Dame Australia	0	0	0	0	0	0	3
	The University of Western Australia	770	757	784	712	816	942	1107
	<i>State Sub-total</i>	4691	4770	5055	5578	5668	5607	5332
SA	The Flinders University of South Australia	968	1041	1013	1179	1040	1069	1056
	The University of Adelaide	822	823	947	1237	1035	844	1062
	University of South Australia	2125	2204	2202	2111	2263	1920	1569
	<i>State Sub-total</i>	3915	4068	4162	4527	4338	3833	3687
Tasmania	University of Tasmania	890	1033	1014	1314	1201	1224	1146
	<i>State Sub-total</i>	890	1033	1014	1314	1201	1224	1146
NT	Batchelor	0	11	29	22	0	9	2
	Northern Territory University	473	629	708	493	752	4	607
	<i>State Sub-total</i>	473	640	737	515	752	13	609
ACT	Australian Defence Force Academy	50	49	60	106	83	58	27
	The Australian National University	474	448	492	478	424	385	530
	University of Canberra	528	842	804	735	964	768	771
	<i>State Sub-total</i>	1052	1339	1356	1319	1471	1211	1328
Multi-State	Australian Catholic University	724	834	682	801	712	762	813
	<i>State Sub-total</i>	724	834	682	801	712	762	813
<b>Total</b>		<b>41353</b>	<b>46295</b>	<b>49547</b>	<b>50756</b>	<b>54494</b>	<b>54033</b>	<b>55742</b>

**Table 9a: Crude student attrition rates for domestic commencing 'new to higher education' undergraduate students by State, Institution and Age of student , 1994 and 2002 (%)**

State	Institution	1994		2002	
		Age of student		Age of student	
		17-20 years	Other	17-20 years	Other
NSW	Australian Film, Television and Radio School	0.0	0.0	0.0	0.0
	Avondale College	20.6	20.8	26.9	40.0
	Charles Sturt University	18.7	29.8	15.6	28.3
	Macquarie University	20.4	25.6	11.9	30.8
	National Institute of Dramatic Art	0.0	7.7	5.0	0.0
	Southern Cross University	28.9	39.8	28.6	37.6
	The University of New England	25.4	32.5	20.5	36.1
	The University of New South Wales	11.8	20.1	11.7	18.2
	The University of Newcastle	18.4	26.3	15.6	24.0
	The University of Sydney	14.3	24.2	13.1	25.3
	University of Technology, Sydney	13.8	17.9	11.8	16.5
	University of Western Sydney	28.2	30.2	19.0	24.2
	University of Wollongong	11.5	19.1	13.5	23.0
<i>State Sub-total</i>	18.3	27.4	15.0	27.6	
Victoria	Deakin University	22.8	31.1	17.1	31.0
	La Trobe University	30.5	24.5	24.3	23.6
	Monash University	15.7	29.0	12.6	26.0
	Royal Melbourne Institute of Technology	18.4	20.6	17.2	20.9
	Swinburne University of Technology	23.0	28.2	21.5	19.1
	The University of Melbourne	11.8	19.2	9.8	18.3
	University of Ballarat	28.0	22.8	20.5	24.4
	Victoria University of Technology	28.2	25.1	30.5	23.1
	<i>State Sub-total</i>	20.6	26.3	17.4	25.3
Qld	Central Queensland University	35.5	37.2	28.6	31.6
	Griffith University	25.5	24.3	27.9	26.2
	James Cook University	26.1	28.0	27.9	45.8
	Queensland University of Technology	21.0	21.3	20.6	25.0
	The University of Queensland	20.0	23.5	16.4	28.1
	University of Southern Queensland	28.7	30.8	26.6	32.5
	University of the Sunshine Coast	0.0	0.0	44.3	36.0
	<i>State Sub-total</i>	23.8	27.1	23.8	31.1
WA	Curtin University of Technology	14.7	25.9	19.3	28.5
	Edith Cowan University	26.1	35.2	23.6	30.7
	Murdoch University	24.4	25.2	19.6	23.7
	The University of Notre Dame Australia	0.0	0.0	19.7	31.0
	The University of Western Australia	17.5	19.7	12.6	19.6
	<i>State Sub-total</i>	19.6	30.2	18.7	28.1
SA	The Flinders University of South Australia	21.2	21.7	23.9	28.7
	The University of Adelaide	17.5	21.0	17.3	33.2
	University of South Australia	18.4	25.1	19.1	30.2
	<i>State Sub-total</i>	18.7	23.5	19.7	30.2
Tasmania	University of Tasmania	17.6	31.0	15.7	31.1
	<i>State Sub-total</i>	17.6	31.0	15.7	31.1
NT	Batchelor	0.0	0.0	50.0	47.0
	Northern Territory University	31.0	34.1	40.7	38.9
	<i>State Sub-total</i>	31.0	34.1	41.1	42.3
ACT	Australian Defence Force Academy	9.1	14.3	3.4	0.0
	The Australian National University	15.0	21.0	15.5	30.5
	University of Canberra	19.7	24.8	16.2	22.9
	<i>State Sub-total</i>	16.0	22.3	15.0	24.3
Multi-State	Australian Catholic University	20.5	21.5	21.5	22.3
	<i>State Sub-total</i>	20.5	21.5	21.5	22.3
<b>Total</b>		<b>20.1</b>	<b>27.0</b>	<b>18.3</b>	<b>28.6</b>

**Table 9b: Number of domestic commencing 'new to higher education' undergraduate students by State, Institution and Age of student , 1994 and 2002**

State	Institution	1994		2000	
		Age of student		Age of student	
		17-20 years	Other	17-20 years	Other
NSW	Australian Film, Television and Radio School	0	12	0	0
	Avondale College	126	48	119	30
	Charles Sturt University	1587	1722	1720	1495
	Macquarie University	1880	453	1640	383
	National Institute of Dramatic Art	14	13	20	4
	Southern Cross University	1019	738	928	861
	The University of New England	961	1091	878	1090
	The University of New South Wales	3280	700	3626	253
	The University of Newcastle	2270	691	2647	883
	The University of Sydney	3971	604	5116	554
	University of Technology, Sydney	2279	1017	2625	557
	University of Western Sydney	3393	1229	4054	1552
	University of Wollongong	1304	413	2041	495
<i>State Sub-total</i>	<i>22084</i>	<i>8731</i>	<i>25414</i>	<i>8157</i>	
Victoria	Deakin University	3169	1500	2915	1153
	La Trobe University	3507	826	3765	635
	Monash University	4503	1179	4393	592
	Royal Melbourne Institute of Technology	2997	686	2397	583
	Swinburne University of Technology	1124	397	1352	194
	The University of Melbourne	4413	650	4152	290
	University of Ballarat	883	145	863	217
	Victoria University of Technology	2298	641	1510	13
	<i>State Sub-total</i>	<i>22921</i>	<i>6031</i>	<i>21347</i>	<i>3677</i>
Qld	Central Queensland University	1042	823	1180	851
	Griffith University	2555	1292	3349	1002
	James Cook University	998	528	1623	692
	Queensland University of Technology	3247	1065	4139	1130
	The University of Queensland	3587	667	4119	467
	University of Southern Queensland	970	936	1210	917
	University of the Sunshine Coast	0	0	693	275
	<i>State Sub-total</i>	<i>12399</i>	<i>5311</i>	<i>16313</i>	<i>5334</i>
WA	Curtin University of Technology	2100	911	2626	848
	Edith Cowan University	1568	1552	1935	1211
	Murdoch University	850	468	1102	672
	The University of Notre Dame Australia	0	0	360	126
	The University of Western Australia	1983	142	1966	112
	<i>State Sub-total</i>	<i>6501</i>	<i>3073</i>	<i>7989</i>	<i>2969</i>
SA	The Flinders University of South Australia	1148	695	1634	739
	The University of Adelaide	1770	457	2188	380
	University of South Australia	2567	1524	2713	1184
	<i>State Sub-total</i>	<i>5485</i>	<i>2676</i>	<i>6535</i>	<i>2303</i>
Tasmania	University of Tasmania	1611	632	1924	814
	<i>State Sub-total</i>	<i>1611</i>	<i>632</i>	<i>1924</i>	<i>814</i>
NT	Batchelor	0	0	14	232
	Northern Territory University	400	334	300	314
	<i>State Sub-total</i>	<i>400</i>	<i>334</i>	<i>314</i>	<i>546</i>
ACT	Australian Defence Force Academy	319	14	148	10
	The Australian National University	1519	434	1275	141
	University of Canberra	1023	270	862	467
	<i>State Sub-total</i>	<i>2861</i>	<i>718</i>	<i>2285</i>	<i>618</i>
Multi-State	Australian Catholic University	1220	512	1630	494
	<i>State Sub-total</i>	<i>1220</i>	<i>512</i>	<i>1630</i>	<i>494</i>
<b>Total</b>		<b>75482</b>	<b>28018</b>	<b>83751</b>	<b>24912</b>

**Table 10a: Crude student attrition rates for domestic commencing 'NOT new to higher education' undergraduate students by State, Institution and Age of student , 1994 and 2002 (%)**

State	Institution	1994		2002	
		Age of student		Age of student	
		17-20 years	Other	17-20 years	Other
NSW	Australian Film, Television and Radio School	0.0	6.7	0.0	0.0
	Avondale College	30.8	17.0	12.5	33.3
	Charles Sturt University	20.4	27.4	13.8	29.6
	Macquarie University	17.2	25.9	9.9	28.0
	National Institute of Dramatic Art	14.3	11.1	0.0	0.0
	Southern Cross University	20.5	34.4	20.3	29.8
	The University of New England	25.8	25.9	24.7	32.6
	The University of New South Wales	15.4	18.6	10.7	24.2
	The University of Newcastle	13.2	21.1	11.6	22.5
	The University of Sydney	13.0	19.7	13.3	16.9
	University of Technology, Sydney	8.7	21.4	9.3	19.2
	University of Western Sydney	37.1	42.2	9.1	33.9
	University of Wollongong	12.9	21.3	13.2	19.6
<i>State Sub-total</i>	<i>18.5</i>	<i>26.5</i>	<i>12.9</i>	<i>26.8</i>	
Victoria	Deakin University	22.5	28.6	17.0	27.3
	La Trobe University	24.7	19.2	19.0	20.9
	Monash University	13.4	25.7	13.4	24.2
	Royal Melbourne Institute of Technology	13.3	20.6	16.3	22.4
	Swinburne University of Technology	18.5	25.9	19.9	25.0
	The University of Melbourne	10.8	19.4	11.2	13.0
	University of Ballarat	10.7	22.6	22.9	20.7
	Victoria University of Technology	19.9	25.9	21.5	24.6
	<i>State Sub-total</i>	<i>16.8</i>	<i>23.5</i>	<i>16.2</i>	<i>22.6</i>
Qld	Central Queensland University	26.5	30.9	20.8	25.4
	Griffith University	18.9	24.4	20.0	26.2
	James Cook University	22.8	30.1	32.1	37.3
	Queensland University of Technology	19.0	24.8	16.7	26.4
	The University of Queensland	13.5	30.8	14.1	25.1
	University of Southern Queensland	26.1	26.0	27.0	27.7
	University of the Sunshine Coast	0.0	0.0	43.9	39.8
	<i>State Sub-total</i>	<i>18.4</i>	<i>27.0</i>	<i>19.0</i>	<i>27.4</i>
WA	Curtin University of Technology	20.2	25.6	14.7	28.8
	Edith Cowan University	32.3	34.0	31.3	28.4
	Murdoch University	16.7	22.8	20.3	27.6
	The University of Notre Dame Australia	0.0	0.0	29.2	36.8
	The University of Western Australia	12.0	19.8	10.2	16.9
	<i>State Sub-total</i>	<i>21.2</i>	<i>28.3</i>	<i>18.0</i>	<i>27.2</i>
SA	The Flinders University of South Australia	12.7	19.1	12.8	19.6
	The University of Adelaide	18.8	19.5	11.3	21.1
	University of South Australia	15.8	25.2	16.8	28.0
	<i>State Sub-total</i>	<i>16.0</i>	<i>22.5</i>	<i>14.0</i>	<i>23.9</i>
Tasmania	University of Tasmania	15.5	28.0	12.1	21.9
	<i>State Sub-total</i>	<i>15.5</i>	<i>28.0</i>	<i>12.1</i>	<i>21.9</i>
NT	Batchelor	0.0	0.0	0.0	39.1
	Northern Territory University	44.8	30.5	30.3	37.3
	<i>State Sub-total</i>	<i>44.8</i>	<i>30.5</i>	<i>29.0</i>	<i>37.5</i>
ACT	Australian Defence Force Academy	2.4	12.5	6.7	6.9
	The Australian National University	17.1	27.2	15.4	24.6
	University of Canberra	15.4	22.0	21.5	25.4
	<i>State Sub-total</i>	<i>14.3</i>	<i>24.4</i>	<i>16.2</i>	<i>24.4</i>
Multi-State	Australian Catholic University	17.1	12.8	16.0	22.4
	<i>State Sub-total</i>	<i>17.1</i>	<i>12.8</i>	<i>16.0</i>	<i>22.4</i>
<b>Total</b>		<b>18.1</b>	<b>25.5</b>	<b>16.2</b>	<b>25.8</b>

**Table 10b: Number of domestic commencing 'NOT new to higher education' undergraduate students by State, Institution and Age of student, 1994 and 2002**

State	Institution	1994		2002	
		Age of student		Age of student	
		17-20 years	Other	17-20 years	Other
NSW	Australian Film, Television and Radio School	0	30	0	0
	Avondale College	13	47	16	15
	Charles Sturt University	181	1455	441	2259
	Macquarie University	244	571	272	629
	National Institute of Dramatic Art	7	18	16	13
	Southern Cross University	122	547	118	651
	The University of New England	159	1208	332	1938
	The University of New South Wales	337	569	516	563
	The University of Newcastle	454	791	543	717
	The University of Sydney	362	874	842	1482
	University of Technology, Sydney	300	880	280	610
	University of Western Sydney	410	1148	470	841
	University of Wollongong	147	333	159	260
	<i>State Sub-total</i>	<i>2736</i>	<i>8471</i>	<i>4005</i>	<i>9978</i>
Victoria	Deakin University	258	1161	506	1355
	La Trobe University	376	1130	616	963
	Monash University	588	1762	881	1615
	Royal Melbourne Institute of Technology	263	723	326	635
	Swinburne University of Technology	108	266	146	256
	The University of Melbourne	388	1121	546	891
	University of Ballarat	56	164	83	87
	Victoria University of Technology	271	668	349	598
		<i>State Sub-total</i>	<i>2308</i>	<i>6995</i>	<i>3453</i>
Qld	Central Queensland University	166	621	307	861
	Griffith University	608	1063	1119	1174
	James Cook University	267	389	346	711
	Queensland University of Technology	1071	1711	1568	2135
	The University of Queensland	1014	963	1361	1352
	University of Southern Queensland	203	1022	296	949
	University of the Sunshine Coast	0	0	57	108
		<i>State Sub-total</i>	<i>3329</i>	<i>5769</i>	<i>5054</i>
WA	Curtin University of Technology	421	794	729	833
	Edith Cowan University	402	1575	435	919
	Murdoch University	114	615	231	624
	The University of Notre Dame Australia	0	0	24	68
	The University of Western Australia	382	388	527	313
		<i>State Sub-total</i>	<i>1319</i>	<i>3372</i>	<i>1946</i>
SA	The Flinders University of South Australia	213	755	345	874
	The University of Adelaide	320	502	382	455
	University of South Australia	651	1474	530	1255
		<i>State Sub-total</i>	<i>1184</i>	<i>2731</i>	<i>1257</i>
Tasmania	University of Tasmania	258	632	363	925
		<i>State Sub-total</i>	<i>258</i>	<i>632</i>	<i>363</i>
NT	Batchelor	0	0	3	69
	Northern Territory University	67	406	66	424
		<i>State Sub-total</i>	<i>67</i>	<i>406</i>	<i>69</i>
ACT	Australian Defence Force Academy	42	8	89	29
	The Australian National University	117	357	286	386
	University of Canberra	156	372	205	414
		<i>State Sub-total</i>	<i>315</i>	<i>737</i>	<i>580</i>
Multi-State	Australian Catholic University	123	601	331	590
		<i>State Sub-total</i>	<i>123</i>	<i>601</i>	<i>331</i>
<b>Total</b>		<b>11639</b>	<b>29714</b>	<b>17058</b>	<b>31846</b>

**Table 11a: Crude student attrition rates for domestic commencing undergraduate students by sex, age and 'new to higher education' status, 1994 and 2002 (%)**

Sex and age	1994			2002		
	New to higher education	Not new to higher education	Total	New to higher education	Not new to higher education	Total
<b>Females</b>						
20 years and under	19.7	17.2	19.3	18.3	15.8	17.9
21-24 years	28.1	24.5	25.9	27.6	20.9	23.6
25-29 years	27.3	25.4	26.2	30.7	28.9	29.4
30-39 years	25.3	24.2	24.8	27.0	27.4	27.1
40-49 years	23.1	23.3	23.2	26.4	27.7	26.9
50-59 years	22.9	26.0	24.7	29.5	28.4	28.4
60 years and over	30.9	24.5	28.6	25.0	32.9	30.2
<b>Total</b>	<b>21.4</b>	<b>22.5</b>	<b>21.7</b>	<b>20.5</b>	<b>22.1</b>	<b>21.0</b>
<b>Males</b>						
20 years and under	20.1	19.0	19.9	17.9	16.9	17.8
21-24 years	27.6	25.4	26.5	28.7	21.5	24.5
25-29 years	29.9	26.9	28.4	30.4	28.1	29.3
30-39 years	28.0	27.3	27.7	30.4	29.6	30.2
40-49 years	31.3	29.4	30.3	33.7	32.4	33.0
50-59 years	23.9	32.7	28.3	27.0	28.0	27.3
60 years and over	33.3	34.0	32.2	35.3	31.7	33.7
<b>Total</b>	<b>22.2</b>	<b>24.5</b>	<b>22.9</b>	<b>20.6</b>	<b>23.0</b>	<b>21.5</b>

**Table 11b: Number of domestic commencing undergraduate students by sex, age and 'new to higher education' status, 1994 and 2002**

Sex and age	1994			2002		
	New to higher education	Not new to higher education	Total	New to higher education	Not new to higher education	Total
<b>Females</b>						
20 years and under	43145	6612	50766	49068	10344	60861
21-24 years	4620	6420	11383	4462	7137	12058
25-29 years	3207	3710	7093	3031	4240	7581
30-39 years	4808	4666	9709	4096	4695	9170
40-49 years	2217	2292	4636	2284	2483	4975
50-59 years	310	350	685	482	676	1206
60 years and over	68	49	119	48	76	129
<b>Total</b>	<b>58375</b>	<b>24099</b>	<b>84391</b>	<b>63471</b>	<b>29651</b>	<b>95980</b>
<b>Males</b>						
20 years and under	33602	5032	39449	35107	6722	42794
21-24 years	4358	4801	9497	3653	4877	8923
25-29 years	2766	2887	5820	2523	3001	5772
30-39 years	3154	3101	6423	2621	2933	5794
40-49 years	1036	1212	2294	1039	1267	2396
50-59 years	176	171	357	215	393	633
60 years and over	33	50	87	34	60	95
<b>Total</b>	<b>45125</b>	<b>17254</b>	<b>63927</b>	<b>45192</b>	<b>19253</b>	<b>66407</b>

Table 12a: Crude student attrition rates for domestic commencing undergraduate school leavers, 1994 and 2002 (%)

State	Institution	1994	2002
NSW	Avondale College	20.7	21.7
	Charles Sturt University	17.0	14.4
	Macquarie University	19.6	10.6
	National Institute of Dramatic Art	9.1	7.1
	Southern Cross University	28.3	26.5
	The University of New England	24.8	21.1
	The University of New South Wales	11.6	11.3
	The University of Newcastle	17.6	14.2
	The University of Sydney	13.6	12.8
	University of Technology, Sydney	13.3	11.2
	University of Western Sydney	27.7	18.2
	University of Wollongong	11.8	11.9
	<i>State Sub-total</i>	<i>17.6</i>	<i>14.0</i>
Victoria	Deakin University	23.3	16.4
	La Trobe University	27.3	23.7
	Monash University	15.4	12.2
	Royal Melbourne Institute of Technology	18.4	17.4
	Swinburne University of Technology	24.1	21.6
	The University of Melbourne	11.6	9.6
	University of Ballarat	27.6	19.6
	Victoria University of Technology	28.2	24.0
	<i>State Sub-total</i>	<i>19.8</i>	<i>16.7</i>
Qld	Central Queensland University	34.7	26.8
	Griffith University	25.0	26.5
	James Cook University	24.5	26.9
	Queensland University of Technology	19.0	19.5
	The University of Queensland	18.4	15.6
	University of Southern Queensland	28.8	25.1
	University of the Sunshine Coast	0.0	44.2
<i>State Sub-total</i>	<i>22.2</i>	<i>22.3</i>	
WA	Curtin University of Technology	15.2	17.7
	Edith Cowan University	25.8	23.7
	Murdoch University	17.1	18.8
	The University of Notre Dame Australia	0.0	19.0
	The University of Western Australia	17.1	12.3
	<i>State Sub-total</i>	<i>18.5</i>	<i>17.6</i>
SA	The Flinders University of South Australia	20.2	21.9
	The University of Adelaide	16.7	16.5
	University of South Australia	17.0	18.5
	<i>State Sub-total</i>	<i>17.6</i>	<i>18.6</i>
	University of Tasmania	16.8	15.3
	<i>State Sub-total</i>	<i>16.8</i>	<i>15.7</i>
NT	Batchelor	0.0	33.3
	Northern Territory University	30.3	37.1
	<i>State Sub-total</i>	<i>30.3</i>	<i>37.1</i>
ACT	Australian Defence Force Academy	7.7	4.4
	The Australian National University	15.6	14.2
	University of Canberra	20.2	16.7
	<i>State Sub-total</i>	<i>16.6</i>	<i>14.2</i>
Multi-State	Australian Catholic University	18.2	20.4
	<i>State Sub-total</i>	<i>18.2</i>	<i>20.4</i>
<b>TOTAL</b>		<b>19.1</b>	<b>17.4</b>

Table 12b: Number of domestic commencing undergraduate school leavers, 1994 and 2002

State	Institution	1994	2002
<b>NSW</b>	Avondale College	121	115
	Charles Sturt University	1598	1693
	Macquarie University	1954	1631
	National Institute of Dramatic Art	11	14
	Southern Cross University	1061	823
	The University of New England	963	791
	The University of New South Wales	3455	3907
	The University of Newcastle	2413	2692
	The University of Sydney	4178	5372
	University of Technology, Sydney	2200	2598
	University of Western Sydney	3245	3770
	University of Wollongong	1394	1694
	<i>State Sub-total</i>	22593	25100
<b>Victoria</b>	Deakin University	3090	2990
	La Trobe University	2780	3922
	Monash University	4838	4738
	Royal Melbourne Institute of Technology	3126	2091
	Swinburne University of Technology	984	1327
	The University of Melbourne	4428	4209
	University of Ballarat	866	822
	Victoria University of Technology	2254	1962
		<i>State Sub-total</i>	22366
<b>Qld</b>	Central Queensland University	1067	1189
	Griffith University	2156	3796
	James Cook University	1066	1592
	Queensland University of Technology	3601	4704
	The University of Queensland	4386	4879
	University of Southern Queensland	893	1169
	University of the Sunshine Coast		654
		<i>State Sub-total</i>	13169
<b>WA</b>	Curtin University of Technology	2399	2858
	Edith Cowan University	1705	1686
	Murdoch University	1086	1078
	The University of Notre Dame Australia		315
	The University of Western Australia	2254	2288
		<i>State Sub-total</i>	7444
<b>SA</b>	The Flinders University of South Australia	1329	1771
	The University of Adelaide	1992	2414
	University of South Australia	3007	2880
		<i>State Sub-total</i>	6328
<b>Tasmania</b>	University of Tasmania	1700	2002
		<i>State Sub-total</i>	1700
<b>NT</b>	Batchelor		3
	Northern Territory University	379	283
		<i>State Sub-total</i>	379
<b>ACT</b>	Australian Defence Force Academy	324	225
	The Australian National University	1375	1160
	University of Canberra	1154	856
		<i>State Sub-total</i>	2853
<b>Multi-State</b>	Australian Catholic University	505	1653
		<i>State Sub-total</i>	505
<b>TOTAL</b>		<b>77337</b>	<b>86736</b>

Table 13a: Crude student attrition rates for domestic postgraduate students by State and Institution, 1994-2002 (%)

State	Institution	1994	1995	1996	1997	1998	1999	2000	2001	2002
NSW	Australian Film, Television and Radio School	0.0	0.0	0.0	2.0	4.9	6.1	4.5	3.3	1.0
	Avondale College	0.0	14.0	17.3	16.2	28.1	12.0	35.9	17.4	15.0
	Charles Sturt University	25.0	24.5	22.5	25.5	24.4	23.6	24.8	24.2	25.7
	Macquarie University	37.0	34.5	31.2	32.0	31.4	33.9	31.1	25.3	20.7
	National Institute of Dramatic Art	0.0	0.0	7.1	0.0	7.1	0.0	0.0	0.0	0.0
	Southern Cross University	31.8	28.3	29.2	33.3	28.7	31.8	30.9	33.6	23.7
	The University of New England	21.1	21.1	21.3	19.8	19.6	20.0	21.7	21.4	23.9
	The University of New South Wales	21.3	21.0	19.7	20.4	19.3	22.8	35.6	25.7	25.6
	The University of Newcastle	22.0	23.7	23.8	23.5	24.0	27.2	23.6	21.4	25.3
	The University of Sydney	23.3	26.0	26.8	26.0	24.5	27.9	25.9	20.7	23.8
	University of Technology, Sydney	19.5	20.6	20.9	21.5	21.2	23.4	23.9	31.0	29.4
	University of Western Sydney	31.4	23.5	23.1	24.8	22.5	27.4	32.6	31.6	42.1
	University of Wollongong	21.9	21.2	25.9	26.1	27.3	25.3	25.2	20.8	24.3
<i>State Sub-total</i>		24.3	24.0	23.8	24.3	23.5	25.6	28.1	25.5	26.3
Victoria	Deakin University	23.4	21.1	26.2	24.6	26.5	25.0	23.0	21.0	32.2
	La Trobe University	23.6	32.8	25.8	24.1	23.3	23.4	25.5	23.0	23.4
	Melbourne College of Divinity	0.0	0.0	0.0	0.0	0.0	0.0	0.0	35.5	22.0
	Monash University	23.2	23.5	23.7	23.8	25.2	25.5	25.7	22.0	21.2
	Royal Melbourne Institute of Technology	20.2	23.5	27.1	27.2	28.8	29.7	28.2	26.8	28.2
	Swinburne University of Technology	45.7	47.7	24.0	38.3	31.8	35.9	40.4	33.5	30.6
	The University of Melbourne	22.1	35.4	24.2	21.6	22.1	21.1	22.0	19.7	18.1
	University of Ballarat	26.9	29.6	24.0	23.5	20.5	24.9	20.5	28.4	23.3
	Victoria University of Technology	28.2	31.6	30.5	30.1	28.7	30.5	29.0	31.2	26.9
	<i>State Sub-total</i>		24.1	28.7	25.4	25.3	25.6	25.8	26.0	23.7
Qld	Central Queensland University	27.9	24.6	28.8	26.8	27.7	28.6	26.7	35.1	30.7
	Griffith University	21.2	23.3	22.6	23.5	25.6	23.2	27.5	49.2	31.1
	James Cook University	30.9	29.7	31.9	32.0	35.2	29.0	31.1	34.6	32.3
	Queensland University of Technology	21.4	22.3	21.7	24.0	24.2	25.8	23.8	26.2	23.2
	The University of Queensland	23.4	26.3	24.9	26.0	24.2	25.8	23.4	24.7	25.5
	University of Southern Queensland	24.8	25.8	26.7	26.4	27.8	27.4	34.6	31.4	26.4
	University of the Sunshine Coast	0.0	0.0	0.0	0.0	0.0	28.4	22.5	24.2	29.2
	<i>State Sub-total</i>		23.6	24.7	24.7	25.6	26.0	26.1	26.7	31.2
WA	Curtin University of Technology	26.0	26.0	26.6	28.6	28.9	30.8	31.8	30.0	28.6
	Edith Cowan University	32.9	33.3	30.3	30.1	28.1	26.8	27.0	25.9	25.4
	Murdoch University	22.8	24.9	23.3	27.4	24.5	22.2	21.6	25.6	24.0
	The University of Notre Dame Australia	0.0	0.0	0.0	0.0	0.0	59.3	29.5	36.2	39.6
	The University of Western Australia	21.2	24.0	21.0	21.3	19.5	22.3	21.3	24.2	20.0
	<i>State Sub-total</i>		26.0	27.0	25.8	27.1	25.8	26.6	26.6	27.0
SA	The Flinders University of South Australia	22.4	20.5	22.9	23.4	22.2	26.1	25.4	30.7	24.3
	The University of Adelaide	25.0	22.1	24.9	23.5	26.2	25.4	28.9	22.9	21.7
	University of South Australia	23.7	25.6	23.9	22.3	24.0	26.6	27.6	29.0	29.6
	<i>State Sub-total</i>		23.8	23.5	24.0	22.9	24.3	26.1	27.4	27.5
Tasmania	University of Tasmania	29.8	20.8	23.8	21.1	21.8	23.5	16.8	17.3	19.6
	<i>State Sub-total</i>		29.8	20.8	23.8	21.1	21.8	23.5	16.8	17.3
NT	Batchelor	11.1	0.0	46.7	53.8	12.5	50.0	44.4	52.4	21.4
	Northern Territory University	25.9	25.6	28.3	28.3	34.1	35.0	38.8	32.4	34.4
	<i>State Sub-total</i>		25.7	25.2	28.6	28.7	33.6	35.2	38.9	32.9
ACT	Australian Defence Force Academy	24.7	22.4	23.3	24.8	24.5	36.6	34.6	31.1	31.2
	The Australian National University	44.3	45.0	33.5	33.9	37.7	32.2	38.5	36.4	31.3
	University of Canberra	23.7	21.7	21.4	22.5	23.5	24.5	24.4	25.6	26.7
	<i>State Sub-total</i>		33.6	32.8	27.4	28.2	30.5	30.0	33.1	31.6
Multi-State	Australian Catholic University	15.0	17.1	16.5	16.3	17.1	20.1	23.0	20.8	22.1
	<i>State Sub-total</i>		15.0	17.1	16.5	16.3	17.1	20.1	23.0	20.8
<b>Total</b>		<b>24.5</b>	<b>25.8</b>	<b>24.6</b>	<b>24.9</b>	<b>24.8</b>	<b>25.9</b>	<b>27.1</b>	<b>26.1</b>	<b>25.8</b>

Table 13b: Number of domestic postgraduate students by State and Institution, 1994-2002

State	Institution	1994	1995	1996	1997	1998	1999	2000	2001	2002
NSW	Australian Film, Television and Radio School	0	0	0	51	61	82	88	91	102
	Avondale College	0	50	52	68	57	50	39	23	40
	Charles Sturt University	2791	3424	3904	4499	4569	4396	4531	4718	4967
	Macquarie University	3462	3808	4108	4442	4761	4734	4607	4669	5048
	National Institute of Dramatic Art	3	11	14	12	14	9	11	5	15
	Southern Cross University	1002	1141	1401	1437	1097	1104	1061	1253	1443
	The University of New England	4019	4194	4527	4996	4777	4289	3741	3420	3748
	The University of New South Wales	6479	6764	7216	7196	7090	7973	8181	8880	10024
	The University of Newcastle	1502	1618	1730	2103	2246	2251	2148	2406	2873
	The University of Sydney	7022	7032	6928	7155	6998	6842	6423	6146	6772
	University of Technology, Sydney	5522	5365	5434	5680	6020	6522	6547	6469	6859
	University of Western Sydney	2836	3199	3650	3871	3849	4068	4182	3571	3438
University of Wollongong	2292	2591	2615	2441	2319	1974	1793	1692	1856	
<i>State Sub-total</i>		36930	39197	41579	43951	43858	44294	43352	43343	47185
Victoria	Deakin University	5314	5697	6197	5592	5366	5053	4989	7452	7874
	La Trobe University	3827	3891	4172	4123	3807	3734	3616	3540	3820
	Melbourne College of Divinity	0	0	0	0	0	0	0	307	259
	Monash University	8135	8404	8169	7946	7797	8071	7927	8266	9109
	Royal Melbourne Institute of Technology	4251	5036	5352	5348	5318	5434	5499	6285	6919
	Swinburne University of Technology	1673	1777	1848	2287	2065	2252	2546	2797	2837
	The University of Melbourne	7769	8080	8594	8493	8365	8295	8286	8531	8902
	University of Ballarat	535	649	662	673	645	667	677	680	707
	Victoria University of Technology	2128	2543	2719	2749	2787	2649	2372	2214	2355
	<i>State Sub-total</i>		33632	36077	37713	37211	36150	36155	35912	40072
Qld	Central Queensland University	1450	1446	1664	1767	1607	1314	1093	1111	1366
	Griffith University	2107	2300	2580	2732	2618	2631	2769	2948	3235
	James Cook University	1168	1241	1338	1333	1323	1257	1221	1146	1161
	Queensland University of Technology	4673	5069	5512	5762	5791	5581	5051	5101	5124
	The University of Queensland	4744	4812	5018	5339	5176	5103	5076	5507	6407
	University of Southern Queensland	1252	1827	2230	2550	2831	2979	3118	3014	3337
	University of the Sunshine Coast	0	0	0	0	0	109	138	190	236
	<i>State Sub-total</i>		15394	16695	18342	19483	19346	18974	18466	19030
WA	Curtin University of Technology	3690	4018	4049	4213	3902	3981	3880	3911	4169
	Edith Cowan University	2128	2242	2552	2837	2537	2417	2230	2235	2594
	Murdoch University	1412	1538	1634	1809	1566	1426	1548	1653	1695
	The University of Notre Dame Australia	0	0	0	0	0	27	61	47	412
	The University of Western Australia	2219	2214	2351	2506	2531	2647	2568	2623	2701
	<i>State Sub-total</i>		9449	10012	10586	11365	10536	10498	10287	10469
SA	The Flinders University of South Australia	1656	1716	1767	1759	1745	1750	1950	1939	2081
	The University of Adelaide	2431	2467	2588	2635	2530	2428	2280	2432	2739
	University of South Australia	3875	4056	4367	4418	3863	3503	3257	3151	3120
	<i>State Sub-total</i>		7962	8239	8722	8812	8138	7681	7487	7522
Tasmania	University of Tasmania	1746	1715	1713	1467	1382	1420	1431	1401	1552
	<i>State Sub-total</i>		1746	1715	1713	1467	1382	1420	1431	1401
NT	Batchelor	9	10	15	13	16	12	9	21	14
	Northern Territory University	694	704	732	736	787	864	824	808	1049
	<i>State Sub-total</i>		703	714	747	749	803	876	833	829
ACT	Australian Defence Force Academy	348	352	400	431	473	525	602	682	763
	The Australian National University	1731	1714	1813	1757	1726	1722	1884	1850	2041
	University of Canberra	1556	1552	1604	1502	1343	1282	1274	1428	1569
	<i>State Sub-total</i>		3635	3618	3817	3690	3542	3529	3760	3960
Multi-State	Australian Catholic University	1970	2187	2098	2315	2533	2432	2442	2507	2643
	<i>State Sub-total</i>		1970	2187	2098	2315	2533	2432	2442	2507
<b>Total</b>		<b>111421</b>	<b>118454</b>	<b>125317</b>	<b>129043</b>	<b>126288</b>	<b>125859</b>	<b>123970</b>	<b>129133</b>	<b>140002</b>

**Table 14a: Crude student attrition rates for domestic commencing postgraduate students by State and Institution, 1994-2002 (%)**

State	Institution	1994	1995	1996	1997	1998	1999	2000	2002
NSW	Australian Film, Television and Radio School	0.0	0.0	0.0	2.0	7.3	7.7	4.6	1.0
	Avondale College	0.0	15.8	35.0	14.6	25.9	22.2	73.3	9.1
	Charles Sturt University	29.2	28.3	26.5	28.5	26.0	27.8	28.8	32.4
	Macquarie University	27.0	26.1	24.9	28.2	28.0	29.9	27.3	22.3
	National Institute of Dramatic Art	0.0	0.0	7.1	0.0	7.1	0.0	0.0	0.0
	Southern Cross University	33.9	30.8	31.4	34.8	27.4	34.7	29.7	26.2
	The University of New England	25.1	23.4	24.0	22.4	22.9	24.1	22.8	26.5
	The University of New South Wales	22.4	20.9	20.2	19.1	18.6	21.6	33.3	30.2
	The University of Newcastle	22.3	20.9	19.5	23.2	24.2	25.3	23.6	23.4
	The University of Sydney	20.9	21.6	24.6	24.1	23.2	28.3	24.6	26.6
	University of Technology, Sydney	20.1	22.7	21.9	22.6	22.2	24.4	23.9	33.5
	University of Western Sydney	34.0	24.5	25.3	27.5	23.3	28.1	35.4	41.0
	University of Wollongong	23.6	23.6	26.7	28.4	26.2	23.0	19.6	24.9
<i>State Sub-total</i>		24.4	23.6	23.9	24.7	23.5	25.8	27.8	29.0
Victoria	Deakin University	26.1	22.2	28.2	29.0	30.1	28.0	24.4	31.8
	La Trobe University	21.8	33.7	27.3	23.6	23.1	22.2	24.6	20.9
	Melbourne College of Divinity	0.0	0.0	0.0	0.0	0.0	0.0	0.0	30.4
	Monash University	23.9	23.2	23.0	24.0	24.6	24.7	25.7	23.0
	Royal Melbourne Institute of Technology	23.5	25.6	28.6	29.3	30.1	31.6	29.9	31.3
	Swinburne University of Technology	40.4	43.0	23.5	38.7	30.8	37.3	40.5	36.4
	The University of Melbourne	19.0	34.6	20.9	18.0	18.3	17.6	17.5	13.8
	University of Ballarat	27.2	28.6	21.7	22.8	19.0	22.4	18.5	19.0
	Victoria University of Technology	29.1	30.7	31.6	31.7	28.0	28.9	29.5	29.1
<i>State Sub-total</i>		24.2	28.8	25.4	25.9	25.3	25.6	25.6	24.6
Qld	Central Queensland University	36.8	27.4	31.7	33.9	33.1	31.9	25.5	33.1
	Griffith University	22.0	24.7	26.7	25.1	29.1	25.6	29.6	32.0
	James Cook University	29.8	30.5	33.8	31.3	35.8	34.4	30.9	41.6
	Queensland University of Technology	23.3	24.1	22.8	25.3	25.0	29.3	26.4	27.0
	The University of Queensland	20.5	20.0	22.9	24.1	23.7	26.3	23.0	27.8
	University of Southern Queensland	25.1	28.7	28.5	29.1	31.7	32.7	36.7	31.1
	University of the Sunshine Coast	0.0	0.0	0.0	0.0	0.0	32.3	33.3	31.3
<i>State Sub-total</i>		24.2	24.6	25.7	26.7	27.5	29.2	28.2	30.0
WA	Curtin University of Technology	28.3	28.9	28.9	30.7	30.4	33.6	36.7	29.1
	Edith Cowan University	37.9	37.4	32.2	33.3	29.1	29.5	29.1	26.8
	Murdoch University	25.0	27.7	27.0	28.4	25.1	23.1	24.6	20.8
	The University of Notre Dame Australia	0.0	0.0	0.0	0.0	0.0	52.4	29.2	46.9
	The University of Western Australia	19.3	23.9	19.6	18.5	19.3	20.8	17.8	15.2
	<i>State Sub-total</i>		28.3	30.1	27.6	28.7	26.7	28.4	29.0
SA	The Flinders University of South Australia	21.4	19.6	24.6	25.4	26.9	30.3	26.7	31.0
	The University of Adelaide	22.5	19.5	25.2	21.0	23.4	23.5	24.1	20.8
	University of South Australia	24.9	28.0	26.1	22.8	24.0	28.9	28.0	33.5
	<i>State Sub-total</i>		23.5	24.2	25.6	22.7	24.4	27.5	26.6
Tasmania	University of Tasmania	24.7	17.4	22.1	18.2	23.1	22.6	18.1	20.5
	<i>State Sub-total</i>		24.7	17.4	22.1	18.2	23.1	22.6	18.1
NT	Batchelor	11.1	0.0	46.7	70.0	11.1	100.0	50.0	21.4
	Northern Territory University	26.1	25.3	35.3	30.8	37.6	36.6	43.4	43.3
	<i>State Sub-total</i>		25.7	25.1	35.7	31.8	37.1	36.7	43.4
ACT	Australian Defence Force Academy	26.8	22.6	28.3	25.3	27.3	39.5	38.2	34.6
	The Australian National University	47.0	45.9	25.2	29.9	33.3	33.3	35.4	29.3
	University of Canberra	27.5	24.2	23.4	24.2	24.0	25.7	25.3	28.3
	<i>State Sub-total</i>		36.2	32.9	24.7	26.9	28.7	31.3	32.3
Multi-State	Australian Catholic University	17.6	17.9	19.7	17.7	19.9	23.8	26.6	23.6
	<i>State Sub-total</i>		17.6	17.9	19.7	17.7	19.9	23.8	26.6
<b>Total</b>		<b>24.8</b>	<b>25.9</b>	<b>25.0</b>	<b>25.4</b>	<b>25.1</b>	<b>26.7</b>	<b>27.4</b>	<b>27.4</b>

Table 14b: Number of domestic commencing postgraduate students by State and Institution, 1994-2002

State	Institution	1994	1995	1996	1997	1998	1999	2000	2002
NSW	Australian Film, Television and Radio School	0	0	0	51	41	65	87	102
	Avondale College	0	38	20	48	27	27	15	22
	Charles Sturt University	1628	1997	2079	2506	2468	2202	2412	1925
	Macquarie University	1795	2054	2096	2312	2475	2272	2281	2251
	National Institute of Dramatic Art	3	11	14	12	14	9	11	15
	Southern Cross University	514	633	765	670	536	631	612	543
	The University of New England	1994	1961	2289	2300	1911	1703	1429	1575
	The University of New South Wales	3129	3169	3403	3158	3221	4174	4127	3709
	The University of Newcastle	752	779	841	1298	1164	1038	1094	1269
	The University of Sydney	3187	3123	3054	3031	3009	2625	2703	2581
	University of Technology, Sydney	3128	2856	3023	3079	3242	3580	3474	2865
	University of Western Sydney	1518	1745	1824	1894	1850	1954	2173	1413
University of Wollongong	1241	1412	1282	1206	1106	912	789	716	
<i>State Sub-total</i>		18889	19778	20690	21565	21064	21192	21207	18986
Victoria	Deakin University	2590	3035	3325	2698	2590	2306	2316	2670
	La Trobe University	1721	1737	1972	1800	1663	1737	1636	1692
	Melbourne College of Divinity	0	0	0	0	0	0	0	46
	Monash University	3550	3653	3184	3284	3314	3849	3609	3788
	Royal Melbourne Institute of Technology	2000	2514	2530	2431	2552	2634	2690	2726
	Swinburne University of Technology	883	1020	1173	1349	1165	1279	1452	1050
	The University of Melbourne	3688	3867	4196	3871	3811	3742	3789	3720
	University of Ballarat	294	385	368	360	336	348	394	368
	Victoria University of Technology	1235	1442	1455	1390	1609	1442	1128	1119
	<i>State Sub-total</i>	15961	17653	18203	17183	17040	17337	17014	17179
Qld	Central Queensland University	684	649	837	871	724	546	423	656
	Griffith University	1188	1226	1253	1268	1017	1174	1238	1216
	James Cook University	480	509	550	549	523	500	459	471
	Queensland University of Technology	2462	2740	3078	3108	3125	2847	2654	2118
	The University of Queensland	1974	1747	2021	2281	2218	1891	1967	2410
	University of Southern Queensland	716	1052	1241	1504	1497	1484	1506	1277
	University of the Sunshine Coast	0	0	0	0	0	62	54	83
<i>State Sub-total</i>	7504	7923	8980	9581	9104	8504	8301	8237	
WA	Curtin University of Technology	1659	1824	1811	1907	1521	1699	1750	1550
	Edith Cowan University	1138	1222	1433	1497	1091	1177	1080	1336
	Murdoch University	657	750	727	871	558	503	655	611
	The University of Notre Dame Australia	0	0	0	0	0	21	48	194
	The University of Western Australia	944	834	1036	1034	1005	1016	965	923
	<i>State Sub-total</i>	4398	4630	5007	5309	4175	4416	4498	4614
SA	The Flinders University of South Australia	724	731	737	686	700	703	921	809
	The University of Adelaide	1045	1009	1149	1185	1062	1022	896	1042
	University of South Australia	1955	2154	2325	2252	1718	1656	1489	1300
	<i>State Sub-total</i>	3724	3894	4211	4123	3480	3381	3306	3151
Tasmania	University of Tasmania	821	892	736	565	407	532	536	575
	<i>State Sub-total</i>	821	892	736	565	407	532	536	575
NT	Batchelor	9	2	15	10	9	1	4	14
	Northern Territory University	353	348	450	390	436	533	452	510
	<i>State Sub-total</i>	362	350	465	400	445	534	456	524
ACT	Australian Defence Force Academy	168	168	205	233	286	301	390	301
	The Australian National University	804	763	816	842	732	825	905	813
	University of Canberra	828	941	902	788	643	725	739	913
	<i>State Sub-total</i>	1800	1872	1923	1863	1661	1851	2034	2027
Multi-State	Australian Catholic University	1146	1330	1081	1345	1474	1295	1334	1225
	<i>State Sub-total</i>	1146	1330	1081	1345	1474	1295	1334	1225
<b>Total</b>		<b>54605</b>	<b>58322</b>	<b>61296</b>	<b>61934</b>	<b>58850</b>	<b>59042</b>	<b>58686</b>	<b>56518</b>

Table 15a: Crude student attrition rates for all international students by State and Institution, 1994-2002 (%)

State	Institution	1994	1995	1996	1997	1998	1999	2000	2001	2002
NSW	Avondale College	16.1	7.9	30.8	17.8	26.5	26.5	30.7	17.9	41.4
	Charles Sturt University	23.1	17.6	15.5	24.4	22.2	16.6	20.8	24.5	28.0
	Macquarie University	30.0	30.0	28.6	28.9	32.3	29.1	27.3	24.5	19.0
	National Institute of Dramatic Art	0.0	0.0	0.0	0.0	33.3	33.3	0.0	0.0	0.0
	Southern Cross University	44.7	53.3	46.9	32.5	29.2	26.2	43.5	36.7	26.1
	The University of New England	20.6	24.9	21.2	18.1	33.7	22.1	26.6	28.3	25.0
	The University of New South Wales	15.0	14.0	12.0	19.2	10.5	10.8	27.6	11.7	11.2
	The University of Newcastle	16.8	13.8	15.2	15.5	14.2	14.1	15.8	20.2	18.4
	The University of Sydney	16.8	15.5	15.1	13.6	17.8	17.9	12.3	15.7	16.9
	University of Technology, Sydney	19.3	17.2	18.4	21.9	20.3	15.7	16.9	20.8	19.6
	University of Western Sydney	24.2	24.7	23.5	21.2	20.5	23.1	20.8	26.0	16.6
	University of Wollongong	20.1	15.4	15.5	15.6	21.8	18.5	18.4	15.0	20.5
	<i>State Sub-total</i>		19.7	18.5	17.7	19.9	19.2	17.7	21.7	20.1
Victoria	Deakin University	19.3	21.0	21.0	15.4	19.7	17.2	17.0	15.6	19.4
	La Trobe University	25.3	30.4	29.5	26.1	19.7	20.3	17.5	15.8	19.9
	Monash University	16.1	15.1	19.4	15.4	14.5	17.9	14.6	11.7	13.0
	Royal Melbourne Institute of Technology	16.6	20.6	14.4	15.1	20.2	18.5	22.2	23.5	17.7
	Swinburne University of Technology	39.5	32.7	22.0	21.5	19.9	24.7	19.7	25.7	22.8
	The University of Melbourne	19.3	18.8	19.9	14.0	12.7	14.4	14.5	14.3	14.8
	University of Ballarat	31.8	26.6	24.8	35.1	24.3	20.0	31.0	22.2	28.8
	Victoria University of Technology	26.2	21.5	36.1	21.0	24.9	20.1	27.5	29.3	24.6
	<i>State Sub-total</i>	19.6	19.9	20.7	16.9	18.1	18.3	18.7	18.3	17.4
Qld	Central Queensland University	27.7	32.0	36.4	26.1	23.3	26.5	23.8	21.8	21.2
	Griffith University	15.9	19.4	17.5	20.2	19.3	17.4	19.4	20.3	17.8
	James Cook University	33.9	31.3	34.7	38.5	42.9	39.5	44.3	40.8	38.5
	Queensland University of Technology	9.7	8.0	9.0	11.9	11.2	10.3	10.6	11.4	10.7
	The University of Queensland	29.5	27.9	27.0	28.1	26.1	15.0	13.2	12.1	11.9
	University of Southern Queensland	24.1	25.3	25.6	30.1	32.3	29.2	32.8	30.0	29.0
	University of the Sunshine Coast	0.0	0.0	0.0	0.0	0.0	37.5	35.0	18.1	28.6
	<i>State Sub-total</i>	21.9	22.5	23.3	24.5	24.2	21.3	21.9	20.6	19.8
WA	Curtin University of Technology	12.9	14.8	13.5	12.9	15.4	19.5	15.4	17.1	13.2
	Edith Cowan University	18.4	16.3	21.0	23.1	21.7	18.1	21.5	17.8	17.3
	Murdoch University	12.0	15.4	12.3	16.7	13.8	19.5	16.6	13.9	15.9
	The University of Notre Dame Australia	0.0	0.0	0.0	0.0	0.0	100.0	0.0	0.0	14.2
	The University of Western Australia	10.8	13.0	10.6	12.3	11.1	10.0	10.1	8.7	9.5
	<i>State Sub-total</i>	13.1	14.7	13.9	14.9	15.5	18.0	15.9	15.7	13.8
SA	The Flinders University of South Australia	12.5	13.7	22.7	27.2	16.3	12.9	10.3	13.6	18.9
	The University of Adelaide	16.2	19.4	18.8	20.6	18.7	8.8	11.9	11.6	11.1
	University of South Australia	30.8	23.4	18.7	15.1	13.9	22.5	15.0	13.4	15.8
	<i>State Sub-total</i>	20.8	20.0	19.5	19.0	15.6	17.9	13.7	13.1	15.2
Tasmania	University of Tasmania	17.6	14.4	16.8	17.3	13.7	20.7	17.4	11.6	13.5
	<i>State Sub-total</i>	17.6	14.4	16.8	17.3	13.7	20.7	17.4	11.6	13.5
NT	Northern Territory University	13.4	27.8	43.0	23.4	23.9	20.9	26.0	28.1	39.7
	<i>State Sub-total</i>	13.4	27.8	43.0	23.4	23.9	20.9	26.0	28.1	39.7
ACT	Australian Defence Force Academy	30.0	8.3	13.3	15.9	26.8	9.4	14.1	13.6	9.5
	The Australian National University	30.1	33.2	21.1	24.0	22.4	24.9	21.4	18.6	17.0
	University of Canberra	13.4	14.3	15.5	21.0	15.8	17.7	14.5	18.8	17.4
	<i>State Sub-total</i>	24.6	24.8	18.6	22.4	19.7	20.9	17.7	18.5	16.9
Multi-State	Australian Catholic University	19.2	27.6	29.1	47.9	47.0	38.1	49.3	24.7	22.2
	<i>State Sub-total</i>	19.2	27.6	29.1	47.9	47.0	38.1	49.3	24.7	22.2
<b>Total</b>		<b>19.2</b>	<b>19.3</b>	<b>19.3</b>	<b>19.1</b>	<b>19.0</b>	<b>18.7</b>	<b>19.4</b>	<b>18.5</b>	<b>17.7</b>

Table 15b: Number of international students by State and Institution, 1994-2002

State	Institution	1994	1995	1996	1997	1998	1999	2000	2001	2002
NSW	Avondale College	31	38	52	45	49	49	101	95	128
	Charles Sturt University	981	958	1176	1421	1676	3383	5531	5989	6443
	Macquarie University	1046	1282	1494	1569	1720	2047	2747	3773	4412
	National Institute of Dramatic Art	0	3	4	3	3	3	3	2	4
	Southern Cross University	38	75	179	372	435	439	648	722	1381
	The University of New England	431	458	410	398	439	348	549	775	1049
	The University of New South Wales	3114	3291	3758	4444	4763	5325	6234	7032	8155
	The University of Newcastle	600	623	722	867	961	1036	1093	1408	1980
	The University of Sydney	1359	1546	1912	2279	2598	3008	3504	4214	5117
	University of Technology, Sydney	616	835	993	1531	2079	2498	3050	3415	4146
	University of Western Sydney	1123	1545	1727	1894	2881	3358	4528	5218	6211
University of Wollongong	1341	1499	1862	2149	2024	2035	2378	3218	4666	
<i>State Sub-total</i>	<i>10680</i>	<i>12153</i>	<i>14289</i>	<i>16972</i>	<i>19628</i>	<i>23529</i>	<i>30366</i>	<i>35861</i>	<i>43692</i>	
Victoria	Deakin University	999	965	1490	1860	2287	2161	2259	2661	3102
	La Trobe University	600	618	867	1186	1281	1608	1817	2462	2665
	Monash University	4550	5110	5761	6469	7060	7983	9153	10675	12141
	Royal Melbourne Institute of Technology	3803	4644	5158	5910	6973	7861	9076	9660	10403
	Swinburne University of Technology	691	885	1105	1252	1356	1571	1954	2490	2596
	The University of Melbourne	1566	1732	2005	2396	3125	4076	4956	5644	6765
	University of Ballarat	107	124	129	328	300	411	484	803	1585
	Victoria University of Technology	1483	1894	2025	1902	2732	2622	2852	3027	3292
	<i>State Sub-total</i>	<i>13799</i>	<i>15972</i>	<i>18540</i>	<i>21303</i>	<i>25114</i>	<i>28293</i>	<i>32551</i>	<i>37457</i>	<i>42598</i>
Qld	Central Queensland University	426	588	1113	1473	1879	2491	3618	5991	7563
	Griffith University	759	1019	1436	1904	2211	2407	2779	3077	3924
	James Cook University	348	361	360	369	468	544	670	801	947
	Queensland University of Technology	1211	1388	1660	2040	2218	2390	2674	3233	3856
	The University of Queensland	1207	1478	1647	1925	2111	2114	2479	3061	3782
	University of Southern Queensland	1556	2437	2958	3449	3597	3277	3322	3635	4523
	University of the Sunshine Coast	0	0	0	0	0	8	20	221	231
	<i>State Sub-total</i>	<i>5507</i>	<i>7271</i>	<i>9174</i>	<i>11160</i>	<i>12484</i>	<i>13231</i>	<i>15562</i>	<i>20035</i>	<i>24850</i>
WA	Curtin University of Technology	2856	3346	4135	5139	6041	6785	7308	8368	8619
	Edith Cowan University	842	1000	1189	1488	1574	1590	2140	2513	3002
	Murdoch University	911	981	1139	1339	1397	1722	1860	1938	1858
	The University of Notre Dame Australia	0	0	0	0	0	1	0	0	261
	The University of Western Australia	1177	1345	1510	1600	1579	1638	1664	1823	2144
	<i>State Sub-total</i>	<i>5786</i>	<i>6672</i>	<i>7973</i>	<i>9566</i>	<i>10591</i>	<i>11736</i>	<i>12972</i>	<i>14642</i>	<i>15884</i>
SA	The Flinders University of South Australia	519	510	578	632	590	672	872	1068	1230
	The University of Adelaide	990	1080	1162	1227	1324	1288	1365	1431	1962
	University of South Australia	895	1097	1323	1838	2511	3322	4321	5591	6707
	<i>State Sub-total</i>	<i>2404</i>	<i>2687</i>	<i>3063</i>	<i>3697</i>	<i>4425</i>	<i>5282</i>	<i>6558</i>	<i>8090</i>	<i>9899</i>
Tasmania	University of Tasmania	874	1052	1053	1067	1105	1101	1082	1000	1066
	<i>State Sub-total</i>	<i>874</i>	<i>1052</i>	<i>1053</i>	<i>1067</i>	<i>1105</i>	<i>1101</i>	<i>1082</i>	<i>1000</i>	<i>1066</i>
NT	Northern Territory University	97	108	128	128	180	153	181	185	239
	<i>State Sub-total</i>	<i>97</i>	<i>108</i>	<i>128</i>	<i>128</i>	<i>180</i>	<i>153</i>	<i>181</i>	<i>185</i>	<i>239</i>
ACT	Australian Defence Force Academy	50	48	60	69	71	96	99	118	116
	The Australian National University	982	898	886	830	811	882	929	1226	1591
	University of Canberra	514	637	608	587	704	774	975	1340	1422
	<i>State Sub-total</i>	<i>1546</i>	<i>1583</i>	<i>1554</i>	<i>1486</i>	<i>1586</i>	<i>1752</i>	<i>2003</i>	<i>2684</i>	<i>3129</i>
Multi-State	Australian Catholic University	151	170	227	326	283	202	219	328	645
	<i>State Sub-total</i>	<i>151</i>	<i>170</i>	<i>227</i>	<i>326</i>	<i>283</i>	<i>202</i>	<i>219</i>	<i>328</i>	<i>645</i>
<b>Total</b>		<b>40844</b>	<b>47668</b>	<b>56001</b>	<b>65705</b>	<b>75396</b>	<b>85279</b>	<b>101494</b>	<b>120282</b>	<b>142002</b>

Table 16a: Crude attrition rates for international undergraduate students by State and Institution, 1994-2002 (%)

State	Institution	1994	1995	1996	1997	1998	1999	2000	2001	2002
NSW	Avondale College	16.1	7.9	29.8	20.5	26.8	27.5	37.1	25.0	43.6
	Charles Sturt University	19.8	13.4	14.1	23.8	19.8	15.0	18.2	24.9	27.6
	Macquarie University	17.1	16.3	19.3	12.5	17.6	16.4	15.8	16.1	15.5
	National Institute of Dramatic Art	0.0	0.0	0.0	0.0	33.3	33.3	0.0	0.0	0.0
	Southern Cross University	16.7	18.8	37.3	24.8	35.1	15.5	52.3	24.9	21.5
	The University of New England	18.0	15.5	8.6	10.3	20.8	20.3	18.6	16.1	18.1
	The University of New South Wales	10.4	8.9	8.2	16.8	7.8	7.4	17.8	7.4	8.6
	The University of Newcastle	10.1	9.7	9.5	13.0	13.5	11.2	13.4	14.3	14.1
	The University of Sydney	10.6	9.6	7.8	8.7	12.9	9.3	7.8	11.0	13.0
	University of Technology, Sydney	14.5	8.7	20.9	18.4	19.6	16.6	16.6	19.2	18.5
	University of Western Sydney	22.6	30.2	23.1	23.2	20.2	20.1	19.8	23.1	14.8
	University of Wollongong	16.3	10.2	11.6	13.2	21.3	17.1	19.0	15.0	17.0
	<i>State Sub-total</i>		14.5	13.2	13.1	16.4	15.8	13.6	17.2	16.9
Victoria	Deakin University	16.4	14.5	14.1	11.8	16.9	15.8	17.7	14.9	17.4
	La Trobe University	21.6	23.7	26.7	25.0	19.3	17.3	14.7	13.0	17.6
	Monash University	13.5	12.0	17.0	13.7	13.1	17.6	13.3	9.6	11.1
	Royal Melbourne Institute of Technology	13.4	18.4	12.8	14.0	17.2	18.2	21.9	23.3	15.4
	Swinburne University of Technology	32.6	27.6	22.1	18.5	20.1	18.1	16.6	15.6	15.6
	The University of Melbourne	15.3	15.9	17.2	10.2	11.0	12.0	13.7	13.2	14.2
	University of Ballarat	31.2	16.5	24.4	30.2	25.6	19.8	29.3	21.7	36.4
	Victoria University of Technology	23.5	16.8	38.7	21.2	27.7	21.2	28.8	33.9	22.9
	<i>State Sub-total</i>		16.3	16.2	18.6	14.8	16.3	17.1	17.7	16.6
Qld	Central Queensland University	20.4	28.2	35.8	23.7	20.8	26.8	24.2	22.1	21.2
	Griffith University	14.6	19.9	15.5	18.0	17.8	18.3	19.7	19.5	21.2
	James Cook University	33.5	32.4	35.2	42.7	50.5	46.6	49.4	45.8	45.0
	Queensland University of Technology	6.5	6.6	7.3	9.5	9.1	8.9	9.9	11.1	10.2
	The University of Queensland	9.3	12.5	13.4	11.3	10.2	9.1	9.5	7.9	7.7
	University of Southern Queensland	22.5	22.7	23.7	28.1	31.1	28.5	30.4	28.9	26.7
	University of the Sunshine Coast	0.0	0.0	0.0	0.0	0.0	60.0	18.2	25.0	14.3
	<i>State Sub-total</i>		16.1	18.5	19.9	20.8	21.5	20.7	21.0	19.9
WA	Curtin University of Technology	9.4	10.6	11.9	10.1	12.3	17.1	12.1	13.8	9.9
	Edith Cowan University	17.2	12.2	19.0	23.0	21.8	17.3	21.6	16.9	17.1
	Murdoch University	4.2	5.3	5.8	6.1	6.1	8.3	11.4	11.6	11.3
	The University of Notre Dame Australia	0.0	0.0	0.0	0.0	0.0	100.0	0.0	0.0	13.0
	The University of Western Australia	4.8	5.9	5.4	7.2	6.8	7.2	8.0	7.3	8.9
	<i>State Sub-total</i>		8.9	9.2	10.9	11.1	12.1	14.7	13.1	13.4
SA	The Flinders University of South Australia	7.7	11.1	8.1	12.7	10.5	8.3	8.1	10.2	11.2
	The University of Adelaide	6.7	6.1	4.8	6.9	4.4	5.3	7.4	8.2	6.9
	University of South Australia	11.3	13.4	11.3	13.5	11.1	24.5	14.0	13.4	11.5
	<i>State Sub-total</i>		8.7	10.3	8.5	11.2	9.0	17.5	11.8	12.0
Tasmania	University of Tasmania	14.3	9.6	14.4	14.2	10.7	20.3	17.8	10.4	11.3
	<i>State Sub-total</i>		14.3	9.6	14.4	14.2	10.7	20.3	17.8	10.4
NT	Northern Territory University	9.8	22.6	34.5	31.8	24.6	27.7	34.0	39.3	28.2
	<i>State Sub-total</i>		9.8	22.6	34.5	31.8	24.6	27.7	34.0	39.3
ACT	Australian Defence Force Academy	18.8	0.0	4.5	5.0	0.0	4.2	12.0	8.3	4.2
	The Australian National University	13.8	16.5	8.0	11.6	10.3	9.0	10.7	8.7	13.0
	University of Canberra	12.0	10.7	13.4	18.0	17.0	19.8	14.8	23.8	16.0
	<i>State Sub-total</i>		13.0	12.9	10.9	14.9	13.7	14.6	13.1	17.5
Multi-State	Australian Catholic University	22.0	29.8	28.3	54.4	29.3	21.7	50.0	14.9	18.3
	<i>State Sub-total</i>		22.0	29.8	28.3	54.4	29.3	21.7	50.0	14.9
<b>Total</b>		<b>14.2</b>	<b>14.4</b>	<b>15.8</b>	<b>15.6</b>	<b>15.9</b>	<b>16.6</b>	<b>17.1</b>	<b>16.5</b>	<b>15.4</b>

Table 16b: Number of international undergraduate students by State and Institution, 1994-2002

State	Institution	1994	1995	1996	1997	1998	1999	2000	2001	2002
NSW	Avondale College	31	38	47	39	41	40	62	68	117
	Charles Sturt University	637	626	790	974	1198	2230	3818	4025	4002
	Macquarie University	434	412	460	423	535	818	1201	1676	2237
	National Institute of Dramatic Art	0	3	3	3	3	3	3	1	3
	Southern Cross University	18	16	59	113	134	148	258	362	963
	The University of New England	111	110	116	117	120	118	204	403	541
	The University of New South Wales	1932	2027	2305	2662	2874	3102	3433	3904	4490
	The University of Newcastle	414	474	545	644	630	607	574	671	1021
	The University of Sydney	803	899	1163	1410	1587	1886	2238	2725	3195
	University of Technology, Sydney	386	497	671	901	1222	1352	1412	1722	1985
	University of Western Sydney	833	987	1035	1114	1858	2189	2712	3148	4044
	University of Wollongong	731	764	1009	1269	1280	1066	1078	1378	2032
	<i>State Sub-total</i>		6330	6853	8203	9669	11482	13559	16993	20083
Victoria	Deakin University	786	718	1152	1598	2006	1922	1914	1924	2141
	La Trobe University	402	346	592	844	875	1142	1287	1611	1664
	Monash University	3897	4391	5015	5738	6294	6950	7569	8351	9170
	Royal Melbourne Institute of Technology	3196	3838	4235	4750	5644	6376	7387	7802	8349
	Swinburne University of Technology	564	724	846	915	986	1039	1274	1409	1544
	The University of Melbourne	1166	1297	1509	1827	2502	3272	3982	4431	5242
	University of Ballarat	93	79	86	268	254	339	437	492	822
	Victoria University of Technology	1237	1638	1565	1215	1656	1513	1696	1702	1805
	<i>State Sub-total</i>		11341	13031	15000	17155	20217	22553	25546	27722
Qld	Central Queensland University	299	401	782	1001	1343	1839	2498	3841	4887
	Griffith University	611	742	988	1314	1583	1682	1825	1987	2459
	James Cook University	197	216	210	227	305	350	474	601	705
	Queensland University of Technology	1014	1151	1316	1573	1665	1879	2056	2384	2805
	The University of Queensland	473	592	709	835	933	1116	1476	1808	2249
	University of Southern Queensland	1433	2165	2626	2984	3060	2435	2224	2147	2420
	University of the Sunshine Coast	0	0	0	0	0	5	11	28	42
	<i>State Sub-total</i>		4027	5267	6631	7934	8889	9306	10564	12796
WA	Curtin University of Technology	2446	2819	3542	4267	5038	5436	5702	6178	6336
	Edith Cowan University	738	787	959	1204	1251	1245	1580	1855	2225
	Murdoch University	746	790	881	1038	1074	1171	1200	1295	1440
	The University of Notre Dame Australia	0	0	0	0	0	1	0	0	162
	The University of Western Australia	945	1068	1202	1264	1229	1165	1132	1185	1338
	<i>State Sub-total</i>		4875	5464	6584	7773	8592	9018	9614	10513
SA	The Flinders University of South Australia	389	368	358	395	400	484	565	630	762
	The University of Adelaide	550	606	682	741	911	1013	963	1012	1328
	University of South Australia	565	738	910	1194	1739	2404	2866	3421	3692
	<i>State Sub-total</i>		1504	1712	1950	2330	3050	3901	4394	5063
Tasmania	University of Tasmania	697	858	909	928	966	976	970	869	926
	<i>State Sub-total</i>		697	858	909	928	966	976	970	869
NT	Northern Territory University	61	62	58	44	57	65	94	89	85
	<i>State Sub-total</i>		61	62	58	44	57	65	94	89
ACT	Australian Defence Force Academy	16	18	22	20	23	24	25	24	24
	The Australian National University	383	352	326	293	271	299	335	472	683
	University of Canberra	384	457	426	384	370	369	493	707	736
	<i>State Sub-total</i>		783	827	774	697	664	692	853	1203
Multi-State	Australian Catholic University	118	151	173	252	174	115	146	161	311
	<i>State Sub-total</i>		118	151	173	252	174	115	146	161
<b>Total</b>		<b>29736</b>	<b>34225</b>	<b>40282</b>	<b>46782</b>	<b>54091</b>	<b>60185</b>	<b>69174</b>	<b>78499</b>	<b>90982</b>

Table 17a: Crude student attrition rates for international commencing undergraduate students by State and Institution, 1994-2002 (%)

State	Institution	1994	1995	1996	1997	1998	1999	2000	2001	2002
NSW	Avondale College	26.7	15.8	41.7	36.8	33.3	47.6	47.5	38.9	58.3
	Charles Sturt University	24.6	13.6	14.5	26.8	21.4	15.6	20.0	19.4	25.8
	Macquarie University	24.8	28.2	23.0	13.2	20.9	17.5	17.0	16.0	12.8
	National Institute of Dramatic Art	0.0	0.0	0.0	0.0	33.3	100.0	0.0	0.0	0.0
	Southern Cross University	0.0	0.0	35.4	25.6	47.1	14.4	64.4	33.8	58.3
	The University of New England	25.0	19.6	14.6	10.5	31.7	28.1	18.0	15.9	18.8
	The University of New South Wales	10.1	9.9	8.9	9.5	9.1	8.8	9.5	7.9	9.3
	The University of Newcastle	8.4	8.5	9.6	11.5	14.9	13.8	16.1	17.1	14.3
	The University of Sydney	16.7	15.5	13.6	14.8	11.6	14.0	9.4	12.1	11.3
	University of Technology, Sydney	12.8	9.0	22.7	21.6	23.2	11.9	14.5	12.5	9.9
	University of Western Sydney	30.0	43.7	29.2	30.3	21.4	21.3	17.7	16.6	8.0
	University of Wollongong	13.5	7.8	11.2	13.2	28.9	21.8	22.3	13.7	15.7
	<i>State Sub-total</i>		17.7	17.5	16.1	17.6	19.0	15.6	17.3	14.8
Victoria	Deakin University	24.1	16.9	15.1	12.0	17.9	14.1	18.7	15.3	19.0
	La Trobe University	28.0	29.2	34.3	32.2	25.1	18.6	10.5	13.8	17.3
	Monash University	13.1	12.6	14.2	12.8	13.4	12.9	11.7	10.1	11.5
	Royal Melbourne Institute of Technology	15.3	21.5	15.4	17.3	22.1	20.1	26.4	21.6	22.8
	Swinburne University of Technology	28.8	18.5	27.7	23.6	22.6	19.3	16.4	16.0	13.9
	The University of Melbourne	31.9	30.6	32.5	20.0	17.8	21.0	25.0	24.5	27.2
	University of Ballarat	52.3	22.2	35.1	33.3	11.8	7.6	10.4	13.4	13.7
	Victoria University of Technology	28.8	26.7	43.8	28.4	44.8	23.0	31.6	43.7	29.7
	<i>State Sub-total</i>		20.1	19.9	20.6	18.2	20.6	17.8	20.5	19.0
Qld	Central Queensland University	28.1	34.4	38.0	27.6	24.1	29.6	25.4	24.0	23.1
	Griffith University	20.3	25.8	18.7	22.7	21.3	23.9	23.4	22.9	27.8
	James Cook University	37.4	48.3	51.3	54.9	63.3	60.5	61.9	55.8	64.7
	Queensland University of Technology	4.7	5.6	6.8	9.5	9.3	7.9	10.3	11.1	9.4
	The University of Queensland	12.5	11.4	22.6	12.4	8.8	8.3	9.2	7.8	8.9
	University of Southern Queensland	25.8	24.5	27.1	30.2	36.3	35.0	37.2	33.0	35.7
	University of the Sunshine Coast	0.0	0.0	0.0	0.0	0.0	66.7	20.0	26.3	33.3
	<i>State Sub-total</i>		18.3	21.1	23.8	23.4	25.3	23.9	24.2	22.6
WA	Curtin University of Technology	13.2	9.6	13.5	10.1	10.2	16.5	13.1	15.7	11.7
	Edith Cowan University	30.7	17.2	22.8	29.5	26.4	18.8	24.7	17.4	23.9
	Murdoch University	4.5	5.7	6.8	6.6	9.2	10.7	11.8	12.0	10.1
	The University of Notre Dame Australia	0.0	0.0	0.0	0.0	0.0	0.0	0.0	0.0	20.7
	The University of Western Australia	9.4	8.8	7.7	10.9	10.9	10.4	9.7	8.7	13.1
	<i>State Sub-total</i>		13.5	10.1	13.2	12.8	12.5	15.5	14.8	14.9
SA	The Flinders University of South Australia	13.6	9.4	11.8	20.0	13.9	12.6	9.6	12.7	15.0
	The University of Adelaide	6.8	9.1	7.1	12.1	8.3	9.5	7.9	9.8	8.1
	University of South Australia	14.4	16.2	13.8	17.8	10.9	27.8	15.2	14.9	13.5
	<i>State Sub-total</i>		11.4	13.2	11.6	16.8	10.9	23.4	13.4	13.8
Tasmania	University of Tasmania	20.0	12.5	16.9	21.1	12.1	20.1	21.1	11.8	12.9
	<i>State Sub-total</i>		20.0	12.5	16.9	21.1	12.1	20.1	21.1	11.8
NT	Northern Territory University	20.0	22.6	53.8	36.4	32.4	32.4	42.6	41.3	32.6
	<i>State Sub-total</i>		20.0	22.6	53.8	36.4	32.4	32.4	42.6	41.3
ACT	Australian Defence Force Academy	0.0	0.0	0.0	0.0	0.0	0.0	33.3	0.0	0.0
	The Australian National University	21.3	20.4	8.9	15.8	9.2	14.8	10.4	10.2	8.9
	University of Canberra	14.7	15.2	17.5	22.4	18.2	22.4	16.1	27.3	15.7
	<i>State Sub-total</i>		17.2	17.1	13.9	19.5	15.1	18.7	14.6	20.7
Multi-State	Australian Catholic University	37.0	40.5	34.8	70.8	30.9	37.0	23.7	16.3	20.8
	<i>State Sub-total</i>		37.0	40.5	34.8	70.8	30.9	37.0	23.7	16.3
<b>Total</b>		<b>18.0</b>	<b>17.7</b>	<b>18.6</b>	<b>18.5</b>	<b>19.1</b>	<b>18.4</b>	<b>19.1</b>	<b>17.8</b>	<b>18.0</b>

Table 17b: Number of international commencing undergraduate students by State and Institution, 1994-2002

State	Institution	1994	1995	1996	1997	1998	1999	2000	2001	2002
NSW	Avondale College	15	19	24	19	24	21	40	36	60
	Charles Sturt University	248	317	495	567	781	1531	2330	1682	1088
	Macquarie University	153	142	239	144	253	451	631	777	763
	National Institute of Dramatic Art	0	3	0	0	3	1	1	0	2
	Southern Cross University	9	5	48	82	87	104	177	160	218
	The University of New England	52	46	48	57	41	57	133	145	260
	The University of New South Wales	631	700	843	987	981	1115	1238	1530	1135
	The University of Newcastle	178	212	272	338	242	232	248	334	414
	The University of Sydney	264	271	447	555	623	773	989	1067	1062
	University of Technology, Sydney	133	266	396	514	643	513	580	874	698
	University of Western Sydney	433	503	497	535	1048	1187	1609	1762	1718
	University of Wollongong	282	344	509	589	439	367	516	795	869
<i>State Sub-total</i>		2398	2828	3818	4387	5165	6352	8492	9162	8287
Victoria	Deakin University	257	313	730	836	914	728	791	894	694
	La Trobe University	168	161	373	519	410	469	574	668	375
	Monash University	1524	1751	2174	2535	2454	2936	3103	3592	2580
	Royal Melbourne Institute of Technology	1536	2017	2087	2297	2859	3301	3793	3922	2577
	Swinburne University of Technology	236	292	375	386	412	466	628	633	503
	The University of Melbourne	423	546	665	800	1205	1493	1686	1873	1957
	University of Ballarat	44	36	37	219	169	249	297	418	373
	Victoria University of Technology	832	516	541	651	725	1137	881	927	752
	<i>State Sub-total</i>	5020	5632	6982	8243	9148	10779	11753	12927	9811
Qld	Central Queensland University	160	218	547	579	771	1045	1657	2274	1651
	Griffith University	237	326	545	670	752	766	905	986	823
	James Cook University	99	118	115	133	218	258	349	428	360
	Queensland University of Technology	574	586	707	851	793	1033	1074	1285	1049
	The University of Queensland	152	281	305	370	411	556	783	938	801
	University of Southern Queensland	631	1235	1272	1448	1380	868	928	1035	918
	University of the Sunshine Coast	0	0	0	0	0	3	10	19	15
	<i>State Sub-total</i>	1853	2764	3491	4051	4325	4529	5706	6965	5617
WA	Curtin University of Technology	986	1235	1762	2215	2527	2579	2763	2963	1731
	Edith Cowan University	241	377	474	567	556	570	870	893	565
	Murdoch University	290	333	395	454	425	494	578	590	444
	The University of Notre Dame Australia	0	0	0	0	0	0	0	0	58
	The University of Western Australia	288	455	456	430	411	394	443	473	464
	<i>State Sub-total</i>	1805	2400	3087	3666	3919	4037	4654	4919	3262
SA	The Flinders University of South Australia	110	127	152	165	166	238	251	267	314
	The University of Adelaide	176	176	225	231	206	199	267	367	456
	University of South Australia	188	388	449	566	978	1227	1300	1714	791
	<i>State Sub-total</i>	474	691	826	962	1350	1664	1818	2348	1561
Tasmania	University of Tasmania	320	391	295	266	314	254	265	323	348
	<i>State Sub-total</i>	320	391	295	266	314	254	265	323	348
NT	Northern Territory University	20	31	26	22	37	37	61	46	43
	<i>State Sub-total</i>	20	31	26	22	37	37	61	46	43
ACT	Australian Defence Force Academy	7	4	5	6	8	7	6	6	6
	The Australian National University	127	142	124	95	76	122	135	226	281
	University of Canberra	156	210	194	161	187	170	298	377	249
	<i>State Sub-total</i>	290	356	323	262	271	299	439	609	536
Multi-State	Australian Catholic University	46	79	66	171	97	27	59	104	159
	<i>State Sub-total</i>	46	79	66	171	97	27	59	104	159
<b>Total</b>		<b>12226</b>	<b>15172</b>	<b>18914</b>	<b>22030</b>	<b>24626</b>	<b>27978</b>	<b>33247</b>	<b>37403</b>	<b>29624</b>

Table 18a: Crude student attrition rates for international postgraduate students by State and Institution, 1994-2002 (%)

State	Institution	1994	1995	1996	1997	1998	1999	2000	2001	2002
NSW	Avondale College	0.0	0.0	40.0	0.0	25.0	22.2	20.5	0.0	18.2
	Charles Sturt University	26.6	25.6	18.4	25.6	28.1	19.9	26.6	23.6	28.5
	Macquarie University	34.4	32.4	27.8	28.2	33.0	37.5	36.2	31.2	22.6
	Southern Cross University	60.0	48.8	36.0	26.9	18.8	31.6	37.7	48.6	36.8
	The University of New England	21.3	27.7	25.7	21.4	38.6	23.0	31.3	41.4	32.3
	The University of New South Wales	22.4	22.1	18.0	22.5	14.3	15.7	39.5	17.1	14.4
	The University of Newcastle	31.7	26.8	32.8	22.4	15.4	18.2	18.5	25.5	22.9
	The University of Sydney	25.7	23.6	26.5	21.2	25.4	32.4	20.3	24.1	23.4
	University of Technology, Sydney	14.1	10.2	11.1	12.7	16.8	14.7	17.2	22.5	20.7
	University of Western Sydney	27.0	14.6	22.5	16.3	20.6	28.7	22.1	30.5	19.9
	University of Wollongong	24.6	20.8	20.2	18.5	22.7	20.0	17.8	15.1	23.2
<i>State Sub-total</i>	25.5	23.3	22.2	21.6	22.1	23.3	27.3	24.2	22.0	
Victoria	Deakin University	22.7	31.6	40.4	33.3	34.9	28.5	13.6	17.5	23.8
	La Trobe University	28.1	33.9	31.9	20.0	14.8	27.7	24.3	21.0	23.7
	Melbourne College of Divinity	0.0	0.0	0.0	0.0	0.0	0.0	0.0	42.9	40.8
	Monash University	27.5	27.6	27.0	25.0	21.9	20.3	21.2	19.2	18.7
	Royal Melbourne Institute of Technology	22.5	18.7	20.3	17.2	32.4	20.1	23.6	24.3	26.8
	Swinburne University of Technology	69.8	52.3	21.6	29.3	19.5	37.6	25.6	38.9	33.5
	The University of Melbourne	31.1	27.2	27.6	25.3	18.1	23.9	18.1	18.3	16.7
	University of Ballarat	35.7	35.9	25.6	56.7	17.4	20.8	46.8	22.8	20.6
	Victoria University of Technology	39.8	51.2	27.2	20.5	20.6	18.8	25.7	23.4	26.6
	<i>State Sub-total</i>	30.4	30.2	26.5	23.0	23.9	23.0	22.6	23.1	23.2
Qld	Central Queensland University	28.6	31.7	32.9	26.1	25.1	25.8	22.9	21.3	21.1
	Griffith University	20.0	17.2	20.1	24.6	21.6	15.2	19.0	21.8	12.0
	James Cook University	34.4	29.7	34.0	31.7	28.8	26.8	32.1	26.0	19.8
	Queensland University of Technology	25.9	14.0	14.7	17.6	14.8	15.5	12.9	12.2	12.3
	The University of Queensland	27.0	19.6	19.0	25.1	23.0	21.5	18.6	18.2	18.1
	University of Southern Queensland	42.3	46.3	40.4	42.8	38.9	31.1	37.6	31.6	31.6
	University of the Sunshine Coast	0.0	0.0	0.0	0.0	0.0	0.0	55.6	17.1	31.7
	<i>State Sub-total</i>	28.5	24.5	24.5	27.1	24.6	22.6	23.7	22.0	20.7
WA	Curtin University of Technology	19.7	23.4	19.3	24.5	28.0	29.1	27.4	26.3	22.3
	Edith Cowan University	25.5	19.4	28.0	23.2	18.6	20.6	21.1	20.4	17.8
	Murdoch University	25.9	34.7	14.6	37.8	26.3	43.2	26.1	18.7	31.6
	The University of Notre Dame Australia	0.0	0.0	0.0	0.0	0.0	0.0	0.0	0.0	16.2
	The University of Western Australia	25.0	25.5	21.6	23.3	19.2	16.7	14.5	11.1	10.5
	<i>State Sub-total</i>	22.8	24.6	20.6	25.9	24.7	28.7	24.0	21.8	20.1
SA	The Flinders University of South Australia	26.8	19.3	21.2	24.7	22.7	25.0	14.3	18.5	31.6
	The University of Adelaide	15.2	24.3	21.3	23.2	27.8	21.5	22.9	19.8	20.0
	University of South Australia	63.8	43.5	34.8	16.0	19.6	17.2	16.9	13.3	21.0
	<i>State Sub-total</i>	36.3	31.2	27.3	19.4	21.9	19.1	17.7	15.0	22.0
Tasmania	University of Tasmania	29.7	28.6	19.7	24.6	20.2	24.0	13.4	19.8	27.9
	<i>State Sub-total</i>	29.7	28.6	19.7	24.6	20.2	24.0	13.4	19.8	27.9
NT	Northern Territory University	19.4	34.8	50.0	19.0	23.6	15.9	17.2	17.7	46.1
	<i>State Sub-total</i>	19.4	34.8	50.0	19.0	23.6	15.9	17.2	17.7	46.1
ACT	Australian Defence Force Academy	35.3	13.3	18.4	20.4	39.6	11.1	14.9	14.9	10.9
	The Australian National University	36.8	41.7	24.0	26.5	25.2	33.1	27.4	24.8	20.0
	University of Canberra	17.1	23.3	20.3	26.6	14.4	15.8	14.1	13.3	18.8
	<i>State Sub-total</i>	33.2	36.0	22.8	26.1	21.9	25.0	21.0	19.2	19.0
Multi-State	Australian Catholic University	9.1	10.5	31.5	25.7	75.2	59.8	47.9	34.1	25.7
	<i>State Sub-total</i>	9.1	10.5	31.5	25.7	75.2	59.8	47.9	34.1	25.7
<b>Total</b>		<b>28.1</b>	<b>26.4</b>	<b>23.9</b>	<b>23.3</b>	<b>23.4</b>	<b>23.6</b>	<b>24.5</b>	<b>22.5</b>	<b>21.9</b>

Table 18b: Number of international postgraduate students by State and Institution, 1994-2002

State	Institution	1994	1995	1996	1997	1998	1999	2000	2001	2002
NSW	Avondale College	0	0	5	6	8	9	39	27	11
	Charles Sturt University	331	332	386	446	477	1153	1713	1964	2441
	Macquarie University	567	816	962	1038	1074	1229	1546	2097	2175
	Southern Cross University	15	43	89	227	272	291	390	360	418
	The University of New England	319	347	292	281	319	230	345	372	508
	The University of New South Wales	1181	1263	1453	1775	1880	2223	2801	3128	3665
	The University of Newcastle	186	149	177	223	331	429	519	737	959
	The University of Sydney	556	647	732	866	1011	1122	1266	1489	1922
	University of Technology, Sydney	192	264	314	520	802	1146	1638	1693	2161
	University of Western Sydney	281	556	679	761	1018	1169	1816	2070	2167
	University of Wollongong	610	735	853	874	744	969	1300	1840	2634
<i>State Sub-total</i>	<i>4238</i>	<i>5152</i>	<i>5943</i>	<i>7017</i>	<i>7936</i>	<i>9970</i>	<i>13373</i>	<i>15778</i>	<i>19062</i>	
Victoria	Deakin University	185	209	312	243	261	239	345	737	961
	La Trobe University	185	251	260	300	378	466	530	851	1001
	Melbourne College of Divinity	0	0	0	0	0	0	0	35	49
	Monash University	612	644	651	693	718	1033	1584	2324	2971
	Royal Melbourne Institute of Technology	493	625	879	1122	1316	1485	1689	1858	2054
	Swinburne University of Technology	126	149	259	335	370	532	680	1081	1052
	The University of Melbourne	399	434	490	561	613	804	974	1213	1523
	University of Ballarat	14	39	43	60	46	72	47	311	763
	Victoria University of Technology	246	256	460	687	1076	1109	1156	1325	1487
<i>State Sub-total</i>	<i>2260</i>	<i>2607</i>	<i>3354</i>	<i>4001</i>	<i>4778</i>	<i>5740</i>	<i>7005</i>	<i>9735</i>	<i>11861</i>	
Qld	Central Queensland University	98	164	307	440	505	652	1120	2150	2676
	Griffith University	145	273	437	585	616	725	954	1090	1465
	James Cook University	151	145	150	142	163	194	196	200	242
	Queensland University of Technology	197	235	340	455	534	511	618	849	1051
	The University of Queensland	575	675	717	855	938	998	1003	1253	1533
	University of Southern Queensland	123	272	332	465	537	842	1098	1488	2103
	University of the Sunshine Coast	0	0	0	0	0	3	9	193	189
	<i>State Sub-total</i>	<i>1289</i>	<i>1764</i>	<i>2283</i>	<i>2942</i>	<i>3293</i>	<i>3925</i>	<i>4998</i>	<i>7239</i>	<i>9283</i>
WA	Curtin University of Technology	335	432	564	844	960	1349	1606	2190	2283
	Edith Cowan University	102	180	225	284	311	345	560	658	777
	Murdoch University	116	124	198	225	266	551	660	643	418
	The University of Notre Dame Australia	0	0	0	0	0	0	0	0	99
	The University of Western Australia	200	220	269	301	317	473	532	638	806
	<i>State Sub-total</i>	<i>753</i>	<i>956</i>	<i>1256</i>	<i>1654</i>	<i>1854</i>	<i>2718</i>	<i>3358</i>	<i>4129</i>	<i>4383</i>
SA	The Flinders University of South Australia	127	140	146	146	176	188	307	438	468
	The University of Adelaide	363	391	361	349	284	275	402	419	634
	University of South Australia	323	356	408	624	767	918	1455	2170	3015
	<i>State Sub-total</i>	<i>813</i>	<i>887</i>	<i>915</i>	<i>1119</i>	<i>1227</i>	<i>1381</i>	<i>2164</i>	<i>3027</i>	<i>4117</i>
Tasmania	University of Tasmania	175	175	122	114	114	125	112	131	140
	<i>State Sub-total</i>	<i>175</i>	<i>175</i>	<i>122</i>	<i>114</i>	<i>114</i>	<i>125</i>	<i>112</i>	<i>131</i>	<i>140</i>
NT	Northern Territory University	36	46	70	84	123	88	87	96	154
	<i>State Sub-total</i>	<i>36</i>	<i>46</i>	<i>70</i>	<i>84</i>	<i>123</i>	<i>88</i>	<i>87</i>	<i>96</i>	<i>154</i>
ACT	Australian Defence Force Academy	34	30	38	49	48	72	74	94	92
	The Australian National University	563	523	525	506	516	583	594	754	908
	University of Canberra	129	180	182	203	334	405	482	633	686
	<i>State Sub-total</i>	<i>726</i>	<i>733</i>	<i>745</i>	<i>758</i>	<i>898</i>	<i>1060</i>	<i>1150</i>	<i>1481</i>	<i>1686</i>
Multi-State	Australian Catholic University	33	19	54	74	109	87	73	167	334
	<i>State Sub-total</i>	<i>33</i>	<i>19</i>	<i>54</i>	<i>74</i>	<i>109</i>	<i>87</i>	<i>73</i>	<i>167</i>	<i>334</i>
<b>Total</b>		<b>10323</b>	<b>12339</b>	<b>14742</b>	<b>17763</b>	<b>20332</b>	<b>25094</b>	<b>32320</b>	<b>41783</b>	<b>51020</b>

Table 19a: Crude student attrition rates for international commencing postgraduate students by State and Institution, 1994-2002 (%)

State	Institution	1994	1995	1996	1997	1998	1999	2000	2002
NSW	Avondale College	0.0	0.0	40.0	0.0	33.3	0.0	23.5	28.6
	Charles Sturt University	37.5	32.5	20.7	24.2	34.8	19.4	27.1	26.7
	Macquarie University	27.1	28.7	26.5	26.6	30.9	39.7	38.2	14.6
	Southern Cross University	70.0	48.7	28.0	27.5	18.6	32.9	37.2	54.5
	The University of New England	21.6	30.5	21.9	19.0	43.0	21.9	40.7	26.7
	The University of New South Wales	21.4	19.9	15.1	17.9	11.1	11.9	40.1	14.5
	The University of Newcastle	22.6	10.6	17.9	14.9	14.1	18.1	18.6	22.3
	The University of Sydney	20.0	18.8	20.2	18.2	22.9	29.9	19.9	24.0
	University of Technology, Sydney	12.8	9.0	9.6	9.9	16.2	11.2	15.5	18.5
	University of Western Sydney	23.6	12.7	20.9	16.5	21.5	19.1	19.9	11.5
	University of Wollongong	19.7	14.2	16.9	17.5	22.0	17.8	18.2	16.9
	<i>State Sub-total</i>	22.9	20.1	19.1	18.8	20.8	20.5	27.2	19.2
Victoria	Deakin University	23.9	23.0	41.0	23.9	37.1	22.9	10.7	18.5
	La Trobe University	17.5	28.2	27.7	11.8	10.3	17.8	20.4	18.1
	Monash University	20.8	24.9	24.2	21.2	17.0	15.6	18.9	19.8
	Royal Melbourne Institute of Technology	22.4	15.1	14.9	14.6	26.8	19.4	21.2	25.1
	Swinburne University of Technology	70.7	53.2	23.0	27.0	17.1	33.5	23.7	28.1
	The University of Melbourne	26.6	21.5	22.3	20.6	13.4	19.1	15.0	10.3
	University of Ballarat	33.3	28.1	28.0	56.4	13.5	13.0	11.1	16.0
	Victoria University of Technology	51.9	54.8	30.5	21.6	19.0	17.8	22.0	27.1
		<i>State Sub-total</i>	29.5	27.6	24.6	20.4	19.7	19.6	19.5
Qld	Central Queensland University	22.1	31.5	31.6	28.1	25.3	24.8	20.6	22.1
	Griffith University	12.2	14.0	15.6	19.4	19.9	12.3	17.3	12.1
	James Cook University	20.0	16.7	24.6	21.2	25.5	28.0	26.2	12.2
	Queensland University of Technology	20.8	13.6	12.2	11.0	12.1	12.0	11.4	10.7
	The University of Queensland	13.3	10.0	9.0	21.0	13.6	11.8	14.3	9.9
	University of Southern Queensland	44.8	48.8	48.1	46.9	46.6	32.5	40.5	38.6
	University of the Sunshine Coast	0.0	0.0	0.0	0.0	0.0	0.0	62.5	4.3
		<i>State Sub-total</i>	20.4	21.4	21.6	25.0	22.6	19.5	21.9
WA	Curtin University of Technology	9.6	14.8	18.3	19.6	22.4	25.8	28.1	20.4
	Edith Cowan University	25.6	16.8	24.6	18.8	19.0	18.3	22.7	19.4
	Murdoch University	25.4	14.9	12.3	52.4	23.5	53.2	14.9	21.9
	The University of Notre Dame Australia	0.0	0.0	0.0	0.0	0.0	0.0	0.0	10.0
	The University of Western Australia	15.6	21.2	10.7	15.7	12.5	11.9	11.6	10.5
		<i>State Sub-total</i>	15.9	16.4	17.0	22.6	20.5	28.3	21.6
SA	The Flinders University of South Australia	10.6	9.0	21.9	11.8	17.2	21.6	9.2	15.3
	The University of Adelaide	7.6	13.2	16.7	8.4	14.8	13.7	19.7	17.2
	University of South Australia	68.2	45.9	19.0	13.0	18.1	17.6	14.8	18.0
		<i>State Sub-total</i>	39.2	31.2	18.6	11.5	17.4	17.4	14.7
Tasmania	University of Tasmania	24.2	26.5	17.8	3.6	10.0	15.9	5.6	26.2
		<i>State Sub-total</i>	24.2	26.5	17.8	3.6	10.0	15.9	5.6
NT	Northern Territory University	20.0	28.6	50.0	19.2	25.3	12.3	11.7	44.8
		<i>State Sub-total</i>	20.0	28.6	50.0	19.2	25.3	12.3	11.7
ACT	Australian Defence Force Academy	20.0	5.9	13.0	17.4	15.0	4.2	7.7	3.8
	The Australian National University	32.7	33.8	18.7	21.1	17.0	29.9	22.1	18.1
	University of Canberra	13.3	27.4	24.2	26.5	16.9	16.2	15.4	31.4
		<i>State Sub-total</i>	27.7	30.8	19.9	22.6	16.9	22.5	18.1
Multi-State	Australian Catholic University	0.0	13.3	28.6	26.1	84.5	69.0	47.5	14.2
		<i>State Sub-total</i>	0.0	13.3	28.6	26.1	84.5	69.0	47.5
<b>Total</b>		<b>24.9</b>	<b>23.1</b>	<b>20.9</b>	<b>20.4</b>	<b>20.9</b>	<b>21.1</b>	<b>23.0</b>	<b>19.7</b>

**Table 19b: Number of international commencing postgraduate students by State and Institution, 1994-2002**

State	Institution	1994	1995	1996	1997	1998	1999	2000	2002
NSW	Avondale College	0	0	5	3	3	5	34	7
	Charles Sturt University	168	166	237	298	247	883	956	574
	Macquarie University	380	519	555	594	592	806	1017	882
	Southern Cross University	10	39	75	160	199	210	328	220
	The University of New England	208	177	160	158	179	128	150	277
	The University of New South Wales	616	710	868	1109	1175	1470	1890	1444
	The University of Newcastle	84	66	78	134	220	265	361	457
	The University of Sydney	310	372	436	555	589	686	858	973
	University of Technology, Sydney	141	201	228	414	592	810	1128	1001
	University of Western Sydney	212	440	449	534	673	734	1314	793
	University of Wollongong	361	473	534	604	487	731	1004	1304
<i>State Sub-total</i>		2490	3163	3626	4563	4956	6728	9040	7933
Victoria	Deakin University	88	139	244	142	116	144	242	373
	La Trobe University	97	142	137	153	243	276	378	541
	Monash University	298	377	389	410	452	756	1128	1366
	Royal Melbourne Institute of Technology	286	391	498	677	783	902	1022	832
	Swinburne University of Technology	99	126	209	244	275	352	468	406
	The University of Melbourne	244	270	310	389	409	535	666	729
	University of Ballarat	12	32	25	55	37	46	9	405
	Victoria University of Technology	129	177	282	485	752	664	709	621
<i>State Sub-total</i>		1253	1654	2094	2555	3067	3675	4622	5282
Qld	Central Queensland University	68	111	228	335	367	436	840	1548
	Griffith University	82	150	276	386	412	521	663	675
	James Cook University	50	60	65	66	98	107	107	90
	Queensland University of Technology	130	169	230	308	346	333	437	458
	The University of Queensland	286	371	333	447	514	558	545	593
	University of Southern Queensland	105	211	210	337	339	563	644	897
	University of the Sunshine Coast	0	0	0	0	0	3	8	47
	<i>State Sub-total</i>		721	1072	1342	1879	2076	2521	3244
WA	Curtin University of Technology	208	284	398	597	666	938	932	732
	Edith Cowan University	78	125	134	197	189	262	415	217
	Murdoch University	59	67	138	124	115	393	496	137
	The University of Notre Dame Australia	0	0	0	0	0	0	0	40
	The University of Western Australia	96	104	149	166	168	294	327	334
	<i>State Sub-total</i>		441	580	819	1084	1138	1887	2170
SA	The Flinders University of South Australia	47	67	64	68	99	102	207	157
	The University of Adelaide	157	152	144	143	122	139	203	239
	University of South Australia	217	290	205	277	469	636	892	972
	<i>State Sub-total</i>		421	509	413	488	690	877	1302
Tasmania	University of Tasmania	95	83	45	28	30	44	36	61
	<i>State Sub-total</i>		95	83	45	28	30	44	36
NT	Northern Territory University	25	35	56	73	91	65	60	67
	<i>State Sub-total</i>		25	35	56	73	91	65	60
ACT	Australian Defence Force Academy	15	17	23	23	20	48	52	53
	The Australian National University	309	296	299	294	288	368	385	408
	University of Canberra	98	135	120	151	248	296	357	274
	<i>State Sub-total</i>		422	448	442	468	556	712	794
Multi-State	Australian Catholic University	29	15	49	46	84	71	59	162
	<i>State Sub-total</i>		29	15	49	46	84	71	59
<b>Total</b>		<b>5897</b>	<b>7559</b>	<b>8886</b>	<b>11184</b>	<b>12688</b>	<b>16580</b>	<b>21327</b>	<b>21383</b>

**Table 20: Crude student attrition rates for all domestic students 2001 - comparison of rates calculated using data at 31 March 2001 and Full Submission data**

State	Institution	Attrition rates (%)	
		31 March data	Full submission data
NSW	Australian Film, Television and Radio	3.3	3.3
	Avondale College	19.5	19.8
	Charles Sturt University	19.4	18.1
	Macquarie University	16.5	15.9
	National Institute of Dramatic Art	2.6	2.6
	Southern Cross University	32.0	28.9
	The University of New England	22.4	21.2
	The University of New South Wales	14.8	13.7
	The University of Newcastle	12.8	12.7
	The University of Sydney	12.6	12.1
	University of Technology, Sydney	21.4	20.4
	University of Western Sydney	23.7	19.8
	University of Wollongong	14.0	13.0
<i>State Sub-total</i>	<i>18.2</i>	<i>16.8</i>	
Victoria	Deakin University	19.7	19.3
	La Trobe University	17.1	16.8
	Marcus Oldham College	11.1	11.1
	Melbourne College of Divinity	35.5	35.5
	Monash University	15.6	15.0
	Royal Melbourne Institute of Technology	17.1	16.9
	Swinburne University of Technology	21.0	19.3
	The University of Melbourne	11.7	11.1
	University of Ballarat	19.8	19.2
	Victoria University of Technology	22.2	21.3
<i>State Sub-total</i>	<i>17.0</i>	<i>16.5</i>	
Qld	Bond University	7.7	5.6
	Central Queensland University	27.7	26.5
	Griffith University	26.7	25.1
	James Cook University	26.4	24.0
	Queensland University of Technology	17.2	15.8
	The University of Queensland	15.4	14.5
	University of Southern Queensland	26.4	23.5
	University of the Sunshine Coast	25.7	23.5
<i>State Sub-total</i>	<i>21.6</i>	<i>20.1</i>	
WA	Curtin University of Technology	19.2	18.4
	Edith Cowan University	21.8	19.1
	Murdoch University	17.7	17.1
	The University of Notre Dame Australia	28.9	30.0
	The University of Western Australia	13.6	13.0
	<i>State Sub-total</i>	<i>18.5</i>	<i>17.3</i>
SA	The Flinders University of South Australia	19.0	18.6
	The University of Adelaide	16.1	16.7
	University of South Australia	20.3	18.1
	<i>State Sub-total</i>	<i>18.8</i>	<i>17.8</i>
Tasmania	University of Tasmania	14.3	14.1
	<i>State Sub-total</i>	<i>14.3</i>	<i>14.1</i>
NT	Batchelor	46.5	43.0
	Northern Territory University	31.8	29.1
	<i>State Sub-total</i>	<i>33.2</i>	<i>30.6</i>
ACT	Australian Defence Force Academy	20.5	19.5
	The Australian National University	17.8	16.1
	University of Canberra	17.3	16.0
	<i>State Sub-total</i>	<i>17.8</i>	<i>16.4</i>
Multi-State	Australian Catholic University	16.5	16.1
	<i>State Sub-total</i>	<i>16.5</i>	<i>16.1</i>
<b>TOTAL</b>		<b>18.6</b>	<b>17.5</b>

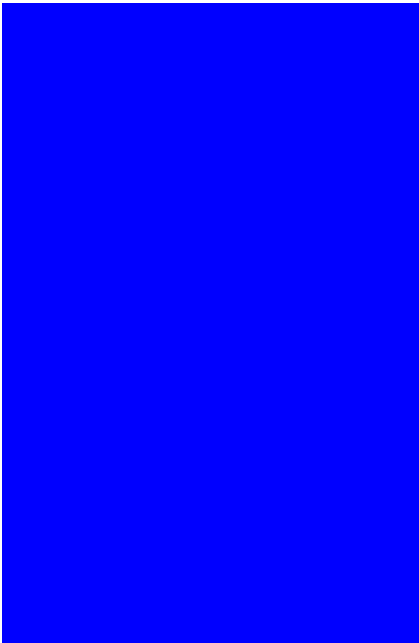
## Appendix 3: Detailed explanatory notes

### What do I need to know to interpret the Tables and Figures ?

- The sources for data in this report are the enrolment and completion files in the Higher Education Student Collection, DEST. Due to data availability, and for consistency over time, **enrolment data at 31 March** each year has been used rather than full submission data (for example, as published in the *Selected Higher Education Statistics 2002*). It should be noted that the use of 31 March data may result in slightly higher attrition rates than would be obtained by using the full submission data. A test on full submission data for all domestic students was undertaken to measure the extent of this effect. The results are provided in Table 20. The overall attrition rate for domestic students for 2001 using all submissions data was 17.5%, which is slightly lower than the rate calculated using the 31 March higher education data (18.6%). This should be taken into account when interpreting the results. The data excludes the Australian Maritime College, Open Learning Studies, other than major sole courses, Enabling, Cross-Institutional and Non-award courses.
- In **2002 a change was made to the definition of a commencing student**. In simple terms, prior to 2002 the count of students in a reference year included students who were enrolled in a course between 1 April of the year prior to the reference year and 31 March of the reference year. From 2002, the count includes those enrolled between 1 September of the year prior to the reference year and August 31 of the reference year. The calculation of first year attrition rates for 2001 and second year attrition rates for 2000 for commencing students may be affected by this change and are therefore not included in this paper. Care should also be taken in comparing the rates for the years prior to 2001 with rates for 2002 as the population of commencing students is not identical.
- Most of the tables provide **first year crude attrition rates**. This measures the proportion of students in a year who neither graduate nor continue studying at the same institution in the following year. For example, the 2002 figure refers to the proportion of 2002 students who neither graduate nor continue studying at the same university in 2003. Students who enrol at another institution in the following year will be counted in those that have 'dropped out', as will those that deferred.
- For commencing undergraduate students, and commencing undergraduate 'new to higher education' and 'not new to higher education' students, **second year crude attrition rates** have also been calculated. The crude attrition rate for the second year measures the proportion of students in a

year who neither graduate nor continue studying at the same institution in the year after the following year. For example, the 2001 figure refers to the proportion of 2001 students who neither graduated in 2001 or 2002 nor are enrolled at the same university in 2003.

- The calculation of attrition rates involves matching administrative data from a number of different files from one year to another. Whilst all care has been taken to ensure that the matching is undertaken accurately, it is possible that some changes in the administrative data of some institutions have not been accounted for. This may result in some anomalies in attrition rates from one year to another at the institution level. In addition, small numbers at some institutions may lead to variability in the calculated rates. As a result, **care should be taken in comparing rates from one year to another at the institution level.**
- The categories of students used in the tables (such as domestic commencing undergraduates, international students, etc) are not homogenous, being made up of different sub-populations in varying proportions. These sub-populations may very well have different attrition rates, due to different characteristics, study patterns and so on. Unfortunately, it is not possible to disaggregate the groups further in this paper (for example to look at attrition rates of overseas students who reside in Australia and those that reside overseas). However, when interpreting the rates, it should be borne in mind that the **aggregate attrition rate may not provide the whole picture.** It should also be borne in mind that a change in the student mix may result in changes in the attrition rates at an aggregate level over time.
- **Only award courses are included** in the calculations of attrition rates. Students undertaking enabling or non-award courses are not included. For example, if a student leaves a Bachelor course in one year and starts an Enabling course or Non-award course the following year, the student would be counted as part of the attrition. However, if the student left a Bachelor course and enrolled the next year at the same institution in a Postgraduate course or in any award course then he would not be counted as attrition.
- A student is classified as a **commencing student** in relation to a particular course. A commencing student is one who has enrolled for the first time to undertake a particular higher education course at a particular higher education institution in the reference year.
- **New to higher education** refers to those commencing undergraduate students who have never commenced a higher education course prior to the first enrolment in the current course.
- **School leavers** are defined as students who completed their final year of secondary education in the previous year or the year prior to the previous year. For example, 2002 school



leavers are defined as students who commenced at the university in 2002 and completed their final year of secondary education in 2000 or 2001. The variable used to identify school leavers is 'a prior secondary education course at school' (e365). It does not include those who completed secondary education at a TAFE.

- The **age of a student** is calculated at 31 December in the year prior to the reference year. For example for 2002 students, age is calculated at 31 Dec 2001.
- Citizenship and residence status are used to determine if the student is considered to be a '**domestic**' **student or an overseas (or international) student**. Domestic students include those who are Australian citizens, New Zealand citizens and students with permanent resident status. Overseas students are the remainder.