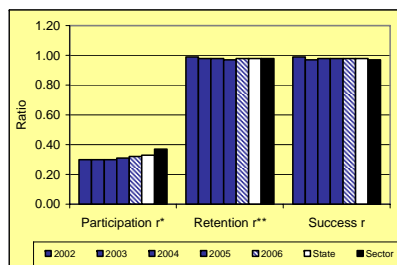
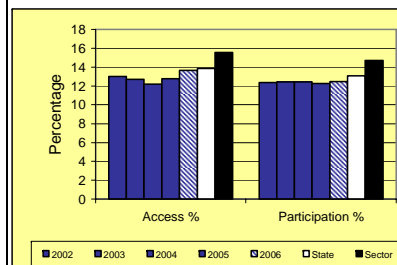


## Curtin University of Technology

### Equity Performance Indicators 2002 to 2006

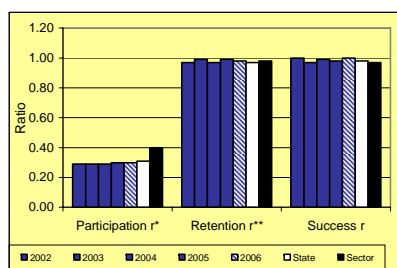
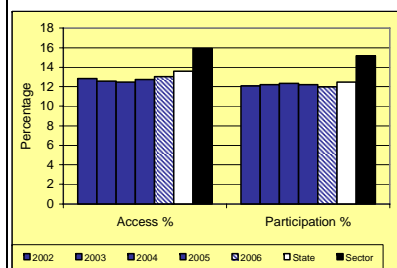
#### Low SES (all ages)



Year	2002	2003	2004	2005	2006	State 06	NAT 06
Access %	13.03	12.70	12.20	12.78	13.66	13.88	15.55
Participation %	12.38	12.46	12.43	12.28	12.47	13.09	14.72
Participation r*	0.30	0.30	0.30	0.31	0.32	0.33	0.37
Retention r**	0.99	0.98	0.98	0.97	0.98	0.98	0.98
Success r	0.99	0.97	0.98	0.98	0.98	0.98	0.97

% = rate  
r = ratio  
\*Reference value revised. For detail see glossary  
\*\*Retention is the number of domestic students who re-enrol at an institution in a given year, as a proportion of students who were enrolled in the previous year less those who completed their course.

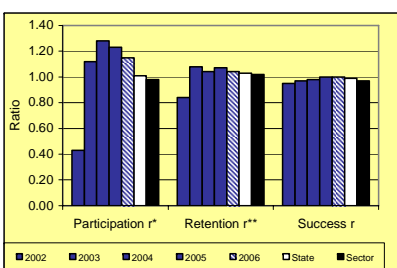
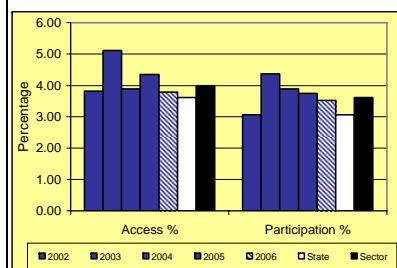
#### Low SES (under 25)



Year	2002	2003	2004	2005	2006	State 06	NAT 06
Access %	12.86	12.57	12.47	12.74	13.04	13.58	15.91
Participation %	12.09	12.22	12.36	12.21	11.97	12.47	15.17
Participation r*	0.29	0.29	0.29	0.30	0.30	0.31	0.40
Retention r**	0.97	0.99	0.97	0.99	0.98	0.97	0.98
Success r	1.00	0.97	0.99	0.98	1.00	0.98	0.97

% = rate  
r = ratio  
\*Reference value revised. For detail see glossary  
\*\*Retention is the number of domestic students who re-enrol at an institution in a given year, as a proportion of students who were enrolled in the previous year less those who completed their course.

#### Non-English Speaking Background



Year	2002	2003	2004	2005	2006	State 06	NAT 06
Access %	3.82	5.11	3.89	4.35	3.79	3.62	3.99
Participation %	3.07	4.37	3.89	3.75	3.52	3.07	3.61
Participation r*	0.43	1.12	1.28	1.23	1.15	1.01	0.98
Retention r**	0.84	1.08	1.04	1.07	1.04	1.03	1.02
Success r	0.95	0.97	0.98	1.00	1.00	0.99	0.97

% = rate  
r = ratio  
\*Reference value revised. For detail see glossary  
\*\*Retention is the number of domestic students who re-enrol at an institution in a given year, as a proportion of students who were enrolled in the previous year less those who completed their course.

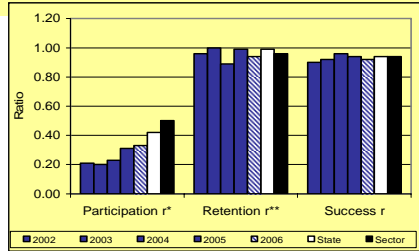
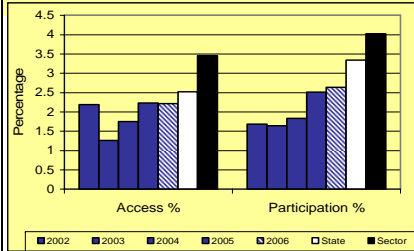
Equity performance indicators have been calculated, using the following parameters:

- domestic student enrolments, excluding students whose permanent home address is overseas
- 'full year' data, that is, students enrolled either from 1 September of the previous year to 31 August of the current year (2002-2004), or for the calendar year 1 January - 31 December (2005-2006)
- students enrolled at Table A institutions only
- students from low socio-economic status (SES) backgrounds are those whose permanent home address postcode falls within the lowest 25 percent of postcodes as coded to the ABS SEIFA Index of Education and Occupation (2001 census)

Regional and remote participation ratios are not calculated for Higher Education providers in the ACT due to the distortion to ratios caused by regional and remote students from outside ACT.

**Curtin University of Technology**  
**Equity Performance Indicators 2002 to 2006**

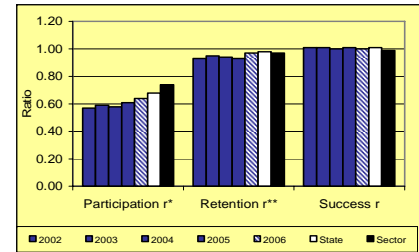
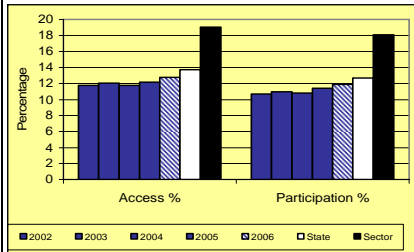
**Disability**



Year	2002	2003	2004	2005	2006	State 06	NAT 06
Access %	2.19	1.26	1.75	2.23	2.21	2.52	3.46
Participation %	1.68	1.64	1.83	2.51	2.64	3.34	4.02
Participation r*	0.21	0.20	0.23	0.31	0.33	0.42	0.50
Retention r**	0.96	1.00	0.89	0.99	0.94	0.99	0.96
Success r	0.90	0.92	0.96	0.94	0.92	0.94	0.94

% = rate  
r = ratio  
\*Reference value revised. For detail see glossary  
\*\*Retention is the number of domestic students who re-enrol at an institution in a given year, as a proportion of students who were enrolled in the previous year less those who completed their course.

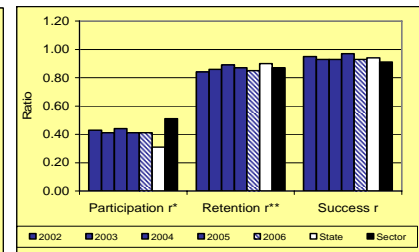
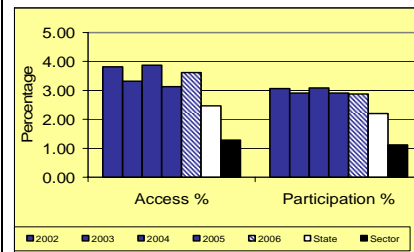
**Regional**



Year	2002	2003	2004	2005	2006	State 06	NAT 06
Access %	11.76	12.06	11.77	12.18	12.79	13.74	19.02
Participation %	10.68	10.99	10.83	11.40	11.89	12.70	18.10
Participation r*	0.57	0.59	0.58	0.61	0.64	0.68	0.74
Retention r**	0.93	0.95	0.94	0.93	0.97	0.98	0.97
Success r	1.01	1.01	1.00	1.01	1.00	1.01	0.99

% = rate  
r = ratio  
\*Reference value revised. For detail see glossary  
\*\*Retention is the number of domestic students who re-enrol at an institution in a given year, as a proportion of students who were enrolled in the previous year less those who completed their course.

**Remote**



Year	2002	2003	2004	2005	2006	State 06	NAT 06
Access %	3.82	3.32	3.87	3.13	3.62	2.47	1.29
Participation %	3.07	2.91	3.09	2.91	2.88	2.21	1.12
Participation r*	0.43	0.41	0.44	0.41	0.41	0.31	0.51
Retention r**	0.84	0.86	0.89	0.87	0.85	0.90	0.87
Success r	0.95	0.93	0.93	0.97	0.93	0.94	0.91

% = rate  
r = ratio  
\*Reference value revised. For detail see glossary  
\*\*Retention is the number of domestic students who re-enrol at an institution in a given year, as a proportion of students who were enrolled in the previous year less those who completed their course.

Equity performance indicators have been calculated, using the following parameters:

- (a) domestic student enrolments, excluding students whose permanent home address is overseas
- (b) 'full year' data, that is, students enrolled either from 1 September of the previous year to 31 August of the current year (2002-2004), or for the calendar year 1 January - 31 December (2005-2006)
- (c) students enrolled at Table A institutions only
- (d) students from low socio-economic status (SES) backgrounds are those whose permanent home address postcode falls within the lowest 25 percent of postcodes as coded to the ABS SEIFA Index of Education and Occupation (2001 census)

Regional and remote participation ratios are not calculated for Higher Education providers in the ACT due to the distortion to ratios caused by regional and remote students from outside ACT.