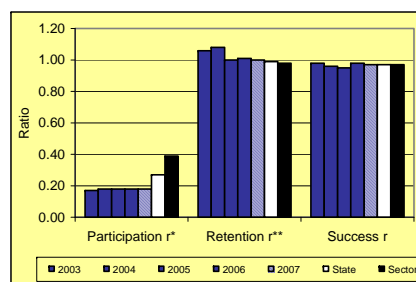
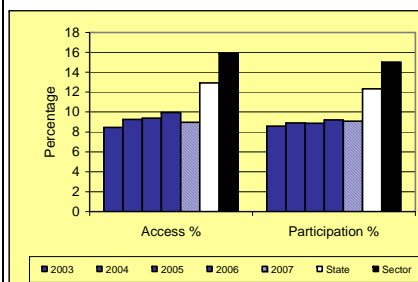


Swinburne University
Equity Performance Indicators 2003 to 2007

Low SES (all ages)

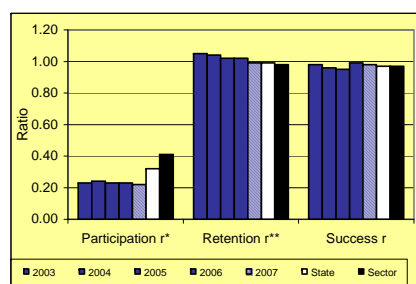
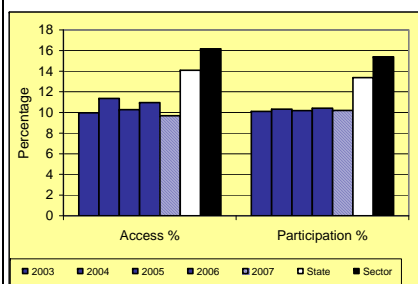


Year	2003	2004	2005	2006	2007	State 07	NAT 07
Access %	8.46	9.26	9.40	9.95	8.96	12.93	15.92
Participation %	8.59	8.91	8.86	9.21	9.09	12.33	15.02
Participation r*	0.17	0.18	0.18	0.18	0.18	0.27	0.39
Retention r**	1.06	1.08	1.00	1.01	1.00	0.99	0.98

	State 07	NAT 07
Success r	0.97	0.97

% = rate
r = ratio
*Reference value revised. For detail see glossary
**Retention is the number of domestic students who re-enrol at an institution in a given year, as a proportion of students who were enrolled in the previous year less those who completed their course.

Low SES (under 25)

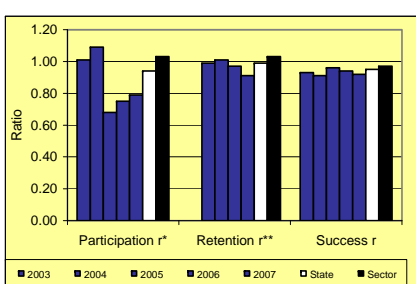
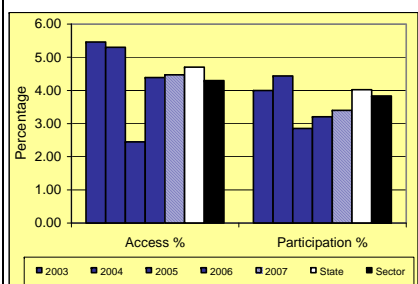


Year	2003	2004	2005	2006	2007	State 07	NAT 07
Access %	9.96	11.35	10.28	10.96	9.68	14.09	16.18
Participation %	10.11	10.31	10.17	10.42	10.19	13.39	15.39
Participation r*	0.23	0.24	0.23	0.23	0.22	0.32	0.41
Retention r**	1.05	1.04	1.02	1.02	0.99	0.99	0.98

	State 07	NAT 07
Success r	0.97	0.97

% = rate
r = ratio
*Reference value revised. For detail see glossary
**Retention is the number of domestic students who re-enrol at an institution in a given year, as a proportion of students who were enrolled in the previous year less those who completed their course.

Non-English Speaking Background



Year	2003	2004	2005	2006	2007	State 07	NAT 07
Access %	5.46	5.30	2.45	4.39	4.47	4.70	4.30
Participation %	4.00	4.44	2.85	3.21	3.40	4.02	3.83
Participation r*	1.01	1.09	0.68	0.75	0.79	0.94	1.03
Retention r**	n/a	0.99	1.01	0.97	0.91	0.99	1.03

	State 07	NAT 07
Success r	0.95	0.97

% = rate
r = ratio
*Reference value revised. For detail see glossary
**Retention is the number of domestic students who re-enrol at an institution in a given year, as a proportion of students who were enrolled in the previous year less those who completed their course.

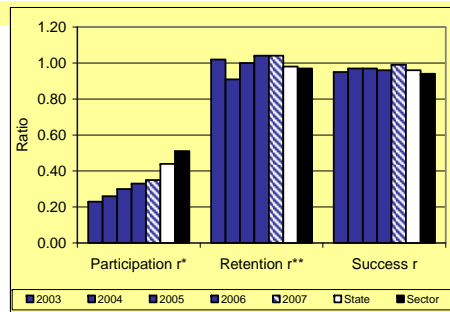
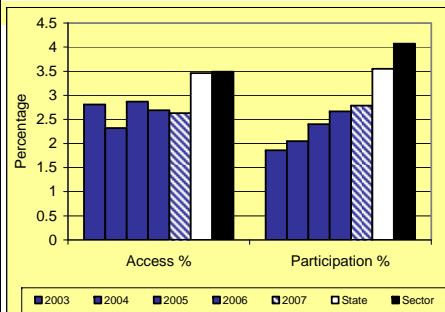
Equity performance indicators have been calculated, using the following parameters:

- (a) domestic student enrolments, excluding students whose permanent home address is overseas
- (b) 'full year' data, that is, students enrolled either from 1 September of the previous year to 31 August of the current year (2003-2004), or for the calendar year 1 January - 31 December (2007)
- (c) students enrolled at Table A institutions only
- (d) students from low socio-economic status (SES) backgrounds are those whose permanent home address postcode falls within the lowest 25 percent of postcodes as coded to the ABS SEIFA Index of Education and Occupation (2006 census)

Regional and remote participation ratios are not calculated for Higher Education providers in the ACT due to the distortion to ratios caused by regional and remote students from outside ACT.

**Swinburne University
Equity Performance Indicators 2003 to 2007**

Disability

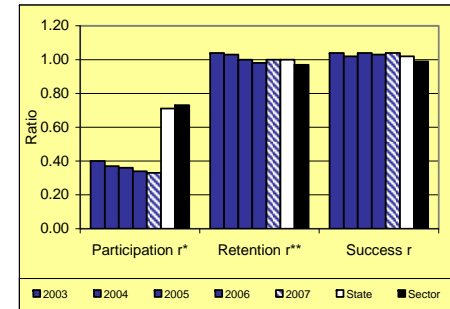
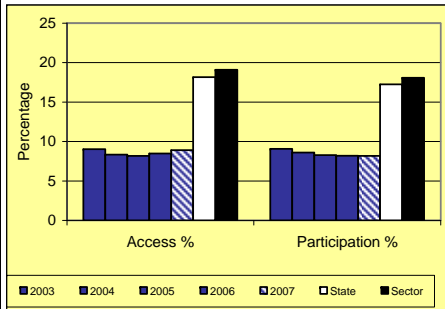


Year	2003	2004	2005	2006	2007	State 07	NAT 07
Access %	2.81	2.32	2.87	2.69	2.63	3.46	3.49
Participation %	1.86	2.05	2.40	2.67	2.79	3.55	4.07
Participation r*	0.23	0.26	0.30	0.33	0.35	0.44	0.51
Retention r**	1.02	0.91	1.00	1.04	1.04	0.98	0.97

	State 07	NAT 07
Success r	0.96	0.94

% = rate
r = ratio
*Reference value revised. For detail see glossary
**Retention is the number of domestic students who re-enrol at an institution in a given year, as a proportion of students who were enrolled in the previous year less those who completed their course.

Regional

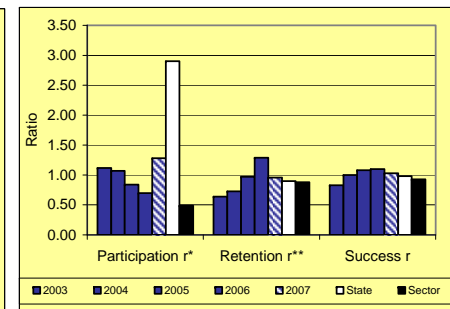
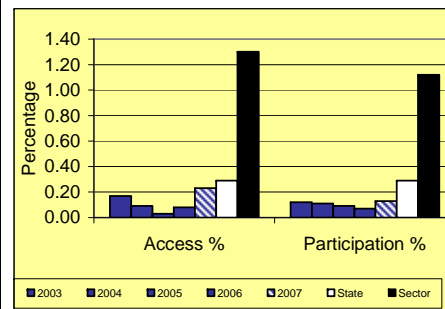


Year	2003	2004	2005	2006	2007	State 07	NAT 07
Access %	9.03	8.35	8.17	8.48	8.90	18.14	19.07
Participation %	9.07	8.59	8.29	8.19	8.17	17.24	18.08
Participation r*	0.40	0.37	0.36	0.34	0.33	0.71	0.73
Retention r**	1.04	1.03	1.00	0.98	1.00	1.00	0.97

	State 07	NAT 07
Success r	1.02	0.99

% = rate
r = ratio
*Reference value revised. For detail see glossary
**Retention is the number of domestic students who re-enrol at an institution in a given year, as a proportion of students who were enrolled in the previous year less those who completed their course.

Remote



Year	2003	2004	2005	2006	2007	State 07	NAT 07
Access %	0.17	0.09	0.03	0.08	0.23	0.29	1.30
Participation %	1.12	1.07	0.84	0.70	1.28	0.90	0.88
Participation r*	1.12	1.07	0.84	0.70	1.28	2.90	0.49
Retention r**	0.64	0.73	0.97	1.29	0.96	0.90	0.88

	State 07	NAT 07
Success r	0.98	0.93

% = rate
r = ratio
*Reference value revised. For detail see glossary
**Retention is the number of domestic students who re-enrol at an institution in a given year, as a proportion of students who were enrolled in the previous year less those who completed their course.

Equity performance indicators have been calculated, using the following parameters:

- domestic student enrolments, excluding students whose permanent home address is overseas
- 'full year' data, that is, students enrolled either from 1 September of the previous year to 31 August of the current year (2003-2004), or for the calendar year 1 January - 31 December (2007)
- students enrolled at Table A institutions only
- students from low socio-economic status (SES) backgrounds are those whose permanent home address postcode falls within the lowest 25 percent of postcodes as coded to the ABS SEIFA Index of Education and Occupation (2006 census)

Regional and remote participation ratios are not calculated for Higher Education providers in the ACT due to the distortion to ratios caused by regional and remote students from outside ACT.