

DEPARTMENT OF EDUCATION, TRAINING AND  
YOUTH AFFAIRS

EDUCATION  
PARTICIPATION RATES,  
AUSTRALIA - 1997

---

EDUCATIONAL INDICATORS  
AND ANALYSIS SECTION

RESEARCH AND EVALUATION BRANCH



# Education Participation Rates, Australia – 1997

---

RELEASED AUGUST 1999

---

PHILIP EVERINGHAM  
EDUCATIONAL INDICATORS  
AND ANALYSIS SECTION

RESEARCH AND EVALUATION BRANCH

© Commonwealth of Australia, 1999

ISBN 0 642 23839 1

This work is copyright. You may download, display, print and reproduce this material in unaltered form only (retaining this notice) for your personal, non-commercial use or use within your organisation. All other rights are reserved. Requests and inquiries concerning reproduction and rights should be addressed to the Manager, Legislative Services, AusInfo, GPO Box 1920, Canberra ACT 2601 or by e-mail [Cwealthcopyright@dofa.gov.au](mailto:Cwealthcopyright@dofa.gov.au).

Note: Copyright in ABS data resides with the Commonwealth of Australia. Used with permission.

---

## CONTENTS

---

LIST OF ABBREVIATIONS AND OTHER USAGES	VI
INTRODUCTION	1
KEY FINDINGS	1
COVERAGE	2
PARTICIPATION IN EDUCATION	3
EDUCATIONAL ATTAINMENT, 1982-1998	6
SUMMARY TABLES, AUSTRALIA	9
Table 1. Education participation rates, by sex, 1997: Summary table (including VET courses of 200+ hours only)	9
Table 2. Education participation rates, by sex, 1997: Summary table (including VET courses of 50+ hours)	10
Table 3. Education participation rates, by sex, 1997: Summary table (excluding recreational courses)	11
SUMMARY TABLES, STATES AND TERRITORIES	12
Table 4. Education participation rates, by State and Territory, 1997: Summary table (including VET courses of 200+ hours only)	12
Table 5. Education participation rates, by State and Territory, 1997: Summary table (including VET courses of 50+ hours)	13
Table 6. Education participation rates, by State and Territory, 1997: Summary table (including VET courses of 0+ hours (any duration))	14
TIME SERIES	15
Table 7. Education participation rates, 1985-1997: Time series table [note that this table includes a combination of administrative and survey data]	15
INTERNATIONAL COMPARISONS	19
Table 8. Participation in formal education, 1995: International comparisons	19
Table 9. Participation in education, 1996: International comparisons	20

SCHOOL SECTOR	21
Table 10. School participation rates, by year (1985, 1989-1997)	21
Table 11. Apparent school retention rates, by year (1985-1997)	22
Table 12. School participation rates, 1985	23
Table 13. School participation rates, 1990	24
Table 14. School participation rates, 1995	25
Table 15. School participation rates, 1996	26
Table 16. School participation rates, 1997	27
PUBLICLY FUNDED VOCATIONAL EDUCATION AND TRAINING (VET) SECTOR	28
Table 17. Publicly funded VET participation rates, by year (1985, 1990, 1995, 1996, 1997)	28
Table 18. Publicly funded VET (TAFE) participation rates, 1985	29
Table 19. Publicly funded VET (TAFE) participation rates, 1990	30
Table 20. Publicly funded VET participation rates, 1995	31
Table 21. Publicly funded VET participation rates, 1996	32
Table 22. Publicly funded VET participation rates, 1997 (courses of 200+ hours only)	33
Table 23. Publicly funded VET participation rates, 1997 (courses of 50+ hours only)	34
Table 24. Publicly funded VET participation rates, 1997 (VET courses of any duration, ie. 0+ hours)	35
HIGHER EDUCATION SECTOR	36
Table 25. Higher education participation, 1985	36
Table 26. Higher education participation, 1990	37
Table 27. Higher education participation, 1995	38
Table 28. Higher education participation, 1996	39
Table 29. Higher education participation, 1997	40
Table 30. Higher education participation rates, by year (1985, 1990, 1995, 1996, 1997)	41
Table 31. Full-time higher education participation, 1997	42
Table 32. Part-time higher education participation, 1997	43

Table 33. External higher education participation, 1997	44
TRAINING	45
Table 34. Participation in education and training by 15-64 year olds, 1997	45
EDUCATIONAL ATTAINMENT	46
Table 35. Educational attainment of persons aged 15-64 years, May 1997	46
Table 36. Highest level of educational attainment of the population	47
DATA SOURCES AND METHODS	48
CAVEATS	50
GLOSSARY	52

**Inquiries**

For further information about these and related statistics, contact Philip Everingham on (02) 6240 5496.

---

## LIST OF ABBREVIATIONS AND OTHER USAGES

---

ABS	Australian Bureau of Statistics
ABSCQ	Australian Bureau of Statistics Classification of Qualifications
AIEF	Australian International Education Foundation
ANTA	Australian National Training Authority.
CTEC	Commonwealth Tertiary Education Commission
DEET	Department of Employment, Education and Training
DEETYA	Department of Employment, Education, Training and Youth Affairs
DETYA	Department of Education, Training and Youth Affairs
EFTSU	Equivalent Full-Time Student Unit
ERP	Estimated Resident Population
FTE	Full-Time Equivalent
HECS	Higher Education Contribution Scheme
NCVER	National Centre for Vocational Education Research
RPL	Recognition of Prior Learning
TAFE	Technical and Further Education
VET	Vocational Education and Training

Because figures have been rounded, discrepancies may occur between the sums of the component items and totals.

An explanation of the symbols used in the publication is provided below:

n.a.	not available
n.p.	not published
..	not applicable
r	revised
**	these estimates are subject to sampling variability too high for most practical purposes, and have been suppressed

---

## INTRODUCTION

---

This publication provides information on participation rates for three sectors of education in Australia (schools, vocational education and training (VET) and higher education), as well as data on the educational attainment of the population. Rates of participation in preschools have not been calculated due to difficulties with the available data.

A participation rate “in any group for a given activity is the number of people taking part in the activity expressed as a percentage of the [estimated resident] population of the group”<sup>1</sup> For example, a higher education participation rate for 15-19 year olds, of 10.0 per cent in 1978 would mean that ten of every one hundred 15-19 year olds were participating in higher education in that year.

The commentary provides details of trends in educational participation rates and in the educational attainment of the population over 1985-1997, and 1982-1998 respectively.

---

## KEY FINDINGS

---

Key findings include:

### **Participation in education**

- In 1997, 20.9 per cent of 15-64 year olds participated in education in Australia.
- The proportion of five year olds in school appears to have declined from 81.1 per cent in 1985, to 71.6 per cent in 1997. This may be due to parents waiting longer to enrol children at school, and school enrolment policies.
- The rate of participation in school by 17 year olds rose from 38.0 per cent in 1985 to 60.6 per cent in 1993, and has since fluctuated around 60 per cent.
- Participation in school amongst 15-19 year olds rose from 41.3 per cent in 1985, to 49.5 per cent in 1997. In 1997, amongst 15-19 year olds, 49.5 per cent were in school, 17.9 per cent were in TAFE, 1.2 per cent were in other (non-TAFE) VET, and 10.7 per cent were in higher education. Thus, of all 15-19 year olds, 79.4 per cent were participating in education.
- Total VET (TAFE plus other) participation rose from 13.9 per cent of 20-24 year olds in 1985, to 17.4 per cent in 1997. Participation of 15-19 year olds, however, fell from 21.8 per cent to 19.1 per cent, mainly due to a decline in TAFE participation amongst 16 and 17 year olds. Overall, total VET participation rose from 9.1 per cent of the 15-64 year old population in 1985 to 10.8 per cent in 1997.
- TAFE participation rates have remained relatively stable for the 15-64 year old population. Participation among 15-19 year olds, however, declined slightly between 1985 and 1997 (from 20.5 per cent to 17.9 per cent), while participation by 20-24 year olds has increased (from 12.7 per cent to 14.9 per cent).

---

<sup>1</sup> p.148, ABS. (1999). *Education and Training in Australia, 1998*. (Cat. No. 4224.0). Belconnen, ACT: ABS.

- Higher education participation has increased for all age groups, but the rise has been most dramatic amongst younger age groups. The participation rate of 15-19 year olds in higher education increased from 6.5 per cent to 10.7 per cent between 1985 and 1997, and that of 20-24 year olds rose from 9.1 per cent to 15.0 per cent.
- Participation varied by sex. Amongst 18 year old females, 28.2 per cent were in higher education, and 17.7 per cent were in VET courses of at least 200 hours. In contrast, only 19.3 per cent of 18 year old males were in higher education, with 23.9 per cent in VET courses of at least 200 hours.

### **Educational attainment**

- The proportion of the population with bachelor degrees or higher has risen, from 5.8 per cent of 15+ year olds in 1982, to 14.3 per cent of 15-64 year olds in 1998. The rate of increase has become more rapid since about 1987.
- The proportion of the population that left school before Year 12 and has no post-school qualifications has been steadily declining since 1982, from 53.4 per cent of all persons aged 15+ years to 34.2 per cent of all 15-64 year olds in 1998.
- The proportion of the population still at school has risen since 1982 (from 3.7 per cent of 15+ year olds in 1982, to 5.4 per cent of 15-64 year olds in 1998), with most of the increase between 1983 and 1988.

---

## **COVERAGE**

---

The tables in this publication are based on institutional collections and Australian Bureau of Statistics (ABS) estimated resident population data, except that data for other VET in Table 7 are derived from the ABS' *Transition From Education to Work* survey. National Centre for Vocational Education Research (NCVER) data for all VET are affected by changes in scope over time. For this reason, Table 7 uses administrative (NCVER) data on TAFE, and ABS survey data on other (non-TAFE) VET. NCVER data used cover vocational courses, but exclude recreational courses (Stream 1000 courses).

### **Coverage of the non-government and private sectors**

#### **Schools**

Students in non-government schools are included throughout the publication. Separate estimates of government and non-government school students, however, are not given.

#### **VET**

Estimates of student numbers in private VET are given in the footnotes to those tables which only include public VET.

#### **Higher education**

The small number of students in private higher education institutions, despite being excluded from the institutional data which are given for that sector, would not affect participation rates if an estimate of them was included. Few reliable data are available on private VET and private higher education.

Growth in private education over time can be estimated using ABS surveys and the population census. Data suggest that growth in participation in private VET has added less than one percentage point to participation rates of 15-64 year olds between 1990 and 1997. (Growth in

participation rates has been gradual because private VET students are a very small percentage of total VET students, and participation in VET is much less than in schools. Furthermore, participation in VET is increasingly rivalled by participation in higher education, which is more dominated by public providers than the VET sector.)

Time series data which include private education are given in Table 7 of the publication.

---

## PARTICIPATION IN EDUCATION

---

**Rates of participation in education for the population as a whole** have remained stable over the period 1985-1997. Participation by younger age groups, however, has increased substantially, offsetting the effects of the changing age structure of the population. For example, the rate of educational participation by 15-19 year olds has grown from 69.6 per cent in 1985 to 79.4 per cent in 1997 and that of 20-24 year olds has increased from 23.3 per cent to 32.8 per cent. There have also been significant changes in participation by sector, particularly among younger age groups. Participation in school by 16-18 year olds and participation in higher education have increased markedly. Participation in VET has remained relatively constant. Peak ages for participation are 16 and 17 year olds in post-compulsory schooling, 18 year olds in TAFE, and 19 year olds in higher education.

Australia has a relatively high proportion of students in part-time education, and despite youth participation in education being high over the last decade, educational attainment of the overall population is expected to remain stable compared to other OECD countries.<sup>2</sup>

Rates of **school participation** by 16-18 year olds rose between 1985 and the early 1990s and have since plateaued. The rate of participation in school by 17 year olds rose from 38.0 per cent in 1985 to 60.6 per cent in 1993, and has since fluctuated around 60 per cent. The proportion of five year olds in school appears to have declined from 81.1 per cent in 1985, to 71.6 per cent in 1997. Officials from State Government education departments suggest that this is due to parents waiting longer to enrol children (especially boys) at school. It may also be due to school enrolment and State and Territory Government policies.<sup>3</sup>

School participation rates of 18 and 19 year olds are lower than those of 16 and 17 year olds because a significant proportion of students in the older age groups has already graduated. As would be expected, since students are required by law to be in school up to the age of 15 years in all States,<sup>4</sup> participation of 7-14 year olds approaches 100 per cent. For example, the participation rate of 14 year olds is 97.5 per cent.<sup>5</sup> However, participation appears to be falling by 15 years of age (at 92.6 per cent). Canada's experience suggests other countries besides Australia have difficulty retaining all students in the final compulsory year.<sup>6</sup>

---

2 McKenzie, P., Lamb, S., and Long, M. (1998). *Participation in Post-School Education and Training in Australia*. ACER presentation to DETYA, Canberra. Unpublished. See also Table C1.1, p.159; Chart C2.2, p.166; Table C2.1, p.169; and Table C3.2, p.184. OECD. (1998). *Education at a Glance: OECD Indicators, 1998*. Paris: OECD.

3 There were 18,858 18 and 19 year old males in school in 1997, compared to only 16,238 females, despite females' higher retention and participation rates (Table 47, p.61, ABS. (1998). *Schools, Australia, 1997*. (Cat. No. 4221.0). Belconnen, ACT: ABS).

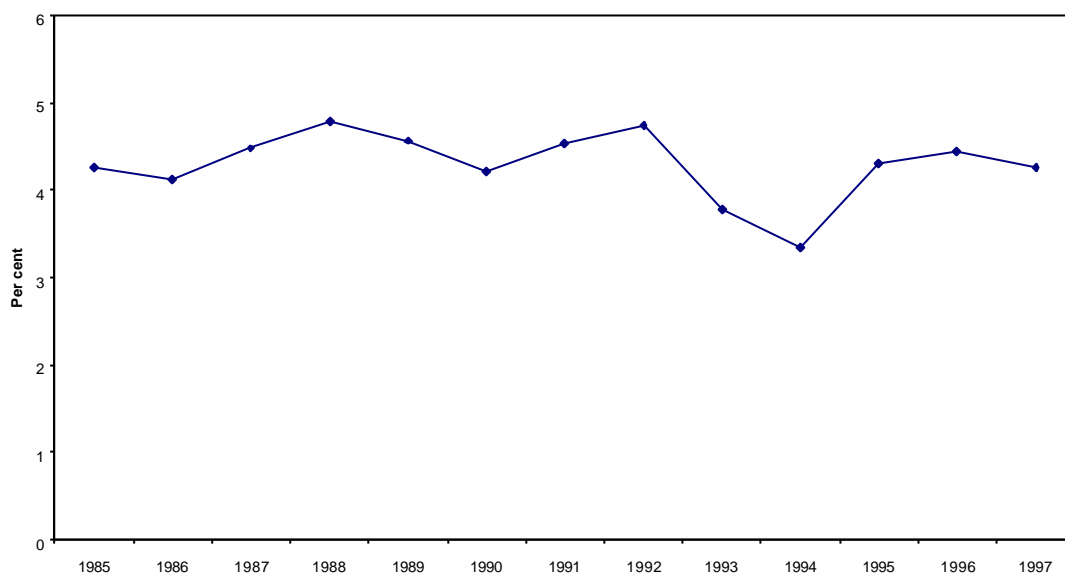
4 p.48, ABS. (1999). *Education and Training in Australia, 1998*. (Cat. No. 4224.0). Belconnen, ACT: ABS.

5 ABS. (1998). *Schools, Australia, 1997*. (Cat. No. 4221.0). Belconnen, ACT: ABS; ABS. (1997). *Population by Age and Sex: Australian States and Territories, June 1992 to June 1997*. (Cat. No. 3201.0). Belconnen, ACT: ABS.

6 Department of Education, Government of Newfoundland and Labrador. (1997). *Profile '96: Educational Indicators*. Canada: Author. [Http://www.edu.gov.nf.ca/erp/reports/gradout/k12doc/4-1.htm](http://www.edu.gov.nf.ca/erp/reports/gradout/k12doc/4-1.htm).

**TAFE participation** rates have remained relatively stable for the 15-64 year old population. Participation among 15-19 year olds, however, declined slightly between 1985 and 1997 (from 20.5 per cent to 17.9 per cent), while participation by 20-24 year olds has increased (from 12.7 per cent to 14.9 per cent). The stability of participation in TAFE, derived from NCVER data, is also evident in ABS survey data.

Participation of 15-64 year olds in TAFE (ABS Transition survey)



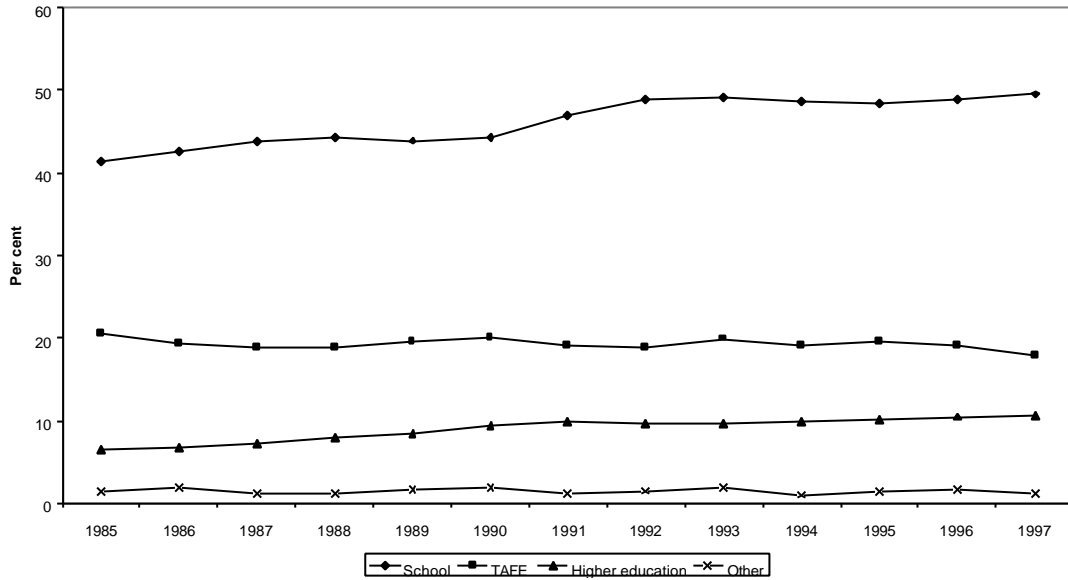
**Other (non-TAFE) VET** participation has shown an upward trend over 1985-1997.

**Total VET** (TAFE plus other) participation rose from 9.1 per cent of the 15-64 year old population in 1985 to 10.8 per cent in 1997, based on ABS non-TAFE, and institutional (NCVER) TAFE, data. Institutional VET data are affected by changes in scope over this period.

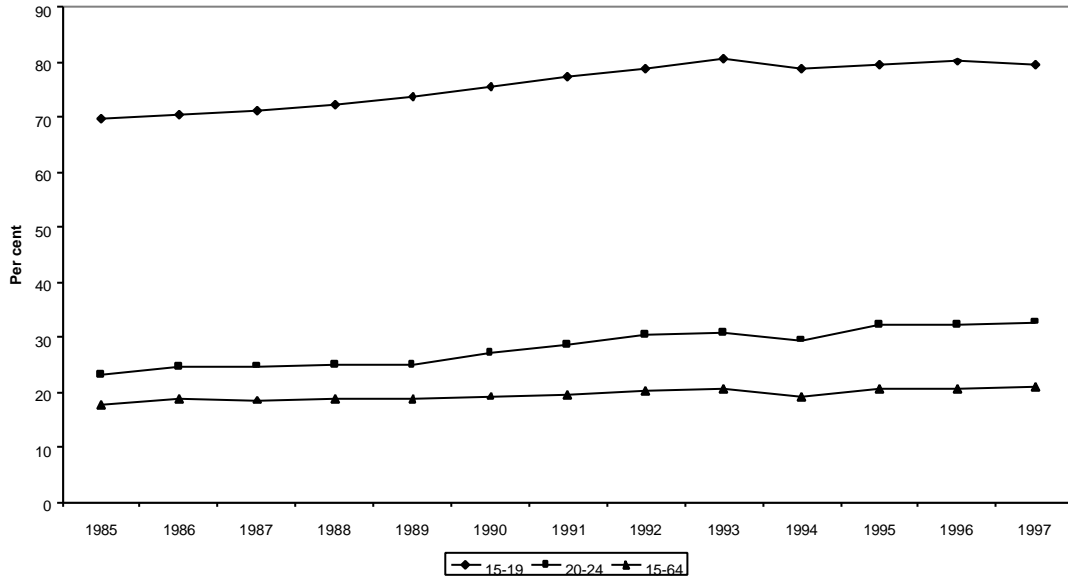
**Higher education** participation has increased for all age groups, but the rise has been most dramatic amongst younger age groups. Participation in higher education amongst 19 year olds rose from 15.5 per cent in 1985, to 25.8 per cent in 1997. The participation rate of 15-19 year olds in higher education increased from 6.5 per cent to 10.7 per cent between 1985 and 1997, and that of 20-24 year olds rose from 9.1 per cent to 15.0 per cent. Accompanying the increase in participation, there has been a sharp rise in the proportion of students who are female (up from 47.6 per cent of enrolments in 1985 to 54.4 per cent in 1997), and a decline in the proportion of students who are part-time (down from 32.5 per cent to 27.3 per cent).

Rising upper secondary participation has had a major influence on increasing participation in higher education. Youth and graduate unemployment rates, and economic costs and benefits are also significant.<sup>7</sup>

Participation rates of 15-19 year olds, by sector



Participation rates, Australia, by age



7 pp.xiv, 100, Lewis, P. & Crockett, G. (1998, March). *Short-term forecasting of the demand for university places*. Unpublished manuscript, Report 97/21, Evaluations and Investigations Program, DEETYA, Canberra.

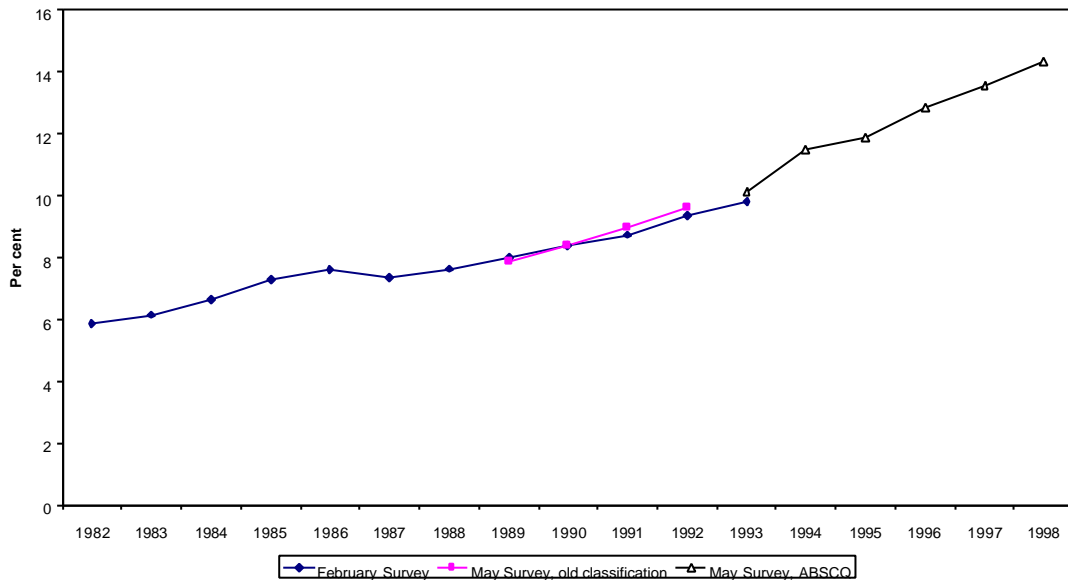
---

## EDUCATIONAL ATTAINMENT, 1982-1998

---

The proportion of the population with **bachelor degrees or higher**<sup>8</sup> has risen, from 5.8 per cent of 15+ year olds in 1982, to 14.3 per cent of 15-64 year olds in 1998, and the increase has become more marked since about 1987. This growth reflects the replacement within the 15-64 year old population over time of older persons by better educated younger cohorts, and continuing rises in higher education participation amongst all age groups (including the upgrading of qualifications from diplomas to degrees, associated with the end of the binary system of higher education in 1988).

**Proportion of population with bachelor degrees or higher**

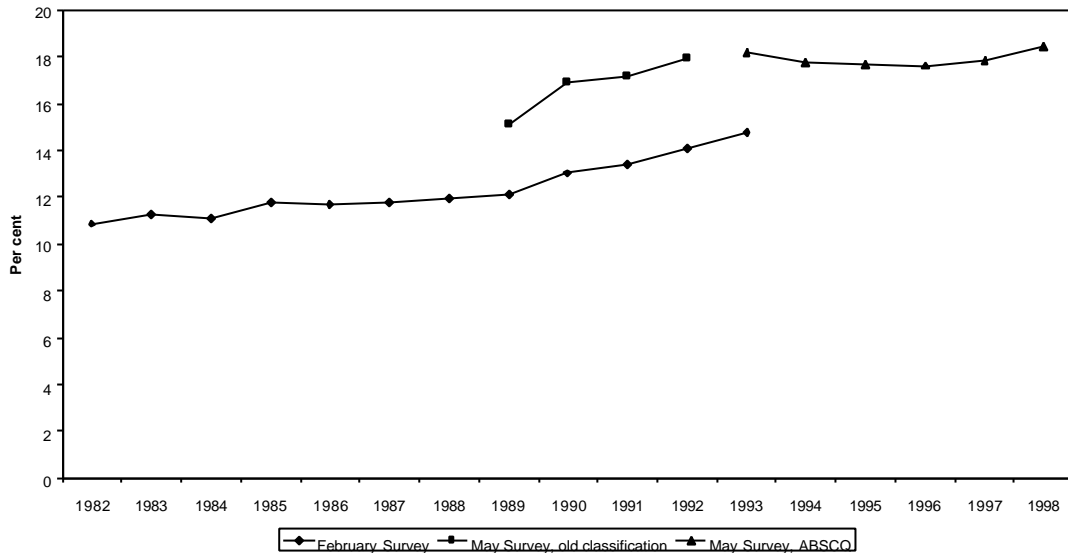


The proportion of the population that has **completed or attended the highest level of secondary school, but has not gained any post-school qualification**, has increased over the period. This is mainly due to much increased participation in secondary education (partially offset by those who go on to obtain tertiary qualifications). The bulk of this increase took place from 1989 to 1993 (rising from 12.1 per cent of 15-69 year olds in 1989, to 14.7 per cent in 1993). Since 1994, the proportion of the population in this category has remained steady (at about 17.7 per cent of all 15-64 year olds) with most of the difference between the February and May surveys being due to the introduction of the ABSCQ (which excludes qualifications gained in less than one semester), to the latter survey.

---

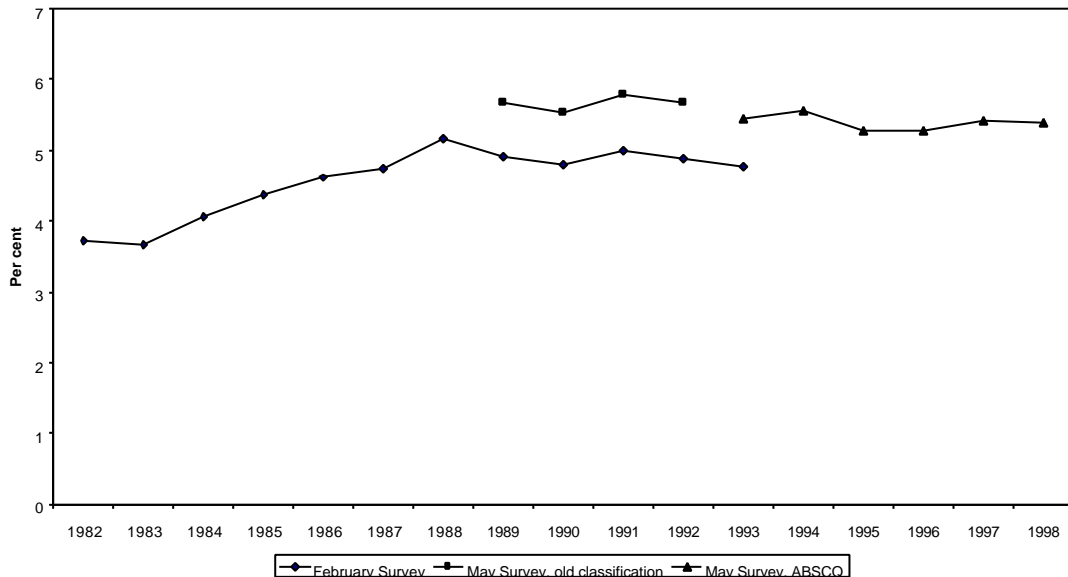
<sup>8</sup> See Table 36, p.47, and 'Caveats' section (pp.50-51) of this publication in conjunction with this ('Educational Attainment, 1982-1998') section.

**Proportion of the population which attended (completed) the highest year of secondary school, but has no post-school qualifications**



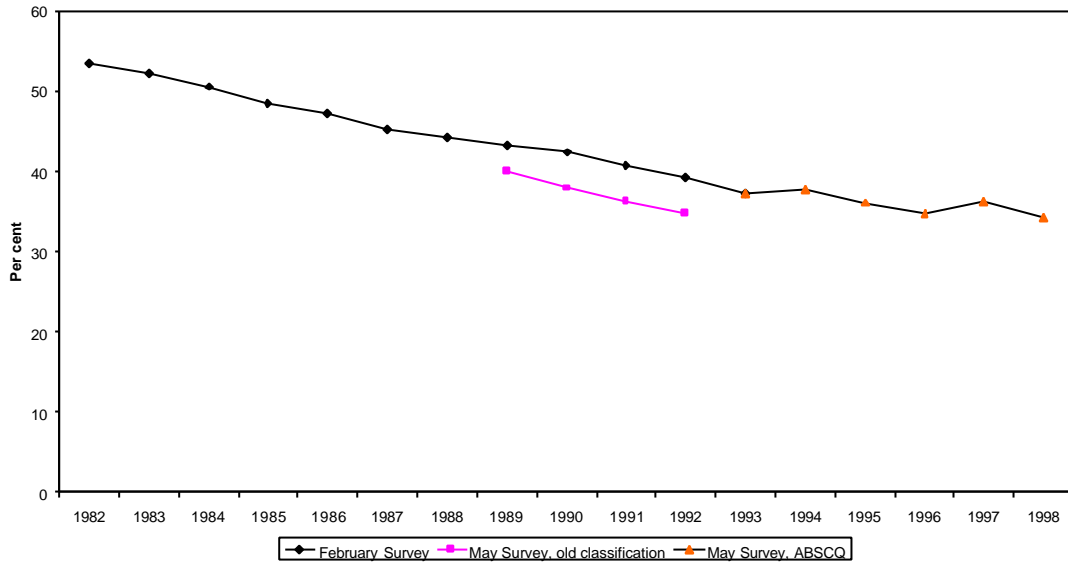
The proportion of the population **still at school** has risen since 1982 (from 3.7 per cent of 15+ year olds in 1982, to 5.4 per cent of 15-64 year olds in 1998), with most of the increase between 1983 and 1988. School participation peaked in 1991, at around 5.8 per cent of all 15-64 year olds, and has been steady since 1994 at a higher rate than before the late 1980s (up about one percentage point of the 15-69 year old population).

**Proportion of population which is still at school**



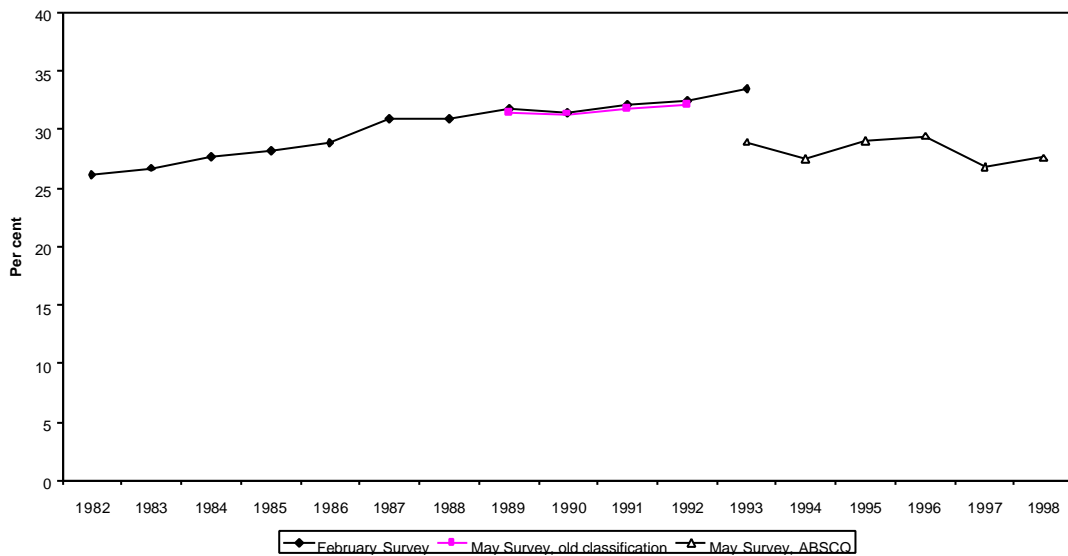
The proportion of the population that **left school before Year 12 and has no post-school qualifications**, has been steadily declining since 1982, from 53.4 per cent of all persons aged 15+ years to 34.2 per cent of all 15-64 year olds in 1998.

**Proportion of the population which did not complete schooling or gain post-school qualifications**



The proportion of the population with **post-school qualifications below bachelor degree level** appears to be relatively steady or increasing slightly, but, due to changes in the collection methodology and classification, it is difficult to draw firm conclusions about this group. For example, the ABSCQ excludes qualifications that took less than a semester to complete, which means it is not comparable with earlier classifications. The result is that the number of people with post-school qualifications below the bachelor degree level in the ABSCQ series is less than is the case for the earlier series. In addition, a move to computer assisted coding in 1997, for educational attainment, resulted in some people being classified to Basic Vocational Qualifications rather than Skilled Vocational Qualifications, and some to Associate Diplomas rather than Undergraduate Diplomas.

**Proportion of population which has attained post-school qualifications below bachelor degree level**



## SUMMARY TABLES, AUSTRALIA

**Table 1. Education participation rates (excluding VET courses of less than 200 hours), by sex - 1997 (%)**  
Summary table

	Age (years)														All ages
	5	6	7-14	15	16	17	18	19	15-19	20-24	25-29	30-64	15-64	65+	
<i>School (1)(2)</i>															
Males	70.1	99.5	98.8	91.5	77.5	56.7	12.4	2.0	48.2	0.4	0.0	0.0	5.2	0.0	17.5
Females	73.2	99.5	98.7	93.7	82.8	64.0	11.3	1.7	50.8	0.4	0.0	0.0	5.3	0.0	16.7
Persons	71.6	99.5	98.7	92.6	80.1	60.2	11.9	1.8	49.5	0.4	0.0	0.0	5.2	0.0	17.1
<i>Publicly funded VET (3)(4)(5)(6)</i>															
Males	0.0	0.0	0.0	2.1	8.9	14.4	23.9	22.0	14.2	9.8	4.0	1.7	4.4	0.1	3.0
Females	0.0	0.0	0.0	1.3	5.2	8.3	17.7	14.5	9.4	6.9	3.7	2.2	3.8	0.1	2.5
Persons (7)	0.0	0.0	0.0	1.7	7.1	11.5	21.0	18.4	11.9	8.4	3.8	1.9	4.1	0.1	2.8
<i>Higher education (8)</i>															
Males	0.0	0.0	0.0	0.0	0.0	3.2	19.3	21.6	8.8	13.6	5.2	1.8	4.3	0.0	2.9
Females	0.0	0.0	0.0	0.0	0.0	4.9	28.2	30.3	12.6	16.4	5.7	2.3	5.3	0.0	3.5
Persons	0.0	0.0	0.0	0.0	0.0	4.0	23.6	25.8	10.7	15.0	5.4	2.1	4.8	0.0	3.2
<i>Total</i>															
Males	70.1	99.5	98.8	93.6	86.4	74.4	55.6	45.6	71.2	23.8	9.2	3.5	13.9	0.1	23.4
Females	73.2	99.5	98.7	95.0	88.0	77.2	57.3	46.5	72.8	23.8	9.4	4.6	14.4	0.1	22.8
Persons	71.6	99.5	98.7	94.3	87.2	75.8	56.6	46.0	72.1	23.8	9.3	4.0	14.2	0.1	23.1

Note: Data are State/Territory of participation (ie. institution), not State/Territory of origin.

- (1) The age reference date for schools data was 1/7/97. Data exclude 26,040 part-time secondary school students because their numbers are not available by age. Data exclude home school students (estimated to number around 4000 in Australia). Schools data include 15,851 overseas students, which are about 0.5% of total students at school (Table 27, p.61, AIEF. (1998). *Overseas Student Statistics, 1997*. Canberra: DEETYA). The school participation rate for the 20-24 year old population includes those who are 25 years and above attending school, and those who did not specify their age.
- (2) The count of five year old students includes all students aged five years and under.
- (3) Vocational courses of 200+ hours only. Excludes recreational (Stream 1000) courses.
- (4) The age reference date of VET students is 30/6/97. The table excludes a small proportion of privately funded VET students. These figures are excluded because they are not available by age. Privately funded VET students comprised about 16,700 students at private business colleges; 3,200 at private adult or community education centres; 39,400 studying at private sector professional or industry associations; and 68,700 enrolled in other private training organisations. ABS data suggest inclusion of private VET students would add a maximum of three percentage points to the participation rate of any age (group), but generally 1-2%.
- (5) There were an additional 27,638 participants in publicly funded VET whose ages were unknown. They are only included in the 15-64 years and all ages (total) data in this table.
- (6) Data exclude RPLs. VET data include overseas full-fee paying clients, which are about one per cent of the total (p.8. NCVET. (1998). *Australian vocational education and training statistics. 1997: In detail*. Leabrook. SA: ANTA).
- (7) Includes sex unknown.
- (8) Higher education student data exclude overseas students. The age reference date is 30/6/97. Data include students doing enabling and non-award courses.

Source: p.67, 88; Table 28, p.36; Table 54, p.70, ABS. (1998). *Schools, Australia, 1997* (Cat. No. 4221.0). Belconnen, ABS; ABS, personal communication, Jan. 19, 1999; Table 5.1, p.42, ABS. (1998). *Education and Training Experience, Australia, 1997* (Cat. No. 6278.0). Canberra: AusInfo; NCVET, Australian vocational education and training statistics 1997 collection, unpublished data; DEETYA, Higher Education Division Student Statistics collection, unpublished data; Table 1, p.7, ABS. (1998). *Participation in Education, Australia, September 1997* (Cat. No. 6272.0). Belconnen: ABS.

**Table 2. Education participation rates (excluding recreational and short VET courses), by sex - 1997 (%)**

**Summary table**

	Age (years)														All ages
	5	6	7-14	15	16	17	18	19	15-19	20-24	25-29	30-64	15-64	65+	
<i>School (1)(2)</i>															
Males	70.1	99.5	98.8	91.5	77.5	56.7	12.4	2.0	48.2	0.4	0.0	0.0	5.2	0.0	17.5
Females	73.2	99.5	98.7	93.7	82.8	64.0	11.3	1.7	50.8	0.4	0.0	0.0	5.3	0.0	16.7
Persons	71.6	99.5	98.7	92.6	80.1	60.2	11.9	1.8	49.5	0.4	0.0	0.0	5.2	0.0	17.1
<i>Publicly funded VET (3)(4)(5)(6)</i>															
Males	0.0	0.0	0.1	5.0	15.5	21.2	29.7	27.9	19.8	15.0	7.9	3.9	7.7	0.3	5.3
Females	0.0	0.0	0.1	4.0	11.6	15.0	22.7	19.3	14.5	11.2	7.1	4.6	7.1	0.3	4.7
Persons (7)	0.0	0.0	0.1	4.5	13.7	18.3	26.5	23.8	17.3	13.1	7.5	4.3	7.5	0.3	5.1
<i>Higher education (8)</i>															
Males	0.0	0.0	0.0	0.0	0.0	3.2	19.3	21.6	8.8	13.6	5.2	1.8	4.3	0.0	2.9
Females	0.0	0.0	0.0	0.0	0.0	4.9	28.2	30.3	12.6	16.4	5.7	2.3	5.3	0.0	3.5
Persons	0.0	0.0	0.0	0.0	0.0	4.0	23.6	25.8	10.7	15.0	5.4	2.1	4.8	0.0	3.2
<i>Total</i>															
Males	70.1	99.5	98.9	96.5	93.0	81.2	61.4	51.5	76.8	29.0	13.1	5.7	17.2	0.4	25.7
Females	73.2	99.5	98.8	97.7	94.4	83.9	62.3	51.3	77.9	28.0	12.8	7.0	17.7	0.4	24.9
Persons	71.6	99.5	98.8	97.1	93.8	82.5	62.0	51.4	77.5	28.5	13.0	6.3	17.5	0.4	25.4

Note: Data are State/Territory of participation (ie. institution), not State/Territory of origin.

- (1) The age reference date for schools data was 1/7/97. Data exclude 26,040 part-time secondary school students because their numbers are not available by age. Data exclude home school students (estimated to number around 4000 in Australia). Schools data include 15,851 overseas students, which are about 0.5% of total students at school (Table 27, p.61, AIEF. (1998). *Overseas Student Statistics, 1997*. Canberra: DEETYA). The school participation rate for the 20-24 year old population includes those who are 25 years and above attending school, and those who did not specify their age.
- (2) The count of five year old students includes all students aged five years and under.
- (3) Vocational courses of 50+ hours only. Excludes recreational (Stream 1000) courses.
- (4) The age reference date of VET students is 30/6/97. The table excludes a small proportion of privately funded VET students. These figures are excluded because they are not available by age. Privately funded VET students comprised about 16,700 students at private business colleges; 3,200 at private adult or community education centres; 39,400 studying at private sector professional or industry associations; and 68,700 enrolled in other private training organisations. ABS data suggest inclusion of private VET students would add a maximum of three percentage points to the participation rate of any age (group), but generally 1-2%.
- (5) There were an additional 27,638 participants in publicly funded VET whose ages were unknown. They are only included in the 15-64 years and all ages (total) data in this table.
- (6) Data exclude RPLs. VET data include overseas full-fee paying clients, which are about one per cent of the total (p.8. NCVET. (1998). *Australian vocational education and training statistics. 1997: In detail*. Leabrook. SA: ANTA).
- (7) Includes sex unknown.
- (8) Higher education student data exclude overseas students. The age reference date is 30/6/97. Data include students doing enabling and non-award courses.

Source: p.67, 88: Table 28. p.36: Table 54. p.70. ABS. (1998). *Schools. Australia. 1997* (Cat. No. 4221.0). Belconnen. ABS: ABS. personal communication. January 19. 1999: Table 5.1. p.42. ABS. (1998). *Education and Training Experience. Australia. 1997* (Cat. No. 6278.0). Canberra: AusInfo; NCVET, Australian vocational education and training statistics 1997 collection, unpublished data; DEETYA, Higher Education Division Student Statistics collection, unpublished data; Table 1, p.7, ABS. (1998). *Participation in Education. Australia. September 1997* (Cat. No. 6272.0). Belconnen: ABS.

**Table 3. Education participation rates (excluding recreational courses), by sex - 1997 (%)**

**Summary table**

	Age (years)														All ages
	5	6	7-14	15	16	17	18	19	15-19	20-24	25-29	30-64	15-64	65+	
<i>School (1)(2)</i>															
Males	70.1	99.5	98.8	91.5	77.5	56.7	12.4	2.0	48.2	0.4	0.0	0.0	5.2	0.0	17.5
Females	73.2	99.5	98.7	93.7	82.8	64.0	11.3	1.7	50.8	0.4	0.0	0.0	5.3	0.0	16.7
Persons	71.6	99.5	98.7	92.6	80.1	60.2	11.9	1.8	49.5	0.4	0.0	0.0	5.2	0.0	17.1
<i>Publicly funded VET (3)(4)(5)(6)</i>															
Males	0.0	0.0	0.2	6.7	18.2	24.0	33.2	31.2	22.6	18.9	12.3	7.2	11.5	0.8	7.9
Females	0.0	0.0	0.2	5.8	14.6	17.9	26.0	22.6	17.4	14.9	10.8	7.8	10.8	0.7	7.2
Persons (7)	0.0	0.0	0.2	6.3	16.5	21.2	29.9	27.1	20.1	17.0	11.6	7.5	11.5	0.8	7.8
<i>Higher education (8)</i>															
Males	0.0	0.0	0.0	0.0	0.0	3.2	19.3	21.6	8.8	13.6	5.2	1.8	4.3	0.0	2.9
Females	0.0	0.0	0.0	0.0	0.0	4.9	28.2	30.3	12.6	16.4	5.7	2.3	5.3	0.0	3.5
Persons	0.0	0.0	0.0	0.0	0.0	4.0	23.6	25.8	10.7	15.0	5.4	2.1	4.8	0.0	3.2
<i>Total</i>															
Males	70.1	99.5	99.0	98.2	95.7	84.0	64.9	54.8	79.6	32.9	17.5	9.1	21.0	0.9	28.3
Females	73.2	99.5	99.0	99.5	97.4	86.8	65.5	54.6	80.8	31.7	16.5	10.2	21.4	0.8	27.5
Persons	71.6	99.5	98.9	98.9	96.6	85.4	65.4	54.7	80.3	32.4	17.0	9.6	21.6	0.8	28.1

Note: Data are State/Territory of participation (ie. institution), not State/Territory of origin.

- (1) The age reference date for schools data was 1/7/97. Data exclude 26,040 part-time secondary school students because their numbers are not available by age. Data exclude home school students (estimated to number around 4000 in Australia). Schools data include 15,851 overseas students, which are about 0.5% of total students at school (Table 27, p.61, AIEF. (1998). *Overseas Student Statistics. 1997.* Canberra: DEETYA). The school participation rate for the 20-24 year old population includes those who are 25 years and above attending school, and those who did not specify their age.
- (2) The count of five year old students includes all students aged five years and under.
- (3) Vocational courses of any [0+ hours] duration. Excludes recreational (Stream 1000) courses.
- (4) The age reference date of VET students is 30/6/97. The table excludes a small proportion of privately funded VET students. These figures are excluded because they are not available by age. Privately funded VET students comprised about 16,700 students at private business colleges; 3,200 at private adult or community education centres; 39,400 studying at private sector professional or industry associations; and 68,700 enrolled in other private training organisations. ABS data suggest inclusion of private VET students would add a maximum of three percentage points to the participation rate of any age (group), but generally 1-2%.
- (5) There were an additional 27,638 participants in publicly funded VET whose ages were unknown. They are only included in the 15-64 years and all ages (total) data in this table.
- (6) Data exclude RPLs. VET data include overseas full-fee paying clients, which are about one per cent of the total (p.8. NCVER. (1998). *Australian vocational education and training statistics. 1997: In detail.* Leabrook. SA: ANTA).
- (7) Includes sex unknown.
- (8) Higher education student data exclude overseas students. The age reference date is 30/6/97. Data include students doing enabling and non-award courses.

Source: p.67, 88; Table 28, p.36; Table 54, p.70, ABS. (1998). *Schools, Australia, 1997* (Cat. No. 4221.0). Belconnen, ABS; ABS, personal communication, January 19, 1999; Table 5.1, p.42, ABS. (1998). *Education and Training Experience, Australia, 1997* (Cat. No. 6278.0). Canberra: AusInfo; NCVER, Australian vocational education and training statistics 1997 collection, unpublished data; DETYA, Higher Education Division Student Statistics collection, unpublished data; Table 1, p.7, ABS. (1998). *Participation in Education, Australia, September 1997* (Cat. No. 6272.0). Belconnen: ABS.

## SUMMARY TABLES, STATES AND TERRITORIES

**Table 4. Education participation rates (excluding VET courses less than 200 hours), by State and Territory - 1997 (%)**  
Summary table

	Age (years)														All ages
	5	6	7-14	15	16	17	18	19	15-19	20-24	25-29	30-64	15-64	65+	
<i>School (1)(2)(3)</i>															
NSW	89.2	99.6	98.4	92.5	77.8	65.0	14.1	1.8	50.6	0.2	0.0	0.0	5.2	0.0	17.1
Vic.	72.0	99.5	98.6	94.8	86.3	73.5	15.7	2.2	54.1	0.2	0.0	0.0	5.6	0.0	17.0
Qld	41.2	98.8	98.3	89.6	78.6	47.7	6.7	1.4	45.3	0.3	0.0	0.0	5.0	0.0	16.9
WA	44.6	101.7	100.0	91.4	74.1	39.9	5.9	1.7	42.8	0.6	0.0	0.0	4.7	0.0	17.3
SA	104.9	99.9	99.2	92.3	81.4	52.6	7.0	1.7	47.4	0.7	0.0	0.0	4.8	0.0	16.8
Tas.	56.3	98.8	98.1	97.3	74.3	55.7	11.7	2.2	50.0	0.9	0.0	0.0	5.6	0.0	17.8
NT	83.9	91.8	98.3	80.2	68.1	39.4	10.9	2.9	40.7	0.8	0.0	0.0	4.4	0.0	19.5
ACT	80.5	101.4	104.8	105.5	98.5	88.5	27.0	3.2	61.4	0.3	0.0	0.0	7.0	0.0	19.8
Aust.	71.6	99.5	98.7	92.6	80.1	60.2	11.9	1.8	49.5	0.4	0.0	0.0	5.2	0.0	17.1
<i>Publicly funded VET (courses of 200+ hours only)(4)(5)(6)</i>															
NSW	0.0	0.0	0.0	1.6	8.2	11.8	23.0	20.4	12.9	9.5	4.4	2.3	4.4	0.1	3.0
Vic.	0.0	0.0	0.0	1.2	5.3	9.0	24.6	23.6	12.8	10.9	4.5	2.2	4.6	0.1	3.1
Qld	0.0	0.0	0.0	2.1	7.0	12.1	14.0	11.2	9.2	5.2	2.4	1.4	3.7	0.0	2.5
WA	0.0	0.0	0.1	3.3	9.3	17.6	23.0	16.3	13.8	6.7	3.3	1.6	3.7	0.1	2.6
SA	0.0	0.0	0.0	1.2	3.8	8.9	16.1	13.7	8.7	6.3	3.0	1.4	2.9	0.0	1.9
Tas.	0.0	0.0	0.0	0.6	14.8	18.1	21.6	17.5	14.3	8.0	3.3	1.4	3.7	0.0	2.4
NT	0.0	0.0	0.0	2.0	9.3	11.8	15.5	15.2	10.7	7.1	4.8	2.9	4.7	0.1	3.3
ACT	0.0	0.0	0.0	0.8	2.8	5.1	21.0	20.4	10.6	9.6	4.3	2.0	4.6	0.1	3.3
Aust.	0.0	0.0	0.0	1.7	7.1	11.5	21.0	18.4	11.9	8.4	3.8	1.9	4.1	0.1	2.8
<i>Higher education (7)</i>															
NSW	0.0	0.0	0.0	0.0	0.0	0.9	20.0	23.6	8.8	14.3	5.4	2.1	4.5	0.0	3.0
Vic.	0.0	0.0	0.0	0.0	0.0	0.8	27.2	30.1	11.8	17.4	5.5	2.0	5.2	0.0	3.5
Qld	0.0	0.0	0.0	0.0	0.0	10.1	24.3	23.8	11.5	12.6	5.3	1.9	4.6	0.0	3.1
WA	0.0	0.0	0.0	0.0	0.0	10.1	21.7	21.6	10.7	13.0	5.2	2.1	4.6	0.0	3.1
SA	0.0	0.0	0.0	0.0	0.0	6.0	24.5	26.3	11.3	14.6	5.2	2.0	4.6	0.0	3.0
Tas.	0.0	0.0	0.0	0.0	0.0	0.7	17.4	23.5	7.9	13.9	4.1	1.6	3.8	0.0	2.5
NT	0.0	0.0	0.0	0.0	0.0	2.4	9.6	9.6	4.3	6.1	3.7	2.7	3.5	0.1	2.4
ACT	0.0	0.0	0.0	0.0	0.0	2.4	34.1	40.1	16.6	26.0	9.1	3.2	8.4	0.1	6.0
Aust.	0.0	0.0	0.0	0.0	0.0	4.0	23.6	25.8	10.7	15.0	5.4	2.1	4.8	0.0	3.2
<i>Total</i>															
NSW	89.2	99.6	98.4	94.1	86.0	77.7	57.1	45.8	72.3	24.1	9.8	4.3	14.2	0.2	23.1
Vic.	72.0	99.5	98.7	96.0	91.6	83.3	67.5	55.9	78.7	28.5	10.0	4.2	15.4	0.2	23.5
Qld	41.2	98.8	98.4	91.7	85.6	69.8	45.1	36.4	66.0	18.1	7.7	3.3	13.3	0.1	22.5
WA	44.6	101.7	100.1	94.7	83.4	67.6	50.6	39.6	67.3	20.3	8.6	3.7	13.0	0.2	23.0
SA	104.9	99.9	99.2	93.5	85.2	67.5	47.6	41.7	67.3	21.6	8.2	3.3	12.4	0.1	21.7
Tas.	56.3	98.8	98.1	97.9	89.1	74.5	50.6	43.2	72.1	22.8	7.3	3.0	13.1	0.1	22.7
NT	83.9	91.8	98.3	82.2	77.4	53.6	36.0	27.7	55.6	14.0	8.5	5.6	12.6	0.3	25.3
ACT	80.5	101.4	104.8	106.3	101.3	96.0	82.1	63.7	88.7	35.9	13.3	5.2	20.0	0.3	29.0
Aust.	71.6	99.5	98.8	94.3	87.2	75.8	56.6	46.0	72.1	23.8	9.3	4.0	14.2	0.1	23.1

Note: Data are State/Territory of participation (ie. institution), not State/Territory of origin.

- (1) The age reference date for schools data was 1/7/97. Data exclude 26,040 part-time secondary school students. The school participation rate for the 20-24 year old population includes those who are 25 years and above attending school, and those who did not specify their age.
- (2) Some school participation rates exceed 100%. The reasons for this most likely include: differences in methodologies for calculating ERP and numbers in schools; enrolment by students from interstate (especially in the ACT); varying entry ages to school (continuous after five years old in SA); and the interaction between pre- and primary school participation.
- (3) The count of five year old students includes all students aged five years and under.
- (4) The age reference date of VET students is 30/6/97. The table excludes a small proportion of privately funded VET students. There were about 16,700 students at private business colleges; 3,200 at private adult or community education centres; 39,400 studying at private sector professional or industry associations; and 68,700 enrolled in other private training organisations.
- (5) There were an additional 27,638 participants in publicly funded VET whose ages were unknown. They are only included in the 15-64 years and total (all ages) data in this table.
- (6) Data exclude RPLs. VET data include overseas full-fee paying clients, which are about one per cent of the total (p.8, NCVET. (1998). *Australian vocational education and training statistics. 1997: In detail.* Leabrook, SA: ANTA).
- (7) Higher education student data exclude overseas students. The age reference date is 30/6/97. Data include students doing enabling and non-award courses.

Source: Table 6.2. p.108; Table 6.4. p.109. ABS. (1999). *Children. Australia: A Social Report* (Cat. No. 4119.0). Canberra: AusInfo: p.88; Table 28. p.36; Table 54. p.70. ABS. (1998). *Schools. Australia. 1997* (Cat. No. 4221.0). Belconnen. ABS: Table 5.1. p.42. ABS. (1998). *Education and Training Experience. Australia. 1997* (Cat. No. 6278.0). Canberra: AusInfo: NCVET, Australian vocational education and training statistics 1997 collection, unpublished data; DETYA, Higher Education Division Student Statistics collection, unpublished data.

**Table 5. Education participation rates (excluding VET courses less than 50 hours), by State and Territory - 1997 (%)**  
**Summary table**

	Age (years)														All ages
	5	6	7-14	15	16	17	18	19	15-19	20-24	25-29	30-64	15-64	65+	
<i>School (1)(2)(3)</i>															
NSW	89.2	99.6	98.4	92.5	77.8	65.0	14.1	1.8	50.6	0.2	0.0	0.0	5.2	0.0	17.1
Vic.	72.0	99.5	98.6	94.8	86.3	73.5	15.7	2.2	54.1	0.2	0.0	0.0	5.6	0.0	17.0
Qld	41.2	98.8	98.3	89.6	78.6	47.7	6.7	1.4	45.3	0.3	0.0	0.0	5.0	0.0	16.9
WA	44.6	101.7	100.0	91.4	74.1	39.9	5.9	1.7	42.8	0.6	0.0	0.0	4.7	0.0	17.3
SA	104.9	99.9	99.2	92.3	81.4	52.6	7.0	1.7	47.4	0.7	0.0	0.0	4.8	0.0	16.8
Tas.	56.3	98.8	98.1	97.3	74.3	55.7	11.7	2.2	50.0	0.9	0.0	0.0	5.6	0.0	17.8
NT	83.9	91.8	98.3	80.2	68.1	39.4	10.9	2.9	40.7	0.8	0.0	0.0	4.4	0.0	19.5
ACT	80.5	101.4	104.8	105.5	98.5	88.5	27.0	3.2	61.4	0.3	0.0	0.0	7.0	0.0	19.8
Aust.	71.6	99.5	98.7	92.6	80.1	60.2	11.9	1.8	49.5	0.4	0.0	0.0	5.2	0.0	17.1
<i>Publicly funded VET (courses of 50+ hours only)(4)(5)(6)</i>															
NSW	0.0	0.0	0.1	6.7	19.0	21.9	29.6	26.0	20.6	14.5	8.1	4.5	7.7	0.3	5.2
Vic.	0.0	0.0	0.1	2.3	9.0	13.3	29.8	29.1	16.8	16.2	8.8	5.0	8.1	0.5	5.5
Qld	0.0	0.0	0.1	4.6	13.2	18.8	17.9	15.1	13.8	8.4	5.0	3.2	6.8	0.2	4.6
WA	0.0	0.0	0.1	4.7	12.1	22.7	29.3	23.4	18.4	11.7	7.2	3.9	6.9	0.3	4.7
SA	0.0	0.0	0.1	3.6	9.1	12.6	20.7	19.3	13.0	11.6	7.2	4.1	7.2	0.3	4.8
Tas.	0.0	0.0	0.0	1.1	16.9	21.5	25.4	21.8	17.0	12.0	6.6	3.6	6.3	0.1	4.1
NT	0.0	0.0	0.3	5.2	16.2	17.2	21.6	21.7	16.3	12.0	8.9	6.0	8.7	0.7	6.1
ACT	0.0	0.0	0.0	1.0	3.9	7.9	25.3	24.9	13.4	13.9	7.7	4.0	7.4	0.3	5.3
Aust.	0.0	0.0	0.1	4.5	13.7	18.3	26.5	23.8	17.3	13.1	7.5	4.3	7.5	0.3	5.1
<i>Higher education (7)</i>															
NSW	0.0	0.0	0.0	0.0	0.0	0.9	20.0	23.6	8.8	14.3	5.4	2.1	4.5	0.0	3.0
Vic.	0.0	0.0	0.0	0.0	0.0	0.8	27.2	30.1	11.8	17.4	5.5	2.0	5.2	0.0	3.5
Qld	0.0	0.0	0.0	0.0	0.0	10.1	24.3	23.8	11.5	12.6	5.3	1.9	4.6	0.0	3.1
WA	0.0	0.0	0.0	0.0	0.0	10.1	21.7	21.6	10.7	13.0	5.2	2.1	4.6	0.0	3.1
SA	0.0	0.0	0.0	0.0	0.0	6.0	24.5	26.3	11.3	14.6	5.2	2.0	4.6	0.0	3.0
Tas.	0.0	0.0	0.0	0.0	0.0	0.7	17.4	23.5	7.9	13.9	4.1	1.6	3.8	0.0	2.5
NT	0.0	0.0	0.0	0.0	0.0	2.4	9.6	9.6	4.3	6.1	3.7	2.7	3.5	0.1	2.4
ACT	0.0	0.0	0.0	0.0	0.0	2.4	34.1	40.1	16.6	26.0	9.1	3.2	8.4	0.1	6.0
Aust.	0.0	0.0	0.0	0.0	0.0	4.0	23.6	25.8	10.7	15.0	5.4	2.1	4.8	0.0	3.2
<i>Total</i>															
NSW	89.2	99.6	98.5	99.2	96.8	87.9	63.7	51.4	80.0	29.0	13.5	6.5	17.5	0.4	25.3
Vic.	72.0	99.5	98.7	97.1	95.3	87.6	72.7	61.4	82.7	33.8	14.3	7.1	18.9	0.5	25.9
Qld	41.2	98.8	98.4	94.2	91.8	76.5	49.0	40.3	70.7	21.4	10.2	5.1	16.3	0.2	24.5
WA	44.6	101.7	100.2	96.1	86.2	72.8	56.9	46.6	71.8	25.3	12.5	6.0	16.1	0.3	25.1
SA	104.9	99.9	99.2	95.9	90.5	71.2	52.1	47.3	71.6	26.9	12.4	6.1	16.7	0.3	24.6
Tas.	56.3	98.8	98.2	98.4	91.2	77.8	54.4	47.5	74.9	26.8	10.7	5.2	15.7	0.1	24.4
NT	83.9	91.8	98.6	85.4	84.3	59.0	42.0	34.2	61.2	18.8	12.6	8.7	16.5	0.8	28.0
ACT	80.5	101.4	104.8	106.5	102.4	98.8	86.4	68.2	91.4	40.2	16.8	7.1	22.8	0.4	31.0
Aust.	71.6	99.5	98.8	97.1	93.8	82.5	62.0	51.4	77.5	28.5	13.0	6.3	17.5	0.4	25.4

Note: Data are State/Territory of participation (ie. institution), not State/Territory of origin.

- (1) The age reference date for schools data was 1/7/97. Data exclude 26,040 part-time secondary school students. The school participation rate for the 20-24 year old population includes those who are 25 years and above attending school, and those who did not specify their age.
- (2) Some school participation rates exceed 100%. The reasons for this most likely include: differences in methodologies for calculating ERP and numbers in schools; enrolment by students from interstate (especially in the ACT); varying entry ages to school (continuous after five years old in SA); and the interaction between pre- and primary school participation.
- (3) The count of five year old students includes all students aged five years and under.
- (4) The age reference date of VET students is 30/6/97. The table excludes a small proportion of privately funded VET students. There were about 16,700 students at private business colleges; 3,200 at private adult or community education centres; 39,400 studying at private sector professional or industry associations; and 68,700 enrolled in other private training organisations.
- (5) There were an additional 27,638 participants in publicly funded VET whose ages were unknown. They are only included in the 15-64 years and total (all ages) data in this table.
- (6) Data exclude RPLs. VET data include overseas full-fee paying clients, which are about one per cent of the total (p.8, NCVER. (1998). *Australian vocational education and training statistics, 1997: In detail*. Leabrook, SA: ANTA).
- (7) Higher education student data exclude overseas students. The age reference date is 30/6/97. Data include students doing enabling and non-award courses.

Source: Table 6.2, p.108; Table 6.4, p.109, ABS. (1999). *Children, Australia: A Social Report*. Cat. No. 4119.0. Canberra: AusInfo; p.88; Table 28, p.36; Table 54, p.70, ABS. (1998). *Schools, Australia, 1997* (Cat. No. 4221.0). Belconnen, ABS; Table 5.1, p.42, ABS. (1998). *Education and Training Experience, Australia, 1997* (Cat. No. 6278.0). Canberra: AusInfo; NCVER, Australian vocational education and training statistics 1997 collection, unpublished data; DETYA, Higher Education Division Student Statistics collection, unpublished data.

**Table 6. Education participation rates (including VET courses of any duration (0+ hours)), by State and Territory - 1997 (%)**  
**Summary table**

	Age (years)														All ages
	5	6	7-14	15	16	17	18	19	15-19	20-24	25-29	30-64	15-64	65+	
<i>School (1)(2)(3)</i>															
NSW	89.2	99.6	98.4	92.5	77.8	65.0	14.1	1.8	50.6	0.2	0.0	0.0	5.2	0.0	17.1
Vic.	72.0	99.5	98.6	94.8	86.3	73.5	15.7	2.2	54.1	0.2	0.0	0.0	5.6	0.0	17.0
Qld	41.2	98.8	98.3	89.6	78.6	47.7	6.7	1.4	45.3	0.3	0.0	0.0	5.0	0.0	16.9
WA	44.6	101.7	100.0	91.4	74.1	39.9	5.9	1.7	42.8	0.6	0.0	0.0	4.7	0.0	17.3
SA	104.9	99.9	99.2	92.3	81.4	52.6	7.0	1.7	47.4	0.7	0.0	0.0	4.8	0.0	16.8
Tas.	56.3	98.8	98.1	97.3	74.3	55.7	11.7	2.2	50.0	0.9	0.0	0.0	5.6	0.0	17.8
NT	83.9	91.8	98.3	80.2	68.1	39.4	10.9	2.9	40.7	0.8	0.0	0.0	4.4	0.0	19.5
ACT	80.5	101.4	104.8	105.5	98.5	88.5	27.0	3.2	61.4	0.3	0.0	0.0	7.0	0.0	19.8
Aust.	71.6	99.5	98.7	92.6	80.1	60.2	11.9	1.8	49.5	0.4	0.0	0.0	5.2	0.0	17.1
<i>Publicly funded VET (courses of any duration)(4)(5)(6)</i>															
NSW	0.0	0.0	0.3	8.0	21.0	24.5	33.3	29.6	23.2	18.3	12.1	7.5	11.9	0.8	8.0
Vic.	0.0	0.0	0.2	4.7	11.6	16.2	33.8	33.3	20.0	21.5	14.5	9.7	13.3	1.1	9.0
Qld	0.0	0.0	0.2	6.7	17.4	22.5	20.7	17.4	16.9	11.1	7.6	5.2	9.5	0.3	6.4
WA	0.0	0.0	0.2	5.2	13.0	24.1	31.3	25.7	19.8	14.3	9.8	5.8	9.0	0.5	6.2
SA	0.0	0.0	0.3	7.1	16.9	17.7	25.0	23.9	18.0	16.9	13.1	9.4	14.1	1.2	9.4
Tas.	0.0	0.0	0.1	1.7	18.0	23.3	27.5	23.9	18.5	14.2	9.2	5.7	8.5	0.2	5.6
NT	0.0	0.0	0.5	7.9	19.0	19.4	24.5	25.0	19.0	15.0	11.9	8.9	12.1	1.2	8.6
ACT	0.0	0.0	0.0	1.1	4.1	8.6	26.5	25.8	14.0	14.9	8.5	4.6	8.4	0.3	6.0
Aust.	0.0	0.0	0.2	6.3	16.5	21.2	29.9	27.1	20.1	17.0	11.6	7.5	11.5	0.8	7.8
<i>Higher education (7)</i>															
NSW	0.0	0.0	0.0	0.0	0.0	0.9	20.0	23.6	8.8	14.3	5.4	2.1	4.5	0.0	3.0
Vic.	0.0	0.0	0.0	0.0	0.0	0.8	27.2	30.1	11.8	17.4	5.5	2.0	5.2	0.0	3.5
Qld	0.0	0.0	0.0	0.0	0.0	10.1	24.3	23.8	11.5	12.6	5.3	1.9	4.6	0.0	3.1
WA	0.0	0.0	0.0	0.0	0.0	10.1	21.7	21.6	10.7	13.0	5.2	2.1	4.6	0.0	3.1
SA	0.0	0.0	0.0	0.0	0.0	6.0	24.5	26.3	11.3	14.6	5.2	2.0	4.6	0.0	3.0
Tas.	0.0	0.0	0.0	0.0	0.0	0.7	17.4	23.5	7.9	13.9	4.1	1.6	3.8	0.0	2.5
NT	0.0	0.0	0.0	0.0	0.0	2.4	9.6	9.6	4.3	6.1	3.7	2.7	3.5	0.1	2.4
ACT	0.0	0.0	0.0	0.0	0.0	2.4	34.1	40.1	16.6	26.0	9.1	3.2	8.4	0.1	6.0
Aust.	0.0	0.0	0.0	0.0	0.0	4.0	23.6	25.8	10.7	15.0	5.4	2.1	4.8	0.0	3.2
<i>Total</i>															
NSW	89.2	99.6	98.7	100.5	98.8	90.4	67.4	55.0	82.6	32.9	17.5	9.6	21.6	0.9	28.1
Vic.	72.0	99.5	98.8	99.5	97.9	90.5	76.7	65.6	85.9	39.1	20.0	11.7	24.0	1.1	29.4
Qld	41.2	98.8	98.6	96.3	96.0	80.3	51.7	42.6	73.7	24.0	12.9	7.1	19.0	0.3	26.4
WA	44.6	101.7	100.2	96.6	87.1	74.1	58.9	49.0	73.2	27.8	15.0	7.9	18.3	0.5	26.6
SA	104.9	99.9	99.4	99.4	98.3	76.3	56.4	51.9	76.7	32.2	18.2	11.4	23.5	1.2	29.2
Tas.	56.3	98.8	98.2	99.0	92.3	79.7	56.6	49.7	76.4	29.0	13.3	7.3	17.9	0.2	25.8
NT	83.9	91.8	98.8	88.1	87.1	61.2	44.9	37.6	64.0	21.9	15.6	11.6	20.0	1.3	30.5
ACT	80.5	101.4	104.8	106.6	102.6	99.5	87.5	69.1	92.0	41.1	17.6	7.7	23.8	0.4	31.7
Aust.	71.6	99.5	99.0	98.9	96.6	85.4	65.4	54.7	80.3	32.4	17.0	9.6	21.6	0.8	28.1

Note: Data are State/Territory of participation (ie. institution), not State/Territory of origin.

- (1) The age reference date for schools data was 1/7/97. Data exclude 26,040 part-time secondary school students. The school participation rate for the 20-24 year old population includes those who are 25 years and above attending school, and those who did not specify their age.
- (2) Some school participation rates exceed 100%. The reasons for this most likely include: differences in methodologies for calculating ERP and numbers in schools; enrolment by students from interstate (especially in the ACT); varying entry ages to school (continuous after five years old in SA); and the interaction between pre- and primary school participation.
- (3) The count of five year old students includes all students aged five years and under.
- (4) The age reference date of VET students is 30/6/97. The table excludes a small proportion of privately funded VET students. There were about 16,700 students at private business colleges; 3,200 at private adult or community education centres; 39,400 studying at private sector professional or industry associations; and 68,700 enrolled in other private training organisations.
- (5) There were an additional 27,638 participants in publicly funded VET whose ages were unknown. They are only included in the 15-64 years and total (all ages) data in this table.
- (6) Data exclude RPLs. VET data include overseas full-fee paying clients, which are about one per cent of the total (p.8, NCVER. (1998). *Australian vocational education and training statistics. 1997: In detail.* Leabrook. SA: ANTA).
- (7) Higher education student data exclude overseas students. The age reference date is 30/6/97. Data include students doing enabling and non-award courses.

Source: Table 6.2. p.108; Table 6.4. p.109. ABS. (1999). *Children. Australia: A Social Report.* Cat. No. 4119.0. Canberra: AusInfo: p.88; Table 28. p.36; Table 54. p.70. ABS. (1998). *Schools. Australia. 1997* (Cat. No. 4221.0). Belconnen. ABS: Table 5.1. p.42. ABS. (1998). *Education and Training Experience. Australia. 1997* (Cat. No. 6278.0). Canberra: AusInfo: NCVER, Australian vocational education and training statistics 1997 collection, unpublished data; DETYA. Higher Education Division Student Statistics collection, unpublished data.

## TIME SERIES

**Table 7. Education participation rates (1) - 1985-1997 (%)**  
Time series table

	Age (years)												(3)	(4) All ages (5+ years)	All ages (0+ years)	
	(2) 5	6	7-14	15	16	17	18	19	15-19	20-24	25-29	30-64				15-64
<b>School (5)</b>																
1985	81.1	99.7	99.1	90.1	65.3	38.0	7.3	1.3	41.3	0.3	0.0	0.0	5.2	0.0	20.6	19.0
1986	79.3	99.6	99.2	89.8	66.8	39.9	7.2	1.2	42.5	0.3	0.0	0.0	5.4	0.0	20.3	18.7
1987	77.9	98.6	99.1	90.8	68.9	43.0	8.0	1.4	43.7	0.4	0.0	0.0	5.6	0.0	20.0	18.5
1988	76.9	99.5	99.0	91.0	72.1	46.1	9.0	1.7	44.3	0.5	0.0	0.0	5.7	0.0	19.8	18.3
1989	77.8	99.3	99.0	91.7	72.5	48.5	9.5	1.9	43.9	0.5	0.0	0.0	5.6	0.0	19.5	18.0
1990	76.6	99.5	98.8	92.9	75.7	50.2	10.6	2.0	44.2	0.5	0.0	0.0	5.5	0.0	19.2	17.8
1991	74.9	98.8	98.9	93.1	80.3	56.9	12.5	2.5	47.0	0.6	0.0	0.0	5.6	0.0	19.2	17.8
1992	74.9	98.5	98.8	93.2	80.9	60.3	14.5	2.9	48.8	0.7	0.0	0.0	5.6	0.0	19.1	17.7
1993	73.5	99.3	98.8	93.1	81.3	60.6	14.0	2.7	49.1	0.7	0.0	0.0	5.5	0.0	18.9	17.5
1994	74.1	98.8	98.9	92.2	80.0	59.7	12.9	2.4	48.6	0.6	0.0	0.0	5.3	0.0	18.7	17.4
1995	72.6	99.2	98.8	92.8	78.8	58.5	12.3	2.1	48.4	0.5	0.0	0.0	5.2	0.0	18.5	17.2
1996	72.6	99.3	98.7	92.1	79.9	59.1	11.7	2.0	48.8	0.4	0.0	0.0	5.2	0.0	18.5	17.2
1997	71.6	99.5	98.7	92.6	80.1	60.2	11.9	1.8	49.5	0.4	0.0	0.0	5.2	0.0	18.4	17.1
<b>TAFE (6)</b>																
1985	0.0	0.0	(7)0.0	(8)7.1	(8)23.6	22.5	27.0	22.8	20.5	12.7	8.6	4.8	8.2	(7)0.0	5.9	5.4
1986	0.0	0.0	(7)0.0	8.5	16.2	22.6	27.0	23.3	19.3	12.9	9.0	5.0	8.3	(7)0.0	6.0	5.5
1987	0.0	0.0	(7)0.0	7.6	15.2	21.9	27.2	23.5	18.8	13.3	9.1	5.1	8.4	(7)0.0	6.2	5.8
1988	0.0	0.0	(7)0.0	6.7	15.6	21.9	27.0	23.3	18.9	13.0	8.9	(9)5.1	8.3	(7)0.0	6.2	5.8
1989	0.0	0.0	(7)0.0	n.a.	n.a.	22.7	27.3	23.4	19.6	12.9	8.7	(9)5.1	8.3	(7)0.0	6.0	5.5
1990	0.0	0.0	(7)0.0	6.5	16.1	21.9	28.3	25.0	20.0	13.7	8.9	(9)5.1	8.5	(7)0.0	6.1	5.7
1991	0.0	0.0	(7)0.0	6.0	14.1	19.5	27.9	25.6	19.0	14.1	9.3	(9)5.3	8.5	(7)0.0	6.2	5.7
1992	0.0	0.0	(7)0.0	5.9	13.8	18.0	28.5	26.0	18.8	14.6	9.4	5.4	8.6	(7)0.0	6.4	6.0
(10) 1993	0.0	0.0	(7)0.0	5.9	15.1	19.6	29.8	27.9	19.9	14.5	9.3	5.6	9.4	0.4	6.8	6.3
1994	0.0	0.0	0.1	5.0	15.3	19.7	28.4	26.3	19.1	14.3	8.8	4.9	8.6	0.2	6.2	5.7
1995	0.0	0.0	0.1	5.5	15.8	20.6	28.5	26.6	19.5	15.0	9.3	5.5	9.1	0.3	6.6	6.1
1996	0.0	0.0	0.1	5.9	16.2	20.4	27.6	25.6	19.1	15.3	9.6	5.7	9.1	0.4	6.6	6.1
1997	0.0	0.0	0.2	5.5	14.1	18.5	27.1	24.8	17.9	14.9	9.5	5.7	9.1	0.3	6.6	6.2
<b>Other public and private VET (survey data)(11)</b>																
1985	0.0	0.0	(7)0.0	**	n.a.	n.a.	n.a.	n.a.	1.3	1.2	1.1	0.7	0.9	n.a.	0.6	0.6
1986	0.0	0.0	(7)0.0	**	n.a.	n.a.	2.0	(12)1.8	2.0	2.1	1.6	0.9	1.3	n.a.	0.9	0.9
1987	0.0	0.0	(7)0.0	**	n.a.	n.a.	n.a.	n.a.	1.2	1.4	1.3	0.7	1.0	n.a.	0.7	0.6
1988	0.0	0.0	(7)0.0	**	(12)0.6	(12)0.8	(12)0.6	(12)0.6	1.2	1.3	1.4	0.8	1.0	n.a.	0.7	0.7
1989	0.0	0.0	(7)0.0	**	(12)0.6	(12)1.0	(12)1.5	(12)1.5	1.7	1.6	1.6	0.9	1.2	n.a.	0.8	0.8
1990	0.0	0.0	(7)0.0	**	(12)0.7	(12)1.3	(12)1.6	(12)1.1	1.9	2.0	1.7	1.0	1.3	n.a.	1.0	0.9
1991	0.0	0.0	(7)0.0	**	**	1.3	2.2	2.0	1.2	1.8	1.6	0.9	1.2	n.a.	0.8	0.8
1992	0.0	0.0	(7)0.0	**	**	1.8	3.1	2.1	1.5	2.2	1.9	1.1	1.4	n.a.	1.0	0.9
1993	0.0	0.0	(7)0.0	**	**	1.5	3.4	3.6	1.9	2.0	1.4	0.7	1.0	n.a.	0.7	0.7
1994	0.0	0.0	(7)0.0	**	**	1.1	2.6	0.9	1.0	1.2	1.3	0.5	0.7	n.a.	0.5	0.5
1995	0.0	0.0	(7)0.0	**	**	0.7	1.4	2.7	1.5	3.2	2.1	1.4	1.7	n.a.	1.2	1.1
1996	0.0	0.0	(7)0.0	**	0.7	1.5	2.4	3.3	1.6	2.3	2.1	1.4	1.7	n.a.	1.2	1.1
1997	0.0	0.0	(7)0.0	**	0.7	1.3	2.4	1.7	1.2	2.5	2.4	1.4	1.7	n.a.	1.2	1.1

Notes: See end of table for footnotes.

**Table 7. Education participation rates (1) - 1985-1997 (%), continued ...**  
**Time series table**

	Age (years)														(4) All	All
	(2) 5	6	7-14	15	16	17	18	19	15-19	20-24	25-29	30-64	15-64	(3)	ages	ages
															(5+ years)	(0+ years)
<i>Other publicly funded VET (administrative data)(excluded from total because of scope changes over time)(13)</i>																
1993	0.0	0.0	0.0	0.0	0.0	0.0	0.0	0.0	0.0	0.0	0.0	0.0	0.0	0.0	0.0	0.0
(14) 1994	0.0	0.0	0.0	n.p.	n.p.	n.p.	n.p.	n.p.	1.4	0.5	0.5	0.6	0.8	(7) 0.0	0.6	0.5
1995	0.0	0.0	0.0	0.3	0.6	0.8	0.9	0.9	0.7	1.0	1.2	1.1	1.4	0.3	1.0	1.0
1996	0.0	0.0	0.0	0.5	1.1	1.4	1.8	1.6	1.3	1.6	1.8	1.6	1.9	0.4	1.4	1.3
1997	0.0	0.0	0.0	0.8	2.4	2.7	2.7	2.3	2.2	2.1	2.1	1.8	2.4	0.5	1.8	1.7
<i>Higher education (15)</i>																
(16) 1985	0.0	0.0	0.0	0.0	0.0	3.1	14.7	15.5	6.5	9.1	4.1	1.7	3.5	(17) 0.0	2.5	2.3
1986	0.0	0.0	0.0	0.0	0.0	3.2	15.5	16.6	6.7	9.5	4.2	1.8	3.7	(7) 0.0	2.6	2.4
1987	0.0	0.0	0.0	0.0	0.0	3.5	16.6	17.5	7.3	9.7	3.9	1.6	3.6	(7) 0.0	2.6	2.4
1988	0.0	0.0	0.0	0.0	0.0	3.4	17.6	19.0	7.9	10.3	4.0	1.7	3.8	(7) 0.0	2.8	2.5
1989	0.0	0.0	0.0	0.0	0.0	3.7	18.4	19.5	8.5	10.1	3.6	1.6	3.7	0.0	2.7	2.5
1990	0.0	0.0	0.0	0.0	0.0	4.0	19.7	20.6	9.4	11.0	3.8	1.7	4.0	0.1	2.9	2.7
1991	0.0	0.0	0.0	0.0	0.0	4.0	20.9	22.5	10.0	12.2	4.2	1.9	4.4	0.0	3.2	2.9
1992	0.0	0.0	0.0	0.0	0.0	3.6	19.7	23.0	9.7	13.0	4.5	2.0	4.5	0.0	3.2	3.0
1993	0.0	0.0	0.0	0.0	0.0	3.7	20.3	22.6	9.6	13.5	4.7	2.0	4.6	0.0	3.3	3.0
1994	0.0	0.0	0.0	0.0	0.0	3.8	21.3	23.3	9.9	13.5	4.9	2.0	4.6	0.0	3.3	3.1
1995	0.0	0.0	0.0	0.0	0.0	4.1	22.2	23.8	10.2	13.6	5.1	2.0	4.6	0.0	3.3	3.1
1996	0.0	0.0	0.0	0.0	0.0	4.2	23.3	24.8	10.5	14.3	5.4	2.1	4.8	0.0	3.4	3.2
1997	0.0	0.0	0.0	0.0	0.0	4.0	23.6	25.8	10.7	15.0	5.4	2.1	4.8	0.0	3.5	3.2
<i>Total</i>																
1985	81.1	99.7	99.1	97.2	88.9	63.6	49.0	39.6	69.6	23.3	13.8	7.2	17.8	0.0	29.7	27.4
1986	79.3	99.6	99.2	98.3	83.0	65.7	51.7	42.9	70.5	24.8	14.8	7.7	18.7	0.0	29.8	27.6
1987	77.9	98.6	99.1	98.4	84.1	68.4	51.8	42.4	71.0	24.8	14.3	7.4	18.6	0.0	29.5	27.3
1988	76.9	99.5	99.0	97.9	88.3	72.2	54.2	44.6	72.3	25.1	14.3	7.6	18.8	0.0	29.4	27.2
1989	77.8	99.3	99.0	92.1	73.1	75.8	56.7	46.3	73.7	25.1	14.0	7.6	18.8	0.0	29.0	26.9
1990	76.6	99.5	98.8	99.7	92.6	77.4	60.2	48.7	75.4	27.2	14.5	7.8	19.4	0.1	29.2	27.1
1991	74.9	98.8	98.9	99.3	94.8	81.7	63.5	52.6	77.2	28.7	15.1	8.1	19.7	0.0	29.4	27.2
1992	74.9	98.5	98.8	99.2	95.1	83.6	65.7	53.9	78.8	30.5	15.8	8.5	20.1	0.0	29.8	27.6
1993	73.5	99.3	98.8	99.1	96.9	85.4	67.5	56.8	80.5	30.7	15.4	8.2	20.5	0.5	29.8	27.6
1994	74.1	98.8	99.0	97.2	95.7	84.4	65.2	52.9	78.6	29.5	15.0	7.4	19.2	0.3	28.7	26.6
1995	72.6	99.2	98.9	98.7	94.8	83.9	64.5	55.1	79.5	32.4	16.6	8.9	20.6	0.3	29.6	27.5
1996	72.6	99.3	98.9	98.2	96.8	85.1	65.0	55.7	80.0	32.3	17.1	9.2	20.7	0.5	29.7	27.6
1997	71.6	99.5	98.9	98.3	94.9	84.0	65.1	54.1	79.4	32.8	17.3	9.2	20.9	0.4	29.7	27.6

Notes: See end of table for footnotes.

**Table 7. Education participation rates (1) - 1985-1997 (%), continued ...**  
**Time series table**

Note: Data are State/Territory of participation (ie. institution), not State/Territory of origin. The above estimates differ slightly from some of ANTA's estimates in its '1997 Annual Report'. The two main reasons are: the above estimates include privately funded VET activity; and ANTA's estimates of publicly funded non-TAFE VET measure activity over the whole year. The above estimates of non-TAFE VET activity are point in time, from ABS surveys.

- (1) Higher education data include enabling and non-award courses. Higher education data only include basic nurse education students training in universities, not hospitals. Figures for 'other' educational institutions are estimates. A few TAFE students may be double counted using this method. TAFE figures include overseas students.
- (2) The count of five year old students includes all students five years and under.
- (3) The TAFE figures for 1985-1992 are for all students as a proportion of the 15-64 year old population. The TAFE and other publicly funded VET figures for 1993 to 1997 include students whose ages were unknown. In the higher education rates (1985 to 1988 only), all students (all ages) are included, but students less than 15 years old, or 65 years and over are small in number and have no observable effect on the rates.
- (4) Includes TAFE students whose ages were unknown. The estimates for the total attending 'other' institutions cover 15-64 year olds only. The total participation rate (all ages) is affected by the proportion of the population found in the age range 5-24 years, in which most schooling and education occurs.
- (5) The age reference date for schools data was 1/7 of the reference year. Data exclude part-time secondary school students because their numbers are not available by age. Data exclude home school students. Schools data include overseas students, which rose from about 0.1% to 0.5% of total students at school during the period 1985 to 1997 (Table 27, p.61, AIEF. (1998). *Overseas Student Statistics, 1997*. Canberra: DEETYA). The school participation rate for the 20-24 year old population includes those who are 25 years and above attending school, and those who did not specify their age.
- (6) Age is as at 30 June with a few (inconsequential) exceptions in the 'all ages' categories. For TAFE data between 1985 and 1992, the students whose ages were not stated have been allocated proportionally across the 15 to 64 year ages and age groups, according to the age distribution of students whose ages were known.
- (7) Estimate only. Data are not available for this age group.
- (8) In 1985, the ages 15 and 16 years were amalgamated in the TAFE student collection. These previously published participation rates are therefore estimates.
- (9) The number of students 65 years and over is included in the 30-64 year age group.
- (10) The 15 year old age group includes all students under 15 years.
- (11) 15-64 year olds only. The age reference date is student age at the time of the survey. Includes business colleges; industry skills centres; adult and community education centres; professional and industry associations; and other educational organisations. ABS survey estimates of other VET which are less than 1,500 have been suppressed, because the estimates are subject to sampling variability (relative standard error generally greater than 40%) too high for most practical purposes. Nevertheless, they are included in the totals. The Transition from Education to Work survey is used in preference to the Participation in Education survey. The former is run in May, while the latter is run in September and only covers 15-24 year olds. However, in 1996 and 1997, data for 15-64 year olds only were published in the Transition from Education to Work publication, so data for other ages (excepting 25-29 year olds and 30-64 year olds, which are unpublished data), have been gained from the Participation in Education survey publication. In 1995 and subsequent years, data became available on attendance throughout the entire preceding year (rather than just the survey month). However, for the sake of continuity, the survey month has been used as the reference period for the entire (other VET) time series. A stricter definition of education (in other VET) used in 1993 and 1994 means that the total numbers studying were lower than would have been the case prior to that, and after adjustments were made to the survey in 1995 to recapture people doing short courses. Includes overseas students.
- (12) Full-time only.
- (13) Age is as at 30 June. Includes a small number of overseas students.
- (14) Although AVETMISS was introduced this year, and the number of training provider locations rose considerably, the scope and coverage of NCVER's collection (ie. TAFE courses) remained largely unchanged.
- (15) The age reference date for higher education students was 30 June for every year except 1987, 1986 and some data for 1985, when it was 31 December of the preceding year. Higher education, from 1989-1997, includes non-overseas students only. Overseas students cannot be separately identified prior to 1989 in the higher education collection. It is estimated, however, that there were about 18,000 overseas students in higher education in 1988 (Table 15.1, p.92, DEETYA. (1998). *Higher Education Students Time Series Tables, Australia, 1998*. Canberra: AGPS). The AIEF estimate (2,393 overseas students) was not used because its scope was different from that of the data in the table (Table 27, p.61, AIEF. (1998). *Overseas Student Statistics, 1997*. Canberra: DEETYA). Additional exlanatorrv footnoting can be found on the higher education sector specific tables in this publication.
- (16) Includes CAEs.
- (17) Includes those who did not state their age. Excludes those aged 65-69 years. Excludes former CAEs of binary system.

**Table 7. Education participation rates (1) - 1985-1997 (%), continued ...**  
**Time series table**

*Source:*

Table 8, p.40; Table 10, p.51. ABS. (1986). *National Schools Statistics Collection, 1985* (Cat. No. 4221.0). Canberra: AGPS:  
 Table 8, p.42; Table 10, p.53. ABS. (1987). *National Schools Statistics Collection, 1986* (Cat. No. 4221.0). Canberra: AGPS:  
 Table 7, p.32. ABS. (1988). *National Schools Statistics Collection, 1987* (Cat. No. 4221.0). Canberra: AGPS:  
 Table 7, p.28. ABS. (1989). *National Schools Statistics Collection, 1988* (Cat. No. 4221.0). Canberra: AGPS:  
 Table 7, p.28. ABS. (1990). *Schools, Australia, 1989* (Cat. No. 4221.0). Canberra: AGPS:  
 Table 7, p.28. ABS. (1991). *Schools, Australia, 1990* (Cat. No. 4221.0). Canberra: AGPS:  
 Table 7, p.28. ABS. (1992). *Schools, Australia, 1991* (Cat. No. 4221.0). Canberra: AGPS:  
 Table 7, p.28. ABS. (1993). *Schools, Australia, 1992* (Cat. No. 4221.0). Canberra: AGPS:  
 Table 8, p.30. ABS. (1994). *Schools, Australia, 1993* (Cat. No. 4221.0). Canberra: AGPS:  
 Table 8, p.30; Table 19, p.62. ABS. (1995). *Schools, Australia, 1994* (Cat. No. 4221.0). Canberra: AGPS:  
 Table 8, p.30; Table 20, p.64. ABS. (1996). *Schools, Australia, 1995* (Cat. No. 4221.0). Canberra: AGPS:  
 Table 8, p.34; Table 20, p.68. ABS. (1997). *Schools, Australia, 1996* (Cat. No. 4221.0). Belconnen: AGPS:  
 p.67, 88; Table 28, p.36; Table 54, p.70. ABS. (1998). *Schools, Australia, 1997* (Cat. No. 4221.0). Belconnen: ABS:  
 Table 1, p.10; Table 2.3, p.13. DEET. (1994). *Education Participation Rates, Australia, 1993*. Canberra: AGPS:  
 NCVFR unpublished data; Table T1, p.12. NCVFR (1993). *Selected TAFE Statistics, 1992*. Leabrook, SA: NCVFR:  
 Table AUS-08, p.31. NCVER (1994). *Selected Vocational Education & Training Statistics, 1993*. Leabrook, SA: NCVER:  
 Table 1, p.25. NCVER. (1995). *Selected Vocational Education and Training Statistics, 1994*. Leabrook, SA: NCVER:  
 p.42. ABS. (1998). *Education and Training Experience, Australia, 1997* (Cat. No. 6278.0). Canberra: AusInfo.  
 Table 6, p.8. ABS. (1986). *Transition From Education to Work, Australia, May 1985* (Cat. No. 6227.0). AGPS: Canberra:  
 Table 6, p.8. ABS. (1986). *Transition From Education to Work, Australia, May 1986* (Cat. No. 6227.0). AGPS: Canberra:  
 Table 8, p.11. ABS. (1988). *Transition From Education to Work, Australia, May 1987* (Cat. No. 6227.0). ABS: Canberra:  
 Table 8, p.9. ABS. (1988). *Transition From Education to Work, Australia, May 1988* (Cat. No. 6227.0). ABS: Canberra:  
 Tables 7-8, pp.9-11. ABS. (1990). *Transition From Education to Work, Australia, May 1989* (Cat. No. 6227.0). Canberra: AGPS:  
 Tables 7-8, pp.10-12. ABS. (1990). *Transition From Education to Work, May 1990* (Cat. No. 6227.0). Canberra: AGPS:  
 Tables 2-3, pp.4-6. ABS. (1991). *Transition From Education to Work, Australia, May 1991* (Cat. No. 6227.0). Canberra: AGPS:  
 Table 2, p.4. ABS. (1992). *Transition From Education to Work, Australia, May 1992* (Cat. No. 6227.0). Canberra: AGPS:  
 Table 2, p.4. ABS. (1993). *Transition From Education to Work, Australia, May 1993* (Cat. No. 6227.0). Canberra: AGPS:  
 Tables 1-2, pp.5-7. ABS. (1994). *Transition From Education to Work, Australia, May 1994* (Cat. No. 6227.0). Canberra: AGPS:  
 Tables 2 & 8, pp.6 & 13. ABS. (1995). *Transition From Education to Work, May 1995* (Cat. No. 6227.0.40.001). Canberra: AGPS:  
 Tables 1-2, pp.7-8. ABS. (1997). *Participation in Education, Australia, September 1996* (Cat. No. 6272.0). Belconnen: AGPS:  
 Table 3, p.7. ABS. (1996). *Transition From Education to Work, Australia, May 1996* (Cat. No. 6227.0). Belconnen: ACT: ABS:  
 Tables 1-2, pp.7-8. ABS. (1998). *Participation in Education, Australia, September 1997* (Cat. No. 6272.0). Belconnen: ABS:  
 Table 3, p.7. ABS. (1997). *Transition From Education to Work, Australia, May 1997* (Cat. No. 6227.0). Belconnen: ACT: ABS:  
 ABS, Transition from Education to Work survey, unpublished data;  
 Table 3.3, p.16. DEET. (1994). *Education Participation Rates, Australia, 1993*. Canberra: ACT: AGPS:  
 Table 4.1, p.16. DEETYA. (1998). *Higher Education Students Time Series Tables, Australia, 1998*. Canberra: AGPS:  
 DEETYA, Higher Education Student Statistics collection, unpublished data.

## INTERNATIONAL COMPARISONS

**Table 8. Participation in formal education - 1995 (%)<sup>(1)</sup>**  
International comparisons

	Age (years)																		
	5	6	14	15	16	17	18	19	20	21	22	23	24	25	26	27	28	29	
Australia (2)	92.1	100.0	100.0	98.1	96.0	83.9	65.7	52.8	46.7	33.8	26.1	22.3	20.4	18.7	17.4	15.8	14.8	14.3	
Austria	90.2	98.8	100.0	96.6	93.6	87.7	62.5	35.7	25.8	22.1	17.9	16.3	14.9	15.1	12.1	10.2	8.3	6.9	
Belgium	99.7	100.0	99.7	100.0	100.0	100.0	87.5	75.3	66.7	49.2	38.1	27.6	19.9	14.9	11.9	9.7	7.9	6.5	
Canada	96.8	100.0	98.6	98.1	94.0	79.1	61.9	52.6	50.4	43.4	31.8	23.6	17.9	14.1	11.4	9.7	8.5	7.4	
Czech Republic	92.7	100.0	100.0	98.7	96.9	71.7	41.9	26.1	20.3	20.1	18.1	11.1	5.1	3.1	2.5	2.2	2.0	1.6	
Denmark	82.3	96.9	98.3	97.8	93.8	81.7	71.7	55.2	42.4	39.8	35.9	32.5	27.9	23.3	18.8	14.4	11.2	9.2	
Finland	35.0	57.7	99.3	99.4	92.6	90.5	81.2	41.5	42.9	48.6	43.8	38.7	31.9	26.4	21.0	17.2	14.3	11.6	
Germany	79.2	86.9	97.9	98.0	96.9	93.4	84.2	65.3	45.1	33.5	30.5	25.2	21.4	18.5	15.5	13.2	9.3	10.1	
Greece	79.4	94.4	91.0	86.1	79.0	55.8	47.8	45.0	36.3	29.4	17.4	12.9	7.8	8.3	5.9	4.9	2.2	1.7	
Hungary	97.3	98.9	98.6	93.1	88.2	71.1	46.3	29.9	25.0	18.1	14.7	11.6	8.4	6.2	4.6	3.4	2.5	1.9	
Ireland	98.2	100.0	98.0	94.4	89.7	80.0	72.9	47.1	37.3	19.7	15.3	12.8	10.5	8.4	6.8	5.5	4.6	3.8	
Mexico	80.7	100.0	67.6	52.0	39.4	37.0	24.7	15.4	13.6	11.5	10.2	9.4	9.1	4.1	2.7	2.7	2.7	2.7	
Netherlands	99.2	99.3	99.2	99.0	98.3	93.3	82.5	70.1	59.6	47.5	37.6	29.7	22.6	16.5	13.9	10.1	8.3	7.3	
NZ	100.0	100.0	100.0	97.2	99.9	76.8	56.6	47.8	44.5	39.5	26.2	19.0	15.0	12.4	11.4	10.7	10.2	9.8	
Norway	71.5	90.6	99.3	99.8	95.0	90.3	83.0	49.2	43.0	40.8	38.1	33.8	27.1	21.4	16.3	13.1	10.5	8.6	
Portugal	64.6	100.0	89.3	87.5	72.8	72.8	55.4	45.1	44.1	47.1	25.3	21.7	17.1	13.6	11.0	8.8	6.6	4.3	
Spain	100.0	100.0	100.0	94.2	82.7	74.8	62.9	53.1	49.7	39.8	34.2	24.5	16.5	11.2	7.5	6.0	4.7	3.8	
Sweden	63.4	92.2	99.3	96.4	97.0	95.8	87.9	35.3	30.6	30.9	30.1	27.9	24.2	20.6	17.0	14.4	12.6	11.0	
Switzerland	78.9	98.9	98.5	96.8	86.0	82.5	76.3	56.2	33.6	24.7	21.4	19.3	17.1	14.0	11.3	8.9	7.2	5.9	
Turkey	14.3	82.7	55.7	48.2	40.5	25.7	16.9	16.8	12.1	11.3	9.8	8.0	6.5	5.2	4.3	3.3	3.1	2.7	
UK	99.8	99.3	98.3	98.5	86.9	74.7	53.5	45.1	39.2	32.8	21.6	16.9	14.4	12.6	11.6	10.9	10.2	9.7	
USA	100.0	99.8	100.0	98.1	89.9	78.6	55.6	42.0	35.4	35.0	25.1	23.0	20.9	16.2	13.8	11.2	9.9	8.0	
<b>Country mean</b>	<b>82.5</b>	<b>95.3</b>	<b>94.9</b>	<b>92.2</b>	<b>86.8</b>	<b>77.6</b>	<b>62.7</b>	<b>45.6</b>	<b>38.4</b>	<b>32.7</b>	<b>25.9</b>	<b>21.3</b>	<b>17.1</b>	<b>13.9</b>	<b>11.3</b>	<b>9.4</b>	<b>7.8</b>	<b>6.8</b>	

(1) Excludes adult education and training.

The country means for 7, 8, 9, 10, 11, 12, and 13 year olds are all around 97-100%. Turkey and Mexico are the only OECD countries with relatively low participation rates in those ages.

All publicly funded vocational education and training in Australia is included, regardless of course duration.

(2) The figure for 17 year olds given in the source publication (93.5%), is less accurate. Differences between this table and Table 7 are due to methodological differences, particularly the age reference date of participants (higher education sector); and differing data sources (especially VET). The former problem will be solved in the 1999 edition of the source publication (below).

Source: Table 1.B, p.76, OECD. (1998). *Education Policy Analysis, 1998*. Paris: OECD.

**Table 9. Participation in education - 1996 (%)<sup>(1)</sup>**  
**International comparisons**

	Age group (years)					40 and over	No. of years at which over 90% of the population are enrolled	Age range at which over 90% of the population are enrolled
	5-29 <sup>(2)</sup>	5-14	15-19	20-29	30-39			
Australia (3)	76.7	96.6	82.6	24.5	13.6	5.3	12	6-17
Austria	58.0	98.6	75.7	16.8	2.7	0.3	12	5-16
Belgium	70.8	98.9	92.1	n.a.	n.a.	n.a.	15	3-17
Canada	68.2	99.2	78.6	21.4	4.7	1.2	12	5-16
Czech Republic	56.3	98.8	72.2	11.1	0.2	n.a.	11	6-16
Denmark	63.9	96.7	79.6	26.0	4.9	0.7	11	6-16
Finland	69.1	89.5	81.8	29.6	6.8	1.2	11	7-17
France	64.5	100.1	88.3	19.1	n.a.	n.a.	15	3-17
Germany	61.8	96.5	87.9	20.5	2.5	0.1	11	7-17
Greece	53.0	94.1	72.0	12.0	0.1	0.1	9	6-14
Hungary	56.6	99.7	68.5	11.7	n.a.	n.a.	11	5-15
Iceland	70.5	98.4	79.7	24.5	3.8	0.8	10	6-15
Ireland	64.9	99.6	79.3	14.6	n.a.	n.a.	11	5-15
Italy	53.8	n.a.	n.a.	n.a.	n.a.	n.a.	10	4-13
Japan	57.0	101.1	n.a.	n.a.	n.a.	n.a.	14	4-17
Korea	55.8	92.3	78.3	16.0	0.6	n.a.	11	6-16
Luxembourg	52.3	n.a.	n.a.	n.a.	n.a.	n.a.	n.a.	n.a.
Mexico	51.9	94.0	35.6	8.4	0.5	0.1	7	6-12
Netherlands	65.3	99.2	88.5	23.7	3.8	0.7	14	4-17
New Zealand	69.3	100.2	75.3	19.4	8.1	2.6	13	4-16
Norway	65.4	95.4	83.8	25.2	4.9	1.0	12	6-17
Poland	63.6	90.8	80.9	19.3	n.a.	n.a.	12	6-17
Portugal	62.0	101.2	67.5	20.5	3.6	0.5	10	6-15
Spain	63.0	104.2	73.8	21.8	2.2	0.2	12	4-15
Sweden	69.8	96.1	83.3	23.6	8.9	1.8	13	6-18
Switzerland	59.5	97.5	80.6	15.8	n.a.	n.a.	10	6-15
United Kingdom	66.8	98.8	72.1	17.5	8.4	3.3	12	4-15
United States	68.8	101.2	72.9	20.0	5.9	7.7	11	5-15
<b>Country mean</b>	<b>62.8</b>	<b>97.6</b>	<b>77.2</b>	<b>19.3</b>	<b>4.5</b>	<b>1.5</b>	<b>12</b>	

- (1) Differences in reference dates for student and population ages and collections can lead to apparent participation rates in excess of 100%.
- (2) Five years and over as a percentage of the population aged 5-29.
- (3) Publicly funded VET in Australia is included, regardless of course duration, with insignificant exceptions. Private VET, open learning, and private university participation in Australia are excluded. The 15-19 year old rate differs slightly from that in Table 7 (at 80.0%) due to small methodological differences in the calculations, including differing data sources (especially VET), and age reference dates of higher education students. This latter problem will be solved in the 1999 edition of the source publication (below).

Source: Table C1.2, p.160, OECD. (1998). *Education at a Glance: OECD Indicators, 1998*. Paris: OECD.

## SCHOOL SECTOR

**Table 10. School participation rates, by year (%)**

	Age (years)									
	1985	1989	1990	1991	1992	1993	1994	1995	1996	1997
<i>Males</i>										
15	89.7	90.9	92.0	92.5	92.7	92.5	91.0	91.9	91.0	91.5
16	64.2	69.5	72.8	78.1	79.0	78.8	77.4	75.7	77.0	77.5
17	36.7	45.6	46.7	54.2	58.2	58.2	56.5	55.2	55.3	56.7
18	8.1	10.1	11.2	13.2	15.5	15.0	13.8	13.0	12.4	12.4
19	1.4	2.1	2.1	2.7	3.1	2.9	2.7	2.3	2.2	2.0
<b>15-19</b>	<b>40.9</b>	<b>42.8</b>	<b>43.1</b>	<b>46.2</b>	<b>48.3</b>	<b>48.3</b>	<b>47.5</b>	<b>47.1</b>	<b>47.5</b>	<b>48.2</b>
<i>Females</i>										
15	90.5	92.8	93.9	98.7	93.9	93.9	93.5	93.7	93.3	93.7
16	66.3	75.9	78.8	82.6	82.9	83.8	82.6	82.1	83.0	82.8
17	39.3	51.4	53.8	56.9	62.4	63.1	63.0	62.0	63.1	64.0
18	6.6	9.0	9.9	11.7	13.5	12.9	11.9	11.6	10.9	11.3
19	1.1	1.7	1.8	2.2	2.7	2.5	2.1	1.9	1.8	1.7
<b>15-19</b>	<b>41.6</b>	<b>45.1</b>	<b>45.4</b>	<b>47.8</b>	<b>49.4</b>	<b>49.9</b>	<b>49.7</b>	<b>49.7</b>	<b>50.2</b>	<b>50.8</b>
<i>Persons</i>										
15	90.1	91.8	92.9	93.1	93.2	93.1	92.2	92.8	92.1	92.6
16	65.3	72.6	75.7	80.3	80.9	81.3	80.0	78.8	79.9	80.1
17	38.0	48.5	50.2	56.9	60.3	60.6	59.7	58.5	59.1	60.2
18	7.3	9.5	10.6	12.5	14.5	14.0	12.9	12.3	11.7	11.9
19	1.3	1.9	2.0	2.5	2.9	2.7	2.4	2.1	2.0	1.8
<b>15-19</b>	<b>41.3</b>	<b>43.9</b>	<b>44.2</b>	<b>47.0</b>	<b>48.8</b>	<b>49.1</b>	<b>48.6</b>	<b>48.4</b>	<b>48.8</b>	<b>49.5</b>

Note: This table excludes part-time secondary school students, which are a very small percentage of the total.

Source: Table B3, p.47, DEET. (1993). *Retention and Participation in Australian Schools, 1967 to 1992*. Canberra: AGPS; Table 16, p.54, ABS. (1990). *Schools, Australia, 1989* (Cat. No. 4221.0). Canberra: AGPS; Table 17, p.57, ABS. (1991, 1992, 1993). *Schools Australia, 1990, 1991, 1992* (Cat. No. 4221.0). Canberra: AGPS; Table 19, p.62, ABS. (1994, 1995). *Schools, Australia, 1993, 1994* (Cat. No. 4221.0). Canberra: AGPS; Table 20, p.64, ABS. (1996). *Schools, Australia, 1995* (Cat. No. 4221.0). Canberra: AGPS; Table 20, p.68, ABS. (1997). *Schools, Australia, 1996* (Cat. No. 4221.0). Belconnen: AGPS; Table 54, p.70, ABS. (1998). *Schools, Australia, 1997* (Cat. No. 4221.0). Belconnen: ABS.

**Table 11. Apparent school retention rates, by year (%)**

	State/Territory												
	1985	1986	1987	1988	1989	1990	1991	1992	1993	1994	1995	1996	1997
<i>Males</i>													
Year 10	93.3	93.2	94.6	95.2	96.0	97.1	98.2	98.5	97.5	96.0	r95.5	95.7	96.3
Year 11	64.6	65.7	68.1	72.4	73.0	76.4	82.9	85.1	84.5	82.0	r79.5	79.5	80.4
Year 12	43.5	45.6	49.4	53.4	55.5	58.3	66.1	72.5	71.9	69.6	r66.7	65.9	66.2
<i>Females</i>													
Year 10	94.3	95.1	95.8	97.3	98.1	99.3	99.4	99.6	99.1	97.9	r97.4	97.8	98.2
Year 11	68.9	70.9	74.0	78.7	81.5	84.8	89.2	90.7	90.5	88.9	r87.2	87.6	88.6
Year 12	49.5	52.1	57.0	61.8	65.2	69.9	76.7	82.0	81.4	79.9	r77.9	77.0	77.8
<i>Persons</i>													
Year 10	93.8	94.1	95.2	96.2	97.1	98.2	98.8	99.1	98.3	97.0	96.4	96.7	97.2
Year 11	66.7	68.3	71.0	75.5	77.2	80.5	86.0	87.8	87.4	85.3	83.3	83.4	84.4
Year 12 - Aust.	46.4	48.7	53.1	57.6	60.3	64.0	71.3	77.1	76.6	74.6	72.2	71.3	71.8
- NSW	41.7	44.4	47.1	51.3	54.4	56.8	61.4	68.5	70.6	70.4	69.1	67.7	67.2
- Vic.	45.4	46.8	52.5	56.9	60.5	65.4	75.7	81.1	79.1	77.3	75.0	75.3	76.3
- Qld	55.1	57.5	62.5	66.9	69.7	74.0	79.6	85.0	82.9	78.8	76.3	76.5	77.9
- WA	47.5	50.3	54.4	59.2	61.8	64.2	71.1	72.8	75.6	73.4	71.2	70.7	71.6
- SA	51.2	54.8	60.2	66.6	66.7	72.1	83.5	92.7	86.3	81.7	71.4	68.4	66.9
- Tas.	28.7	30.3	33.0	37.6	39.7	44.7	52.6	60.2	60.6	58.3	59.7	53.1	58.6
- NT	30.1	34.1	40.7	45.0	42.7	47.7	57.5	56.7	47.5	42.9	42.7	41.0	42.0
- ACT	77.1	77.7	79.0	81.4	85.6	86.9	95.6	97.2	94.2	93.3	91.1	91.3	91.6

Note: This table excludes part-time secondary school students, which are a very small percentage of the total.

Source: Tables 14 and 15, p.55, ABS. (1991). *Schools, Australia, 1990* (Cat. No. 4221.0). Canberra: AGPS;  
 Tables 16 and 17, p.60, ABS. (1995). *Schools, Australia, 1994* (Cat. No. 4221.0). Canberra: AGPS;  
 Tables 51 and 52, p.69, ABS. (1998). *Schools, Australia, 1997* (Cat. No. 4221.0). Belconnen: ABS.

**Table 12. School participation rates - 1985 (%)<sup>(1)</sup>**

<i>Age</i>	<i>NSW</i>	<i>Vic.</i>	<i>Qld</i>	<i>WA</i>	<i>SA</i>	<i>Tas</i>	<i>NT</i>	<i>ACT (2)</i>	<i>Aust.</i>
<i>Male (3)</i>									
15	91.4	92.9	83.5	83.4	89.0	96.0	79.5	101.8	89.7
16	62.0	74.5	59.5	54.7	62.7	48.4	52.6	88.1	64.2
17	40.5	43.4	29.5	26.8	25.5	23.7	23.3	69.0	36.7
18	9.4	9.4	5.7	4.4	5.8	5.0	6.3	19.2	8.1
19	1.8	4.4	2.5	3.6	2.7	3.1	1.7	6.2	1.4
<b>15-19</b>	<b>41.6</b>	<b>46.0</b>	<b>37.4</b>	<b>35.6</b>	<b>37.8</b>	<b>37.4</b>	<b>32.4</b>	<b>57.3</b>	<b>40.9</b>
<i>Female (3)</i>									
15	92.9	93.3	83.8	84.4	89.4	97.2	77.2	100.0	90.5
16	61.5	78.9	62.2	56.7	65.8	50.9	56.4	88.1	66.3
17	43.9	49.7	29.0	25.9	24.4	26.6	20.4	70.7	39.3
18	8.0	8.0	3.6	3.5	4.6	3.5	5.6	15.6	6.6
19	1.4	4.1	2.3	3.1	2.0	3.0	2.1	4.8	1.1
<b>15-19</b>	<b>42.3</b>	<b>47.7</b>	<b>37.4</b>	<b>35.6</b>	<b>37.8</b>	<b>37.5</b>	<b>33.0</b>	<b>55.3</b>	<b>41.6</b>
<i>Persons (3)</i>									
15	92.2	93.1	83.6	83.8	89.2	96.6	78.4	100.9	90.1
16	61.7	76.6	60.8	55.7	64.2	49.6	54.5	88.1	65.3
17	42.1	46.5	29.3	26.3	25.0	25.1	22.0	69.8	38.0
18	8.7	8.7	4.7	3.9	5.2	4.3	6.0	17.4	7.3
19	1.6	4.2	2.4	3.3	2.3	3.1	1.8	5.5	1.3
<b>15-19</b>	<b>41.9</b>	<b>46.8</b>	<b>37.4</b>	<b>35.6</b>	<b>37.8</b>	<b>37.4</b>	<b>32.7</b>	<b>56.3</b>	<b>41.3</b>

- (1) The age reference date was 1/7/85. The collection date was 1/7/85 (or as near as possible to that date) (p.1, ABS, 1986).  
This table excludes part-time secondary school students, which are a very small percentage of the total.
- (2) Age participation rates in the ACT sometimes exceed 100%. This is due to enrolment in ACT secondary schools of students who live in surrounding NSW areas.
- (3) The number of 19 year old students includes students 19 years and over, and those whose ages were unspecified, except in the case of the column headed 'Australia' (p.47, DEET, 1993).

Source: Tables 7-10, pp.30-51, ABS. (1986). *National Schools Statistics Collection, Australia, 1985* (Cat. No. 4221.0).  
Canberra: AGPS; Table B3, p.47, DEET. (1993). *Retention and Participation in Australian Schools, 1967 to 1992*. Canberra: AGPS.

**Table 13. School participation rates - 1990 (%)<sup>(1)</sup>**

<i>Age</i>	<i>NSW</i>	<i>Vic.</i>	<i>Qld</i>	<i>WA</i>	<i>SA</i>	<i>Tas</i>	<i>NT</i>	<i>ACT (2)</i>	<i>Aust.</i>
<i>Male</i>									
15	93.1	93.9	88.3	86.4	92.1	99.2	82.8	104.1	92.0
16	70.4	80.7	70.4	63.0	74.3	61.8	56.5	98.7	72.8
17	51.3	56.8	37.3	29.9	33.8	37.3	30.7	79.7	46.7
18	12.8	14.0	7.3	5.9	8.1	8.7	10.6	24.5	11.2
19	1.9	2.9	1.5	2.0	1.8	1.5	2.7	4.2	2.1
<b>15-19</b>	<b>44.2</b>	<b>47.3</b>	<b>39.4</b>	<b>35.6</b>	<b>39.8</b>	<b>40.6</b>	<b>35.5</b>	<b>58.6</b>	<b>43.1</b>
<i>Female</i>									
15	94.3	96.9	90.6	86.6	94.3	99.4	86.8	108.1	93.9
16	75.9	87.8	76.9	69.4	77.9	66.8	64.9	100.9	78.8
17	59.5	69.8	39.6	33.9	33.1	45.8	35.2	80.7	53.8
18	11.4	13.0	6.1	5.4	6.0	7.5	8.9	19.3	9.9
19	1.6	2.4	1.3	1.9	1.6	2.0	2.5	2.6	1.8
<b>15-19</b>	<b>46.7</b>	<b>51.1</b>	<b>41.2</b>	<b>37.6</b>	<b>40.0</b>	<b>42.9</b>	<b>36.9</b>	<b>57.2</b>	<b>45.4</b>
<i>Persons</i>									
15	93.7	95.4	89.4	86.5	93.1	99.3	84.7	106.0	92.9
16	73.1	84.2	73.6	66.1	76.0	64.2	60.4	99.8	75.7
17	55.3	63.1	38.4	31.8	33.4	41.6	32.8	80.2	50.2
18	12.1	13.5	6.7	5.7	7.1	8.1	9.8	21.9	10.6
19	1.8	2.6	1.4	1.9	1.7	1.7	2.6	3.4	2.0
<b>15-19</b>	<b>45.4</b>	<b>49.2</b>	<b>40.3</b>	<b>36.6</b>	<b>39.9</b>	<b>41.7</b>	<b>36.2</b>	<b>57.9</b>	<b>44.2</b>

(1) The age reference date was 1/7/90. The collection date was as near as possible to 1/7/90 as determined by each administrative system (p.76, ABS, 1991). This table excludes part-time secondary school students - a very small proportion of the total.

(2) Age participation rates in the ACT sometimes exceed 100%. This is due to enrolment in ACT secondary schools of students who live in surrounding NSW areas.

Source: Table 17, p.57, ABS, (1991). *Schools, Australia, 1990* (Cat. No. 4221.0). Canberra, ACT: AGPS.

**Table 14. School participation rates - 1995 (%)<sup>(1)</sup>**

<i>Age</i>	<i>NSW</i>	<i>Vic.</i>	<i>Qld</i>	<i>WA</i>	<i>SA</i>	<i>Tas</i>	<i>NT</i>	<i>ACT (2)</i>	<i>Aust.</i>
<i>Male</i>									
15	93.2	93.7	87.6	87.9	91.5	99.2	79.7	111.5	91.9
16	74.5	82.4	72.7	68.4	75.9	65.2	64.8	102.1	75.7
17	61.0	67.0	43.8	36.2	41.0	49.6	39.1	88.2	55.2
18	15.5	16.2	7.6	6.6	7.9	12.2	12.6	36.8	13.0
19	2.1	3.0	1.6	2.1	2.1	2.9	2.9	3.8	2.3
<b>15-19</b>	<b>49.0</b>	<b>51.7</b>	<b>42.1</b>	<b>40.0</b>	<b>43.3</b>	<b>46.5</b>	<b>40.2</b>	<b>64.2</b>	<b>47.1</b>
<i>Female</i>									
15	94.3	95.3	91.0	90.7	93.7	96.6	84.5	107.6	93.7
16	80.4	88.9	79.7	75.3	81.8	74.4	70.2	101.3	82.1
17	69.8	78.7	45.6	39.6	42.5	56.3	43.8	92.6	62.0
18	14.1	15.1	6.3	6.4	6.4	10.5	11.6	24.9	11.6
19	1.8	2.4	1.4	1.8	2.1	1.4	4.2	2.9	1.9
<b>15-19</b>	<b>51.7</b>	<b>55.2</b>	<b>44.1</b>	<b>42.4</b>	<b>44.5</b>	<b>48.8</b>	<b>42.5</b>	<b>61.5</b>	<b>49.7</b>
<i>Persons</i>									
15	93.7	94.5	89.3	89.3	92.6	98.0	82.0	109.6	92.8
16	77.4	85.6	76.1	71.8	78.8	69.7	67.2	101.7	78.8
17	65.3	72.7	44.7	37.8	41.7	52.9	41.3	90.4	58.5
18	14.8	15.6	7.0	6.5	7.2	11.4	12.1	30.9	12.3
19	2.0	2.7	1.5	2.0	2.1	2.2	3.5	3.4	2.1
<b>15-19</b>	<b>50.3</b>	<b>53.4</b>	<b>43.1</b>	<b>41.2</b>	<b>43.9</b>	<b>47.6</b>	<b>41.3</b>	<b>62.9</b>	<b>48.4</b>

(1) The age reference date was 1/7/95. The collection date was 4/8/95, except for the NT (which was 18/8/95) (p.82, ABS, 1996). This table excludes part-time secondary school students, which are a very small percentage of the total.

(2) Age participation rates in the ACT sometimes exceed 100%. This is due to enrolment in ACT secondary schools of students who live in surrounding NSW areas.

Source: Table 20, p.64, ABS, (1996). *Schools, Australia, 1995* (Cat. No. 4221.0). Canberra, ACT: AGPS.

**Table 15. School participation rates - 1996 (%)<sup>(1)</sup>**

<i>Age</i>	<i>NSW</i>	<i>Vic.</i>	<i>Qld</i>	<i>WA</i>	<i>SA</i>	<i>Tas</i>	<i>NT</i>	<i>ACT (2)</i>	<i>Aust.</i>
<i>Male</i>									
15	92.5	93.1	87.3	87.5	89.5	95.7	75.2	108.1	91.0
16	75.6	83.8	74.0	70.1	77.7	68.8	59.4	105.2	77.0
17	60.6	67.7	44.2	36.2	43.6	45.8	37.3	90.4	55.3
18	14.8	15.4	7.6	6.0	7.5	10.2	13.1	33.5	12.4
19	1.9	2.6	1.7	1.7	2.2	2.2	3.3	5.7	2.2
<b>15-19</b>	<b>49.2</b>	<b>51.9</b>	<b>43.1</b>	<b>40.3</b>	<b>44.3</b>	<b>45.9</b>	<b>38.4</b>	<b>64.3</b>	<b>47.5</b>
<i>Female</i>									
15	93.4	95.3	91.0	90.9	92.0	97.1	80.5	108.1	93.3
16	81.5	89.3	80.8	77.1	83.6	73.6	67.7	105.5	83.0
17	69.5	79.3	47.2	41.7	49.1	55.9	44.5	93.3	63.1
18	13.1	14.0	6.4	5.9	6.1	9.1	9.9	26.0	10.9
19	1.7	2.3	1.4	1.7	1.6	1.7	3.0	2.4	1.8
<b>15-19</b>	<b>51.8</b>	<b>55.6</b>	<b>45.0</b>	<b>43.3</b>	<b>46.6</b>	<b>49.0</b>	<b>41.8</b>	<b>62.5</b>	<b>50.2</b>
<i>Persons</i>									
15	93.0	94.2	89.1	89.1	90.7	96.4	77.7	108.1	92.1
16	78.4	86.5	77.3	73.5	80.6	71.1	63.2	105.4	79.9
17	64.9	73.3	45.7	38.9	46.3	50.7	40.5	91.8	59.1
18	14.0	14.7	7.0	5.9	6.8	9.7	11.6	29.8	11.7
19	1.8	2.5	1.5	1.7	1.9	2.0	3.1	4.0	2.0
<b>15-19</b>	<b>50.5</b>	<b>53.7</b>	<b>44.0</b>	<b>41.8</b>	<b>45.4</b>	<b>47.4</b>	<b>40.0</b>	<b>63.4</b>	<b>48.8</b>

(1) The age reference date was 1/7/96. The collection date was 2/8/96, except for the NT (which was 16/8/96) (p.86, ABS, 1997). This table excludes part-time secondary school students, which are a very small percentage of the total.

(2) Age participation rates in the ACT sometimes exceed 100%. This is due to enrolment in ACT secondary schools of students who live in surrounding NSW areas.

Source: Table 20, p.68, ABS, (1997), *Schools, Australia, 1996* (Cat. No. 4221.0), Belconnen, ACT: AGPS.

**Table 16. School participation rates - 1997 (%)<sup>(1)</sup>**

<i>Age</i>	<i>NSW</i>	<i>Vic.</i>	<i>Qld</i>	<i>WA</i>	<i>SA</i>	<i>Tas</i>	<i>NT</i>	<i>ACT (2)</i>	<i>Aust.</i>
<i>Male</i>									
15	91.8	93.8	87.7	90.6	91.3	96.5	80.3	105.8	91.5
16	75.6	83.8	75.5	71.0	79.4	71.9	63.4	97.7	77.5
17	60.6	67.7	46.7	37.9	50.1	52.5	36.8	88.3	56.7
18	14.6	16.5	7.1	5.9	7.6	12.4	10.7	29.2	12.4
19	2.0	2.4	1.5	1.8	1.7	2.3	3.1	3.7	2.0
<b>15-19</b>	<b>49.4</b>	<b>52.3</b>	<b>44.3</b>	<b>41.7</b>	<b>46.3</b>	<b>48.8</b>	<b>38.8</b>	<b>61.8</b>	<b>48.2</b>
<i>Female</i>									
15	93.3	95.8	91.6	92.2	93.4	98.2	80.1	105.1	93.7
16	80.1	88.9	82.0	77.4	83.5	76.6	73.3	99.3	82.8
17	69.6	79.6	48.7	42.0	55.3	59.0	42.2	88.8	64.0
18	13.5	14.8	6.2	5.9	6.3	10.9	11.2	24.9	11.3
19	1.6	1.9	1.3	1.7	1.6	2.0	2.7	2.8	1.7
<b>15-19</b>	<b>51.9</b>	<b>56.0</b>	<b>46.3</b>	<b>44.0</b>	<b>48.5</b>	<b>51.2</b>	<b>42.9</b>	<b>61.0</b>	<b>50.8</b>
<i>Persons</i>									
15	92.5	94.8	89.6	91.4	92.3	97.3	80.2	105.5	92.6
16	77.8	86.3	78.6	74.1	81.4	74.3	68.1	98.5	80.1
17	65.0	73.5	47.7	39.9	52.6	55.7	39.4	88.5	60.2
18	14.1	15.7	6.7	5.9	7.0	11.7	10.9	27.0	11.9
19	1.8	2.2	1.4	1.7	1.7	2.2	2.9	3.2	1.8
<b>15-19</b>	<b>50.6</b>	<b>54.1</b>	<b>45.3</b>	<b>42.8</b>	<b>47.4</b>	<b>50.0</b>	<b>40.7</b>	<b>61.4</b>	<b>49.5</b>

(1) The age reference date was 1/7/97. The collection date was 1/8/97, except for the NT (which was 15/8/97) (p.88, ABS, 1998). This table excludes part-time secondary school students, which are a very small percentage of the total.

(2) Age participation rates in the ACT sometimes exceed 100%. This is due to enrolment in ACT secondary schools of students who live in surrounding NSW areas.

Source: Table 54, p.70, ABS, (1998). *Schools, Australia, 1997* (Cat. No. 4221.0). Belconnen, ACT: ABS.

---

**PUBLICLY FUNDED VOCATIONAL EDUCATION AND TRAINING (VET) SECTOR**

---

**Table 17. Publicly funded VET participation rates, by year (%)<sup>(1)</sup>**  
**(courses of any duration, ie. 0+ hours)**

<i>Age (years)</i>	<i>1985</i>	<i>1990</i>	<i>1995</i>	<i>1996</i>	<i>1997</i>
<i>Males</i>					
15	6.4	6.8	6.3	6.8	6.7
16	25.4	18.2	17.8	18.9	18.2
17	27.1	27.0	24.3	24.5	24.0
18	33.2	35.1	33.3	32.9	33.2
19	28.7	31.9	32.1	31.9	31.2
15-19	23.9	24.3	22.8	23.0	22.6
20-24	14.7	15.8	18.0	19.0	18.9
25-29	9.3	9.8	11.4	12.1	12.3
30-64	4.2	4.9	6.5	7.1	7.2
15-64	8.7	9.2	10.8	11.2	11.5
65 and over	0.8	0.6	0.6	0.9	0.8
All ages (5 years old and over)	6.3	6.7	7.9	8.3	8.5
All ages (0+ years)	5.9	6.2	7.3	7.7	7.9
<i>Females</i>					
15	7.7	6.2	5.4	6.0	5.8
16	21.8	13.8	14.9	15.4	14.6
17	17.7	16.5	18.2	18.6	17.9
18	20.4	21.2	25.3	25.1	26.0
19	16.6	17.9	22.6	22.0	22.6
15-19	16.8	15.4	17.3	17.4	17.4
20-24	10.6	11.4	14.1	14.8	14.9
25-29	7.8	8.1	9.7	10.6	10.8
30-64	5.3	5.4	6.7	7.5	7.8
15-64	7.7	7.7	9.7	10.2	10.8
65 and over	0.8	0.5	0.6	0.8	0.7
All ages (5 years old and over)	5.4	5.4	7.0	7.4	7.7
All ages (0+ years)	5.0	5.0	6.5	6.8	7.2
<i>Persons</i>					
15	7.1	6.5	5.8	6.4	6.3
16	23.6	16.1	16.4	17.3	16.5
17	22.5	21.9	21.3	21.7	21.2
18	27.0	28.3	29.4	29.4	29.9
19	22.8	25.0	27.5	27.2	27.1
15-19	20.5	20.0	20.2	20.4	20.1
20-24	12.7	13.7	16.1	16.9	17.0
25-29	8.6	8.9	10.6	11.4	11.6
30-64	4.8	5.1	6.6	7.3	7.5
15-64	8.2	8.5	10.4	10.9	11.5
65 and over	0.8	0.6	0.6	0.8	0.8
All ages (5 years old and over)	5.9	6.1	7.6	8.0	8.4
All ages (0+ years)	5.4	5.7	7.0	7.4	7.8

Note: For detailed footnotes, see publicly funded VET tables on following pages.

(1) Only includes vocational students (Streams 2100-4500; non-recreational).

Source: See above note.

---

**Table 18. Publicly funded VET (TAFE) participation rates - 1985 (%)<sup>(1)</sup>**

<i>Age of persons (years)</i>	<i>NSW</i>	<i>Vic.</i>	<i>Qld</i>	<i>WA</i>	<i>SA</i>	<i>Tas.</i>	<i>NT</i>	<i>ACT</i>	<i>Aust.(2)</i>
15	8.6	4.2	11.2	9.9	16.3	3.2	6.1	9.9	7.1
16	20.1	10.6	14.7	16.7	21.8	19.3	12.1	12.6	23.6
17	23.3	23.1	17.5	21.3	31.3	22.3	23.8	18.0	22.5
18	29.2	28.3	18.7	22.9	35.4	22.6	28.0	29.7	27.0
19	25.9	24.6	15.8	17.8	30.2	18.9	24.1	28.4	22.8
15-19	21.0	17.9	15.5	17.5	26.8	17.0	18.4	19.7	20.5
20-24	15.5	11.8	8.5	10.6	17.0	9.6	10.6	19.3	12.7
25-29	10.1	8.1	6.3	8.6	12.6	6.4	8.1	14.5	8.6
30-64 (3)	5.2	4.5	3.7	6.0	6.9	3.9	6.6	10.4	4.8
15-64 (4)	9.0	7.6	6.2	8.4	11.4	6.7	9.0	13.4	8.2
65 and over (5)	0.6	0.7	0.2	3.1	0.7	1.8	0.8	5.1	0.8
All (5 years & over)(6)	6.5	5.1	4.4	6.2	7.6	4.9	7.4	11.1	5.9
All ages (0+ years)(6)	6.0	4.7	4.1	5.7	7.0	4.5	6.6	10.1	5.4

- (1) Only includes vocational students (Streams 2100-4500; non-recreational). Includes courses of any duration (0 hours and over). The age reference date is 30 June (p.4, CTEC, 1986; p.2, DEET, 1988; DEET, 1994). Data on overseas students are not available, but they are likely to be a very small percentage (less than 1%). Data on RPL are not available. Data on students under 15 years are not available. Students whose ages were not known have been allocated proportionally across all age groups (according to the age distribution of students whose ages were known), but rates in the the 65 and over row include no allocated students. Data are 1986 data, except for the last three rows (65+ years, and all ages), which are 1985 data.
- (2) Participation rates for Australia (column) are 1985 data. The number of students rose from 859,194 to 886,679 between 1985 and 1986 (Table T1. p.12. NCVER. (1993). *Selected TAFE Statistics. 1992.* Leabrook, SA: NCVER).
- (3) All students aged 30 and over as a proportion of the 30-64 year old population, as per earlier publications.
- (4) All students as a proportion of the 15-64 year old population, as per earlier publications.
- (5) Data are not available for 1985 in this age group (except for Aust.). Student numbers from 1986 (age at 31 December, 1986) have been used. instead (p.4. CTEC. (1987). *Selected TAFE Statistics. 1986.* Belconnen, ACT: CTEC).
- (6) Includes those whose ages were not known.

Source: Table T.2. p.15: Table 8. p.50. CTEC. (1986). *Selected TAFE Statistics. 1985.* Belconnen, ACT: CTEC: Table 2.3. p.13. DEET. (1994). *Education participation rates. Australia. 1993.* Canberra: AGPS: Table 1, p.37; Table 2, p.39; Table 3, p.41; Table 4, p.43; Table 5, p.45; Table 6, p.47; Table 7, p.49; Table 8. p.51. DEET. (1988). *Education Participation Rates. Australia. 1987.* Woden, ACT: DEET: Table 7. p.33. CTEC. (1987). *Selected TAFE Statistics. 1986.* Belconnen, ACT: CTEC.

<i>Age (years)</i>											<i>All (5 yrs and over) (6)</i>	<i>All ages (0+ yrs)(6)</i>	
	<i>15</i>	<i>16</i>	<i>17</i>	<i>18</i>	<i>19</i>	<i>15-19</i>	<i>20-24</i>	<i>25-29</i>	<i>30-64 (3)</i>	<i>15-64 (4)</i>			
<i>Aust.</i>													
<i>Males</i>	6.4	25.4	27.1	33.2	28.7	23.9	14.7	9.3	4.2	8.7	0.8	6.3	5.9
<i>Females</i>	7.7	21.8	17.7	20.4	16.6	16.8	10.6	7.8	5.3	7.7	0.8	5.4	5.0

**Table 19. Publicly funded VET (TAFE) participation rates - 1990 (%)<sup>(1)</sup>**

<i>Age (years)</i>	<i>NSW</i>	<i>Vic.</i>	<i>Qld</i>	<i>WA</i>	<i>SA</i>	<i>Tas.</i>	<i>NT</i>	<i>ACT</i>	<i>Aust.</i>
<i>Males</i>									
15	4.9	3.1	15.7	8.4	6.4	1.5	13.9	1.1	6.8
16	19.5	11.9	27.0	20.0	14.3	18.4	14.3	6.6	18.2
17	26.3	25.6	29.7	29.7	28.5	27.8	23.3	13.1	27.0
18	33.5	39.2	32.5	34.2	38.2	33.5	25.7	31.8	35.1
19	31.1	37.1	28.9	27.3	33.8	27.4	22.5	30.0	31.9
15-19	23.5	24.3	27.0	24.3	24.9	22.0	20.1	17.5	24.3
20-24	16.8	17.5	13.2	13.1	17.2	12.1	10.6	14.3	15.8
25-29	9.5	10.3	8.6	9.9	12.1	8.4	6.8	8.9	9.8
30-64 (2)	4.1	5.1	5.1	5.7	6.3	3.9	4.7	4.9	4.9
15-64 (3)	8.4	9.7	9.5	9.6	10.7	7.6	7.3	8.9	9.2
65 and over	0.3	0.9	0.2	2.6	0.4	0.1	0.8	0.7	0.6
All (5 years old & over)(4)	6.1	7.2	6.9	7.1	7.8	5.5	5.7	6.8	6.7
All ages (0+ years)(4)	5.7	6.6	6.4	6.5	7.3	5.0	5.1	6.3	6.2
<i>Females</i>									
15	4.5	2.8	13.8	6.7	8.3	1.4	10.5	1.5	6.2
16	16.4	7.0	21.6	13.3	10.5	11.1	7.3	6.9	13.8
17	15.9	12.1	21.3	20.4	19.9	12.8	15.7	13.4	16.5
18	22.0	20.3	19.6	22.5	23.0	17.8	17.9	24.4	21.2
19	18.4	18.5	15.5	17.9	19.2	14.9	15.0	20.4	17.9
15-19	15.7	12.6	18.4	16.4	16.5	11.8	13.5	14.3	15.4
20-24	12.5	11.4	8.7	11.9	13.7	8.3	10.9	11.6	11.4
25-29	8.3	8.0	6.0	9.5	10.2	5.6	9.2	9.2	8.1
30-64 (2)	5.4	5.2	4.4	7.2	6.5	3.7	6.6	7.0	5.4
15-64 (3)	7.6	7.2	6.9	9.3	9.0	5.4	8.2	9.0	7.7
65 and over	0.4	0.3	0.2	2.3	0.3	0.2	1.3	0.9	0.5
All (5 years old & over)(4)	5.3	5.1	4.9	6.7	6.3	3.8	6.2	6.8	5.4
All ages (0+ years)(4)	5.0	4.8	4.6	6.2	5.9	3.5	5.6	6.3	5.0
<i>Persons (5)</i>									
15	4.7	3.0	14.8	7.6	7.3	1.5	12.3	1.3	6.5
16	18.0	9.5	24.4	16.7	12.5	14.9	11.1	6.8	16.1
17	21.2	19.0	25.6	25.2	24.3	20.2	19.7	13.2	21.9
18	27.9	29.9	26.2	28.4	30.7	25.7	21.9	28.1	28.3
19	24.9	27.9	22.4	22.7	26.7	21.2	18.8	25.2	25.0
15-19	19.7	18.6	22.8	20.4	20.8	17.0	16.9	15.9	20.0
20-24	14.7	14.5	11.0	12.5	15.5	10.2	10.7	13.0	13.7
25-29	8.9	9.2	7.3	9.7	11.2	7.0	8.0	9.0	8.9
30-64 (2)	4.7	5.2	4.7	6.4	6.4	3.8	5.6	6.0	5.1
15-64 (3)	8.1	8.5	8.2	9.4	9.9	6.5	7.7	8.9	8.5
65 and over	0.4	0.6	0.2	2.4	0.3	0.1	1.1	0.8	0.6
All (5 years old & over)(4)	5.9	6.1	5.9	6.9	7.1	4.6	6.0	6.8	6.1
All ages (0+ years)(4)	5.4	5.7	5.5	6.3	6.6	4.3	5.3	6.3	5.7

- (1) Only includes vocational students (Streams 2100-4500; non-recreational). Age is at 30 June. Includes courses of any duration (0+ hours). DEET (1991) does not include information on overseas students, and data are only available on overseas students in VET (whose scope is wider than just TAFE). However, that data indicate that overseas students were considerably less than 1% of the total (Table 27, p.61, AIEF. (1998). *Overseas Student Statistics, 1997*. Canberra: DEETYA). RPL data were not presented in 1990. Unpublished data for students 14 years and under are not available for 1990, and DEET (1991) does not provide data for that age group. Students whose ages were not known have been allocated proportionally across all age groups (according to the age distribution of students whose ages were known), but rates in the the 65 and over rows include no allocated students.
- (2) Includes students aged 65 and over (as a proportion of the 30-64 year old population), as per earlier publications.
- (3) All students as a proportion of the 15-64 year old population. as per earlier *Education Participation Rates* publications.
- (4) Includes those whose ages were not known.
- (5) Includes persons whose sex was unknown.

Source: Table 2.3, p.11; Table 1.2, p.33; Table 2.2, p.35; Table 3.2, p.37; Table 4.2, p.39; Table 5.2, p.41; Table 6.2, p.43; Table 7.2, p.45; Table 8.2, p.47; DEET. (1992). *Education Participation Rates, Australia, 1991*. Canberra: AGPS; Table 4, pp.35-43, DEET. (1991). *Selected TAFE Statistics, 1990*. Leabrook, SA: TAFE National Centre for Research & Development Ltd.

**Table 20. Publicly funded VET participation rates - 1995 (%)<sup>(1)</sup>**

<i>Age (years)</i>	<i>NSW</i>	<i>Vic.</i>	<i>Qld</i>	<i>WA</i>	<i>SA</i>	<i>Tas.</i>	<i>NT</i>	<i>ACT</i>	<i>Aust.</i>
<i>Males</i>									
14 (2)	1.7	0.8	1.7	1.4	1.6	0.3	4.9	0.2	1.4
15	4.9	4.6	13.2	6.0	3.5	0.9	10.0	1.4	6.3
16	19.5	10.8	30.6	16.3	8.2	13.8	12.7	5.8	17.8
17	25.3	18.1	31.4	31.3	19.6	19.0	21.0	11.1	24.3
18	34.5	35.7	29.1	39.8	27.4	28.7	23.2	28.5	33.3
19	33.2	37.1	25.8	34.0	27.3	26.8	22.3	33.3	32.1
15-19	23.5	21.5	26.0	25.6	17.3	17.6	18.0	16.8	22.8
20-24	18.7	21.8	14.3	15.6	17.0	14.1	12.7	17.8	18.0
25-29	11.1	14.2	9.2	9.7	12.5	9.5	9.3	9.7	11.4
30-64	5.7	8.7	5.7	5.1	7.2	4.6	6.3	4.4	6.5
15-64 (3)	10.3	13.2	9.9	9.5	10.2	7.9	9.0	9.4	10.8
65 and over	0.7	0.9	0.3	0.4	0.6	0.1	2.1	0.4	0.6
All (5 years & over)(3)	7.6	9.7	7.3	7.1	7.4	5.6	7.2	7.2	7.9
All ages (0+ years)(3)	7.0	9.0	6.7	6.5	6.9	5.2	6.5	6.7	7.3
<i>Females</i>									
14 (2)	2.0	0.7	1.5	1.7	1.8	0.1	3.8	0.3	1.5
15	4.3	2.6	13.2	4.0	4.5	0.4	4.3	2.5	5.4
16	18.5	5.9	28.2	10.2	7.0	8.2	10.7	4.7	14.9
17	21.6	9.1	26.0	21.2	14.9	11.1	13.7	8.7	18.2
18	28.1	25.1	21.6	29.4	20.8	18.0	17.7	27.3	25.3
19	24.8	24.9	17.0	24.0	20.1	16.9	15.7	24.6	22.6
15-19	19.5	13.7	21.2	17.8	13.6	10.8	12.5	14.3	17.3
20-24	15.6	15.7	10.1	13.4	14.6	10.5	11.6	13.2	14.1
25-29	10.7	10.7	6.9	9.2	10.6	6.6	9.6	7.9	9.7
30-64	7.0	8.1	4.7	6.2	7.0	4.4	7.5	4.7	6.7
15-64 (3)	10.6	10.9	7.8	9.0	9.1	6.2	9.2	8.0	9.7
65 and over	0.6	1.0	0.2	0.4	0.5	0.1	2.1	0.3	0.6
All (5 years & over)(3)	7.5	7.8	5.6	6.5	6.4	4.3	7.2	6.1	7.0
All ages (0+ years)(3)	7.0	7.3	5.2	6.0	6.0	4.0	6.5	5.7	6.5
<i>Persons (4)</i>									
14 (2)	1.9	0.7	1.6	1.5	1.7	0.2	4.4	0.3	1.4
15	4.6	3.6	13.2	5.0	4.0	0.7	7.3	2.0	5.8
16	19.0	8.4	29.5	13.3	7.7	11.1	11.7	5.2	16.4
17	23.5	13.8	28.7	26.5	17.3	15.1	17.5	9.9	21.3
18	31.4	30.6	25.4	34.8	24.2	23.4	20.6	27.9	29.4
19	29.1	31.2	21.5	29.1	23.8	22.1	19.2	29.0	27.5
15-19	21.5	17.7	23.6	21.8	15.5	14.3	15.4	15.5	20.2
20-24	17.2	18.8	12.2	14.5	15.8	12.3	12.2	15.5	16.1
25-29	10.9	12.4	8.1	9.4	11.6	8.0	9.5	8.8	10.6
30-64	6.4	8.4	5.2	5.7	7.1	4.5	6.9	4.5	6.6
15-64 (3)	11.0	12.0	8.8	9.3	9.7	7.0	9.1	8.7	10.4
65 and over	0.6	0.9	0.2	0.4	0.5	0.1	2.1	0.3	0.6
All (5 years & over)(3)	8.0	8.8	6.4	6.8	6.9	4.9	7.2	6.7	7.6
All ages (0+ years)(3)	7.4	8.1	6.0	6.3	6.5	4.6	6.5	6.2	7.0

(1) Only includes vocational students (Streams 2100-4500; non-recreational). Includes courses of any duration (0 hours and over). Includes 9,130 full-fee paying clients from overseas (0.7% of the total) (p.27, NCVER, 1996). The age reference date is 30 June 1995. Includes students with RPL, which were less than 1.5% of the total (Tables 15-16, pp.38-39, NCVER, 1996).

(2) The number of students includes those 13 years and under.

(3) Includes those whose ages were not known.

(4) Includes persons whose sex was unknown.

Source: Table 1, pp.21-23, NCVER. (1996). *Selected Vocational Education and Training Statistics, 1995*.

Leabrook, SA: Australian Committee on Vocational Education and Training Statistics (ACVETS).

**Table 21. Publicly funded VET participation rates - 1996 (%)<sup>(1)</sup>**

<i>Age (years)</i>	<i>NSW</i>	<i>Vic.</i>	<i>Qld</i>	<i>WA</i>	<i>SA</i>	<i>Tas.</i>	<i>NT</i>	<i>ACT</i>	<i>Aust.</i>
<i>Males</i>									
14 (2)	1.7	1.2	1.6	2.2	2.0	0.1	7.0	0.1	1.6
15	6.9	4.9	11.3	6.5	3.7	1.3	12.4	1.1	6.8
16	21.1	13.1	29.2	16.0	9.6	19.0	18.0	4.9	18.9
17	25.0	19.5	31.3	29.6	18.2	26.0	22.3	10.9	24.5
18	34.4	34.9	28.5	37.1	27.9	30.6	28.7	27.2	32.9
19	33.1	37.0	25.9	31.9	26.9	28.6	25.7	32.3	31.9
15-19	24.0	22.0	25.2	24.3	17.3	20.8	21.5	16.2	23.0
20-24	19.4	23.7	14.6	16.5	17.0	16.0	17.5	18.6	19.0
25-29	11.7	15.9	9.0	10.5	12.3	10.4	13.8	9.7	12.1
30-64	6.5	9.8	5.5	5.6	7.2	5.2	9.1	4.6	7.1
15-64 (3)	10.7	14.2	9.5	9.7	10.2	8.9	16.3	9.1	11.2
65 and over	0.9	1.0	0.4	1.8	0.8	0.1	1.3	0.3	0.9
All (5 years & over)(3)	7.9	10.5	7.0	7.3	7.4	6.3	12.9	7.0	8.3
All ages (0+ years)(3)	7.3	9.7	6.5	6.8	6.9	5.9	11.6	6.5	7.7
<i>Females</i>									
14 (2)	2.2	0.9	1.5	1.6	1.6	0.2	5.0	0.2	1.6
15	6.8	3.4	11.3	4.0	3.3	0.6	6.9	2.5	6.0
16	19.7	7.8	25.9	9.7	6.3	11.4	14.8	3.6	15.4
17	21.9	10.1	25.2	21.1	14.5	16.6	20.8	8.2	18.6
18	28.4	24.0	21.3	27.8	21.7	21.1	25.2	24.3	25.1
19	24.7	23.5	16.8	22.3	19.3	16.6	17.7	24.7	22.0
15-19	20.2	13.8	20.0	17.0	13.0	13.0	16.9	13.4	17.4
20-24	16.6	16.2	10.5	13.7	15.2	11.0	14.1	13.2	14.8
25-29	12.1	11.7	7.3	9.4	11.6	7.0	13.1	8.2	10.6
30-64	8.2	8.9	5.0	6.2	8.1	5.0	9.9	4.8	7.5
15-64 (3)	11.4	11.4	7.8	8.7	10.0	6.9	16.7	7.9	10.2
65 and over	0.7	1.2	0.3	1.2	0.8	0.1	1.7	0.3	0.8
All (5 years & over)(3)	8.1	8.2	5.6	6.4	7.0	4.8	13.0	6.0	7.4
All ages (0+ years)(3)	7.5	7.7	5.2	6.0	6.6	4.4	11.6	5.6	6.8
<i>Persons (4)</i>									
14 (2)	1.9	1.1	1.6	1.9	1.8	0.2	6.0	0.2	1.6
15	6.9	4.2	11.3	5.3	3.5	1.0	9.7	1.8	6.4
16	20.7	10.5	27.6	12.9	8.0	15.3	16.4	4.3	17.3
17	23.9	14.9	28.4	25.5	16.4	21.4	21.6	9.6	21.7
18	32.5	29.7	25.0	32.6	24.9	26.0	27.0	25.8	29.4
19	29.6	30.4	21.4	27.3	23.2	22.7	21.9	28.5	27.2
15-19	22.6	18.0	22.7	20.7	15.2	16.9	19.3	14.9	20.4
20-24	18.2	20.0	12.6	15.2	16.1	13.5	15.9	15.9	16.9
25-29	12.0	13.8	8.2	9.9	12.0	8.7	13.4	8.9	11.4
30-64	7.4	9.3	5.2	5.9	7.6	5.1	9.5	4.7	7.3
15-64 (3)	11.7	12.8	8.7	9.2	10.1	7.9	16.5	8.5	10.9
65 and over	0.8	1.1	0.3	1.4	0.8	0.1	1.5	0.3	0.8
All (5 years & over)(3)	8.4	9.3	6.3	6.9	7.2	5.5	12.9	6.5	8.0
All ages (0+ years)(3)	7.8	8.7	5.8	6.4	6.7	5.1	11.7	6.0	7.4

(1) Only includes vocational students (Streams 2100-4500: non-recreational). Includes courses of any duration (0 hours and over). Includes 13,326 full-fee paying clients from overseas (1% of the total) (p.8, NCVET, 1997). The age reference date is 30 June 1996. Includes students with RPL, which were less than 2% of the total (Tables 15-16, pp.32-34, NCVET, 1997).

(2) The number of students includes those 13 years and under.

(3) Includes those whose ages were not known.

(4) Includes persons whose sex was unknown.

Source: Table 1, pp.15-16, NCVET. (1997). *Australian Vocational Education and Training Statistics, 1996: In Detail*. Leabrook, SA: Australian National Training Authority.

**Table 22. Publicly funded VET participation rates - 1997 (%) (1)  
(courses of 200+ hours)**

<i>Age (years)</i>	<i>NSW</i>	<i>Vic.</i>	<i>Qld</i>	<i>WA</i>	<i>SA</i>	<i>Tas.</i>	<i>NT</i>	<i>ACT</i>	<i>Aust.</i>
<i>Males</i>									
14 (2)	0.0	0.0	0.1	0.1	0.0	0.0	0.1	0.0	0.0
15	1.6	1.8	2.8	4.0	1.5	0.5	2.6	0.8	2.1
16	9.5	7.4	9.0	11.9	4.6	16.4	11.2	2.8	8.9
17	14.6	12.7	14.3	20.6	11.0	21.7	14.0	6.2	14.4
18	26.1	27.6	16.5	26.6	18.4	25.8	17.3	21.8	23.9
19	24.6	27.3	13.9	20.2	16.9	21.6	18.2	22.2	22.0
15-19	15.2	15.5	11.2	16.6	10.4	16.9	12.6	11.4	14.2
20-24	11.2	12.6	6.0	7.6	7.2	9.8	8.2	11.4	9.8
25-29	4.6	4.7	2.4	3.4	3.1	3.9	4.9	4.4	4.0
30-64	1.9	2.0	1.1	1.3	1.3	1.3	2.7	1.8	1.7
15-64 (3)	4.6	5.0	3.9	4.0	3.1	4.2	5.0	4.9	4.4
65 and over	0.1	0.1	0.0	0.1	0.1	0.0	0.1	0.2	0.1
All (5 years old & over)(3)	3.4	3.7	2.9	3.0	2.2	3.0	3.9	3.8	3.2
All ages (0+ years)(3)	3.1	3.4	2.7	2.7	2.0	2.8	3.5	3.5	3.0
<i>Females</i>									
	<i>NSW</i>	<i>Vic.</i>	<i>Qld</i>	<i>WA</i>	<i>SA</i>	<i>Tas.</i>	<i>NT</i>	<i>ACT</i>	<i>Aust.</i>
14 (2)	0.0	0.0	0.0	0.0	0.0	0.0	0.0	0.0	0.0
15	1.4	0.7	1.5	2.6	0.9	0.7	1.4	0.8	1.3
16	6.4	3.1	4.9	6.5	2.9	13.0	7.1	2.9	5.2
17	8.2	5.1	9.8	14.4	6.6	14.4	9.4	3.9	8.3
18	19.1	21.4	11.4	19.2	13.7	17.1	13.4	20.1	17.7
19	15.6	19.7	8.4	12.1	10.4	13.1	11.8	18.4	14.5
15-19	10.1	10.0	7.1	10.9	6.8	11.5	8.4	9.8	9.4
20-24	7.6	9.1	4.2	5.7	5.4	6.1	5.9	7.7	6.9
25-29	4.2	4.4	2.5	3.2	2.8	2.7	4.6	4.1	3.7
30-64	2.6	2.4	1.8	1.9	1.5	1.5	3.2	2.2	2.2
15-64 (3)	4.1	4.2	3.5	3.5	2.6	3.1	4.5	4.3	3.8
65 and over	0.1	0.2	0.0	0.1	0.0	0.0	0.2	0.1	0.1
All (5 years old & over)(3)	2.9	3.0	2.5	2.5	1.8	2.2	3.4	3.3	2.7
All ages (0+ years)(3)	2.7	2.8	2.4	2.4	1.7	2.0	3.1	3.0	2.5
<i>Persons (4)</i>									
	<i>NSW</i>	<i>Vic.</i>	<i>Qld</i>	<i>WA</i>	<i>SA</i>	<i>Tas.</i>	<i>NT</i>	<i>ACT</i>	<i>Aust.</i>
14 (2)	0.0	0.0	0.0	0.1	0.0	0.0	0.0	0.0	0.0
15	1.6	1.2	2.1	3.3	1.2	0.6	2.0	0.8	1.7
16	8.2	5.3	7.0	9.3	3.8	14.8	9.3	2.8	7.1
17	11.8	9.0	12.1	17.6	8.9	18.1	11.8	5.1	11.5
18	23.0	24.6	14.0	23.0	16.1	21.6	15.5	21.0	21.0
19	20.4	23.6	11.2	16.3	13.7	17.5	15.2	20.4	18.4
15-19	12.9	12.8	9.2	13.8	8.7	14.3	10.7	10.6	11.9
20-24	9.5	10.9	5.2	6.7	6.3	8.0	7.1	9.6	8.4
25-29	4.4	4.5	2.4	3.3	3.0	3.3	4.8	4.3	3.8
30-64	2.3	2.2	1.4	1.6	1.4	1.4	2.9	2.0	1.9
15-64 (3)	4.4	4.6	3.7	3.7	2.9	3.7	4.7	4.6	4.1
65 and over	0.1	0.1	0.0	0.1	0.0	0.0	0.1	0.1	0.1
All (5 years old & over)(3)	3.2	3.3	2.7	2.7	2.1	2.6	3.7	3.5	3.0
All ages (0+ years)(3)	3.0	3.1	2.5	2.6	1.9	2.4	3.3	3.3	2.8

- (1) Includes courses of 200+ hours only. Only includes vocational students (Streams 2100-4500; non-recreational). Includes overseas full-fee paying clients, which are about one per cent of the total (p.8, NCVET. (1998). *Australian vocational education and training statistics, 1997: In detail.* Leabrook, SA: Australian National Training Authority). Excludes RPLs. The age reference date is 30/6/97.
- (2) The number of students includes those 13 years and under.
- (3) Includes those whose ages were not known.
- (4) Includes persons whose sex was unknown.

Source: NCVET. *Australian vocational education and training statistics, 1997, unpublished data.*

**Table 23. Publicly funded VET participation rates - 1997 (%)<sup>(1)</sup>  
(courses of 50+ hours)**

<i>Age (years)</i>	<i>NSW</i>	<i>Vic.</i>	<i>Qld</i>	<i>WA</i>	<i>SA</i>	<i>Tas.</i>	<i>NT</i>	<i>ACT</i>	<i>Aust.</i>
<i>Males</i>									
14 (2)	1.0	0.7	1.0	1.1	0.6	0.4	3.0	0.1	0.9
15	6.8	3.1	5.4	5.6	3.8	1.3	5.0	1.1	5.0
16	19.6	11.8	15.7	15.2	10.0	19.1	16.9	4.4	15.5
17	24.0	17.7	21.5	26.3	15.2	25.5	19.6	8.4	21.2
18	32.6	33.9	20.7	33.4	23.1	29.4	23.0	26.7	29.7
19	30.5	33.7	18.0	28.2	23.0	26.3	24.5	27.1	27.9
15-19	22.6	20.2	16.1	21.6	14.9	19.9	17.8	14.3	19.8
20-24	16.5	18.8	9.5	12.9	12.6	14.2	12.8	16.0	15.0
25-29	8.5	9.8	5.1	7.5	7.4	7.3	8.8	8.0	7.9
30-64	3.9	5.0	2.7	3.3	3.7	3.5	5.3	3.6	3.9
15-64 (3)	7.9	8.9	6.9	7.0	6.3	6.9	8.5	7.7	7.7
65 and over	0.4	0.4	0.2	0.3	0.2	0.1	0.6	0.3	0.3
All (5 years old & over)(3)	5.8	6.6	5.1	5.2	4.5	4.9	6.7	5.9	5.7
All ages (0+ years)(3)	5.3	6.1	4.7	4.9	4.2	4.6	6.1	5.5	5.3
<i>Females</i>									
14 (2)	0.9	0.5	0.7	1.2	0.5	0.1	1.4	0.1	0.7
15	6.5	1.4	3.7	3.7	3.4	0.9	5.4	1.0	4.0
16	17.9	6.1	10.7	8.9	8.1	14.6	15.3	3.5	11.6
17	19.3	8.8	15.9	18.9	9.9	17.2	14.5	7.3	15.0
18	25.7	25.4	15.0	25.0	18.2	21.2	19.9	23.8	22.7
19	20.9	24.2	12.0	18.1	15.5	17.0	18.6	22.5	19.3
15-19	18.0	13.2	11.4	14.9	10.9	13.9	14.5	12.3	14.5
20-24	12.2	13.5	7.2	10.5	10.5	9.7	11.0	11.8	11.2
25-29	7.8	7.9	4.9	7.0	7.0	5.9	8.9	7.4	7.1
30-64	4.9	5.1	3.6	4.4	4.5	3.8	6.9	4.3	4.6
15-64 (3)	7.5	7.3	6.6	6.7	6.1	5.7	8.8	7.2	7.1
65 and over	0.3	0.5	0.2	0.3	0.3	0.1	0.9	0.2	0.3
All (5 years old & over)(3)	5.3	5.3	4.7	4.8	4.3	4.0	6.8	5.5	5.0
All ages (0+ years)(3)	4.9	4.9	4.4	4.5	4.0	3.7	6.2	5.1	4.7
<i>Persons (4)</i>									
14 (2)	1.0	0.6	0.9	1.1	0.6	0.3	2.2	0.1	0.8
15	6.7	2.3	4.6	4.7	3.6	1.1	5.2	1.0	4.5
16	19.0	9.0	13.2	12.1	9.1	16.9	16.2	3.9	13.7
17	21.9	13.3	18.8	22.7	12.6	21.5	17.2	7.9	18.3
18	29.6	29.8	17.9	29.3	20.7	25.4	21.6	25.3	26.5
19	26.0	29.1	15.1	23.4	19.3	21.8	21.7	24.9	23.8
15-19	20.6	16.8	13.8	18.4	13.0	17.0	16.3	13.4	17.3
20-24	14.5	16.2	8.4	11.7	11.6	12.0	12.0	13.9	13.1
25-29	8.1	8.8	5.0	7.2	7.2	6.6	8.9	7.7	7.5
30-64	4.5	5.0	3.2	3.9	4.1	3.6	6.0	4.0	4.3
15-64 (3)	7.7	8.1	6.8	6.9	7.2	6.3	8.7	7.4	7.5
65 and over	0.3	0.5	0.2	0.3	0.3	0.1	0.7	0.3	0.3
All (5 years old & over)(3)	5.6	5.9	4.9	5.0	5.1	4.4	6.8	5.7	5.4
All ages (0+ years)(3)	5.2	5.5	4.6	4.7	4.8	4.1	6.1	5.3	5.1

- (1) Includes courses of 50+ hours only. Only includes vocational students (Streams 2100-4500; non-recreational). Includes overseas full-fee paying clients, which are about one per cent of the total (p.8, NCVET. (1998). *Australian vocational education and training statistics. 1997: In detail.* Leabrook. SA: Australian National Training Authority). Excludes RPLs. The age reference date is 30/6/97.
- (2) The number of students includes those 13 years and under.
- (3) Includes those whose ages were not known.
- (4) Includes persons whose sex was unknown.

Source: NCVET, Australian vocational education and training statistics, 1997, unpublished data.

**Table 24. Publicly funded VET participation rates - 1997 (%)<sup>(1)</sup>  
(courses of any duration, ie. 0+ hours)**

<i>Age (years)</i>	<i>NSW</i>	<i>Vic.</i>	<i>Qld</i>	<i>WA</i>	<i>SA</i>	<i>Tas.</i>	<i>NT</i>	<i>ACT</i>	<i>TAFE only Aust.</i>	<i>All publicly funded VET Aust.</i>
<i>Males</i>										
14 (2)	2.2	1.5	1.9	1.5	2.2	0.6	5.1	0.1	n.p.	1.8
15	7.8	5.6	7.4	6.3	6.9	2.2	8.7	1.2	n.p.	6.7
16	21.4	14.7	19.3	16.4	17.1	20.3	20.5	4.6	n.p.	18.2
17	26.1	21.0	24.9	28.0	19.8	27.5	22.1	9.1	n.p.	24.0
18	35.6	39.1	23.6	35.7	27.3	31.3	25.9	28.0	n.p.	33.2
19	33.3	38.7	20.4	30.8	27.1	28.7	27.7	28.3	n.p.	31.2
15-19	24.7	24.0	19.0	23.3	19.6	21.6	21.0	15.1	n.p.	22.6
20-24	19.6	25.4	12.4	15.9	17.0	16.9	15.9	17.0	n.p.	18.9
25-29	11.8	16.8	8.3	10.6	12.4	10.6	11.8	8.9	n.p.	12.3
30-64	6.6	10.4	5.1	5.5	8.2	6.0	8.1	4.3	n.p.	7.2
15-64 (3)	10.9	14.9	10.0	9.5	11.0	9.6	11.8	8.7	n.p.	11.5
65 and over	1.0	1.0	0.3	0.5	1.2	0.2	1.1	0.4	n.p.	0.8
All (5 years old & over)(3)	8.1	11.0	7.4	7.1	8.1	6.8	9.3	6.7	n.p.	8.5
All ages (0+ years)(3)	7.5	10.2	6.8	6.6	7.5	6.3	8.4	6.2	n.p.	7.9
<i>Females</i>										
14 (2)	2.3	1.7	1.8	1.4	2.1	0.2	3.1	0.1	n.p.	1.9
15	8.0	3.9	6.0	4.1	7.2	1.1	7.1	1.1	n.p.	5.8
16	20.2	8.3	15.3	9.4	16.6	15.7	17.3	3.5	n.p.	14.6
17	22.2	11.2	20.0	20.0	15.4	18.9	16.5	8.1	n.p.	17.9
18	30.1	28.2	17.7	26.8	22.5	23.6	22.7	24.9	n.p.	26.0
19	25.1	27.5	14.3	20.2	20.6	18.8	22.0	23.3	n.p.	22.6
15-19	21.1	15.9	14.6	16.1	16.4	15.3	16.9	12.9	n.p.	17.4
20-24	16.7	17.4	9.6	12.6	16.8	11.4	14.1	12.7	n.p.	14.9
25-29	12.2	12.2	7.0	8.9	13.7	7.8	11.9	8.1	n.p.	10.8
30-64	8.4	9.0	5.2	6.1	10.6	5.4	9.8	4.8	n.p.	7.8
15-64 (3)	11.7	11.6	8.9	8.5	12.6	7.5	12.5	8.0	n.p.	10.8
65 and over	0.7	1.1	0.2	0.4	1.2	0.2	1.3	0.2	n.p.	0.7
All (5 years old & over)(3)	8.3	8.4	6.4	6.1	9.0	5.2	9.7	6.1	n.p.	7.7
All ages (0+ years)(3)	7.8	7.9	6.0	5.7	8.4	4.8	8.8	5.7	n.p.	7.2
<i>Persons (4)</i>										
14 (2)	2.2	1.6	1.8	1.5	2.1	0.4	4.1	0.1	1.3	1.9
15	8.0	4.7	6.7	5.2	7.1	1.7	7.9	1.1	5.5	6.3
16	21.0	11.6	17.4	13.0	16.9	18.0	19.0	4.1	14.1	16.5
17	24.5	16.2	22.5	24.1	17.7	23.3	19.4	8.6	18.5	21.2
18	33.3	33.8	20.7	31.3	25.0	27.5	24.5	26.5	27.1	29.9
19	29.6	33.3	17.4	25.7	23.9	23.9	25.0	25.8	24.8	27.1
15-19	23.2	20.0	16.9	19.8	18.0	18.5	19.0	14.0	17.9	20.1
20-24	18.3	21.5	11.1	14.3	16.9	14.2	15.0	14.9	14.9	17.0
25-29	12.1	14.5	7.6	9.8	13.1	9.2	11.9	8.5	9.5	11.6
30-64	7.5	9.7	5.2	5.8	9.4	5.7	8.9	4.6	5.7	7.5
15-64 (3)	11.9	13.3	9.5	9.0	14.1	8.5	12.1	8.4	8.4	11.5
65 and over	0.8	1.1	0.3	0.5	1.2	0.2	1.2	0.3	0.3	0.8
All (5 years old & over)(3)	8.6	9.7	6.9	6.6	10.1	6.0	9.5	6.5	6.6	8.4
All ages (0+ years)(3)	8.0	9.0	6.4	6.2	9.4	5.6	8.6	6.0	6.2	7.8

- (1) Includes courses of any duration (0 hours and over). Only includes vocational students (Streams 2100-4500; non-recreational). Includes 15,300 overseas full-fee paying clients, which are 1.0% of the total (p.8, NCVET. (1998). *Australian vocational education and training statistics, 1997: In detail*. Leabrook, SA: Australian National Training Authority). Excludes RPLs. The age reference date is 30/6/97.
- (2) The number of students includes those 13 years and under.
- (3) Includes those whose ages were not known.
- (4) Includes persons whose sex was unknown.

*Source:* NCVET. Australian vocational education and training statistics, 1997. unpublished data

## HIGHER EDUCATION SECTOR

**Table 25. Higher education participation - 1985 (%)<sup>(1)</sup>**

Aust.	Age (years) <sup>(2)</sup>						30-64 (3)	15-64 (4)	65 and over	All ages (0+ yrs) (5)
	17	18	19	15-19	20-24	25-29				
Males	2.8	13.4	14.7	6.0	9.8	4.8	1.7	3.7	n.a.	2.5
Females	3.3	16.1	16.3	6.9	8.3	3.5	1.7	3.4	n.a.	2.2
Persons	3.1	14.7	15.5	6.5	9.1	4.1	1.7	3.5	n.a.	2.3

Note: Between 1985 and 1994, most basic nurse education transferred from hospitals to universities.

This affected the financing and delivery of nurse education, particularly the responsibilities of State and Commonwealth Governments, and health and education budgets. It also contributed to the greater numbers of women than men participating in higher education (see p.90. ABS. (1994). *Australian Social Trends. 1994* (Cat. No. 4102.0). Canberra, ACT: AGPS).

During the 1985 to 1994 transition period, two sets of higher education participation rates were calculated for the then DEET's and DEETYA's (higher) education participation rates publications. One set included basic nurse education students training at universities. The other did not.

The purpose of this was to provide a means of monitoring the effects on higher education of the transfer (p.19, DEET. (1991). *Education Participation Rates. Australia. 1990*. Canberra, ACT: Higher Education Division. DEET).

It is not possible to identify the number of basic nurse education students who were training in hospitals.

In this publication, basic nurse education students attending educational institutions are included.

Basic nurse education students training in hospitals are excluded.

(1) This table includes overseas students. The age reference date is 30 June for 17, 18, 19, 15-19, 20-24, 25-29 and 30-64 year olds. The age reference date is 31 December 1984 for 15-64 year olds, those 65 and over, and all ages.

Data include students doing enabling and non-award courses.

Data by age and State/Territory are not available for universities.

(2) Students aged 16 years and under have not been displayed because there are so few of them.

(3) All students aged 30 years and over (including those who did not state their age) as a proportion of the 30-64 year old population.

(4) All students as a proportion of the 15-64 year old population.

(5) 'All ages' includes entire population (0+ years).

Source: Tables 2.5-2.6, pp.23-26. DEETYA. (1997). *Higher Education*

*Participation Rates. 1975-1995 (Final) & 1996 (Preliminary)*. Canberra, ACT: AGPS:

Table 4, p.15. CTEC. (1985). *Selected University Statistics. 1985*. Belconnen, ACT: CTEC:

Table 4, p.14, CTEC. (1985). *Selected Advanced Education Statistics, 1985*. Belconnen, ACT: CTEC:

Table 3.3, p.14, DEET. (1993). *Education Participation Rates. Australia. 1992*. Canberra, ACT: AGPS.

**Table 26. Higher education participation - 1990 (%)<sup>(1)</sup>**

<i>Age (years)<sup>(2)</sup></i>	<i>NSW</i>	<i>Vic.</i>	<i>Qld</i>	<i>WA</i>	<i>SA</i>	<i>Tas.</i>	<i>NT</i>	<i>ACT</i>	<i>Aust.</i>
<i>Males</i>									
17	0.7	0.7	8.0	7.6	7.8	0.9	2.4	3.6	3.3
18	14.8	18.2	17.4	16.8	16.5	12.2	4.9	36.1	16.7
19	16.4	20.0	17.2	16.9	17.8	15.1	6.1	37.1	17.9
15-19	6.7	8.3	8.8	8.7	8.9	5.8	2.8	16.7	8.0
20-24	10.5	12.0	9.7	9.8	9.8	10.0	2.4	21.9	10.8
25-29	3.7	4.1	4.0	3.9	3.9	3.5	1.6	8.0	3.9
30-64	1.4	1.5	1.5	1.5	1.5	1.3	1.5	2.9	1.5
15-64	3.4	4.0	3.7	3.7	3.7	3.1	1.8	7.9	3.7
65 and over	0.1	0.0	0.0	0.0	0.0	0.3	0.2	0.3	0.1
All ages (3)	2.3	2.7	2.5	2.5	2.5	2.1	1.3	5.6	2.5
<i>Females</i>									
17	1.1	1.1	11.7	10.9	10.9	1.6	2.7	3.1	4.8
18	20.8	26.5	22.4	21.6	21.3	15.7	6.5	38.9	22.8
19	22.7	27.7	20.2	21.8	21.7	18.0	7.4	37.1	23.5
15-19	9.4	11.9	11.3	11.4	11.4	7.4	3.6	17.7	10.8
20-24	11.3	13.6	8.9	10.2	9.8	9.3	4.5	21.1	11.3
25-29	3.4	4.0	3.5	4.2	4.0	2.9	3.1	7.0	3.8
30-64	1.7	2.0	1.6	2.3	2.2	1.6	3.2	3.7	1.9
15-64	4.0	4.9	4.0	4.6	4.4	3.3	3.4	8.3	4.3
65 and over	0.1	0.1	0.0	0.1	0.0	0.5	0.0	0.1	0.1
All ages (3)	2.6	3.2	2.6	3.0	2.9	2.2	2.3	5.8	2.9
<i>Persons</i>									
17	0.9	0.9	9.8	9.2	9.3	1.3	2.5	3.3	4.0
18	17.8	22.3	19.8	19.2	18.8	14.0	5.7	37.5	19.7
19	19.5	23.8	18.7	19.3	19.7	16.5	6.8	37.1	20.6
15-19	8.0	10.1	10.0	10.0	10.1	6.6	3.2	17.2	9.4
20-24	10.9	12.8	9.3	10.0	9.8	9.7	3.4	21.5	11.0
25-29	3.6	4.0	3.7	4.0	3.9	3.2	2.3	7.5	3.8
30-64	1.6	1.8	1.5	1.9	1.9	1.4	2.3	3.3	1.7
15-64	3.7	4.4	3.8	4.1	4.0	3.2	2.6	8.1	4.0
65 and over	0.1	0.0	0.0	0.0	0.0	0.4	0.1	0.2	0.1
All ages (3)	2.5	3.0	2.6	2.8	2.7	2.1	1.8	5.7	2.7

Note: Between 1985 and 1994, most basic nurse education transferred from hospitals to universities.

This affected the financing and delivery of nurse education, particularly the responsibilities of State and Commonwealth Governments, and health and education budgets. It also contributed to the greater numbers of women than men participating in higher education (see p.90. ABS. (1994). *Australian Social Trends. 1994* (Cat. No. 4102.0).

Canberra, ACT: AGPS). During the 1985 to 1994 transition period, two sets of higher education participation rates were calculated for the then DEET's and DEETYA's (higher) education participation rates publications. One set included basic nurse education students training at universities. The other did not.

The purpose of this was to provide a means of monitoring the effects on higher education of the transfer (p.19, DEET. (1991). *Education Participation Rates. Australia. 1990*. Canberra, ACT: Higher Education Division, DEET).

It is not possible to identify the number of basic nurse education students who were training in hospitals.

In this publication, basic nurse education students attending educational institutions are included.

Basic nurse education students training in hospitals are excluded.

(1) This table excludes overseas students. The age reference date is 30 June. Data include students doing enabling and non-award courses. Data are State/Territory of participation (ie. institution), not State/Territory of origin.

(2) Students aged 16 years and under have not been displayed because there are so few of them.

(3) 'All ages' includes entire population (0+ years).

Source: DEETYA Higher Education Student Statistics collection, unpublished data.

**Table 27. Higher education participation - 1995 (%)<sup>(1)</sup>**

<i>Age (years)<sup>(2)</sup></i>	<i>NSW</i>	<i>Vic.</i>	<i>Qld</i>	<i>WA</i>	<i>SA</i>	<i>Tas.</i>	<i>NT</i>	<i>ACT</i>	<i>Aust.</i>
<i>Males</i>									
17	0.7	0.7	7.5	7.9	8.2	0.7	2.8	2.6	3.3
18	15.2	21.3	17.1	17.7	18.8	16.1	7.2	33.3	18.1
19	18.0	24.3	17.5	17.2	21.1	18.0	9.3	38.3	20.1
15-19	6.9	9.4	8.7	8.6	9.7	6.9	3.6	15.5	8.4
20-24	12.1	14.4	10.3	11.2	12.0	12.6	5.9	24.1	12.6
25-29	4.9	5.1	4.8	4.6	4.3	3.7	3.1	9.7	4.9
30-64	1.8	1.8	1.7	1.6	1.6	1.4	1.8	3.1	1.8
15-64	3.9	4.5	3.9	3.9	4.0	3.5	2.6	8.3	4.2
65 and over	0.1	0.0	0.0	0.0	0.0	0.0	0.1	0.2	0.0
All ages (3)	2.7	3.1	2.6	2.6	2.7	2.3	1.8	5.9	2.8
<i>Females</i>									
17	1.0	1.0	11.3	10.4	11.4	1.2	4.6	2.4	4.8
18	23.1	32.6	24.2	22.2	26.8	20.6	13.8	38.8	26.6
19	25.5	32.8	23.9	22.3	26.9	23.7	16.5	39.5	27.6
15-19	10.0	13.5	12.2	11.1	13.2	8.8	6.5	17.9	12.0
20-24	13.7	17.1	12.0	13.1	13.9	13.1	9.3	23.1	14.7
25-29	4.7	5.6	4.8	5.5	4.9	3.6	5.3	7.6	5.2
30-64	2.1	2.3	1.9	2.6	2.4	1.6	3.9	3.5	2.3
15-64	4.6	5.6	4.6	5.1	5.0	3.9	5.2	8.7	5.1
65 and over	0.0	0.0	0.0	0.0	0.0	0.0	0.2	0.1	0.0
All ages (3)	3.0	3.7	3.1	3.4	3.3	2.5	3.6	6.1	3.4
<i>Persons</i>									
17	0.8	0.8	9.4	9.1	9.8	1.0	3.6	2.5	4.1
18	19.0	26.8	20.6	19.9	22.7	18.3	10.3	36.1	22.2
19	21.7	28.4	20.6	19.7	23.9	20.7	12.8	39.0	23.8
15-19	8.4	11.4	10.5	9.8	11.4	7.8	5.0	16.7	10.2
20-24	12.9	15.7	11.2	12.1	12.9	12.8	7.6	23.6	13.6
25-29	4.8	5.3	4.8	5.1	4.6	3.7	4.3	8.6	5.1
30-64	2.0	2.1	1.8	2.1	2.0	1.5	2.8	3.3	2.0
15-64	4.3	5.0	4.3	4.5	4.5	3.7	3.8	8.5	4.6
65 and over	0.1	0.0	0.0	0.0	0.0	0.0	0.1	0.2	0.0
All ages (3)	2.8	3.4	2.9	3.0	3.0	2.4	2.7	6.0	3.1

(1) This table excludes overseas students. The age reference date is 30 June. Data include students doing enabling and non-award courses. Data are State/Territory of participation (ie. institution), not State/Territory of origin.

(2) Students aged 16 years and under have not been displayed because there are so few of them.

(3) 'All ages' includes entire population (0+ years).

Source: Tables 2.5-2.6. pp.23-26; Tables 8.1-8.16. pp.49-64; & Tables 11.1-11.2. p.83-84. DEETYA. (1997).

*Higher Education Participation Rates. 1975-1995 (Final) & 1996 (Preliminary)*. Canberra. ACT: AGPS:

DEETYA. Higher Education Student Statistics collection. unpublished data.

**Table 28. Higher education participation - 1996 (%)<sup>(1)</sup>**

<i>Age (years)<sup>(2)</sup></i>	<i>NSW</i>	<i>Vic.</i>	<i>Qld</i>	<i>WA</i>	<i>SA</i>	<i>Tas.</i>	<i>NT</i>	<i>ACT</i>	<i>Aust.</i>
<i>Males</i>									
17	0.7	0.7	7.9	8.2	6.5	0.8	2.1	2.5	3.3
18	15.8	22.3	19.2	17.8	20.6	17.9	7.0	29.1	19.0
19	18.7	24.5	18.8	17.9	21.5	20.6	8.1	37.5	20.8
15-19	7.0	9.6	9.2	8.8	9.8	7.5	3.6	15.1	8.7
20-24	12.5	15.2	11.1	11.2	12.9	13.1	4.8	25.3	13.1
25-29	5.2	5.2	5.0	4.6	4.7	4.4	3.0	10.0	5.1
30-64	1.9	1.9	1.7	1.6	1.6	1.4	2.0	3.0	1.8
15-64	4.0	4.6	4.0	3.9	4.1	3.6	2.7	8.2	4.2
65 and over	0.1	0.0	0.0	0.0	0.0	0.0	0.2	0.2	0.0
All ages <sup>(3)</sup>	2.7	3.1	2.7	2.6	2.7	2.4	1.9	5.9	2.9
<i>Females</i>									
17	1.1	1.1	12.9	10.6	9.8	0.9	3.9	2.3	5.0
18	23.8	33.4	27.2	23.2	28.4	22.5	11.8	36.0	27.7
19	26.8	34.6	25.5	23.0	29.0	24.4	12.9	43.2	29.0
15-19	10.3	14.0	13.2	11.4	13.5	9.1	5.8	17.9	14.0
20-24	14.4	18.1	13.0	13.7	15.0	13.3	8.6	26.0	15.5
25-29	5.2	5.8	5.2	5.8	5.4	3.7	5.5	8.4	5.6
30-64	2.3	2.4	2.1	2.6	2.5	1.7	4.1	3.5	2.4
15-64	4.8	5.7	4.9	5.2	5.2	3.9	5.1	8.6	5.3
65 and over	0.0	0.0	0.0	0.0	0.0	0.0	0.6	0.1	0.0
All ages <sup>(3)</sup>	3.1	3.8	3.3	3.4	3.4	2.5	3.6	6.1	3.5
<i>Persons</i>									
17	0.9	0.9	10.3	9.7	8.1	0.8	3.0	2.4	4.2
18	19.7	27.4	23.1	20.7	24.4	20.1	9.2	32.4	23.3
19	22.6	28.9	22.1	20.4	25.1	22.4	10.4	40.3	24.8
15-19	8.6	11.7	11.1	10.1	11.6	8.3	4.6	16.4	11.3
20-24	13.1	16.6	12.0	12.4	13.9	13.2	6.6	25.6	14.3
25-29	4.6	5.5	5.1	5.2	5.0	4.0	4.2	9.2	5.4
30-64	2.1	2.1	1.9	2.1	2.0	1.5	3.0	3.3	2.1
15-64	4.4	5.2	4.5	4.5	4.6	3.8	3.8	8.4	4.8
65 and over	0.1	0.0	0.0	0.0	0.0	0.0	0.4	0.1	0.0
All ages <sup>(3)</sup>	2.9	3.5	3.0	3.0	3.1	2.5	2.7	6.0	3.2

Note: The 15-19 year old estimate for Australia (persons) differs slightly from that in Table 7 for methodological reasons. These potentially include rounding errors; treatment of attenders aged less than 17 years; and treatment of multi-State institutions (ie. ACU).

- (1) This table excludes overseas students. The age reference date is 30 June. Data include students doing enabling and non-award courses. Data are State/Territory of participation (ie. institution), not State/Territory of origin.  
 (2) Students aged 16 years and under have not been displayed because there are so few of them.  
 (3) 'All ages' includes entire population (0+ years).

*Source:* DEETYA, Higher Education Student Statistics collection, unpublished data.

**Table 29. Higher education participation - 1997 (%)<sup>(1)</sup>**

<i>Age (years)<sup>(2)</sup></i>	<i>NSW</i>	<i>Vic.</i>	<i>Qld</i>	<i>WA</i>	<i>SA</i>	<i>Tas.</i>	<i>NT</i>	<i>ACT</i>	<i>Aust.</i>
<i>Males</i>									
17	0.7	0.7	7.8	8.6	4.9	0.5	1.9	2.8	3.2
18	16.1	22.4	19.7	18.7	20.1	15.2	8.0	31.3	19.3
19	19.5	25.2	20.0	18.5	22.6	21.2	6.6	35.8	21.6
15-19	7.1	9.8	9.3	9.1	9.5	7.0	3.3	15.1	8.8
20-24	13.0	15.7	11.6	11.6	13.6	13.7	4.6	25.4	13.6
25-29	5.3	5.2	5.1	4.6	4.9	4.4	2.8	9.4	5.2
30-64	1.9	1.8	1.7	1.6	1.6	1.4	1.7	2.9	1.8
15-64	4.1	4.6	4.1	3.9	4.0	3.6	2.4	8.1	4.3
65 and over	0.1	0.0	0.0	0.0	0.1	0.1	0.1	0.1	0.0
All ages (3)	2.7	3.1	2.8	2.7	2.7	2.4	1.7	5.8	2.9
<i>Females</i>									
17	1.1	0.9	12.5	11.7	7.2	0.8	3.0	2.1	4.9
18	24.1	32.3	29.2	24.8	29.1	19.6	11.4	36.9	28.2
19	27.9	35.2	27.8	24.9	30.2	26.0	13.0	44.6	30.3
15-19	10.5	13.8	13.8	12.3	13.2	8.8	5.4	18.2	12.6
20-24	15.7	19.0	13.7	14.4	15.8	14.1	7.7	26.5	16.4
25-29	5.5	5.8	5.4	5.9	5.5	3.8	4.8	8.8	5.7
30-64	2.3	2.2	2.1	2.6	2.4	1.7	3.8	3.4	2.3
15-64	4.9	5.7	5.1	5.3	5.2	4.0	4.7	8.7	5.3
65 and over	0.0	0.0	0.0	0.0	0.0	0.0	0.2	0.1	0.0
All ages (3)	3.2	3.7	3.4	3.6	3.4	2.5	3.3	6.1	3.5
<i>Persons</i>									
17	0.9	0.8	10.1	10.1	6.0	0.7	2.4	2.4	4.0
18	20.0	27.2	24.3	21.7	24.5	17.4	9.6	34.1	23.6
19	23.6	30.1	23.8	21.6	26.3	23.5	9.6	40.1	25.8
15-19	8.8	11.8	11.5	10.7	11.3	7.9	4.3	16.6	10.7
20-24	14.3	17.4	12.6	13.0	14.6	13.9	6.1	26.0	15.0
25-29	5.4	5.5	5.3	5.2	5.2	4.1	3.7	9.1	5.4
30-64	2.1	2.0	1.9	2.1	2.0	1.6	2.7	3.2	2.1
15-64	4.5	5.2	4.6	4.6	4.6	3.8	3.5	8.4	4.8
65 and over	0.0	0.0	0.0	0.0	0.0	0.0	0.1	0.1	0.0
All ages (3)	3.0	3.5	3.1	3.1	3.0	2.5	2.4	6.0	3.2

(1) This table excludes overseas students. The age reference date is 30 June. Data include students doing enabling and non-award courses. Data are State/Territory of participation (ie. institution), not State/Territory of origin.

(2) Students aged 16 years and under have not been displayed because there are so few of them.

(3) 'All ages' includes entire population (0+ years).

Source: DEETYA, Higher Education Student Statistics collection, unpublished data.

**Table 30. Higher education participation rates, by year (%)**

<i>Age (years)</i>	<i>1985</i>	<i>1990</i>	<i>1995</i>	<i>1996</i>	<i>1997</i>
<i>Males</i>					
17	2.8	3.3	3.3	3.3	3.2
18	13.4	16.7	18.1	19.0	19.3
19	14.7	17.9	20.1	20.8	21.6
15-19	6.0	8.0	8.4	8.7	8.8
20-24	9.8	10.8	12.6	13.1	13.6
25-29	4.8	3.9	4.9	5.1	5.2
30-64	1.7	1.5	1.8	1.8	1.8
15-64	3.7	3.7	4.2	4.2	4.3
65 and over	n.a.	0.1	0.0	0.0	0.0
All ages (0+ years)	2.5	2.5	2.8	2.9	2.9
<i>Females</i>					
17	3.3	4.8	4.8	5.0	4.9
18	16.1	22.8	26.6	27.7	28.2
19	16.3	23.5	27.6	29.0	30.3
15-19	6.9	10.8	12.0	14.0	12.6
20-24	8.3	11.3	14.7	15.5	16.4
25-29	3.5	3.8	5.2	5.6	5.7
30-64	1.7	1.9	2.3	2.4	2.3
15-64	3.4	4.3	5.1	5.3	5.3
65 and over	n.a.	0.1	0.0	0.0	0.0
All ages (0+ years)	2.2	2.9	3.4	3.5	3.5
<i>Persons</i>					
17	3.1	4.0	4.1	4.2	4.0
18	14.7	19.7	22.2	23.3	23.6
19	15.5	20.6	23.8	24.8	25.8
15-19	6.5	9.4	10.2	11.3	10.7
20-24	9.1	11.0	13.6	14.3	15.0
25-29	4.1	3.8	5.1	5.4	5.4
30-64	1.7	1.7	2.0	2.1	2.1
15-64	3.5	4.0	4.6	4.8	4.8
65 and over	n.a.	0.1	0.0	0.0	0.0
All ages (0+ years)	2.3	2.7	3.1	3.2	3.2

Note: For detailed footnotes, see higher education participation tables on the preceding tables.

- (1) Students aged 16 years and under have not been displayed because there are so few of them.  
Data include students doing enabling and non-award courses.

*Source:* See above note.

**Table 31. Full-time higher education participation - 1997 (%)<sup>(1)</sup>**

<i>Age (years)<sup>(2)</sup></i>	<i>NSW</i>	<i>Vic.</i>	<i>Qld</i>	<i>WA</i>	<i>SA</i>	<i>Tas.</i>	<i>NT</i>	<i>ACT</i>	<i>Aust.</i>
<i>Males</i>									
17	0.7	0.6	7.4	8.4	4.8	0.5	1.7	2.6	3.1
18	15.2	21.8	18.2	17.9	19.1	15.0	7.1	30.4	18.4
19	17.8	23.7	17.7	16.9	20.5	20.4	5.5	33.9	19.8
15-19	6.6	9.4	8.5	8.6	8.8	6.8	2.9	14.5	8.2
20-24	9.3	11.9	8.0	8.6	10.2	11.1	3.1	20.1	10.0
25-29	1.9	2.1	2.0	2.2	2.5	2.6	1.3	4.9	2.1
30-64	0.4	0.4	0.4	0.5	0.5	0.6	0.6	1.0	0.4
15-64	2.2	2.8	2.4	2.5	2.6	2.6	1.3	5.5	2.5
65 and over	0.0	0.0	0.0	0.0	0.0	0.0	0.0	0.0	0.0
All ages (3)	1.5	1.9	1.6	1.7	1.7	1.7	0.9	4.0	1.7
<i>Females</i>									
17	1.0	0.8	11.9	11.5	7.0	0.8	2.6	2.0	4.7
18	23.0	31.1	27.5	23.7	27.7	19.3	10.1	35.7	27.0
19	26.2	32.6	25.2	22.9	27.2	24.5	10.2	41.7	28.0
15-19	10.0	13.0	12.8	11.6	12.2	8.4	4.5	17.3	11.9
20-24	11.5	14.3	9.5	10.4	11.5	11.8	4.4	20.6	12.1
25-29	1.8	2.0	1.9	2.4	2.2	2.2	2.0	3.8	2.0
30-64	0.5	0.4	0.5	0.7	0.6	0.6	1.1	1.1	0.5
15-64	2.8	3.4	3.0	3.1	3.1	2.7	2.0	5.7	3.1
65 and over	0.0	0.0	0.0	0.0	0.0	0.0	0.0	0.0	0.0
All ages (3)	1.8	2.2	2.0	2.1	2.0	1.8	1.4	4.0	2.1
<i>Persons</i>									
17	0.8	0.7	9.6	9.9	5.9	0.6	2.1	2.3	3.9
18	19.0	26.3	22.7	20.7	23.2	17.1	8.5	33.0	22.6
19	21.9	28.0	21.4	19.8	23.8	22.4	7.7	37.7	23.8
15-19	8.3	11.2	10.6	10.0	10.5	7.6	3.6	15.9	10.0
20-24	10.4	13.1	8.7	9.5	10.9	11.4	3.7	20.4	11.0
25-29	1.9	2.0	1.9	2.3	2.4	2.4	1.7	4.3	2.1
30-64	0.4	0.4	0.5	0.6	0.5	0.6	0.8	1.0	0.5
15-64	2.5	3.1	2.7	2.8	2.8	2.7	1.6	5.6	2.8
65 and over	0.0	0.0	0.0	0.0	0.0	0.0	0.0	0.0	0.0
All ages (3)	1.6	2.1	1.8	1.9	1.9	1.7	1.1	4.0	1.9

- (1) This table excludes overseas students. The age reference date is 30 June. Data include students doing enabling and non-award courses. Data are State/Territory of participation (ie. institution), not State/Territory of origin.  
(2) Students aged 16 years and under have not been displayed because there are so few of them.  
(3) 'All ages' includes entire population (0+ years).

Source: DEETYA Higher Education Student Statistics collection, unpublished data.

**Table 32. Part-time higher education participation - 1997 (%)<sup>(1)</sup>**

<i>Age (years)<sup>(2)</sup></i>	<i>NSW</i>	<i>Vic.</i>	<i>Qld</i>	<i>WA</i>	<i>SA</i>	<i>Tas.</i>	<i>NT</i>	<i>ACT</i>	<i>Aust.</i>
<i>Males</i>									
17	0.0	0.0	0.2	0.2	0.1	0.0	0.1	0.2	0.1
18	0.8	0.6	1.0	0.8	1.0	0.2	0.8	0.9	0.8
19	1.6	1.4	1.6	1.5	2.0	0.8	1.1	1.9	1.6
15-19	0.5	0.4	0.6	0.5	0.6	0.2	0.4	0.7	0.5
20-24	3.1	3.4	2.5	2.6	3.1	2.3	1.5	5.3	3.0
25-29	2.1	2.4	1.8	1.8	1.9	1.4	1.3	4.5	2.1
30-64	0.8	1.0	0.6	0.8	0.8	0.6	0.9	1.9	0.8
15-64	1.1	1.4	1.0	1.1	1.2	0.8	1.0	2.5	1.2
65 and over	0.0	0.0	0.0	0.0	0.0	0.0	0.1	0.1	0.0
All ages (3)	0.8	0.9	0.7	0.7	0.8	0.6	0.7	1.8	0.8
<i>Females</i>									
17	0.1	0.0	0.4	0.2	0.2	0.1	0.4	0.0	0.2
18	1.0	1.1	1.3	1.1	1.4	0.3	1.3	1.2	1.1
19	1.5	2.5	1.8	1.8	2.7	1.5	2.8	2.8	2.0
15-19	0.5	0.7	0.7	0.6	0.8	0.3	0.9	0.9	0.7
20-24	3.1	4.1	2.8	3.2	3.5	2.1	3.0	5.9	3.4
25-29	2.1	2.8	1.9	2.3	2.3	1.4	2.1	5.0	2.4
30-64	0.9	1.3	0.8	1.2	1.1	1.0	2.0	2.4	1.1
15-64	1.3	1.7	1.2	1.5	1.5	1.1	2.1	3.0	1.5
65 and over	0.0	0.0	0.0	0.0	0.0	0.0	0.2	0.1	0.0
All ages (3)	0.8	1.1	0.8	1.0	1.0	0.7	1.4	2.1	1.0
<i>Persons</i>									
17	0.1	0.0	0.3	0.2	0.2	0.0	0.3	0.1	0.1
18	0.9	0.8	1.1	0.9	1.2	0.2	1.1	1.0	0.9
19	1.5	1.9	1.7	1.7	2.4	1.1	1.9	2.4	1.8
15-19	0.5	0.6	0.6	0.6	0.7	0.3	0.7	0.8	0.6
20-24	3.1	3.7	2.7	2.9	3.3	2.2	2.2	5.6	3.2
25-29	2.1	2.6	1.8	2.0	2.1	1.4	1.7	4.7	2.2
30-64	0.8	1.1	0.7	1.0	1.0	0.8	1.4	2.1	1.0
15-64	1.2	1.5	1.1	1.3	1.3	0.9	1.5	2.8	1.3
65 and over	0.0	0.0	0.0	0.0	0.0	0.0	0.1	0.1	0.0
All ages (3)	0.8	1.0	0.7	0.9	0.9	0.6	1.0	2.0	0.9

(1) This table excludes overseas students. The age reference date is 30 June. Data include students doing enabling and non-award courses. Data are State/Territory of participation (ie. institution), not State/Territory of origin.

(2) Students aged 16 years and under have not been displayed because there are so few of them.

(3) 'All ages' includes entire population (0+ years).

Source: DEETYA Higher Education Student Statistics collection, unpublished data.

**Table 33. External higher education participation - 1997 (%)<sup>(1)</sup>**

<i>Age (years)<sup>(2)</sup></i>	<i>NSW</i>	<i>Vic.</i>	<i>Qld</i>	<i>WA</i>	<i>SA</i>	<i>Tas.</i>	<i>NT</i>	<i>ACT</i>	<i>Aust.</i>
<i>Males</i>									
17	0.0	0.0	0.2	0.0	0.0	0.0	0.0	0.0	0.0
18	0.0	0.0	0.5	0.0	0.0	0.0	0.0	0.0	0.1
19	0.1	0.1	0.6	0.1	0.1	0.0	0.0	0.0	0.2
15-19	0.0	0.0	0.2	0.0	0.0	0.0	0.0	0.0	0.1
20-24	0.6	0.4	1.0	0.4	0.3	0.3	0.0	0.0	0.6
25-29	1.3	0.8	1.4	0.6	0.5	0.3	0.1	0.0	1.0
30-64	0.8	0.5	0.7	0.3	0.3	0.3	0.2	0.0	0.6
15-64	0.7	0.5	0.7	0.3	0.3	0.2	0.1	0.0	0.6
65 and over	0.0	0.0	0.0	0.0	0.0	0.0	0.0	0.0	0.0
All ages (3)	0.5	0.3	0.5	0.2	0.2	0.2	0.1	0.0	0.4
<i>Females</i>									
17	0.0	0.0	0.1	0.0	0.0	0.0	0.0	0.0	0.0
18	0.1	0.1	0.5	0.0	0.1	0.0	0.0	0.0	0.2
19	0.2	0.1	0.8	0.2	0.2	0.1	0.0	0.0	0.3
15-19	0.1	0.0	0.3	0.1	0.1	0.0	0.0	0.0	0.1
20-24	1.1	0.7	1.5	0.8	0.8	0.2	0.3	0.0	1.0
25-29	1.5	1.0	1.7	1.2	1.0	0.2	0.6	0.0	1.3
30-64	0.9	0.5	0.8	0.7	0.7	0.2	0.7	0.0	0.7
15-64	0.9	0.6	0.9	0.7	0.7	0.2	0.6	0.0	0.7
65 and over	0.0	0.0	0.0	0.0	0.0	0.0	0.0	0.0	0.0
All ages (3)	0.6	0.4	0.6	0.5	0.4	0.1	0.4	0.0	0.5
<i>Persons</i>									
17	0.0	0.0	0.1	0.0	0.0	0.0	0.0	0.0	0.0
18	0.1	0.0	0.5	0.0	0.0	0.0	0.0	0.0	0.1
19	0.2	0.1	0.7	0.1	0.1	0.0	0.0	0.0	0.2
15-19	0.0	0.0	0.3	0.0	0.0	0.0	0.0	0.0	0.1
20-24	0.9	0.6	1.2	0.6	0.5	0.3	0.2	0.0	0.8
25-29	1.4	0.9	1.5	0.9	0.8	0.3	0.3	0.0	1.1
30-64	0.8	0.5	0.7	0.5	0.5	0.2	0.4	0.0	0.6
15-64	0.8	0.5	0.8	0.5	0.5	0.2	0.3	0.0	0.7
65 and over	0.0	0.0	0.0	0.0	0.0	0.0	0.0	0.0	0.0
All ages (3)	0.5	0.3	0.6	0.3	0.3	0.1	0.2	0.0	0.4

(1) This table excludes overseas students. The age reference date is 30 June. Data include students doing enabling and non-award courses. Data are State/Territory of participation (ie. institution), not State/Territory of origin.

(2) Students aged 16 years and under have not been displayed because there are so few of them.

(3) 'All ages' includes entire population (0+ years).

*Source:* DEETYA, Higher Education Student Statistics collection, unpublished data.

## TRAINING

**Table 34. Participation in education and training by 15-64 year olds (survey data) - 1997 (%)<sup>(1)</sup>**

	Age group (years)									
	15	16	17	18	19	15-19	20-24	25-29	30-64	15-64
<i>Secondary school</i>	96.0	82.4	57.3	9.9	*1.0	53	*0.1	0.0	0.0	6.2
TAFE only	0.0	*0.5	*0.8	*2.1	*2.8	1.1	2.1	0.9	0.6	0.9
TAFE and training courses	0.0	0.0	0.0	*0.7	*0.9	*0.3	0.8	*0.5	0.3	0.4
TAFE and on-the-job training	0.0	*0.8	4.5	5.9	10.1	3.9	6.2	1.8	0.6	1.8
TAFE, training courses and OJT	0.0	0.0	*0.9	*1.3	4.3	1.2	4.5	2.3	1.4	1.9
<i>Total TAFE</i>	0.0	*1.3	6.2	10.0	18.1	6.6	13.5	5.6	2.9	5.0
Males	0.0	*1.9	8.1	12.7	21.7	8.1	16.6	5.9	2.8	5.4
Females	0.0	*0.7	*3.6	7.3	14.9	4.9	10.3	5.2	3.0	4.4
<i>Total TAFE</i>	0.0	*1.3	6.2	10.0	18.1	6.6	13.5	5.6	2.9	5.0
Other institution or organisation only	0.0	0.0	*0.2	*1.0	*0.1	*0.3	*0.3	*0.4	0.2	0.3
Other institution & training courses	0.0	0.0	0.0	0.0	0.0	0.0	*0.1	*0.3	*0.1	0.1
Other institution or org'n & OJT	0.0	*0.3	*0.7	*1.1	*3.0	0.9	1.3	0.8	0.3	0.6
Other inst'n, training courses & OJT	0.0	*0.1	*0.8	*0.7	*1.8	*0.6	1.7	1.1	0.8	1.0
<i>Total other institution or organisation</i>	0.0	*0.4	*1.7	*2.7	4.9	1.8	3.4	2.6	1.5	1.9
Males	0.0	*0.8	*1.4	*1.8	*2.4	*1.2	3.3	2.2	1.3	1.6
Females	0.0	0.0	*2.1	*3.7	7.2	2.4	3.4	3.1	1.8	2.2
<i>Total other institution or organisation</i>	0.0	*0.4	*1.7	*2.7	4.9	1.8	3.4	2.6	1.5	1.9
Higher education (uni) only	0.0	0.0	0.0	5.7	6.2	2.1	4.6	1.1	0.6	1.3
Higher education and training courses	0.0	0.0	0.0	*0.6	*2.2	*0.5	0.7	*0.4	0.1	0.3
Higher ed'n and on-the-job training	0.0	0.0	*0.5	4.6	11.3	2.9	7.0	1.7	0.8	1.9
Higher ed'n, training courses & OJT	0.0	0.0	*0.3	*2.5	6.7	1.7	6.3	4.4	2.3	3.0
<i>Total higher education (uni)</i>	0.0	0.0	*0.8	13.3	26.4	7.3	18.7	7.5	3.8	6.5
Males	0.0	0.0	*0.9	12.2	22.9	6.2	16.6	6.9	3.0	5.5
Females	0.0	0.0	*0.7	14.5	29.7	8.4	20.8	8.2	4.7	7.7
<i>Total higher education (uni)</i>	0.0	0.0	*0.8	13.3	26.4	7.3	18.7	7.5	3.8	6.5
Training (in-house/ext'l) courses only	0.0	*0.9	*0.8	*1.3	*1.4	0.9	4.0	5.2	7.3	5.9
Training courses & on-the-job training	*0.6	*2.5	6.8	12.7	15.1	7.1	20.5	28.6	29.1	25.4
<i>Total training courses (in-house/ext'l)</i>	*0.6	3.4	7.6	14.1	16.6	7.9	24.5	33.8	36.4	31.2
Males	*0.8	*3.5	7.1	10.4	14.6	6.8	21.9	33.6	37.5	31.7
Females	*0.5	*3.4	8.5	17.9	18.3	9.2	27.2	34.0	35.0	30.7
<i>Total training courses (in-house/ext'l)</i>	*0.6	3.4	7.6	14.1	16.6	7.9	24.5	33.8	36.4	31.2
Males	*1.9	9.0	13.8	31.8	21.5	14.8	27.3	31.8	27.0	26.3
Females	*0.9	*5.1	13.4	23.5	15.2	11.0	24.5	26.0	23.1	22.1
<i>On-the-job training only</i>	*1.4	7.0	13.6	27.8	18.2	13.0	25.9	29.0	25.2	24.3
<i>Total (2)</i>										
Males	98.2	96.2	96.4	93.3	89.2	95.0	88.4	82.3	72.4	78.1
Females	99.5	97.1	97.2	90.9	94.2	95.9	89.6	78.6	69.4	76.5
Persons	98.8	96.6	96.8	92.2	91.8	95.4	89.0	80.6	71.0	77.3

Note: 'OJT' is on-the-job training. Rates marked '\*' are subject to sampling variability too high for most practical uses.

- (1) The age reference date is age at the time of the survey. Data on training courses and on-the-job training cover the twelve months prior to the survey period (March to May 1997). Data on TAFE, other institutions or organisations, and higher education cover the 1996 calendar year. Secondary school data refer only to the survey reference date. Excludes persons who were not in the labour force at the time of the survey. *and* also not in full or part-time education in 1997. Includes persons aged 15-64 years who had a wage or salary job in the last twelve months, and persons aged 15-64 years who, at the time of the survey (March to May 1997), were employed, unemployed, marginally attached to the labour force, or in full- or part-time education. Thus the rates may overestimate participation in the total population 15-64 years old.
- (2) Includes participants in other educational qualifications (certificates of less than one semester, and secondary school certificates); and those who enrolled in an educational qualification in 1997, but did no other education or training.

Source: Australian Bureau of Statistics. (1999). *Survey of Education and Training, 1997*. unpublished data.

## EDUCATIONAL ATTAINMENT

**Table 35. Educational attainment of persons aged 15-64 years - May 1997 ('000)**

<i>Educational attainment</i>	<i>Males</i>	<i>Females</i>	<i>Proportion female (%)</i>	<i>15-19 year olds</i>	<i>20-24 year olds</i>	<i>25-64 year olds</i>	<i>Persons (total)</i>	<i>Proportion (%)</i>
With post-school qualifications (1)	2725.1	2195.9	44.6	52.0	521.3	4347.7	4921.0	40.4
Higher degree	128.9	73.3	36.3	*0.0	*2.9	199.2	202.2	1.7
Postgraduate diploma	98.2	132.3	57.4	*0.9	9.3	220.4	230.5	1.9
Bachelor degree	605.2	615.0	50.4	*0.0	151.2	1069.0	1220.2	10.0
Undergraduate diploma	207.1	354.4	63.1	*4.0	37.2	520.2	561.5	4.6
Associate diploma	203.2	174.2	46.1	*3.2	62.8	311.5	377.5	3.1
Skilled vocational	1098.4	156.9	12.5	11.2	115.0	1129.1	1255.3	10.3
Basic vocational	384.1	689.8	64.2	32.8	142.9	898.2	1073.9	8.8
Without post-school qualifications (2)	3052.0	3553.0	53.8	570.3	837.4	5197.4	6605.0	54.2
Completed highest level of school	1031.9	1144.7	52.6	335.2	516.4	1325.1	2176.7	17.9
Did not complete highest level of school	2018.6	2401.2	54.3	234.9	320.3	3864.7	4419.9	36.3
Still at school	330.0	331.0	50.1	655.8	*2.1	*3.2	661.0	5.4
<b>Persons (total)</b>	<b>6107.1</b>	<b>6079.9</b>	<b>49.9</b>	<b>1278.0</b>	<b>1360.8</b>	<b>9548.0</b>	<b>12187.0</b>	<b>100.0</b>
Persons (%)	50.1	49.9	..	10.5	11.2	78.3	100.0	..

Note: Persons aged 0-14 years and 65 years and over were out of the scope of the survey, but are much less likely to hold qualifications than persons aged 15-64 years.

(1) As defined under the Australian Bureau of Statistics Classification of Qualifications (ABSCQ).

(2) Includes persons who never attended school.

Source: Tables 9-10, p.11, ABS. (1997). *Transition From Education to Work, Australia, May 1997* (Cat. No. 6227.0).  
Belconnen, ACT: ABS.

**Table 36. Highest level of educational attainment of the population (survey data) (%)**

	1983	1984	1985	1986	1987	1988	1989	1990	1991	1992	1993	1994	1995	1996	1997	1998
<i>Bachelor degree or higher</i>																
February survey	6.2	6.6	7.3	7.6	7.4	7.6	8.0	8.4	8.7	9.4	9.8	(1)	..	..	..	..
May survey: old class'n	..	..	..	..	..	..	7.9	8.4	9.0	9.6	..	..	..	..	..	..
May survey: ABSCQ	..	..	..	..	..	..	..	..	..	..	10.1	11.5	r11.9	12.8	13.6	14.3
<i>Post-school - below bachelor degree</i>																
February survey	26.7	27.6	28.1	28.9	30.8	30.9	31.7	31.5	32.1	32.4	33.4	(1)	..	..	..	..
May survey: old class'n	..	..	..	..	..	..	31.4	31.3	31.8	32.1	..	..	..	..	..	..
May survey: ABSCQ	..	..	..	..	..	..	..	..	..	..	28.9	r27.5	r29.1	29.4	26.8	27.6
<i>Completed or attended highest level of high school and does not have post-school qualifications</i>																
February survey	11.3	11.1	11.8	11.7	11.8	12.0	12.1	13.0	13.4	14.1	14.7	(1)	..	..	..	..
May survey: old class'n	..	..	..	..	..	..	15.1	16.9	17.1	18.0	..	..	..	..	..	..
May survey: ABSCQ	..	..	..	..	..	..	..	..	..	..	18.2	r17.7	r17.7	17.6	17.9	18.4
<i>Did not complete high school and does not have post-school qualifications (2)</i>																
February survey	52.2	50.6	48.5	47.1	45.3	44.3	43.3	42.4	40.8	39.3	37.2	(1)	..	..	..	..
May survey: old class'n	..	..	..	..	..	..	40.0	37.9	36.3	34.7	..	..	..	..	..	..
May survey: ABSCQ	..	..	..	..	..	..	..	..	..	..	37.3	r37.7	r36.1	34.8	36.3	34.2
<i>Still at school</i>																
February survey	3.7	4.1	4.4	4.6	4.7	5.2	4.9	4.8	5.0	4.9	4.8	(1)	..	..	..	..
May survey: old class'n	..	..	..	..	..	..	5.7	5.5	5.8	5.7	..	..	..	..	..	..
May survey: ABSCQ	..	..	..	..	..	..	..	..	..	..	5.4	5.6	5.3	5.3	5.4	5.4
<i>Total</i>																
February survey	100.0	100.0	100.0	100.0	100.0	100.0	100.0	100.0	100.0	100.0	100.0	(1)	..	..	..	..
May survey: old class'n	..	..	..	..	..	..	100.0	100.0	100.0	100.0	..	..	..	..	..	..
May survey: ABSCQ	..	..	..	..	..	..	..	..	..	..	100.0	100.0	100.0	100.0	100.0	100.0

Note: 1982 data are respectively 5.8; 26.2; 10.9; 53.4; 3.7; and 100.0. Reference dates are as at the time of the survey. Between 1982 and 1984, the February survey population is 15+ years old. From 1985, the February survey population is 15-69 years. The May survey population is 15-64 years old.

(1) Data for 1994 have not been included for the February survey, because the ABSCQ was introduced into that survey in that year, causing a break in the series.

(2) Includes persons who never attended school and those for whom attendance at a secondary school could not be determined.

Source: Table 1. p.7. ABS. (1982, 1983). *Labour Force Status and Educational Attainment. Australia. Februarv 1982. 1983* (Cat. No. 6235.0). Canberra: AGPS: Table 3. p.9. ABS. (1984). *Labour Force Status and Educational Attainment. Australia. Februarv 1984* (Cat. No. 6235.0). Canberra: AGPS: Table 2. p.7. ABS. (1990). *Labour Force Status and Educational Attainment. Australia, February 1990* (Cat. No. 6235.0). Canberra: AGPS: Table 2, p.4. ABS. (1991). *Labour Force Status and Educational Attainment, Australia, February 1991* (Cat. No. 6235.0). Canberra: AGPS: Table 4, p.6. ABS. (1992, 1993). *Labour Force Status and Educational Attainment. Australia. Februarv 1992. 1993* (Cat. No. 6235.0). Canberra: AGPS: Table 6. p.9. ABS (1991, 1992, 1993). *Transition From Education to Work. Australia. Mav 1991. 1992. 1993* (Cat. No. 6227.0). Canberra: AGPS: Table 9. p.12. ABS (1996). *Transition From Education to Work. Australia. Mav 1996* (Cat. No. 6227.0). Belconnen. ACT: ABS: Table 9. p.11. ABS (1997, 1998). *Transition From Education to Work. Australia. Mav 1997. 1998* (Cat. No. 6227.0). Belconnen: ABS.

---

**DATA SOURCES AND METHODS**

---

**ADMINISTRATIVE COLLECTIONS AND CENSUSES**

<b>Agency responsible</b>	<b>Collection</b>	<b>Institutional sector</b>	<b>Methodology</b>	<b>Age reference date</b>
ABS	National Schools Statistics Collection (Cat. No. 4221.0)	Schools	Annual census; the census collection date is the first Friday in August	The age reference date of students is 1 July.
NCVER	Australian Vocational Education and Training Statistics	TAFE (to 1993) and also other publicly funded VET (from 1994)	Annual administrative collection; collects all enrolments throughout the year regardless of date of enrolment, and presents estimates of net student numbers; courses may be of any duration	Age reference date is at 30 June.
DETYA	Higher Education Student Statistics collection	Higher education (publicly funded universities)	Annual census (administrative) collection; excludes students who commenced after collection reference date; excludes private higher education institutions; the collection reference date was 31 March from 1989, and 30 April between 1985 and 1988	The age reference date of 30 June is used in this publication in general, but most published numbers have an age reference date of 31 December of the year preceding collection.

**ABS SURVEYS**

<b>Agency responsible</b>	<b>Collection</b>	<b>Institutional sector</b>	<b>Methodology</b>	<b>Age reference date</b>
ABS	Estimated Resident Population (Cat. No. 3201.0)	All sectors	Estimates based on adjustments (generated from administrative and survey data) to data from the five yearly Census of Population and Housing	Estimates are as at 30 June.
ABS	Participation in Education (Cat. No. 6272.0)	All (but only used for non-TAFE VET sector in the participation rates in this publication)	Survey; collected in September each year	As at the time of collection.
ABS	Transition from Education to Work (Cat. No. 6227.0)	All (but only used for non-TAFE VET sector in the participation rates in this publication)	Survey; collected in May each year; only courses meeting certain criteria (eg. one semester's FTE duration) are recognised in post-1992 surveys; the classification of qualifications has changed over time	As at the time of collection.
ABS	Labour Force Status and Educational Attainment (Cat. No. 6235.0)	All sectors; only used for attainment data, not participation rates, in this publication	Survey; collected in February, but it has been discontinued; the Transition from Education to Work survey provides similar information	As at the time of the collection.
ABS	Survey of Education and Training (Cat. No. 6278.0)	All sectors	Survey; collected between March and May 1997; see footnotes to Table 34 for more information	Age reference dates are as at the time of the survey.

---

## CAVEATS

---

### PARTICIPATION

In the case of vocational education and training, especially other than TAFE vocational courses, time series are problematic.

The **VET** collection, *sourced from the National Centre for Vocational Education Research*, has always excluded on-the-job training and school education programmes. Administrative VET data covered TAFE courses (publicly funded) from 1985 to 1994. In 1992, netting students from total enrolments became more difficult, and in 1994 the Australian Vocational Education and Training Management Information Statistical Standard (AVETMISS) collection system was introduced, though it did not affect the scope of the collection in its year of introduction. In 1995, Adult and Community Education (ACE) providers were brought into the scope of the collection, and publicly funded courses run by private providers were included in 1996. Since 1995, TAFE students can only be isolated (from students doing other publicly funded VET courses) using unpublished data.

Data on **other** educational (non-TAFE VET) institutions are *sourced from ABS surveys*, but are subject to sampling variability problems.

Population estimates (used to calculate the participation rates) were derived from Australian Bureau of Statistics PC AUSSTATS tables, which reflected the published figures on estimated resident population in Cat. No. 3201.0. These figures represent preliminary estimates for 1997. It should be noted that the final 1997 estimates of population will vary slightly from those used in the calculations towards this publication. The effects on education participation rates are likely to be insignificant. Rates will be revised in future editions of this publication.

### EDUCATIONAL ATTAINMENT

In 1993, the ABS introduced the Australian Bureau of Statistics Classification of Qualifications (ABSCQ) into the Transition From Education to Work survey to classify post-school qualifications. The ABSCQ includes the following classifications, and can be directly compared with its predecessor at the trade and bachelor degree levels and above:

1986 CENSUS CLASSIFICATION	ABSCQ
Higher Degree Level	Higher Degree
Graduate Diploma Level	Postgraduate Diploma
Bachelor Level	Bachelor Degree
Diploma Level	Undergraduate Diploma; or Associate Diploma
Certificate – Trade Level	Skilled Vocational Qualification
Certificate – Other Level	Associate Diploma; or Basic Vocational Qualification

Note: Courses less than one FTE semester in duration, which can be coded to one of the 1986 Census Classification levels, are excluded from the ABSCQ.

Source: p.227, ABS. (1993). *ABSCQ: ABS Classification of Qualifications* (Cat. No. 1262.0). Canberra: AGPS; p.21, ABS. (1993). *Transition From Education to Work, Australia, May 1993* (Cat. No. 6227.0). Canberra: AGPS.

### **CATEGORIES USED IN TIME SERIES**

The pre-ABSCQ and ABSCQ classifications are not compatible, as can be seen from the charts below. To make useful time series it has been necessary to collapse the classifications into the following categories:

- Bachelor Degree (or higher) level: this classification is straight forward and includes the “Degree” classification in the earlier series and the “Higher Degree”, “Post-Graduate Diploma” and “Bachelor Degree” levels from ABSCQ;
- Post-School below Bachelor Degree: this category is made up from those who have post-school qualifications, less those in the Bachelor Degree or higher category above. As mentioned above, this category will not be strictly comparable over time as the ABSCQ excludes qualifications that took less than a semester to complete. This classification includes a wide range of levels of education, from postgraduate diplomas to apprenticeship qualifications to basic vocational qualifications.

### **ADJUSTMENTS DUE TO THE INTRODUCTION OF ABSCQ**

The major difference in these series relates to the introduction of ABSCQ to the Transition series in 1993.

As well as changing the classifications, ABSCQ post-school classifications are more stringent than the earlier series, so that qualifications from courses of less than one semester’s duration are excluded. This means that the number of people with non-degree post-school qualifications in the ABSCQ series is less than is the case for the earlier series.

### **IMPACT OF CHANGING FROM FEBRUARY TO MAY SURVEYS**

The most obvious difference between these surveys is the difference in the scope. The February based surveys, conducted until 1994, included 65 to 69 year olds, with lower average educational attainment levels.

The timing of the surveys affects estimates of numbers of students still at school. The May survey always shows significantly more students still at school than the February surveys. This is because about one quarter of the 14 year olds for any one year turn 15 years old between these surveys, and are mostly included in the “still at school” category.

---

## GLOSSARY

---

### **Adult and Community Education (ACE)**

Organisations involved in ACE provide informal, locally accessible, and community-based educational opportunities for adults. ACE programs are provided by TAFE and higher education institutions, schools, neighbourhood centres, community education centres, adult education providers and Skillshare centres.<sup>9</sup>

### **Age**

Ages are reported, wherever possible, as the difference in years between 30 June of the year referred to in the table, and the student's date of birth. When data with this age reference date (30 June) could not be obtained, this is indicated in the table's footnotes.

### **Apparent retention rate**

This is the percentage of students of a given cohort group who continued to a particular level or year of education. Care should be exercised in the interpretation of apparent retention rates since a range of factors affecting calculation has not been taken into account. At the Australia level these include students repeating a year of education, migration and other net changes to the school population. At lower levels of disaggregation, additional factors affecting the data, such as enrolment policies, inter-sector transfer and interstate movements of students have not been taken into account.<sup>10</sup>

### **Australian Vocational Education and Training Management Information and Statistical Standard (AVETMISS)**

Data collections under AVETMISS encompass all delivery funded wholly or in part from public funds, as follows:

- All VET delivered by TAFE and other government providers;
- All VET delivered by higher education providers and multi-sector institutions;
- All VET delivered by registered community providers;
- Publicly funded VET delivered by registered private providers; and
- VET delivered in schools, where the activity has been funded by State training authorities from recurrent VET allocations or ANTA growth funds.<sup>11</sup>

However, in 1997, only two States (Qld and SA) were reporting VET in schools.<sup>12</sup>

---

<sup>9</sup> p.142, ABS. (1999). *Education and training in Australia, 1998*. (Cat. No. 4224.0). Belconnen, ACT: ABS.

<sup>10</sup> p.92, ABS. (1998). *Schools Australia, 1997*. (Cat. No. 4221.0). Belconnen, ACT: ABS.

<sup>11</sup> p.139, National Centre for Vocational Education Research. (1998). *Australian vocational education and training statistics, 1997: In detail*. Leabrook, SA: Australian National Training Authority.

<sup>12</sup> National Centre for Vocational Education Research, personal communication, February 26, 1999.

### **Award course (higher education)**

A programme of study formally approved/accredited by an institution or any other relevant accreditation authority and which leads to an academic award granted by the institution, or which qualifies a student to enter a course at a level higher than a bachelor degree.<sup>13</sup>

### **Business colleges**

Includes private business colleges or establishments that offer training or educational courses such as secretarial studies, business management, marketing, etc.<sup>14</sup>

### **Educational institution**

Any institution whose primary role is education. Included are schools, higher education establishments, colleges of TAFE, public and private colleges. Excluded are institutions whose primary role is not education, for example, hospitals.<sup>15</sup>

### **Enabling course**

A programme of study which:

- Provides bridging or supplementary education for the purpose of enabling a person to undertake an award course at the institution or at another institution; and
- Meets Commonwealth guidelines concerning the inclusion in the annual statistical collection of student load for bridging and supplementary programs.<sup>16</sup>

### **Estimated resident population (ERP)**

The estimated resident population is an estimate of the Australian population obtained by adding to the estimated population at the beginning of each reference period the components of natural increase (on a usual residence basis) and net overseas migration. Account is also taken of estimated interstate movements involving a change of usual residence for data by States and Territories. After each population census, estimates for the preceding intercensal period are revised to ensure that the total intercensal increase agrees with the difference between the estimated resident populations at the two respective census dates.<sup>17</sup>

It should be noted that the resident population is those who are either permanent residents or long term residents (who stay or intend to stay in Australia for more than 12 months) of

---

13 p.142, ABS. (1999). *Education and training in Australia, 1998*. (Cat. No. 4224.0). Belconnen, ACT: ABS.

14 p.31, ABS. (1997). *Participation in education, Australia, September 1996*. (Cat. No. 6272.0). Canberra, ACT: AGPS; p.29, ABS. (1998). *Transition from education to work, Australia, May 1998*. (Cat. No. 6227.0). Belconnen, ACT: ABS.

15 p.31, ABS. (1997). *Participation in education, Australia, September 1996*. (Cat. No. 6272.0). Canberra, ACT: AGPS; p.30, ABS. (1998). *Transition from education to work, Australia, May 1998*. (Cat. No. 6227.0). Belconnen, ACT: ABS.

16 p.144, ABS. (1999). *Education and training in Australia, 1998*. (Cat. No. 4224.0). Belconnen, ACT: ABS.

17 p.48, ABS. (1999). *Australian demographic statistics, September quarter 1998*. (Cat. No. 3101.0). Belconnen, ACT: ABS.

Australia. Most overseas students are likely to stay in Australia for more than 12 months, and are therefore included in the ABS resident population estimates.<sup>18</sup>

### **Full- and part-time school students**

A full-time school student is one who undertakes a workload specified as full-time in the government or non-government school sector.

A part-time school student is one who undertakes a workload less than that specified as full-time in either sector. The method used to determine school student workload varies between States and Territories.<sup>19</sup>

### **Full-, part-time and external higher education students**

A full-time higher education student has an aggregated (ie. across all units of study) student load of 0.75 or more (as a proportion of the workload for a standard annual programme) in the reference year, and undertakes all units of study through attendance at the institution on a regular basis, or on an agreed schedule (in the case of a higher degree course).

A part-time higher education student has an aggregated (ie. across all units of study) student load of less than 0.75 (as a proportion of the workload for a standard annual programme) in the reference year, and undertakes all units of study through attendance at the institution on a regular basis, or on an agreed schedule (in the case of a higher degree course).

An external higher education student's course materials, etc. are delivered to the student, and they only attend the institution under incidental, irregular, voluntary or special circumstances. An external higher education student's aggregated course load may be either full- or part-time in the reference year.<sup>20</sup>

### **Industry association**

An association of people representing organisations within an industry, that exists with a formal structure and with some purpose relating specifically to that industry, eg. Retail Trades Association.<sup>21</sup>

### **Industry skills centre**

Consists of vocation-oriented training centres for specific industries that provide accredited courses, eg. automotive skills centres and retail skills centres.<sup>22</sup>

---

18 p.5, DEETYA. (1997). *Higher education participation rates, Australia: 1975-1995 (final) and 1996 (preliminary)*. Canberra, ACT: AGPS.

19 p.95, ABS. (1998). *Schools, Australia, 1997* (Cat. No. 4221.0). Belconnen, ACT: ABS.

20 pp.161, 163, 165, DEETYA. (1997). *Selected higher education student statistics, 1997*. Canberra, ACT: AGPS.

21 p.32, ABS. (1996). *Commercial training providers, Australia, 1994* (Cat. No. 6352.0). Canberra, ACT: AGPS.

22 p.32, ABS. (1997). *Participation in education, Australia, September 1996*. (Cat. No. 6272.0). Canberra, ACT: AGPS; p.30, ABS. (1998). *Transition from education to work, Australia, May 1998*. (Cat. No. 6227.0). Belconnen, ACT: ABS.

### **In-house training**

Structured training organised by employers primarily for their own employees, using the employer's own staff, or consultants, eg. where a consultant designs or conducts a programme specifically for the employer. In-house training can be conducted at an off-site location.<sup>23</sup>

### **Non-award course**

A programme of study which does not lead to an award and which comprises a unit or units of study which:

- Is a unit or units of study from an award course or courses at the institution; and
- Can be counted as a credit towards some award course at the institution by all students who complete the unit or units of study.<sup>24</sup>

### **On-the-job training**

Collected in the ABS Survey of Education and Training. Respondents who were employed at the time of the survey, or who had worked for wages or salary in the last 12 months, were asked to indicate whether at least one of the following activities were undertaken to improve their job skills, while working in any job, in the last 12 months:

- Asking questions of co-workers or colleagues;
- Teaching yourself;
- Being shown how to do your job;
- Watching others work; and
- Other activities.

On-the-job training excludes any training that occurred as part of an in-house or external training course, or study for an educational qualification.<sup>25</sup>

### **Other educational institutions (other VET)**

Includes institutions or establishments that offer educational courses that lead to qualifications such as hairdressing, etc., and instances in Australian Bureau of Statistics surveys where insufficient information was available to determine the type of educational institution.<sup>26</sup> Excludes TAFE institutions and courses.

---

23 p.146, ABS. (1999). *Education and training in Australia, 1998*. (Cat. No. 4224.0). Belconnen, ACT: ABS.

24 p.147, ABS. (1999). *Education and training in Australia, 1998*. (Cat. No. 4224.0). Belconnen, ACT: ABS.

25 p.125, ABS. (1998). *Education and Training Experience, Australia, 1997*. (Cat. No. 6278.0). Canberra: AusInfo.

26 p.33, ABS. (1997). *Participation in education, Australia, September 1996*. (Cat. No. 6272.0). Canberra, ACT: AGPS; p.31, ABS. (1998). *Transition from education to work, Australia, May 1998*. (Cat. No. 6227.0). Belconnen, ACT: ABS.

## **Overseas student**

A student who is not one of the following – an Australian citizen; or a person entitled to stay in Australia, without any limitation as to time and resides in Australia during the semester.<sup>27</sup> Overseas students are foreign students who enter Australia on a student visa and attend courses on either a full-fee or subsidised basis. From 1996, higher education students with New Zealand citizenship were counted as non-overseas students.<sup>28</sup>

## **Participation rate**

A participation rate in any group for a given activity is the number of people taking part in the activity expressed as a percentage of the population of the group.<sup>29</sup>

## **Private (VET) providers**

Commercial organisations that provide training to individuals and industry (in NCVER's collection).<sup>30</sup>

## **Public and private sectors**

The public sector includes TAFE and higher education institutions. The private sector includes private VET providers. Schools may be run by either the public or private sectors. Other (non-TAFE) VET may be either public, publicly funded, or private sector. Public sector organisations are created by, or report to, local, State and Territory or Commonwealth governments. Educational participation by students at private higher education institutions is not quantifiable. Educational participation by non-publicly funded VET students (and, historically, for non-TAFE students) is only available from ABS surveys. However, survey estimates are subject to both sampling and non-sampling errors, and such students constitute only a minor proportion of total educational participation.<sup>31</sup>

## **School**

A school must satisfy the following criteria (with the exception of special schools):

- Its major activity is the provision of full-time day primary or secondary education or the provision of primary or secondary distance education; and
- It is headed by a principal (or equivalent) responsible for its internal operation; and

---

27 p.148, ABS. (1999). *Education and training in Australia, 1998*. (Cat. No. 4224.0). Belconnen, ACT: ABS.

28 p.5, DEETYA. (1997). *Higher education participation rates, Australia: 1975-1995 (final) and 1996 (preliminary)*. Canberra, ACT: AGPS.

29 p.148, ABS. (1999). *Education and training in Australia, 1998*. (Cat. No. 4224.0). Belconnen, ACT: ABS.

30 p.144, National Centre for Vocational Education Research. (1998). *Australian vocational education and training statistics, 1997: In detail*. Leabrook, SA: Australian National Training Authority.

31 See ABS. (1998). *Education and Training Experience, Australia, 1997*. Cat. No. 6278.0. Canberra: AusInfo; ABS. (1998). *Participation in Education, Australia, September 1997*. Belconnen: ABS; and ABS. (1997). *Transition From Education to Work, Australia, May 1997*. Belconnen: ABS.

- It is possible for students to enrol for a minimum of four continuous weeks, excluding breaks for school vacations.

The term 'school' includes schools in institutions and hospitals, mission schools and similar establishments. The term excludes preschools, kindergarten centres, pre-primary schools or pre-primary classes in or attached to non-special schools, senior technical and agricultural colleges, evening schools, continuation classes and institutions such as business or coaching colleges.<sup>32</sup>

### **State of origin (State of permanent home residence)**

State or Territory of the student's permanent home address, regardless of the location of the institution at which they are studying. In theory, State of origin participation rates should exclude inter-State and overseas students. State of origin rates are not calculated for TAFE and VET students because the number of such students with interstate home addresses is very small.<sup>33</sup>

### **TAFE**

Technical and Further Education.<sup>34</sup>

### **Tertiary institutions**

Any educational institution offering post-school courses.<sup>35</sup> Thus tertiary education refers to students in both higher education and VET.<sup>36</sup>

### **Training courses**

Training courses are defined in the ABS' Survey of Education and Training as activities undertaken in Australia primarily to obtain, maintain, or improve employment-related skills or competencies. Training courses have a structured format, and are undertaken at a time specifically designated for that training course. They consist of periods of instruction or a combination of instruction and monitored practical work.<sup>37</sup>

### **Training Provider Location**

A location administered by a training organisation for the purpose of providing clients with programs of training.<sup>38</sup>

---

32 pp.94-95, ABS. (1998). *Schools Australia, 1997* (Cat. No. 4221.0). Belconnen, ACT: ABS.

33 p.5, DEETYA. (1997). *Higher education participation rates, Australia: 1975-1995 (final) and 1996 (preliminary)*. Canberra, ACT: AGPS; p.63-64, DEET. (1994). *Education participation rates, Australia, 1993*. Canberra, ACT: AGPS.

34 p.145, National Centre for Vocational Education Research. (1998). *Australian vocational education and training statistics, 1997: In detail*. Leabrook, SA: Australian National Training Authority.

35 p.33, ABS. (1997). *Participation in education, Australia, September 1996*. (Cat. No. 6272.0). Canberra, ACT: AGPS.

36 p.66, DEET. (1994). *Education participation rates, Australia, 1993*. Canberra, ACT: AGPS.

37 p.v, ABS. (1998). *Education and Training Experience, Australia, 1997*. Cat. No. 6278.0. Canberra: AusInfo.

38 p.145, National Centre for Vocational Education Research. (1998). *Australian vocational education and training statistics, 1997: In detail*. Leabrook, SA: Australian National Training Authority.

## VET

Vocational Education and Training.<sup>39</sup> VET comprises educational programmes, generally offered at the secondary and non-university tertiary level of education, that prepare participants for a specific trade or occupation or a range of trades and occupations within an industry or group of industries. Completion of a VET programme may lead to direct entry into the labour force, or prepare students for further educational programmes at the same or a higher level.<sup>40</sup>

### VET course

A structured sequence of vocational education and training that leads to the acquisition of identified competencies and if submitted for accreditation, leads to a qualification.<sup>41</sup>

### VET courses of 200+ hours

This is a measure of VET course duration designed to approximate the duration of courses recognised by the ABSCQ (Australian Bureau of Statistics Classification of Qualifications) as leading to a qualification. The ABSCQ only recognises course outcomes which are at least equivalent to one full-time semester. Such study leads to the awarding of a post-school qualification that falls within the scope of the ABSCQ. A VET course duration of 200+ hours is an approximate measure of courses of study in which the entire duration of the course is equal to, or more than, the equivalent of one full-time semester. The tables on VET courses of 200+ hours can consequently be more easily compared to ABS educational participation data which are based on the ABSCQ.<sup>42</sup> Furthermore, because VET students are mostly part-time, those in courses of 200+ hours are likely to be attending a VET institution for most of the year. Students attending VET courses of less than 200 hours, especially those in very short courses, appear in administrative collections but are less likely to be attending when a survey is conducted.

Choosing 200+ hours as the cut-off (for course outcomes recognised by the ABSCQ) is also the most convenient category for comparison with tables published by NCVER on client load.<sup>43</sup> It should be noted, however, that the author of this publication is not aware of any studies done on this matter. NCVER actually collects exact client load, rather than collecting load in ranges.<sup>44</sup> The ABS, informally, tends to use 200 hours as a cut-off approximating its “equivalent to one full-time semester” ABSCQ definition.<sup>45</sup> To some extent, selection of VET courses of 200+ hours to facilitate comparison with ABS data is arbitrary.

While a distinction between full- and part-time courses in VET is not realistic, when necessary, NCVER identifies a client load of greater than 540 hours as “full-time”.<sup>46</sup>

---

39 p.145, National Centre for Vocational Education Research. (1998). *Australian vocational education and training statistics, 1997: In detail*. Leabrook, SA: Australian National Training Authority.

40 pp.427-428, OECD. (1998). *Education at a Glance: OECD Indicators, 1998*. Paris: OECD.

41 p.143, National Centre for Vocational Education Research. (1998). *Australian vocational education and training statistics, 1997: In detail*. Leabrook, SA: Australian National Training Authority.

42 See also p.236, ABS. (1996). *Education and training in Australia, 1996*. (Cat. No. 4224.0). Canberra, ACT: AGPS; p.33, ABS. (1997). *Participation in education, Australia, September 1996*. (Cat. No. 6272.0). Canberra, ACT: AGPS; p.21, ABS. (1998). *Transition from education to work, Australia, May 1998*. (Cat. No. 6227.0). Belconnen, ACT: ABS.

43 Table 13, p.26, National Centre for Vocational Education Research. (1998). *Australian vocational education and training statistics, 1997: In detail*. Leabrook, SA: Australian National Training Authority.

44 National Centre for Vocational Education Research, personal communication, June 17, 1999.

45 Australian Bureau of Statistics, personal communication, June 16, 1999.

46 National Centre for Vocational Education Research, personal communication, June 17, 1999.

